



EVIDENZ

Earth Observation based information products for drought risk reduction on the national level

ZFL, UNU-EHS, United Nations Platform for Space-based Information for Disaster Management and Emergency Response (UN-SPIDER), Space Research Institute of Ukraine & University of the Free State, South Africa



The Framework

Drought

- Impact on Economy, Environment and Livelihoods – direct / indirect
- Most severe hazard with regard to intensity, severity, frequency, spatial extension and impact on livelihoods compared to other events
- Drought events are increasing

Limitation for Analysis

- Definition
- High number of indicators
- Validation data
- National data accessibility

EvIDENZ

- Measuring drought risk and hazard as well as vulnerability
- Combining national research and disaster risk management
- No reinvention – development of a processing chain to integrate different disciplines to provide successful monitoring



Source: Huffington Post

14-18 March 2015

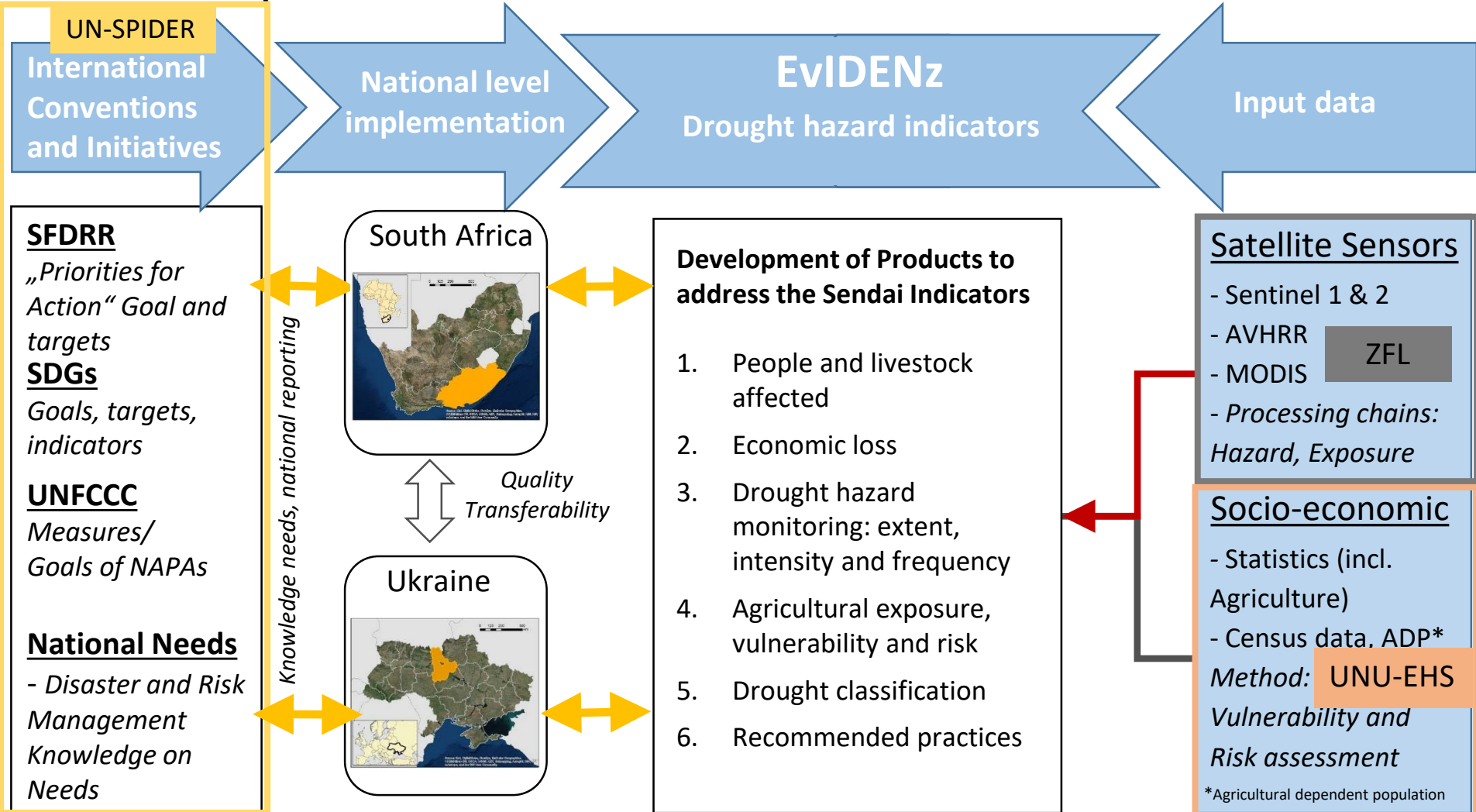
Third UN World Conference on Disaster Risk Reduction

187 Member States met in Sendai, Japan, to agree on a new global framework for disaster risk reduction for the period 2015-2030 – SFDRR



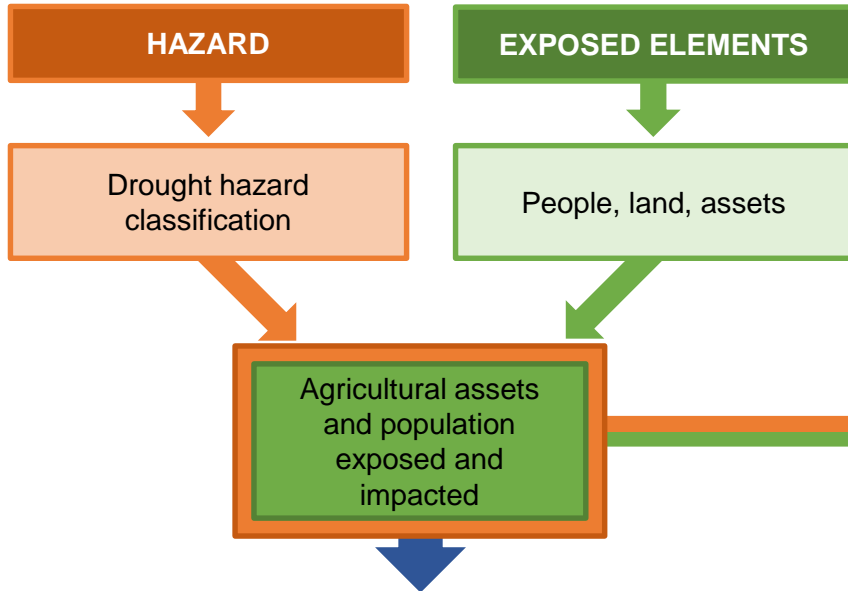
The EVIDENZ-Framework

A: Schematic representation of EVIDENZ elements

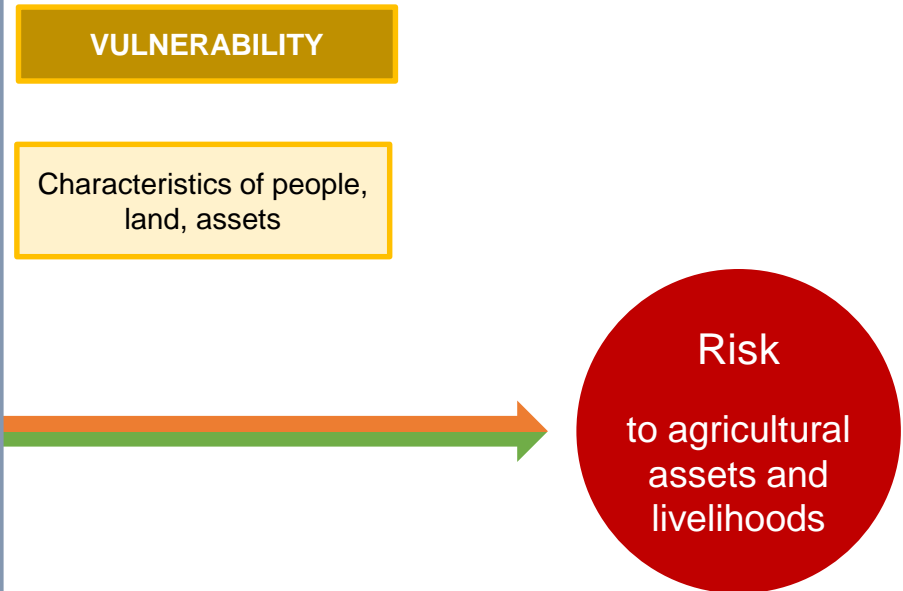


EVIDENZ approach

Objective II: Assessment of Sendai targets



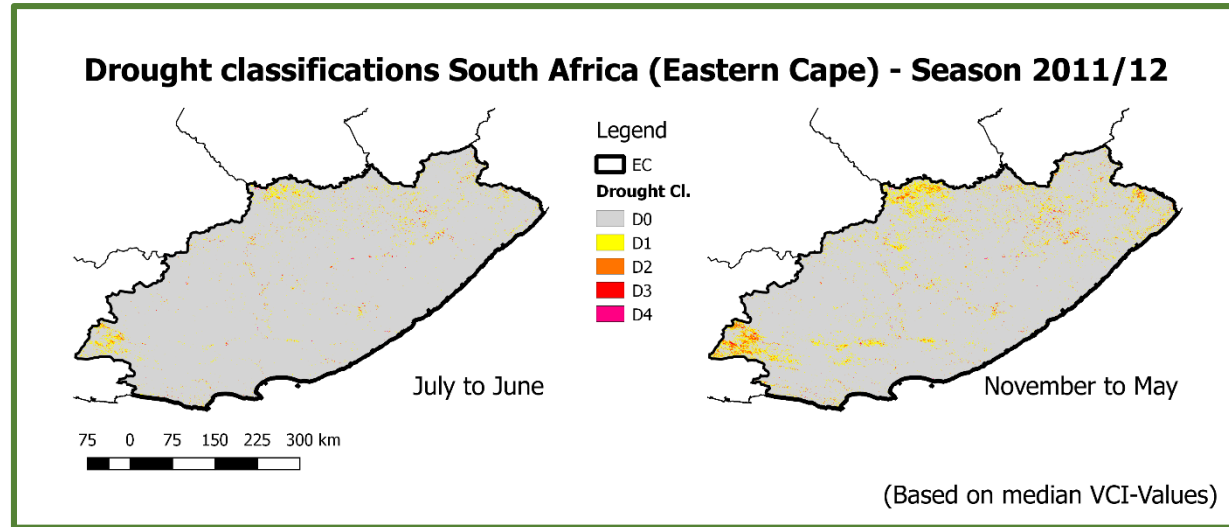
Objective I: Understanding risk



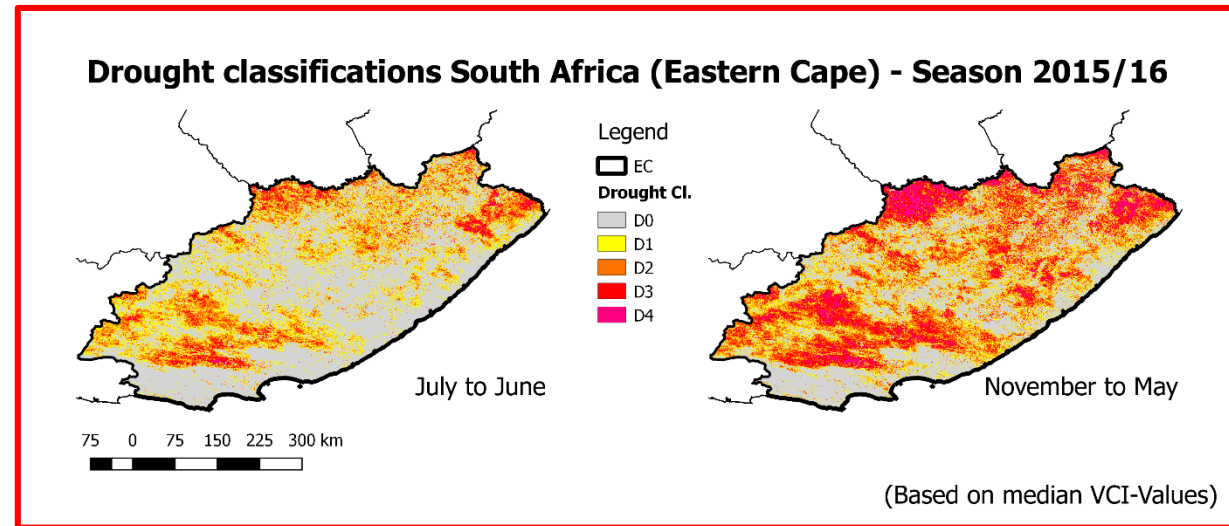
! Rely on open, accessible data sets that are representative for the national level !

Preliminary Output – Conditions for a full year and for a season

Normal/Non-Drought Year

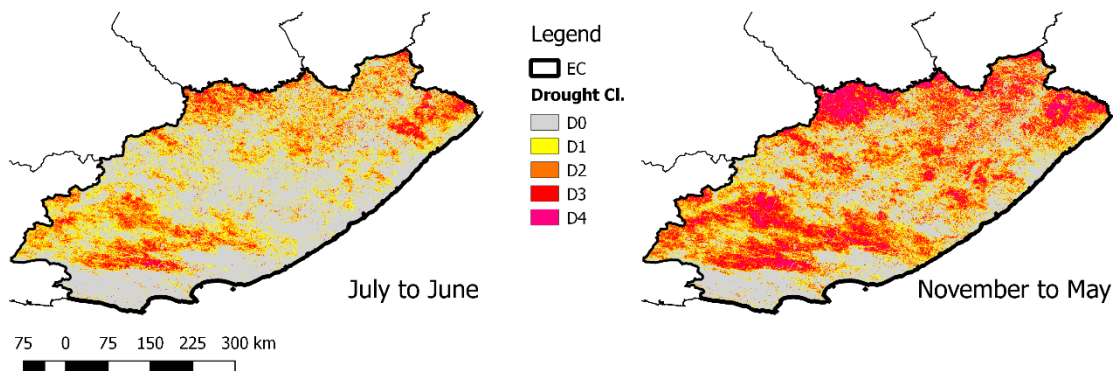


Drought Year



Drought Classification – Hazard Classification

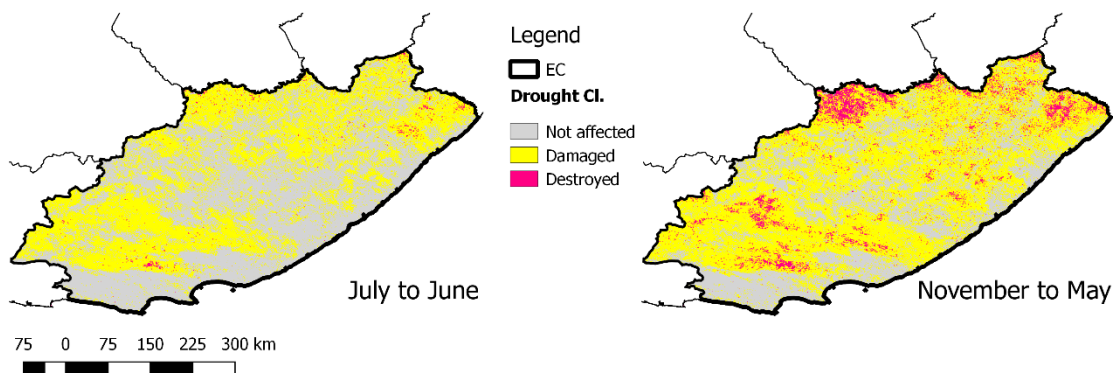
Drought classifications South Africa (Eastern Cape) - Season 2015/16



(Based on median VCI-Values)

Drought Hazard Severity Classes	Value in final output	VCI Values (weighted over season)
No Drought (D0)	0	>40
Mild Drought (D1)	1	30–40
Moderate Drought (D2)	2	20–30
Severe Drought (D3)	3	10–20
Extreme Drought (D4)	4	<10

Drought classifications South Africa (Eastern Cape) - Season 2015/16



(Based on median VCI-values)

Vegetation condition	Value in final output	VCI Values (weighted over season)
Not affected (H0)	0	>40
Damaged (H1)	1	10–40
Destroyed (H2)	2	<10

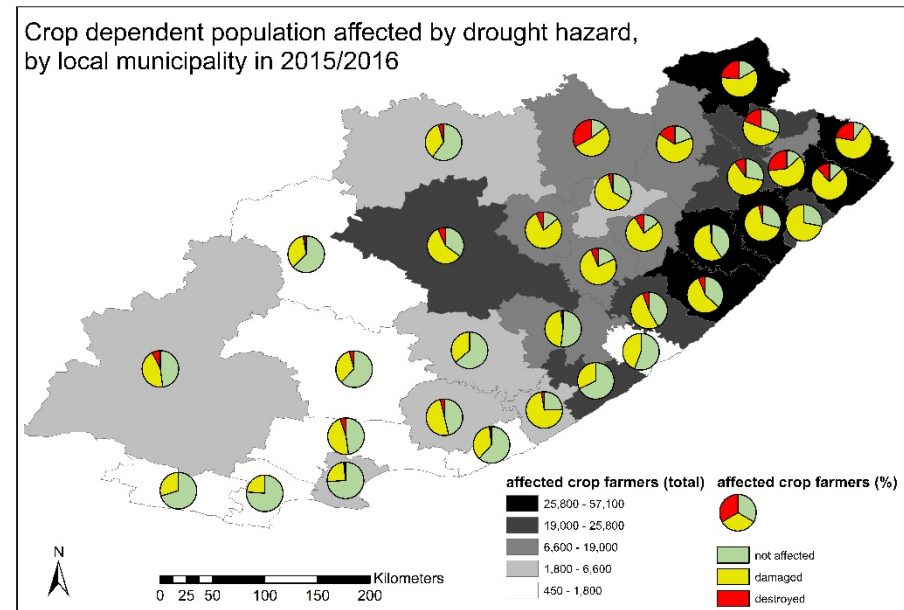
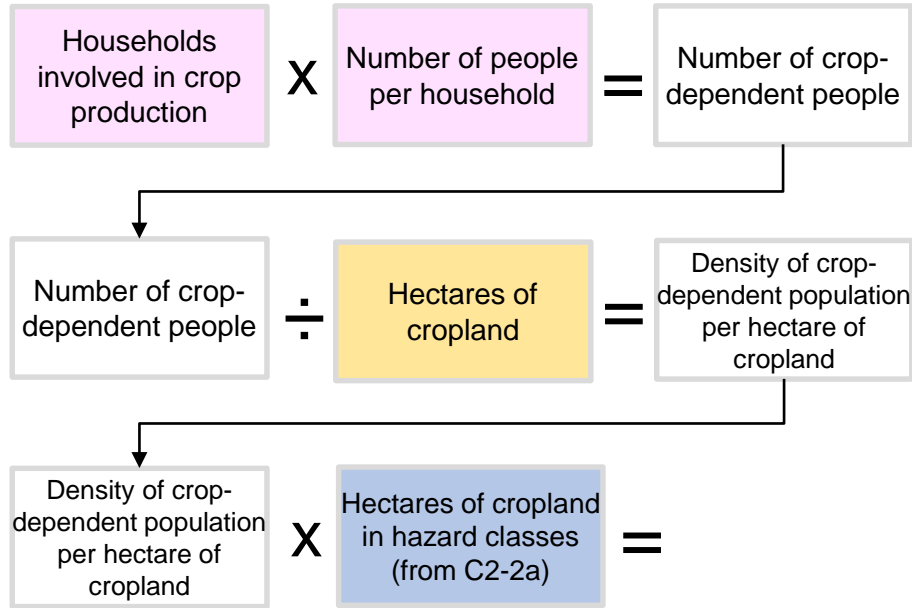
Vulnerability indicators measured at local municipality level

Susceptibility indicator	Measure	Data source
Education	% of HH without formal education (+)	StatSA 2011a
Social dependency	Rate of population at the age of 0-14 and >65 in % (+)	StatSA 2011b
Stock theft	Number of stock thefts per 1000 HH (+)	ECSECC Database 2016
Age	% of HH between the age of 15 and 55 (-)	StatSA 2011a
Income	Share of HH living from less than R9600/year (+)	StatSA 2011b
Gender	gender parity (% unempl female/% unempl male) (+)	StatSA 2014
Unemployment	Unemployment rate in % (+)	StatSA 2011b
Access to infrastructure	Infrastructure index (+)	ECCSEC 2012
Land degradation	Soil erosion index (+)	UCT 2000

Capacity indicator	Measure	Data source
Access to information	% of HH with access to internet (+)	StatSA 2011b
Alternative on- farm income	% of agricultural HH in other agricultural activities (+)	StatSA 2011a
Soil fertility	clay content and base status of the soil index (+)	UCT 2000
Surface water	Surface water/agricultural land ratio (+)	DEA 2015

Crop-dependent population affected (B-5a)

B-5a: Number of workers in agriculture with crops damaged or destroyed



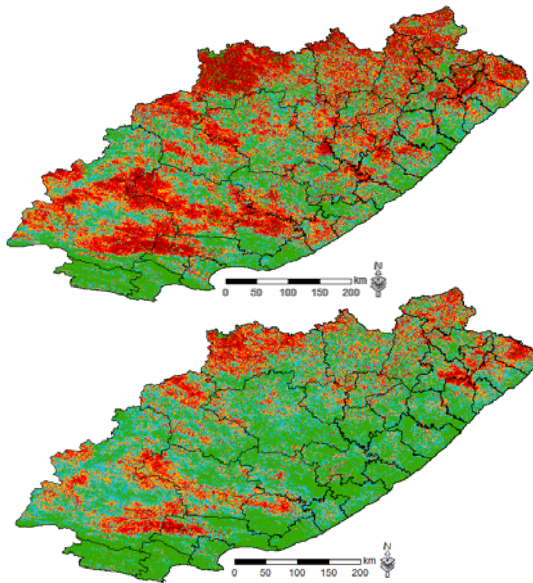
Assessment of agricultural drought risk

Agricultural drought risk

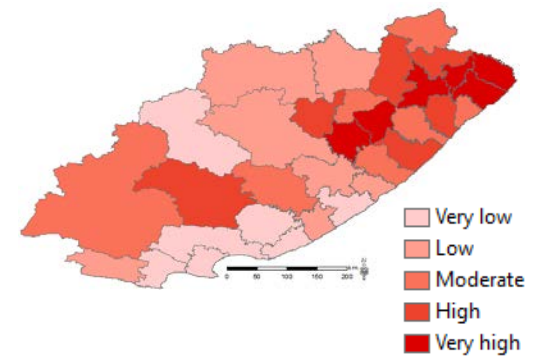
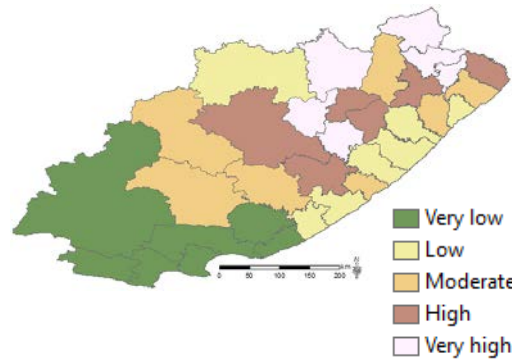
Hazard

Exposed elements

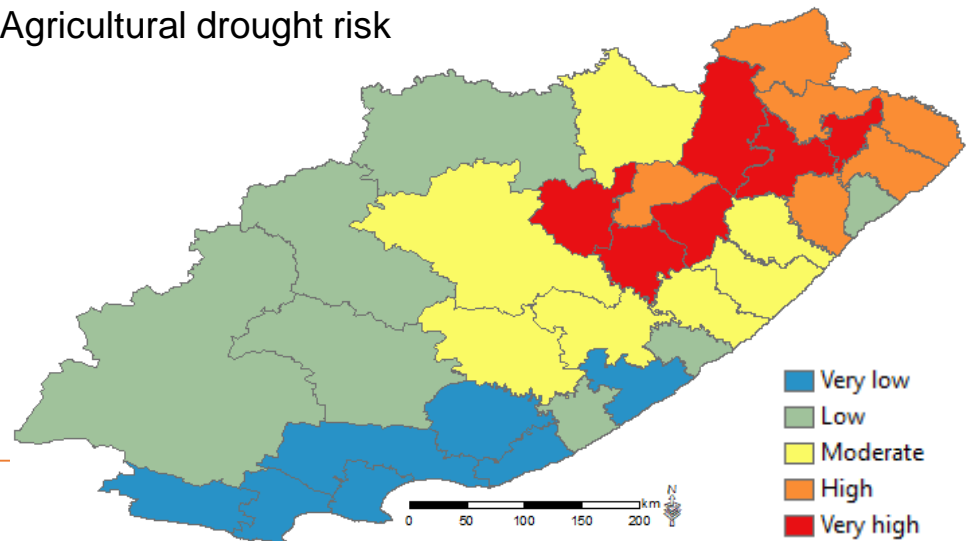
Vulnerability



- D0 (VCI > 40)
- D1 (VCI 40 to >30)
- D2 (VCI 30 to >20)
- D3 (VCI 20 to >10)
- D4 (VCI <=10)



Agricultural drought risk



Strengths and Weaknesses

Strengths

- Rely on free and open data
- simple index calculation
- get information on the actual risk instead of only the hazard
- Get relevant actors to the table
- Inter-/Transdisciplinarity

Weaknesses

- Validation missing – drought event database
- Drought characteristics – move away from global approaches but locally applied ones needed – time intensive!
- Inter-/Transdisciplinarity



**Thank you very much for
your attention!**

Dr. Valerie Graw

valerie.graw@uni-bonn.de

Center for Remote Sensing of Land Surfaces (ZFL), University of Bonn

