



Space-Based Information for Emergency Management in China (2021-2022)

Liu Longfei
National Disaster Reduction Center of China

01

**Disaster
Situation**

02

Strategic plan

03

Applications

04

**International
cooperation**



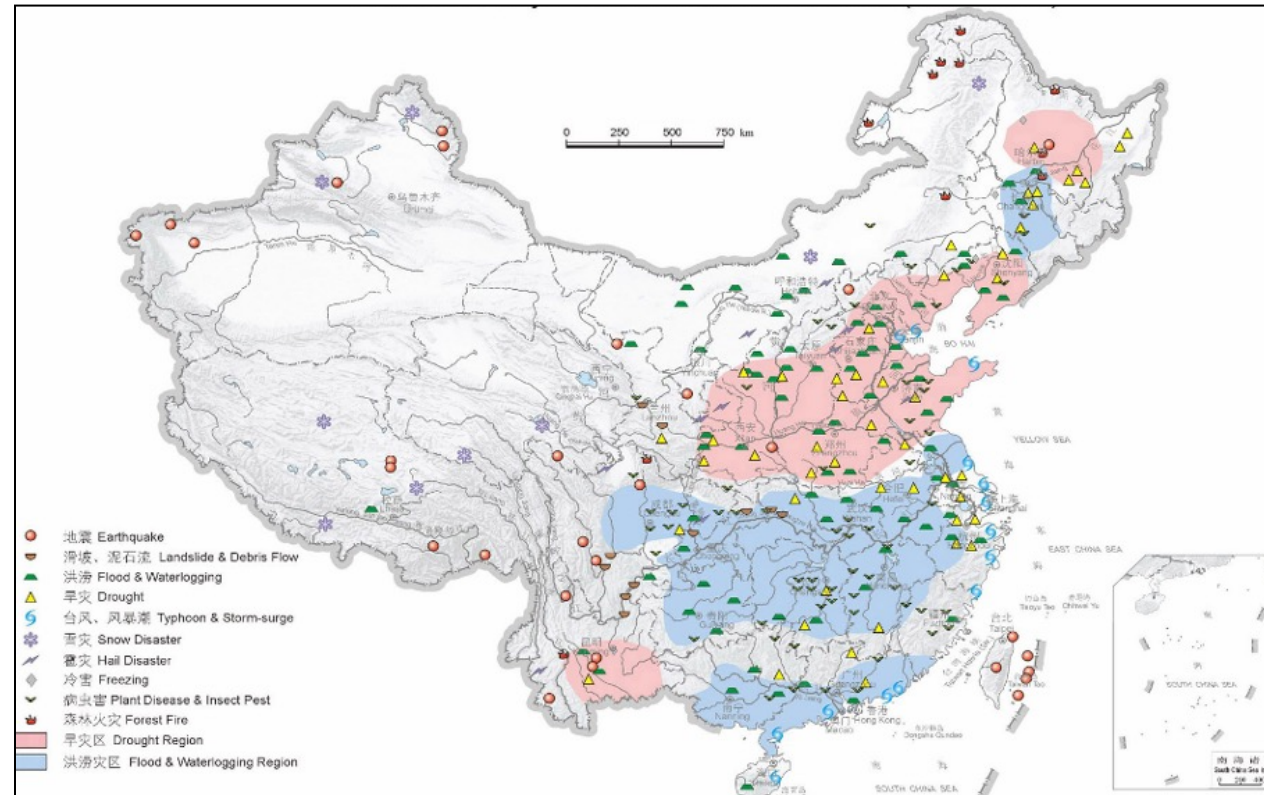
01

**Disaster Situation
(2021-2022)**

» Disaster situation

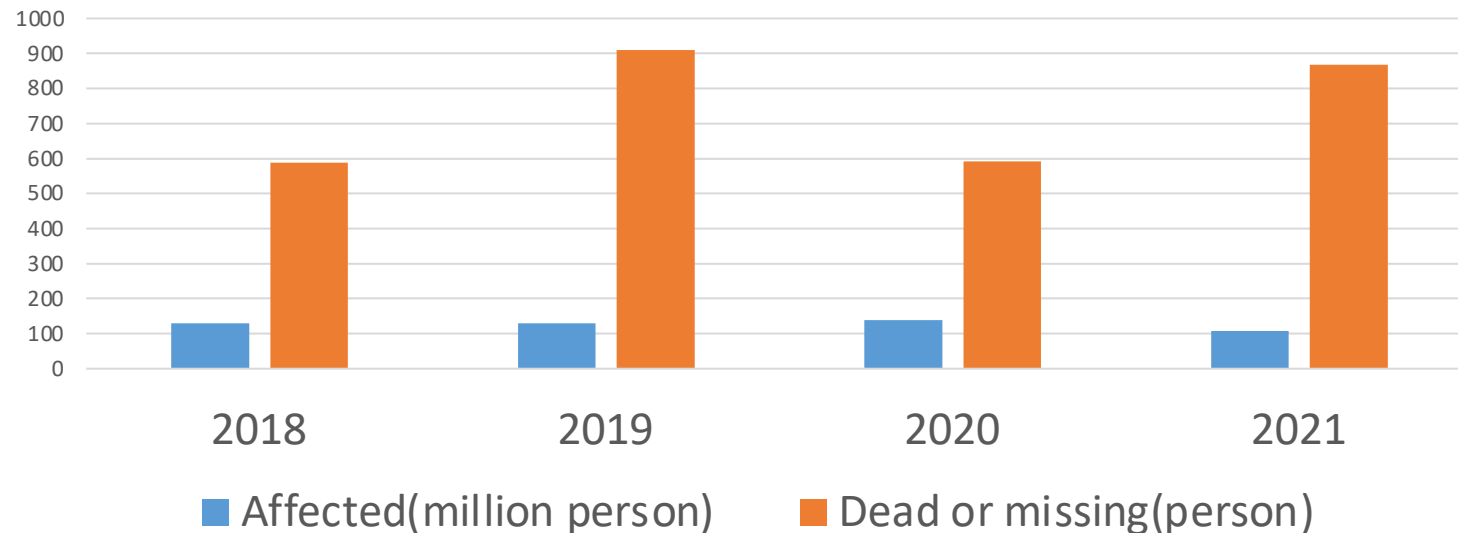
China is one of the countries affected by most of the natural disasters in the world

Spatial Distribution of Major Disaster in China





According to statistics, natural disasters affected **107** million people, **867** people are **missing or lost** life last year(2021) and for the first quarter of 2022, natural disasters affected **9.5** million people, caused **6** people died, and the direct economic loss was **15** billion Yuan.





From July 17 to 23, 2021, Henan Province was hit by a heavy rainstorm. The disaster affected **14.786** million people, with **398** people dead or missing, and direct economic loss of **120.06** billion Yuan.





02

Strategic Plan

» Emergency Satellite Observation Constellation

The “14th Five-Year (2021-2025) Plan for National Emergency Management System” was issued by the State Council in February 2022.

Establishing **an Emergency Satellite Observation Constellation** was one of its important way to strengthen the capacity of risk monitoring, early warning and emergency rescue, and to foster the modernization of the emergency management system and capacity.

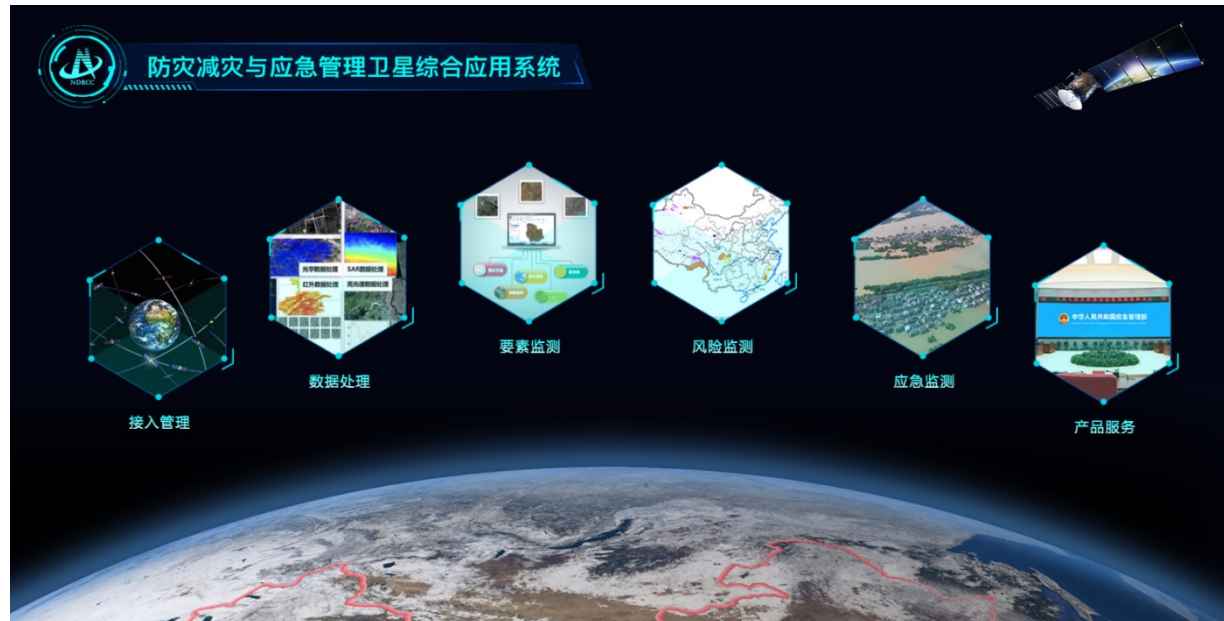


03

Applications

» Enhance the capacity of integrated application system

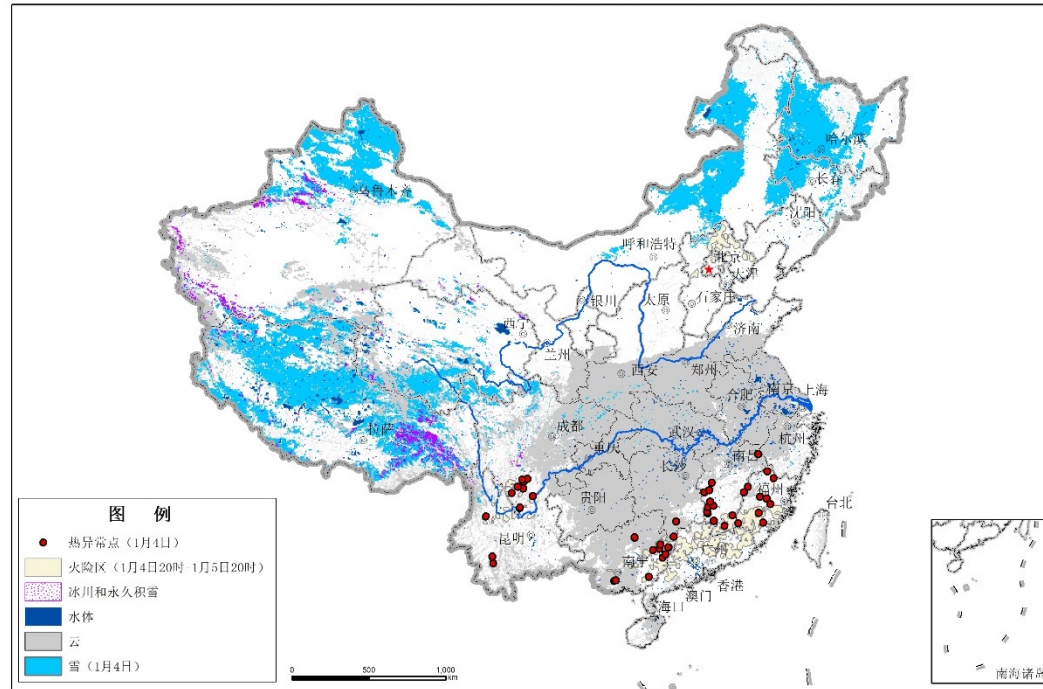
Steady progress for the construction and operation of integrated application system, formed an application framework and procedure for disaster risk monitoring, emergency response, and started the application for safety production.



» Applications

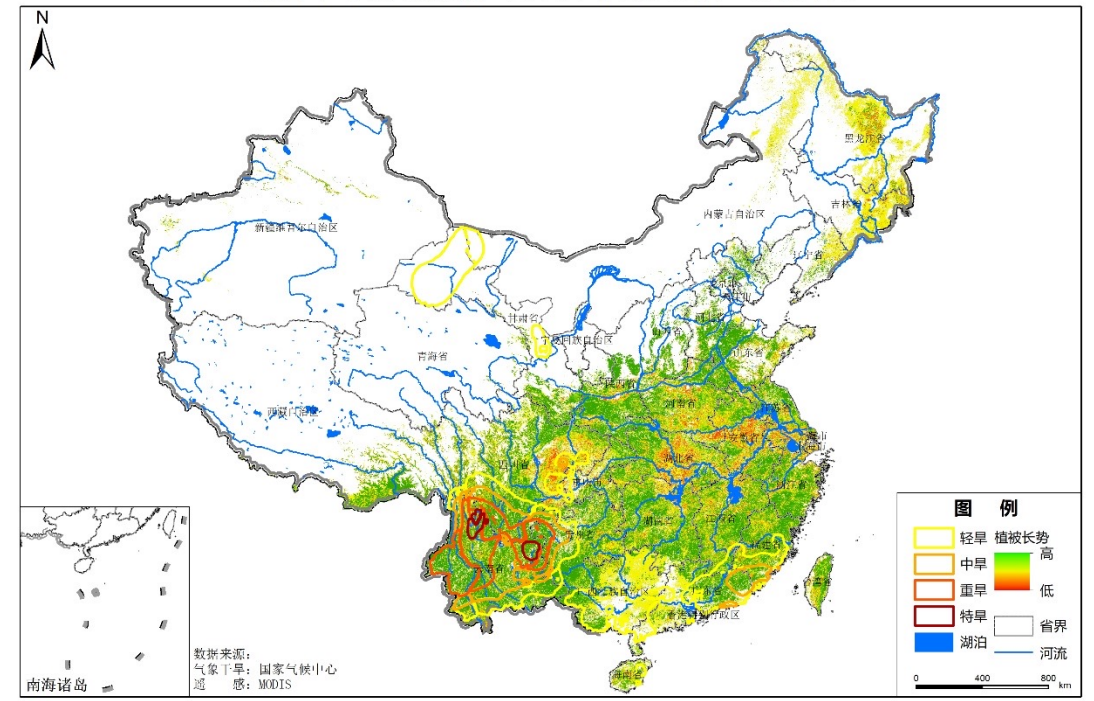
Risk monitoring

全国灾害风险综合监测图（2022年1月5日）



应急管理部国家减灾中心（应急管理部卫星减灾应用中心）

全国干旱遥感监测（2021年3月22日-4月6日）



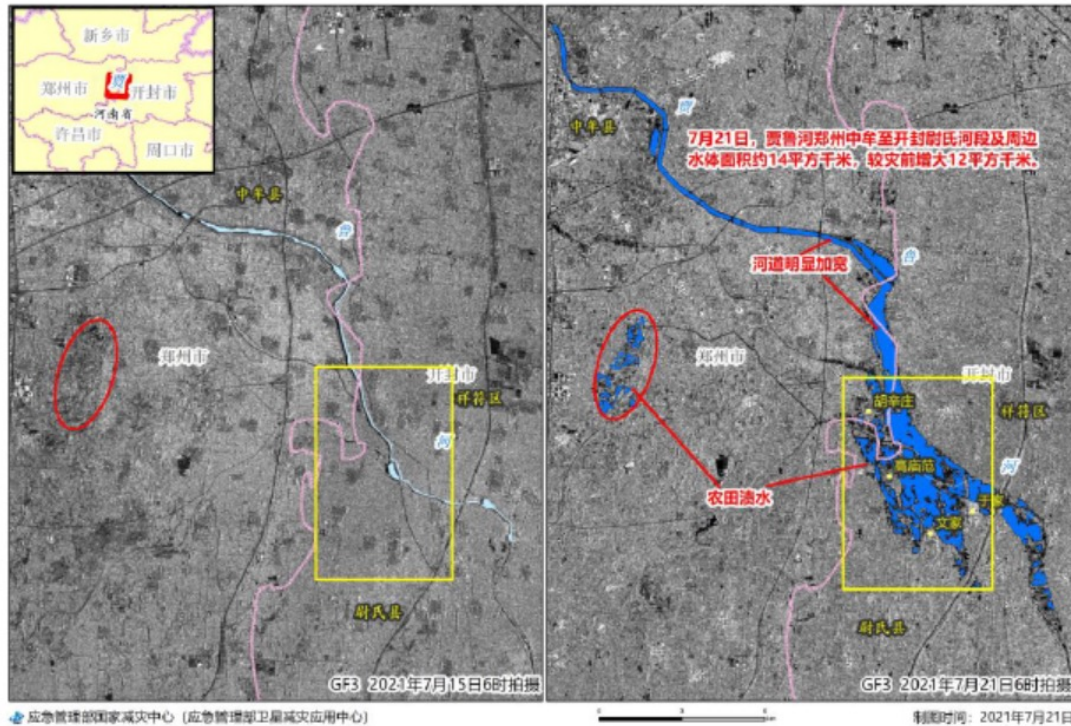
应急管理部国家减灾中心（卫星减灾应用中心）

Hot-spots monitoring for forest fire, snow cover monitoring, water area motoring, drought monitoring, etc;

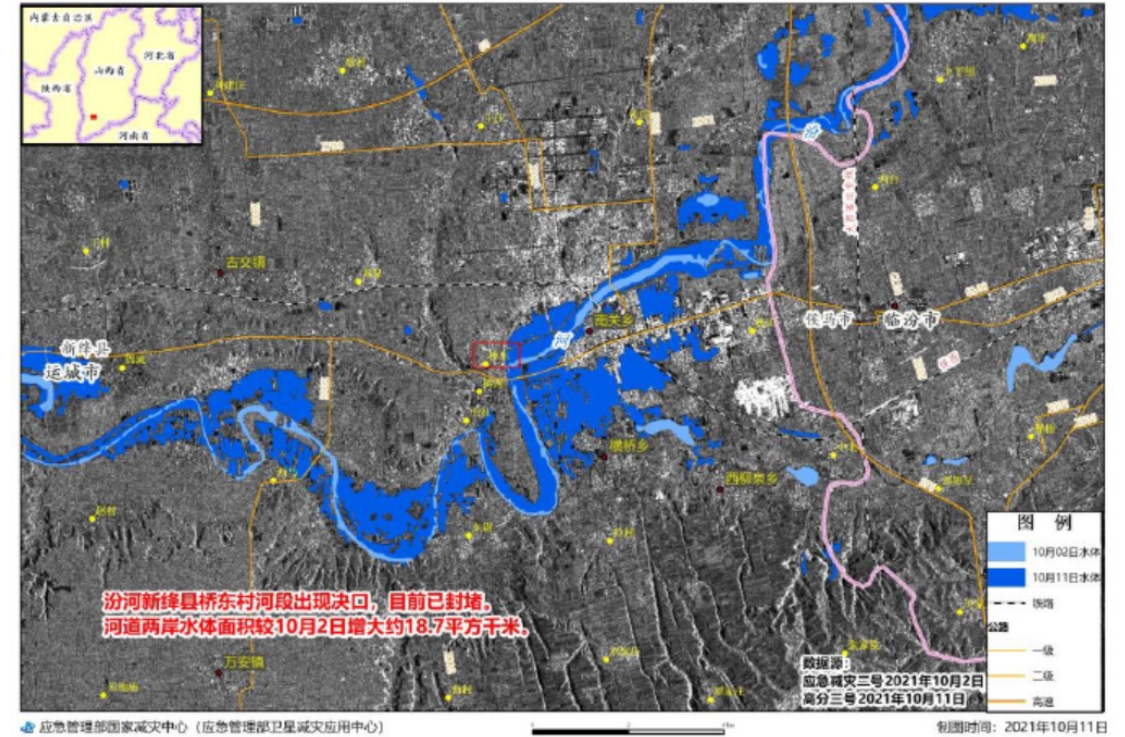
» Applications

Emergency response: Flood monitoring

贾鲁河沿岸洪涝灾害遥感监测图



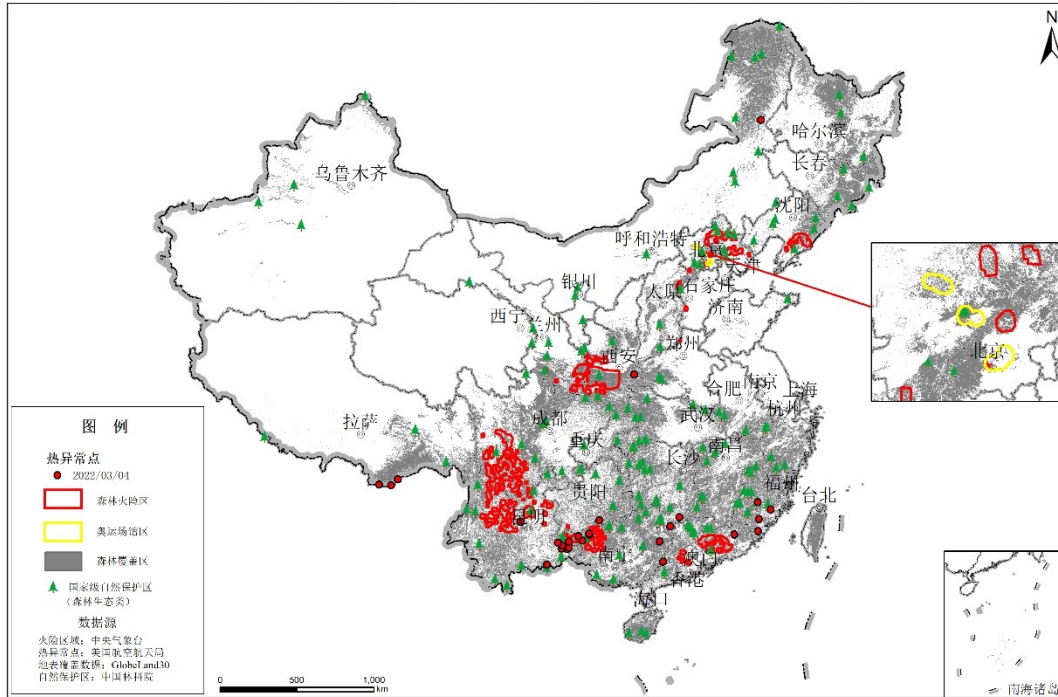
山西省运城市新绛县汾河周边洪涝灾害监测图



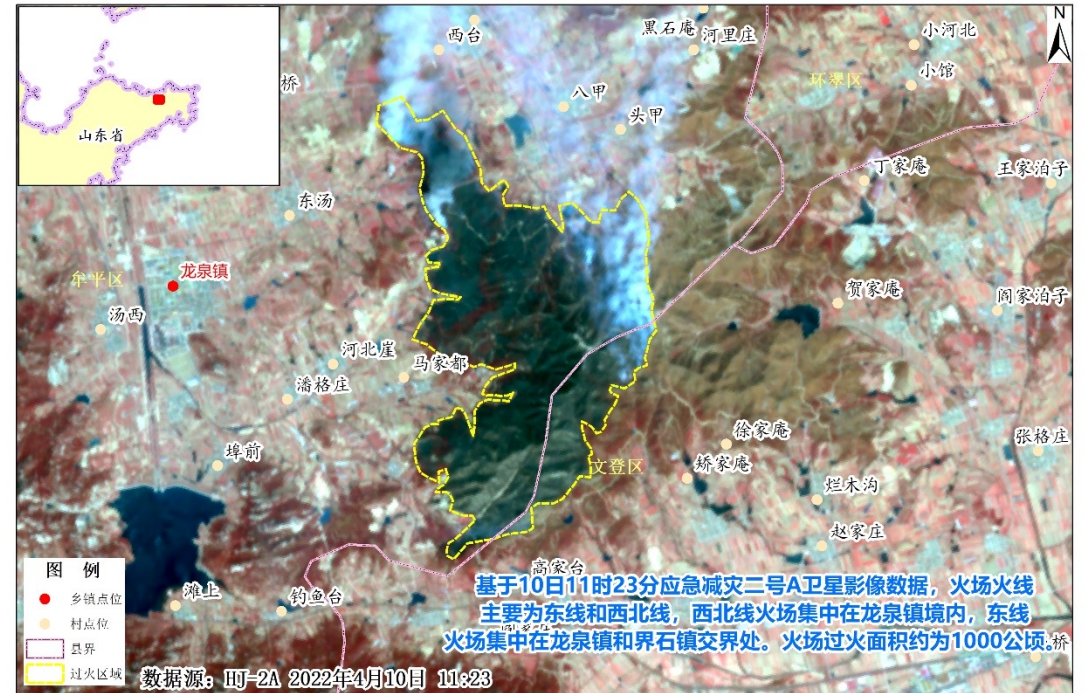
» Applications

Emergency response: Forest fire monitoring

全国森林火灾风险监测图（2022年03月05日）



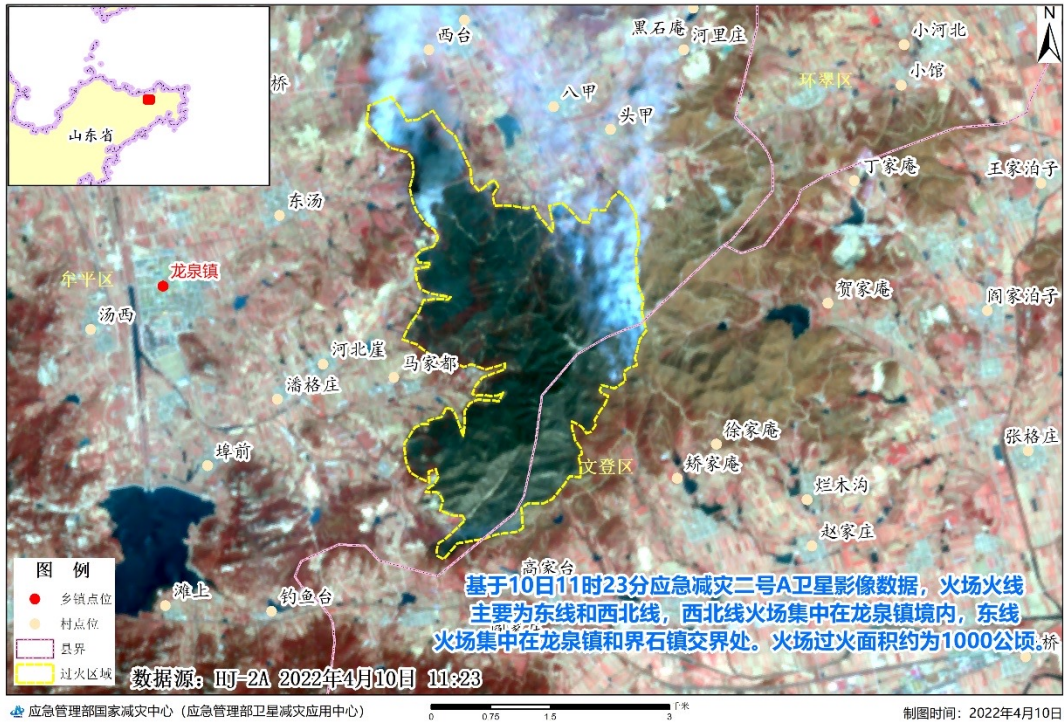
山东省威海市文登区与烟台市牟平区交界山火遥感监测图 (二)



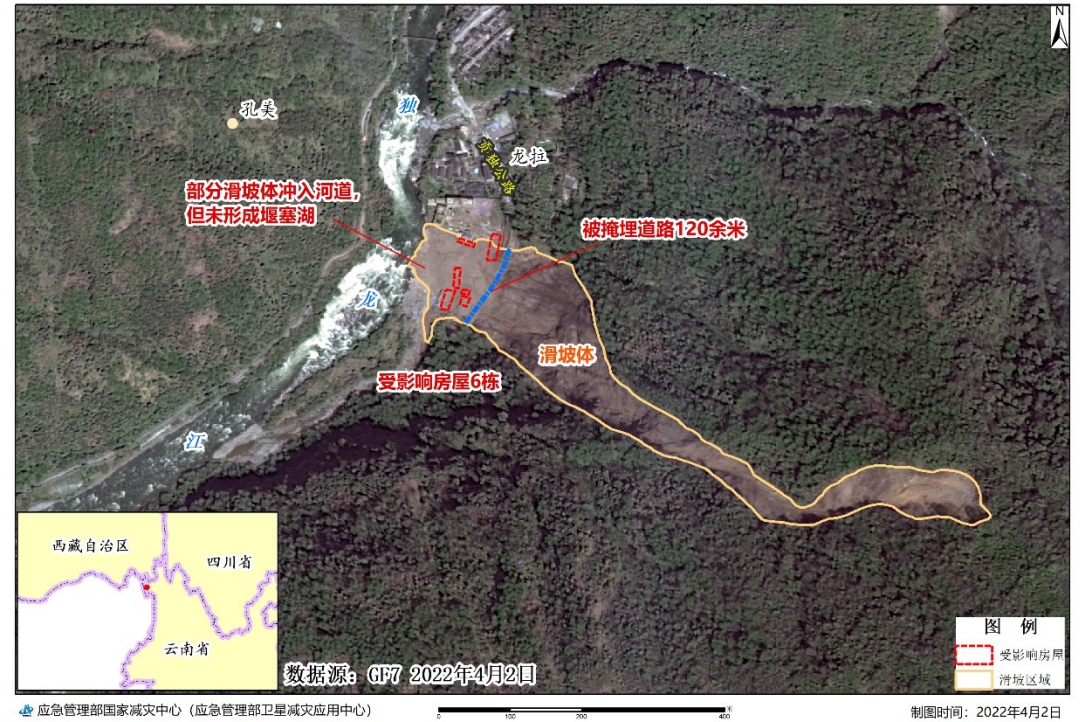
» Applications

Emergency response: Earthquake and landslide

山东省威海市文登区与烟台市牟平区交界山火遥感监测图（二）



云南省贡山县独龙江滑坡遥感监测图





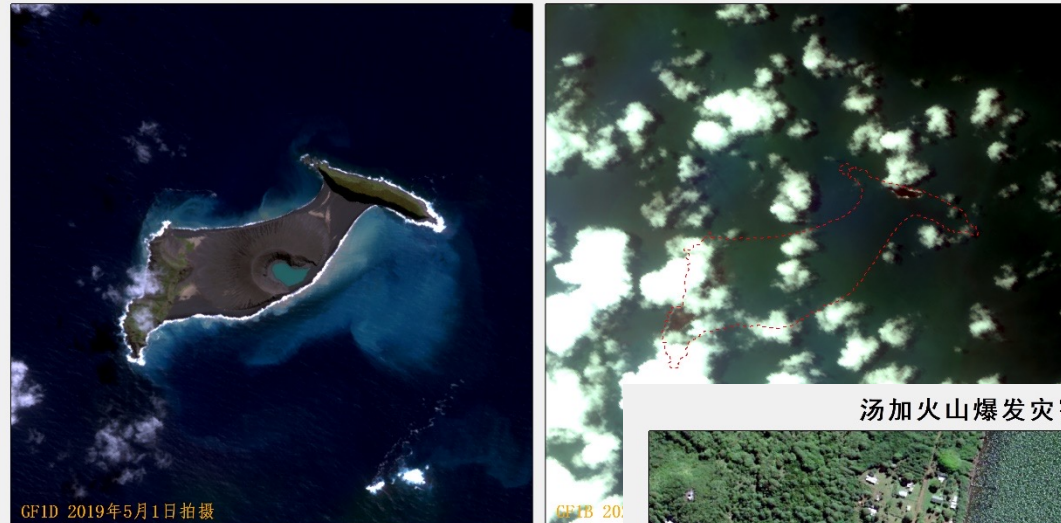
04

International Cooperation

Emergency response

Hunga Tonga volcano

汤加火山爆发灾害卫星遥感监测-火山口



应急管理部国家减灾中心 (应急管理部卫星减灾应用中心)

0 0.5 1 2 千米

汤加火山爆发灾害卫星遥感监测-诺穆卡岛



2 千米

制图时间: 2022年1月17日

汤加火山爆发灾害卫星遥感监测-诺穆卡岛 (局部)



应急管理部国家减灾中心 (应急管理部卫星减灾应用中心)

0 50 100 200 米

制图时间: 2022年1月17日

» International Cooperation

UN-SPIDER

Continue to support annual conferences, technical advisory support and emergency response



Work as the project manager

GEO GROUP ON
EARTH OBSERVATIONS

Actively participate in disaster reduction activities under GEO, AOGEO and other international initiatives



Earth Observations
for Asia-Oceania

» International Cooperation

Project : Integrated Application research of Earth Observation under the Sendai Framework (2020-2022)

Continue to carry out the project with aim to support the monitoring of indicators of the Sendai Framework through earth observation technology

Pilot projects : will demonstrate in Laos, Sri Lanka and Nepal



Thank you for your attention !

Contact:

Liulongfei: liulongfei@ndrcc.org.cn

