



Global warming and negative impacts on Egypt

Prof. Alaa ElNahry



- Global warming, refers to the rise in average surface temperatures on Earth.
- As overwhelming scientific consensus, climate change is due primarily to the human use of fossil fuels, which releases CO₂ and other greenhouse gases into the air.
- The gases trap heat within the atmosphere, which can have a range of effects on ecosystems, including **rising sea levels**, severe weather events, and droughts that render landscapes more susceptible to wildfires.



lala666

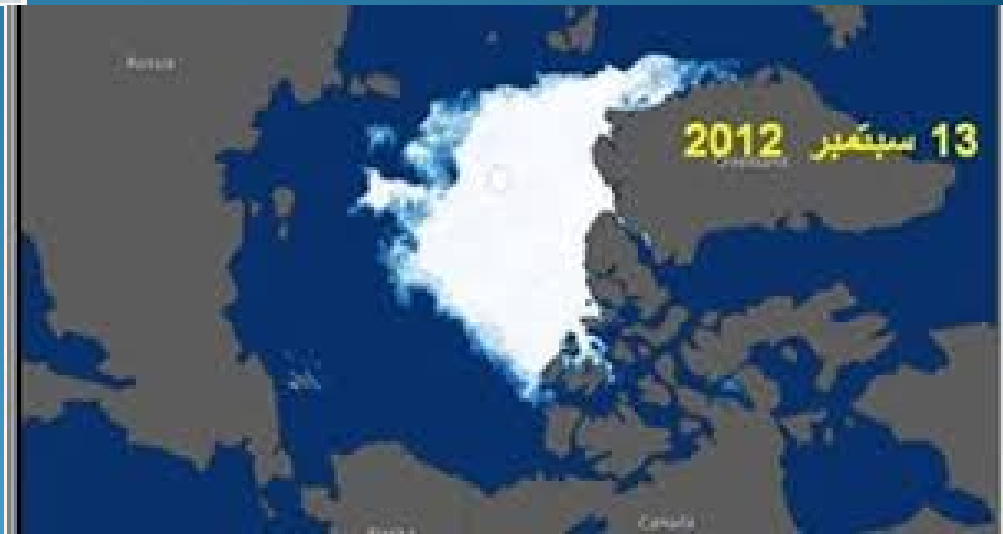
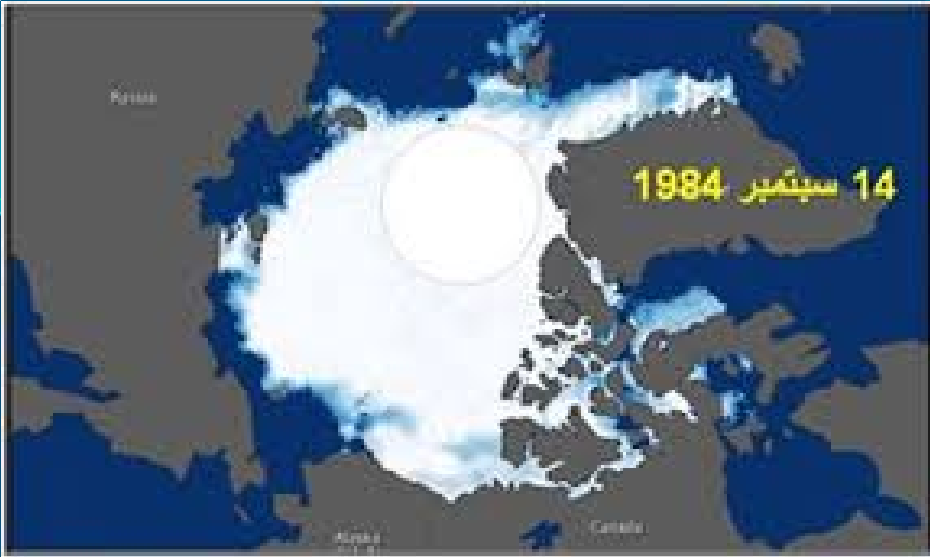
"People need to understand that ,the effects of climate change on the planet won't go away, at least not for thousands of generations."

-**Sea level rise** is one of the most compelling impacts of global warming. However, its effects are just starting to be seen.

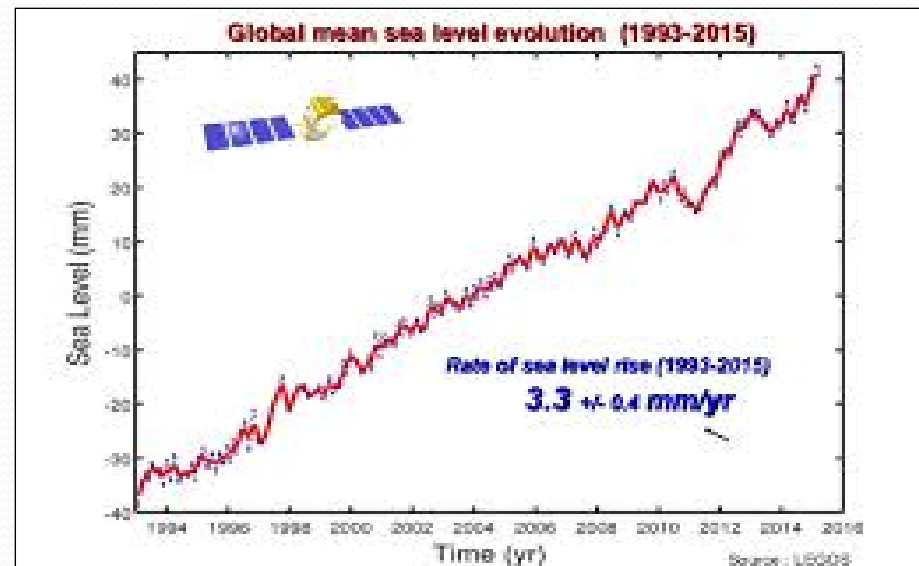
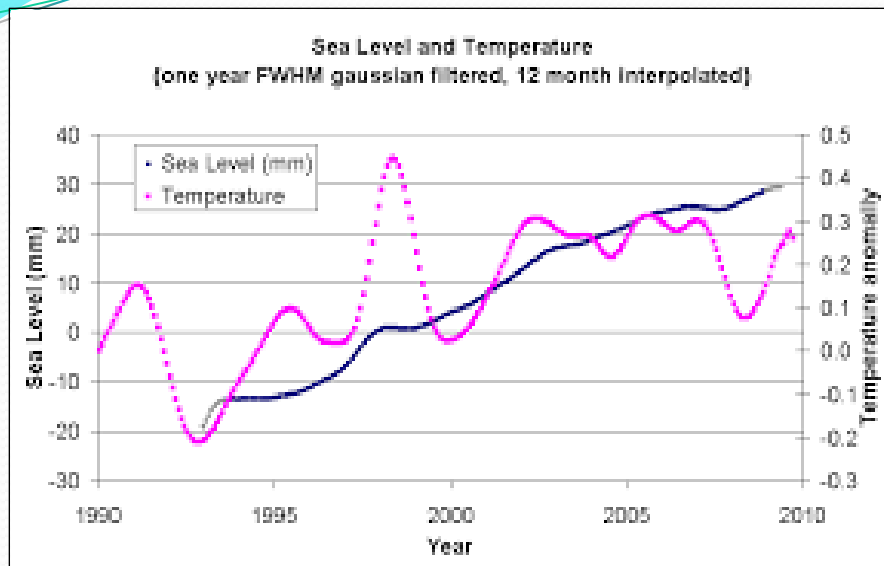
-**The latest IPCC report** calls for sea level rise of just **one meter** by the year **2100**.

-In this latest analysis, the scientists looked at four different sea level-rise scenarios based on different rates of warming, from a low end to a higher rate.

With just **two degrees Celsius** warming in the **low end scenario**, sea levels will rise about **25 meters**. With **seven degrees** at the **high-end scenario**, the rise is estimated at **50 meters**.



Rising sea levels due to the melting of the polar ice caps



1984



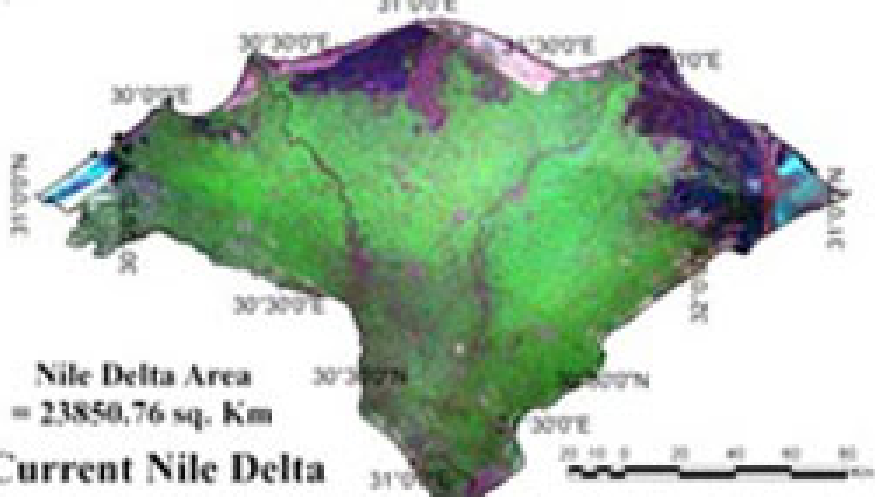
1984



**Rosetta apex sinking during
the period of 1984 -2000**



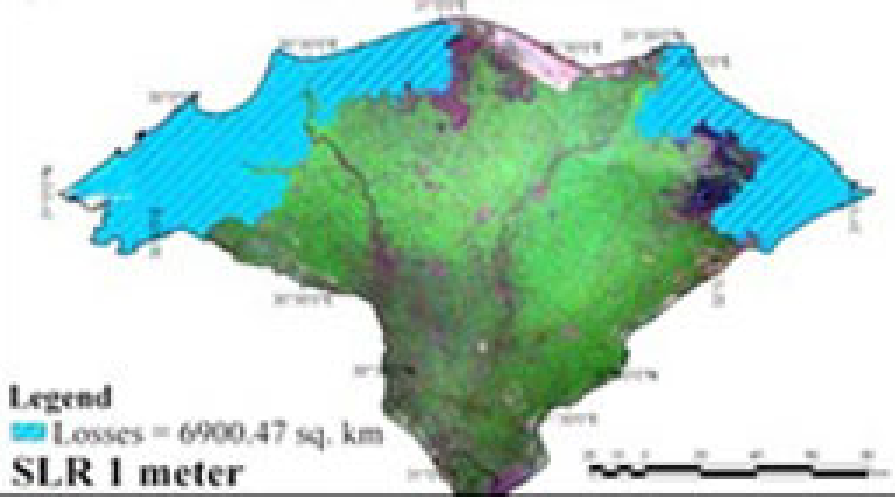
Mediterranean Sea



Nile Delta Area
= 23850.76 sq. Km

Current Nile Delta

Mediterranean Sea

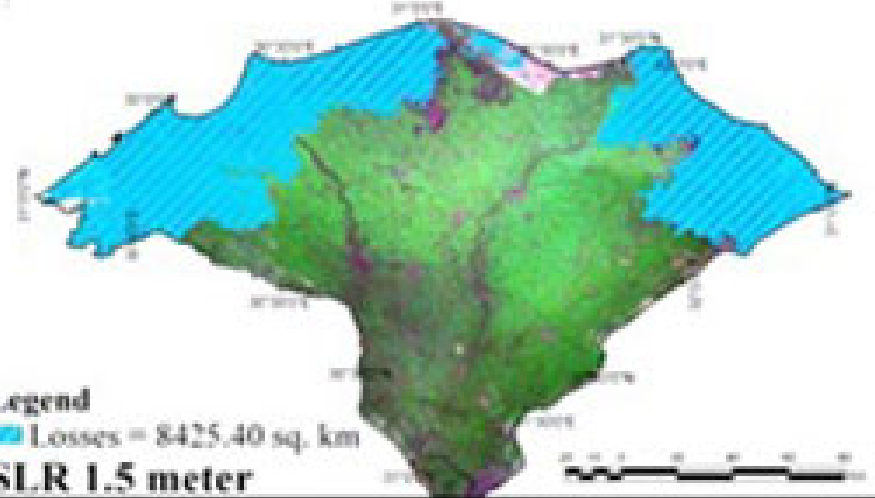


Legend

Losses = 6900.47 sq. km

SLR 1 meter

Mediterranean Sea

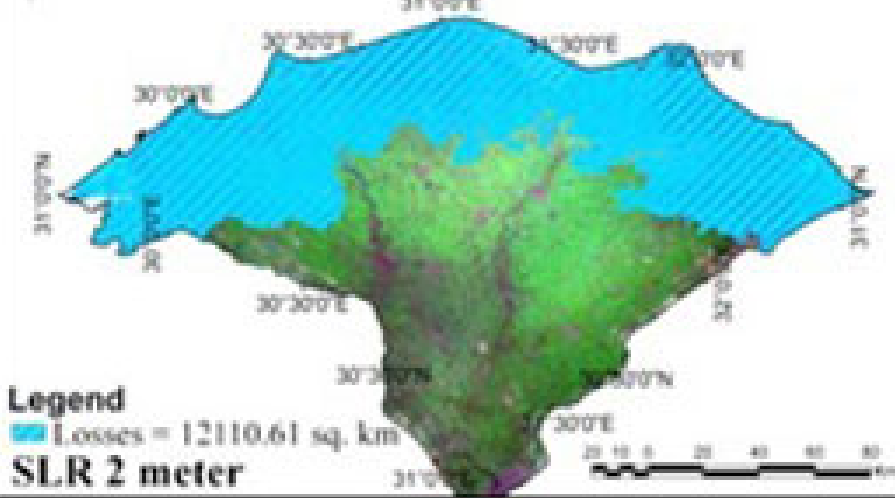


Legend

Losses = 8425.40 sq. km

SLR 1.5 meter

Mediterranean Sea



Legend

Losses = 12110.61 sq. km

SLR 2 meter



Climate change impacts on Egypt

- Flooding could displace

- 1- Entire communities in the coastal zone of the low-lying Nile Delta w
 - 2- The fertile agricultural heartland of Egypt's 90 million people .
(The Intergovernmental Panel on Climate Change (IPCC) predicts that the **Mediterranean will rise 30 cm to 1 meter** this century).
 - 3- More than half of Egypt's people live within 100 km of the coast.
(World Bank study estimated that a one-meter sea level rise could displace 10 percent of the population).
- Officials say salt water could submerge or **soak 10 to 12** percent of farmland in the world's largest wheat importer.



Climate change impacts on Egypt

the UN Human Settlements Programme (UN-Habitat), says a sea level rise of 50 cm will lead to

- 1- Major coastal erosion, flooding and a rise in the water table,
- 2- **Forcing two million people** in Egypt's north coast and delta region to abandon their homes.
- 3- Wiping out 214,000 jobs, cost US\$35 billion in lost property income.
- 4- Destruction of world-famous historic, cultural and archaeological sites. **So all the advanced countries have to help Egypt to keep heritage of Humanity**



lala666

Thank you