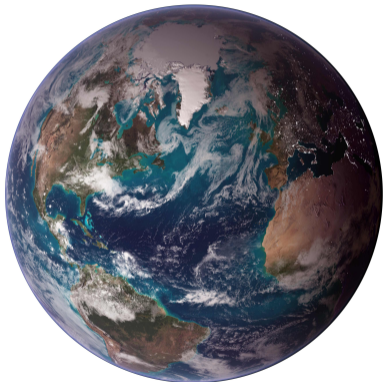


# SABIA-Mar Satellite Mission

## Committee on the Peaceful Uses of Outer Space COPUOS

**Carolina B. Tauro (Principal Investigator)**  
**Comisión Nacional de Actividades Espaciales - Argentina**  
**[carolina.tauro@conae.gov.ar](mailto:carolina.tauro@conae.gov.ar)**



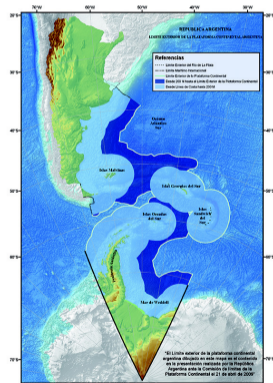
- ▶ They covers 70 % of the Earth's surface and play a fundamental role in our daily lives.
- ▶ Oceans regulate the global climate and the carbon cycle.
- ▶ Oceans are source of natural resources.
- ▶ It is vitally important to understand the ecology, bio-geo-chemistry and the threats faced by the oceans in order to make a sustainable use of their resources.
- ▶ Ocean Color remote sensing is a very useful technique for monitoring our oceans and coast.

The SABIA-Mar is a satellite mission mainly focused in ocean color studies. It was born as a great contribution to regional coastal studies in the framework of...

- ▶ Argentinian National Space Plan.
- ▶ SAC-D/Aquarius mission continuity.
- ▶ Argentinian Pampa Azul initiative.
- ▶ Sustainable Development Goals contribution.
- ▶ International Ocean Color and climate change communities.



Web Images.  
©2022 CONAE



## SABIA-Mar mission

### Main Objective

To obtain information over oceans in all the world, particularly on Argentinian and South America coastal waters, focused on:

- Primary productivity
- Ecosystems and maritime habitats
- Fishery management
- Water quality



Global (800 m)



Scenarios

Regional  
South America Coast  
(200/400 m)

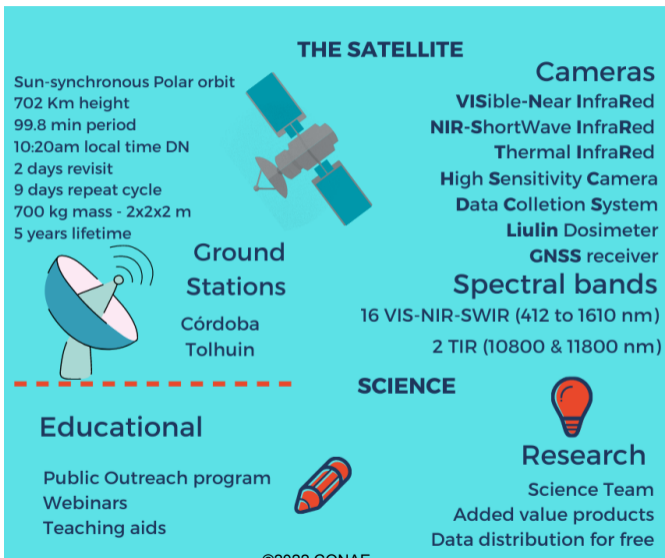


### PRODUCTS

- Water Leaving Radiance
- Chl-a concentration
- Kd(490)
- PAR
- Turbidity
- Sea Surface Temperature

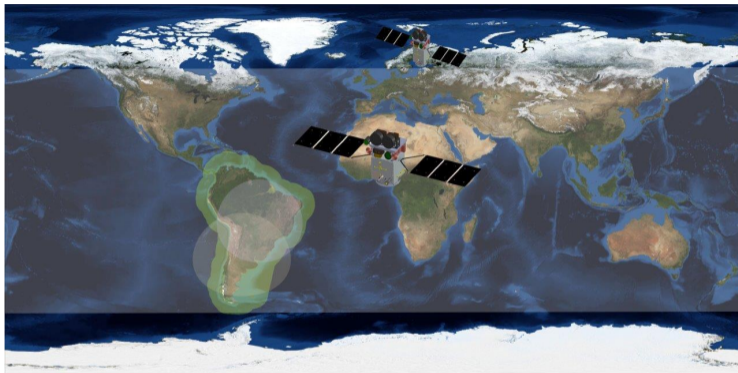


©2022 CONAE

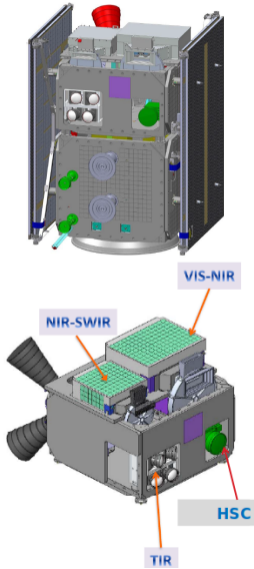


©2022 CONAE

Todos los derechos reservados/All rights reserved



- ▶ Regional: Coastal zone of South America coming to about 650 km offshore, in addition to Inland Waters in South America, with spatial resolution of 200m. For regional studies and monitoring of Vitória-Trindade Ridge and Malvinas Islands regions 1000 km coverage is requested.
- ▶ Global: geographical coverage in latitude shall be 120 degrees ( $\sim \pm 60^\circ$  latitude) with seasonal changing limits, at a 800m of spatial resolution.



Camera	Swath	Band	$\lambda_0$	FWHM	GSD		$L_{typ}$	$L_{max}$	S/N*
			[nm]	[nm]	Regional [m]	Global [m]	$[W m^{-2} \mu m^{-1} sr^{-1}]^{**}$	NETD**	
VIS/NIR	1496km	B0	412	10	200	800	79	602	1000
		B1	443	10	200	800	68	664	1000
		B2	490	10	200	800	52	686	1000
		B3	510	10	200	800	45	663	1000
		B4	555	10	200	800	34	643	1000
		B5	620	10	200	800	21	570	1000
		B6	665	10	200	800	16	536	1000
		B7	680	7.5	200	800	15	517	1500
		B8	710	10	200	800	12	489	1000
		B9 <sup>†</sup>	750	10	200	800	10	447	600
		B11 <sup>†</sup>	865	20	200	800	5.9	333	400
NIR/SWIR	1495km	B9 <sup>†</sup>	750	10	400	-	10	447	600
		B10	765	10	400	-	7.8	430	600
		B11 <sup>†</sup>	865	20	400	-	5.9	333	400
		B12	1044	20	400	-	3.7	236	400
		B13	1240	20	400	-	0.88	158	250
		B14	1610	60	400	-	0.29	82	250
TIR	800km	B15	10800	900	400	400	300	323	0.3
		B16	11800	900	400	400	300	323	0.3

<sup>†</sup> Bands 9 and 11 are repeated in both cameras.

\* for VIS/NIR & NIR/SWIR @  $L_{Typ}$  at GSD:1000 m.

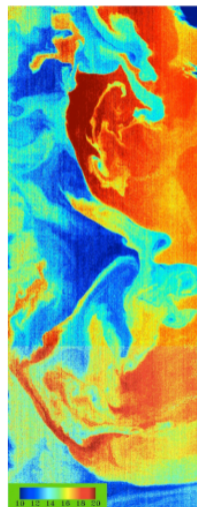
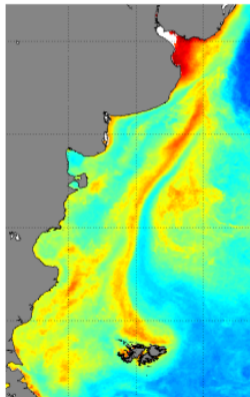
\*\* for TIR in °K.

©2022 CONAE

Todos los derechos reservados/All rights reserved

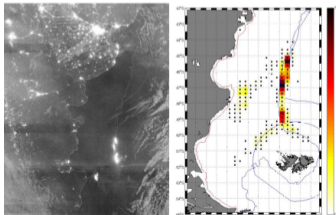


- ▶ Users: International Ocean Color Community, Government institutions, Decision makers, Research and Education
- ▶ Processing levels: L1, L2, L3.
- ▶ Format: Products will be generated in netCDF4 format with CF and ISO metadata.
- ▶ Data Policy: SABIA-Mar data will be available for free in CONAE's website.



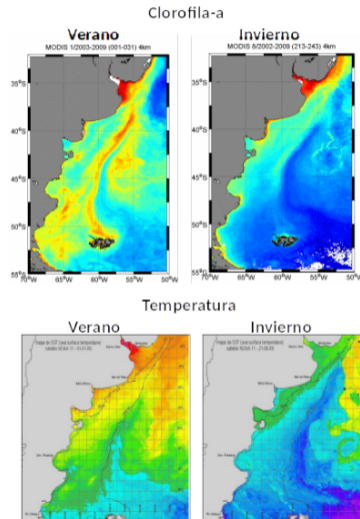
Chlorophyll-a concentration, Sea Surface Temperature, Data Collection System.  
©2022 CONAE

- ▶ Surveillance and navigation support.
- ▶ Fisheries and aquaculture.
- ▶ Health: toxic algae blooms, water quality, coastal sediments.
- ▶ Emergencies.
- ▶ Ocean circulation and dynamic
- ▶ Climate change and global trending.



Night high sensibility NPP/VIIRS, Jigger boats frequency (INIDEP), MODIS image  
©2022 CONAE

Todos los derechos reservados/All rights reserved



Based on MODIS images.

# ¡Muchas Gracias!

[carolina.tauro@conae.gov.ar](mailto:carolina.tauro@conae.gov.ar)

[www.argentina.gob.ar/ciencia/conae](http://www.argentina.gob.ar/ciencia/conae)