



Ministerio de Ciencia,  
Tecnología e Innovación  
Argentina

# Space and Global Health Working Group

Current activities in environmental, vector  
borne diseases in Argentina.  
**Identifying strength and weakness**

**PhD. Ximena Porcasi**



# Gulich Institute



## Higher Education, Interdisciplinary Research and Social Impact

### IG Mision

To train Human Resources at postgraduate level on the theory, concepts and techniques of science and technology applied to the remote sensing of the earth, oceans and atmosphere. **Through research and development activities, innovation and transfer.**

#### Research Lines:

- Landscape Epidemiology
- Monitoring and modelling of Environmental Markers (Water and Air)
- Biodiversity and ecosystem services
- Agriculture and food safety
- Early Warning and Emergencies

<https://ig.conae.unc.edu.ar/>

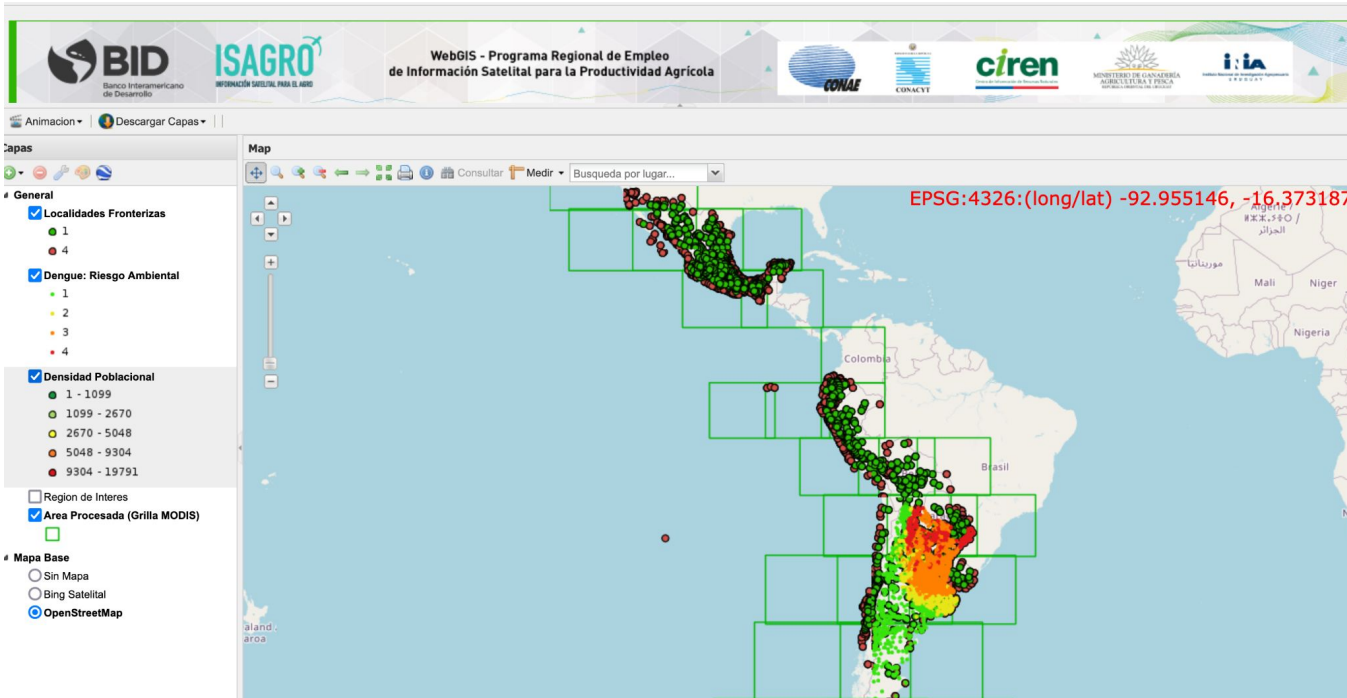


Foster Institutional collaboration



# Tools for sharing knowledge: development and transfer

SIRIS Project: retrieve/develop spatial data on social determinants, population movement, climate, land cover change, vector modelling.



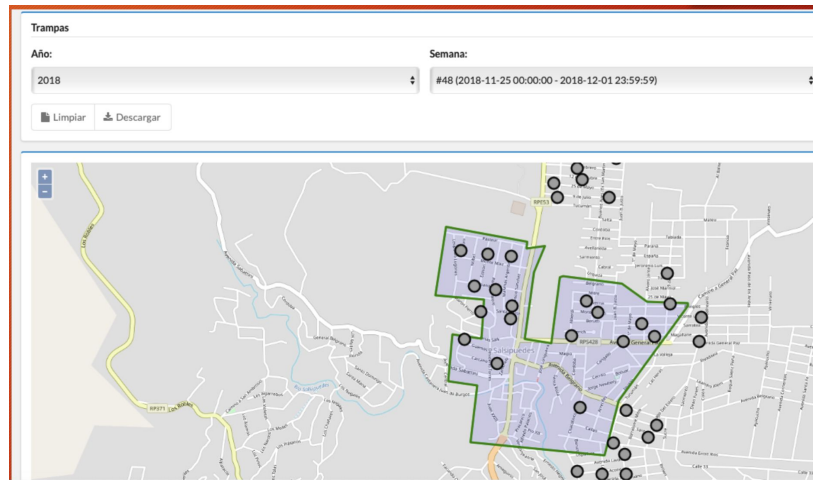
Dengue Show meaningful variables through a web server.

Chile, Argentina and Paraguay

<http://www.isagro.org.ar/>

# Collaborative innovation and transfer project with state partners: DETEM Project: City level monitoring for *A. aegypti*

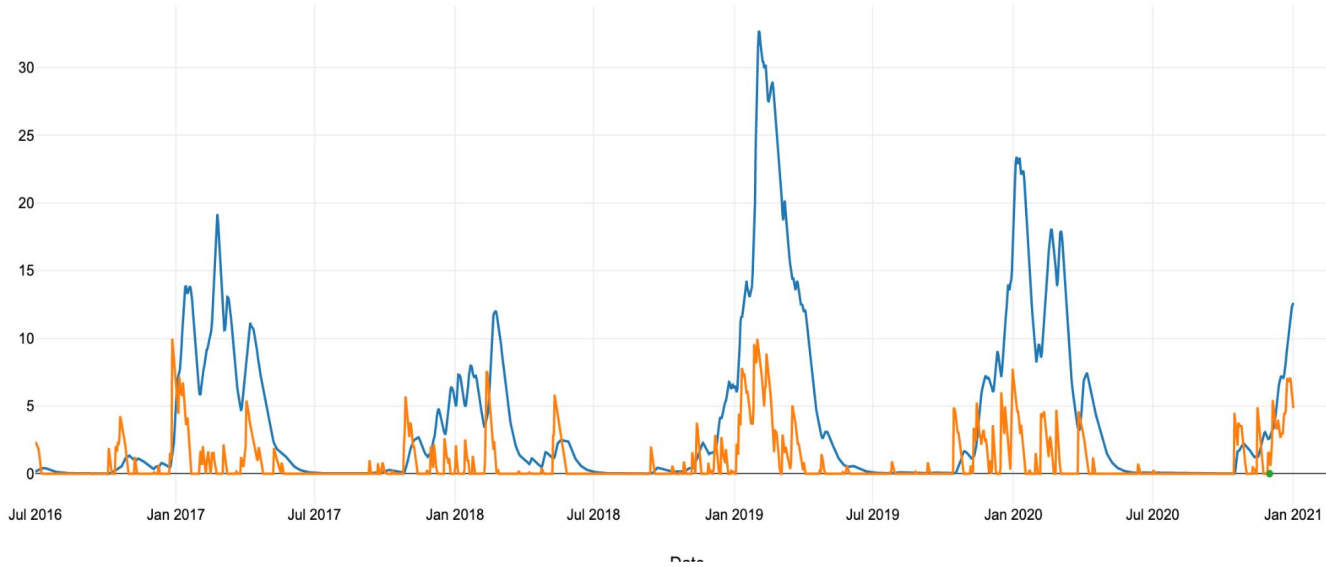
- 1) Produce a **mathematical prediction** of *A. aegypti* populations (density) based on RS data
- 2) Develop a system to **geo-locate and collect weekly field data (Mobile-App)**. And Visualize it in web-server



<https://detvecbba.gri.conae.gov.ar/login/>

# A e. populations dynamic predictive model based on RS and Forecast data (NOAA,

Cordoba

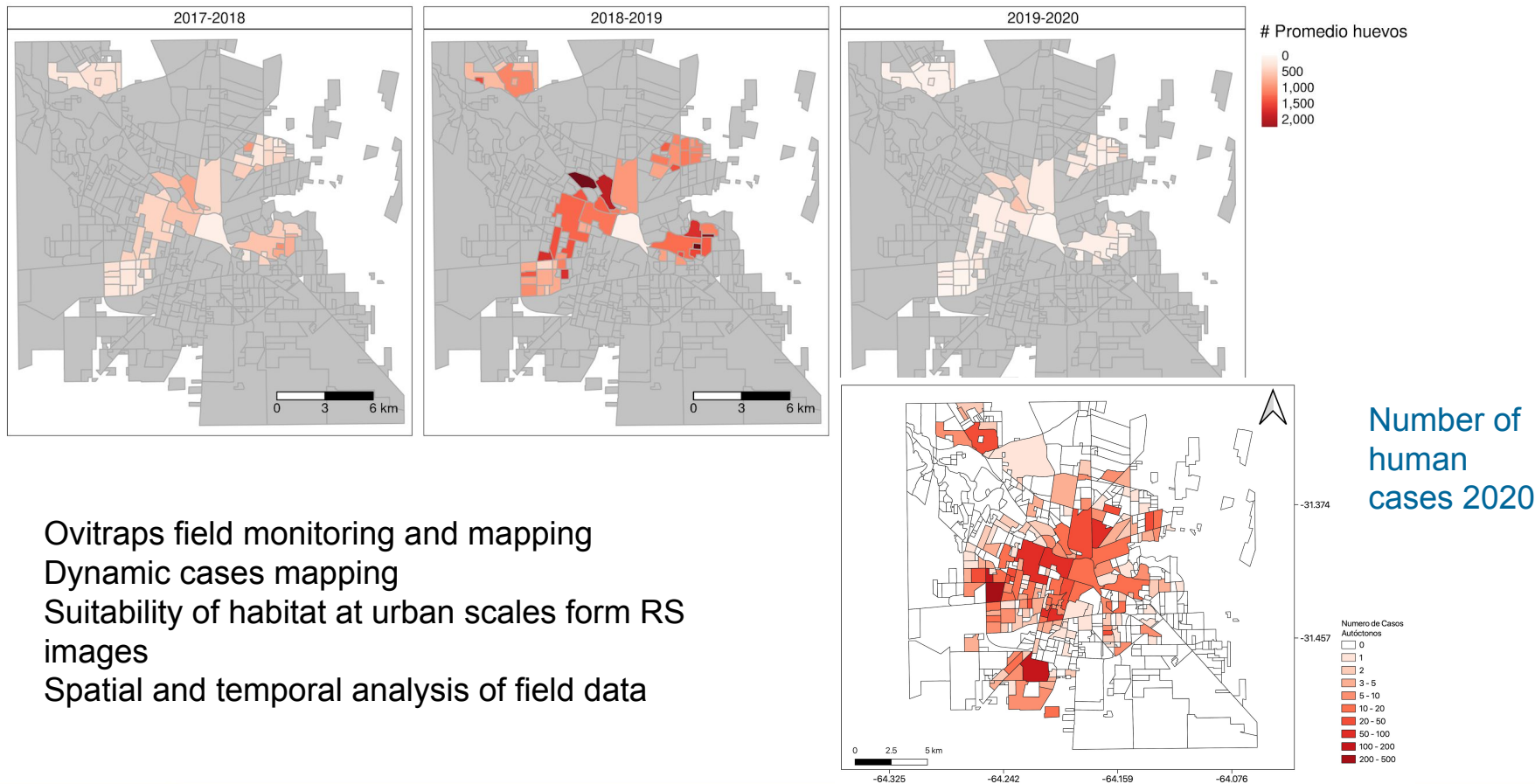


Adult *a. aegypti*  
Water content in  
containers

Aguirre et. al.. Ecological Informatics (September)

Implementation of a proactive system to monitor *Aedes aegypti* populations using open access historical and forecasted meteorological data.

# Other RS or spatial applications at city level (with Provincial collaboration)





# Towards a workflow for an operational mapping of *Aedes aegypti* at urban scale based on RS

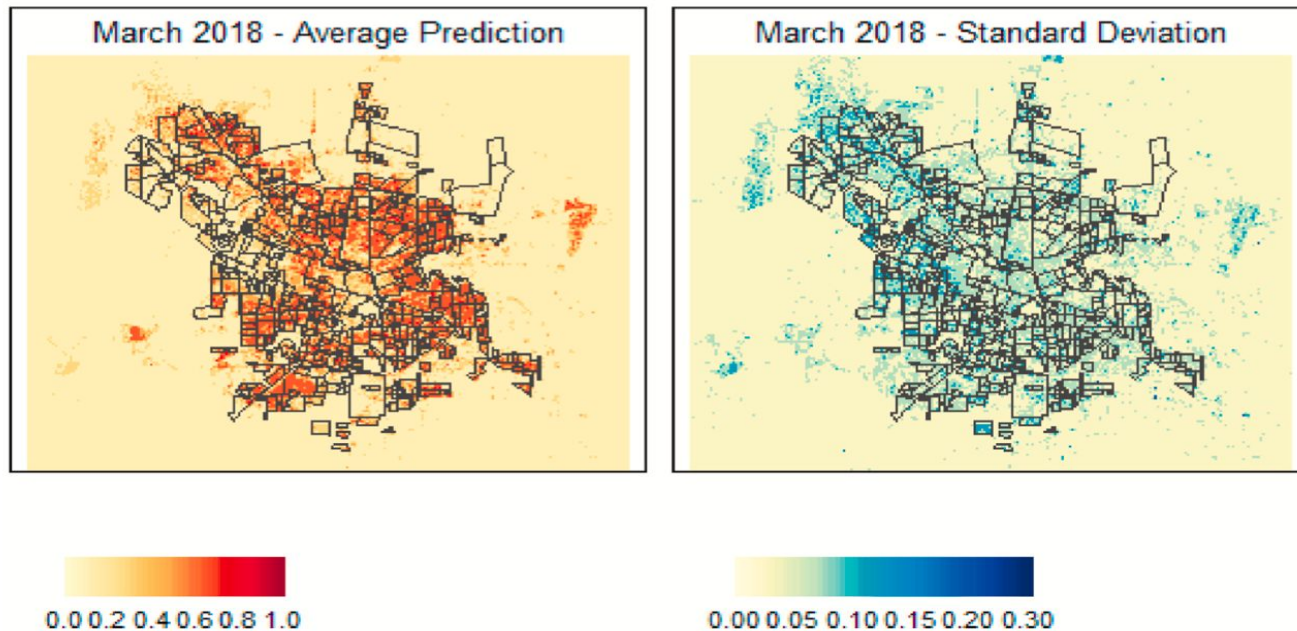


Fig. 3. Average predicted suitability for *Ae. aegypti* in Córdoba city and corresponding standard deviation.

<https://authors.elsevier.com/c/1dCnY8M-mmkFI6>

# National Health system interaction

Chagas: Chagas' Program **needs**: Data collection, geo-reference of rural houses, Vector surveillance maps and indicators, RS variables.

Capacity Building (Workshops and on-line courses in Health Ministry platform)

<https://ig.conae.unc.edu.ar/taller-estratificacion-de-riesgo-de-transmision-vectorial-de-la-enfermedad-de-chagas-en-argentina/>

Dengue: RS data, Vector modelling, **Web server**.

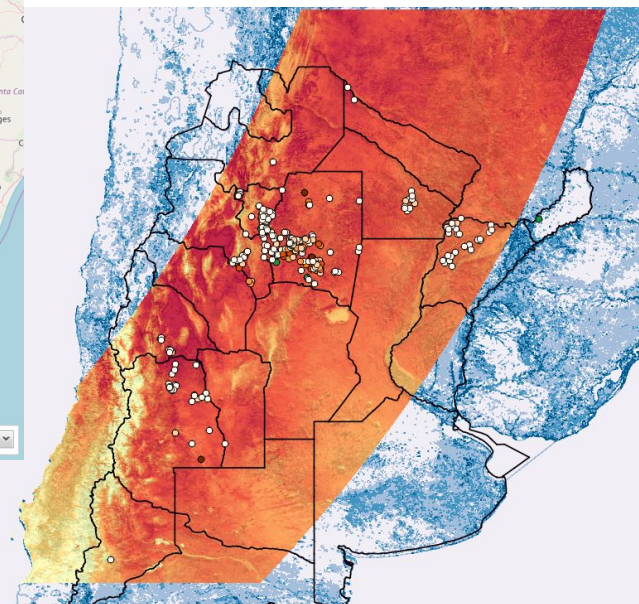
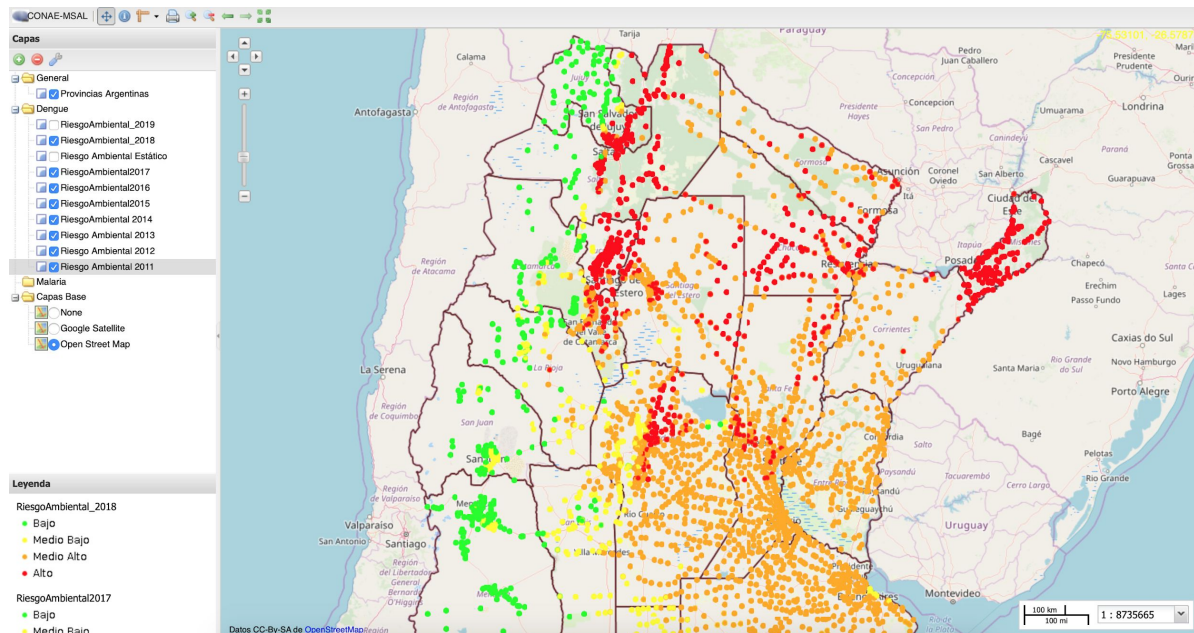
Climate Change and Vector Borne: Interdisciplinary Research Projects

Social-Environmental stratification for neglected diseases...and other exposures as risk indicators





# National Agreements between institutions Health Ministry (Dengue, Chagas)



# Training and capacity building



Doctorado en  
Geomática y  
Sistemas Espaciales



Maestría en  
Aplicaciones de  
Información Espacial



Diplomatura en  
Geomática  
Aplicada

**Master Degree** and **Doctorate** are also running at i. Gulich

Two **scholarship** for each degree are actually open for Latin America student..

In collaboration with Mundo Sano Foundation this Diploma Degree had 61 enrolled students in 2019 (41 fellow by MS).

It is an **on-line course** with (tutors) and, has 4 different modules on RS, GIS and SAR, with a final module on **Health Applications**. Available for Latin-America.

# ONG / (non governmental) interactions

Mundo Sano

Who we are NTDs How we do Chagas Space Media Center

🔍 f 🐦 📷 📺 in

**Innovation**

We work to transform the reality of people affected by neglected diseases

Ver más >

“Many achievements behind and many challenges ahead.”

DRA. SILVIA GOLD  
Presidenta de Mundo Sano

Our pillars

Equity

Awards to our projects

Neglected diseases

Fundación Mundo Sano contributes with field research to public policies

> 10 Scientific papers in the last 4 years.

Post-Graduate program in Geo-spatial applications on health

Sig-Web, Modelling platform for Early Warning and research.

<https://www.mundosano.org/en/>



# Many Thanks!!

[ximena.porcasi@conae.gov.ar](mailto:ximena.porcasi@conae.gov.ar)



Dr. Marcelo Scavuzzo

Mag. Sofía Lanfri

Lic. Jorge Rubio

Lic. Exequiel Aguirre

Dra. Verónica Andreo

Dr. Nicolás Frutos

Lic. Matías Scavuzzo

Agr. Cynthia Garay

Biol. Carla Rodriguez Gonzalez



<https://ig.conae.unc.edu.ar/feliz-aniversario-instituto/>

## Strength

- More than 15 years working
- Multiple contacts with health technicians/decision makers (National and Provincial)
- Different workshops focused in real problems in Latin America,
- Focus on social requirement/needs, health requirements.
- Integration with other important topics in Environment and Early Warning (One Health?)
- Increasing post-graduate activities, courses and formal accreditations (on-line capability)
- Well conformed IG community (graduates, professors, researchers)

## Hurdles and difficulties

- A few people fully contract for this activities (one)
- Personal communications more than institutional communication
- No formal protocols to share spatial data, different sources/owners of field data (cases, vector control, treatment, etc).
- Still poor knowledge in spatial data in Health System people..
- Poor and discontinued financial support (mainly came from interdisciplinary research projects).