



7th Meeting of the International Committee on GNSS
Beijing, China, 5-9, November 2012



Positioning Performance of BeiDou Navigation Satellite System

Qile ZHAO (zhaoql@whu.edu.cn), **Zhigang Hu**; **Jing Guo**;
Ming Li; **Xing Shu**; **Guo Chen**; **Chuang Shi**; **Jinglan Liu**

GNSS Research Center, Wuhan University





Contents



1 Status of BeiDou

2 Precise Orbit&Clock Determination

3 Positioning Performance of BeiDou

4 Multi-GNSS Application

5 Summary

7th Meeting of the ICG, Beijing, China, 5-9, November 2012



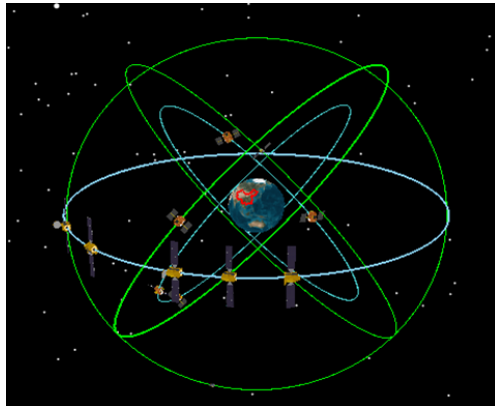
Status of BeiDou Navigation Satellite system



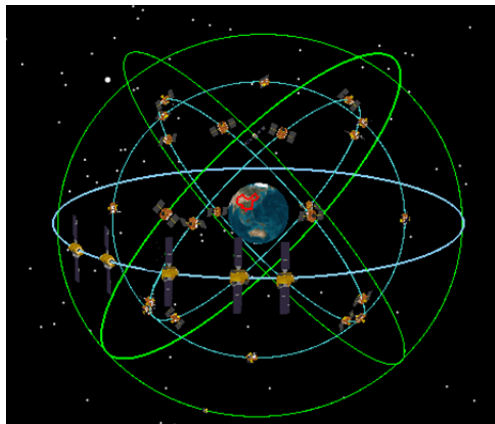
Sept.: 4GEO+5 IGSO+2MEO (In this presentation)

2012: 5GEO+5IGSO+4MEO (Operational Satellites, Regional Service)

2020: 5GEO+3IGSO+27MEO (Operational Satellites, Global Service)

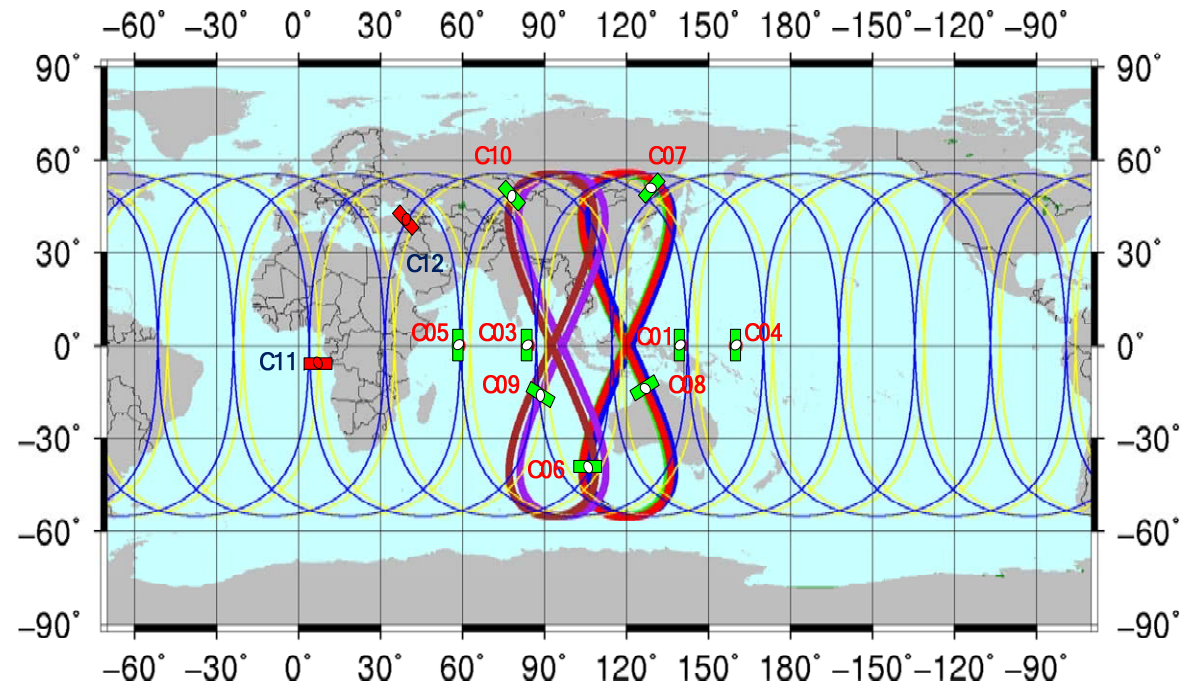


2012



2020

In this presentation



7th Meeting of the ICG, Beijing, China, 5-9, November 2012



Contents



1 Status of BeiDou

2 **Precise Orbit&Clock Determination**

3 Positioning Performance of BeiDou

4 Multi-GNSS Application

5 Summary

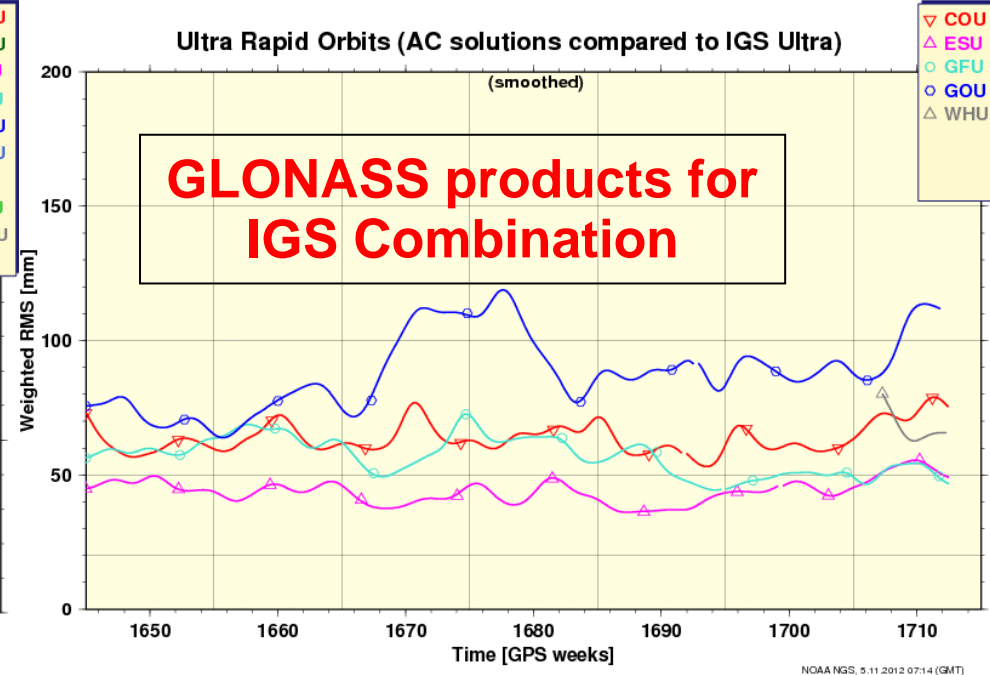
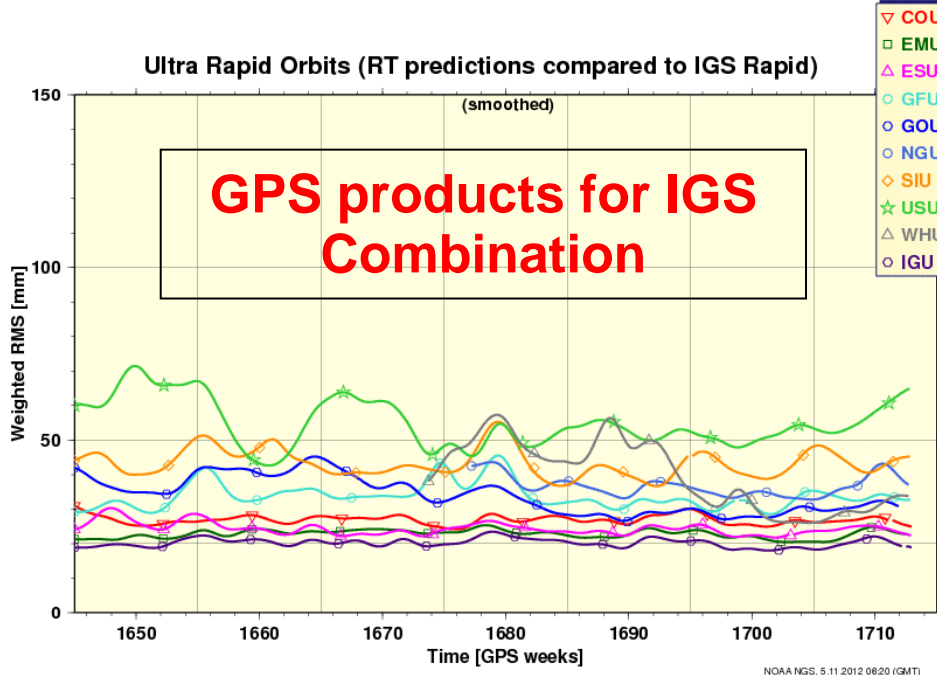
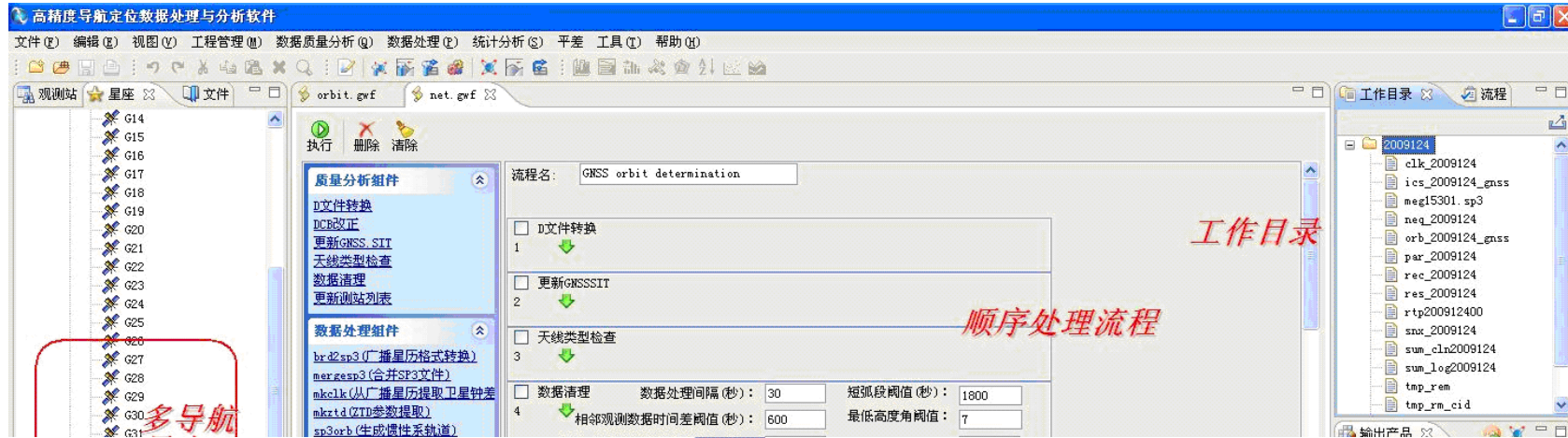
7th Meeting of the ICG, Beijing, China, 5-9, November 2012



Precise Orbit & Clock Determination



Software used



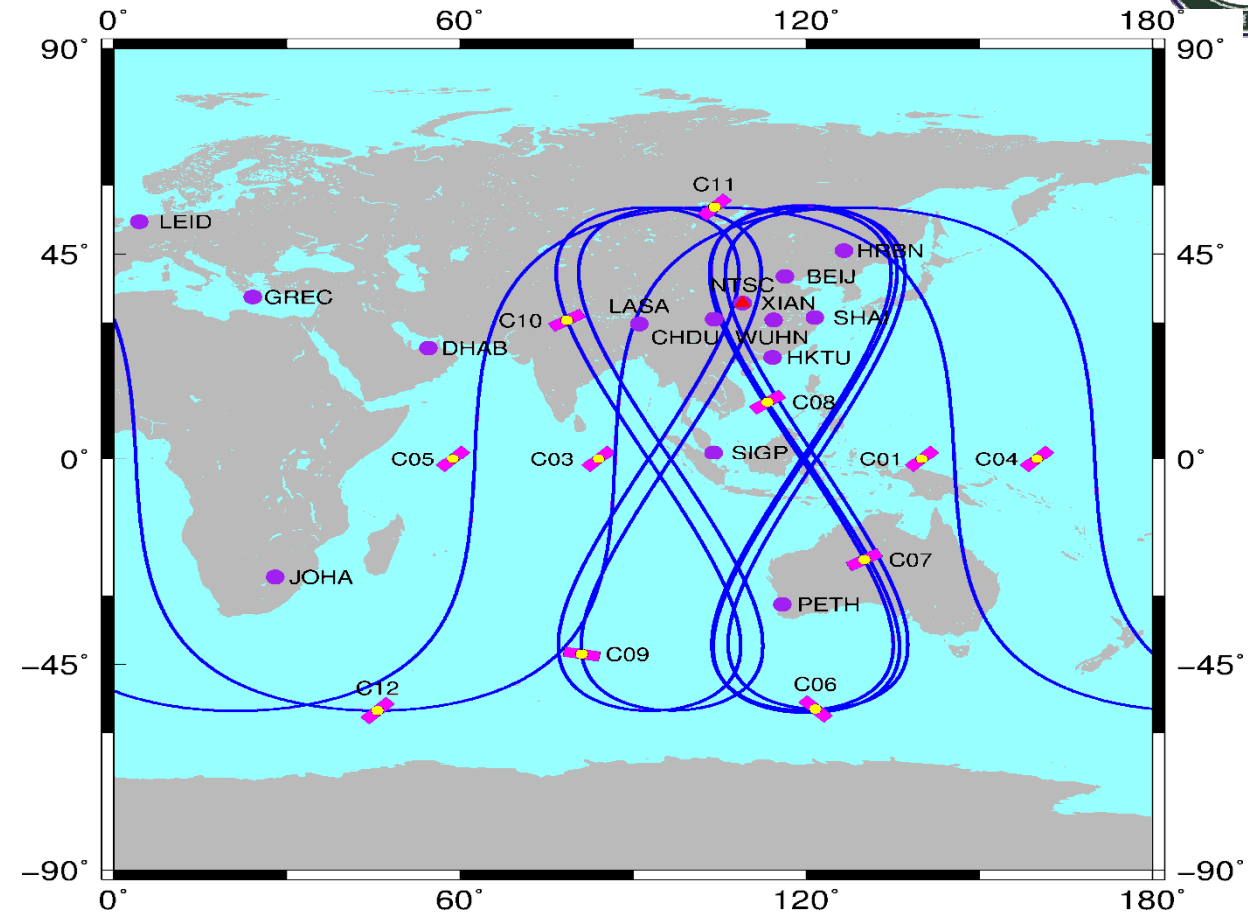


Precise Orbit&Clock Determination



Data used

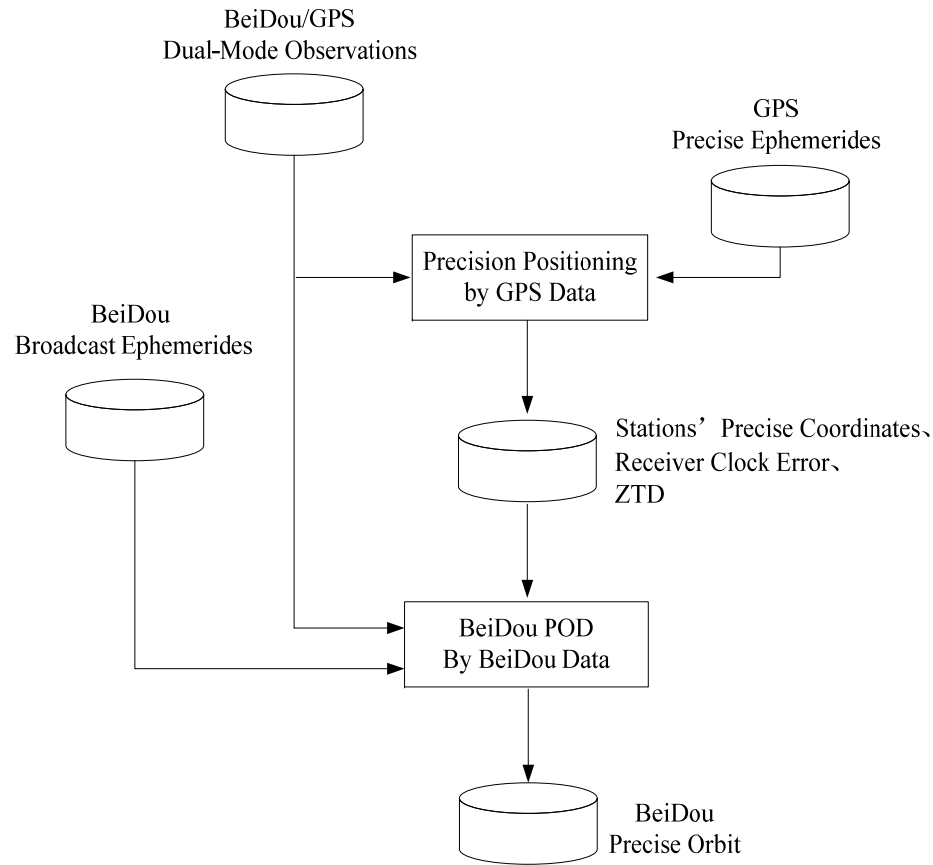
Data from 15 stations



The COMPASS Experimental Tracking Network (CETN), which is operated by GNSS Research Center, Wuhan University (WHU) with cooperation of our research partners around the world.



Precise Orbit&Clock Determination



Parameters	Model	
	GPS Satellite	BeiDou Satellite
Station Coordinate	Estimated	Fixed
Receiver Clock Error	Estimated	Fixed, Inter-system Time bias estimated
ZTD Parameter	Estimated, SAAS + GMF, 2 hours	Fixed
Satellite Orbit	Fixed, IGS Precise Ephemeris	Estimated
Satellite Clock Error	Fixed, IGS Precise Clock Error	Estimated
Gravity Field	EIGEN-CG03C (12X12)	EIGEN-CG03C (12X12)
N-Body perturbation	Sun, Lunar, Planetary	Sun, Lunar, Planetary
Tide	Solid Tide, Oceanic Tide(2010)	Solid Tide, Oceanic Tide(2010)
Solar radiation Pressure	BERN 9 parameters	BERN 9 parameters

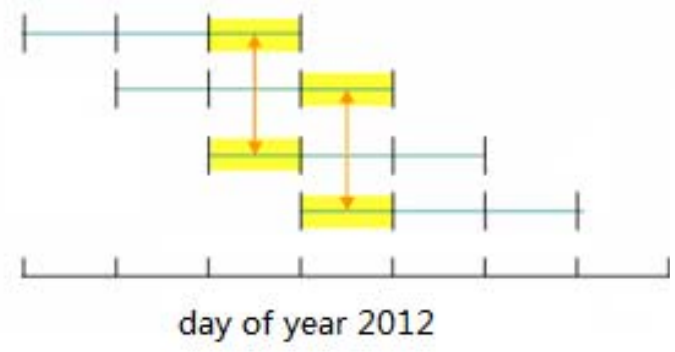
7th Meeting of the ICG, Beijing, China, 5-9, November 2012



Precise Orbit & Clock Determination

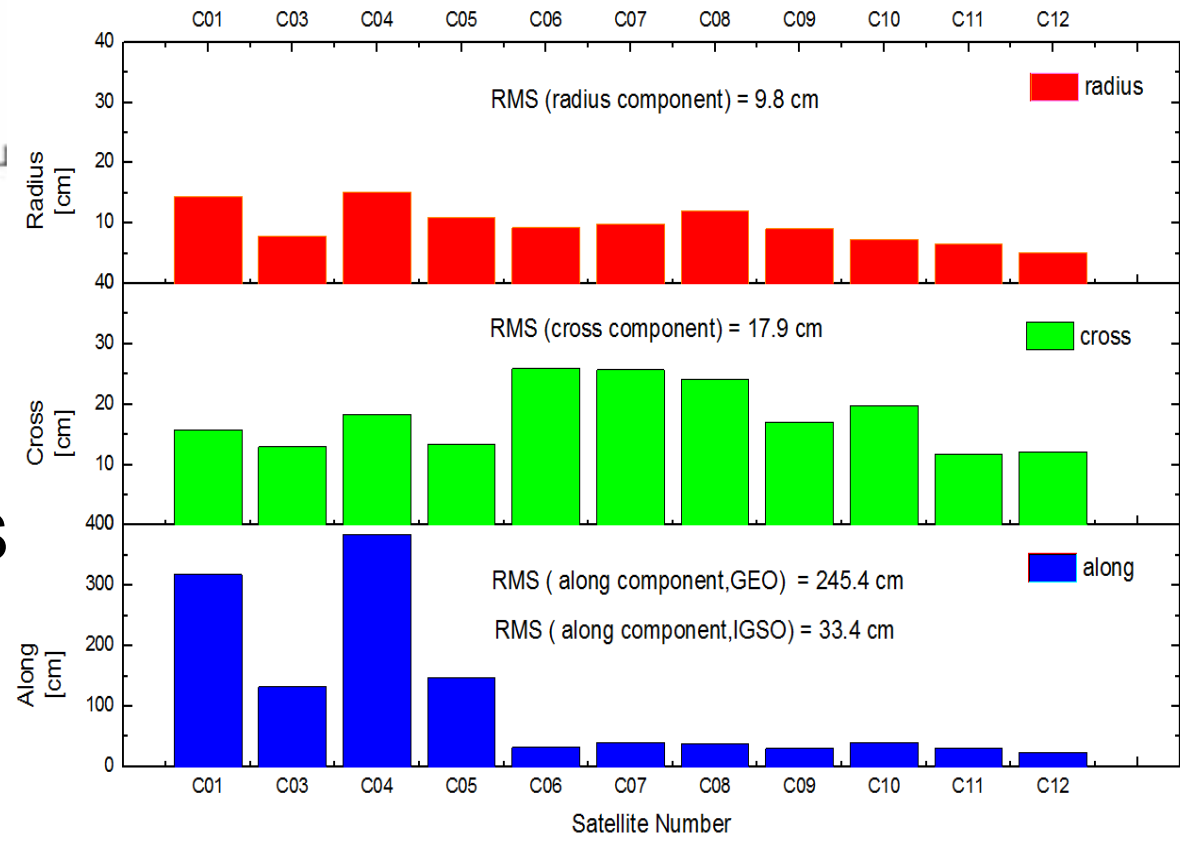


Overlap difference



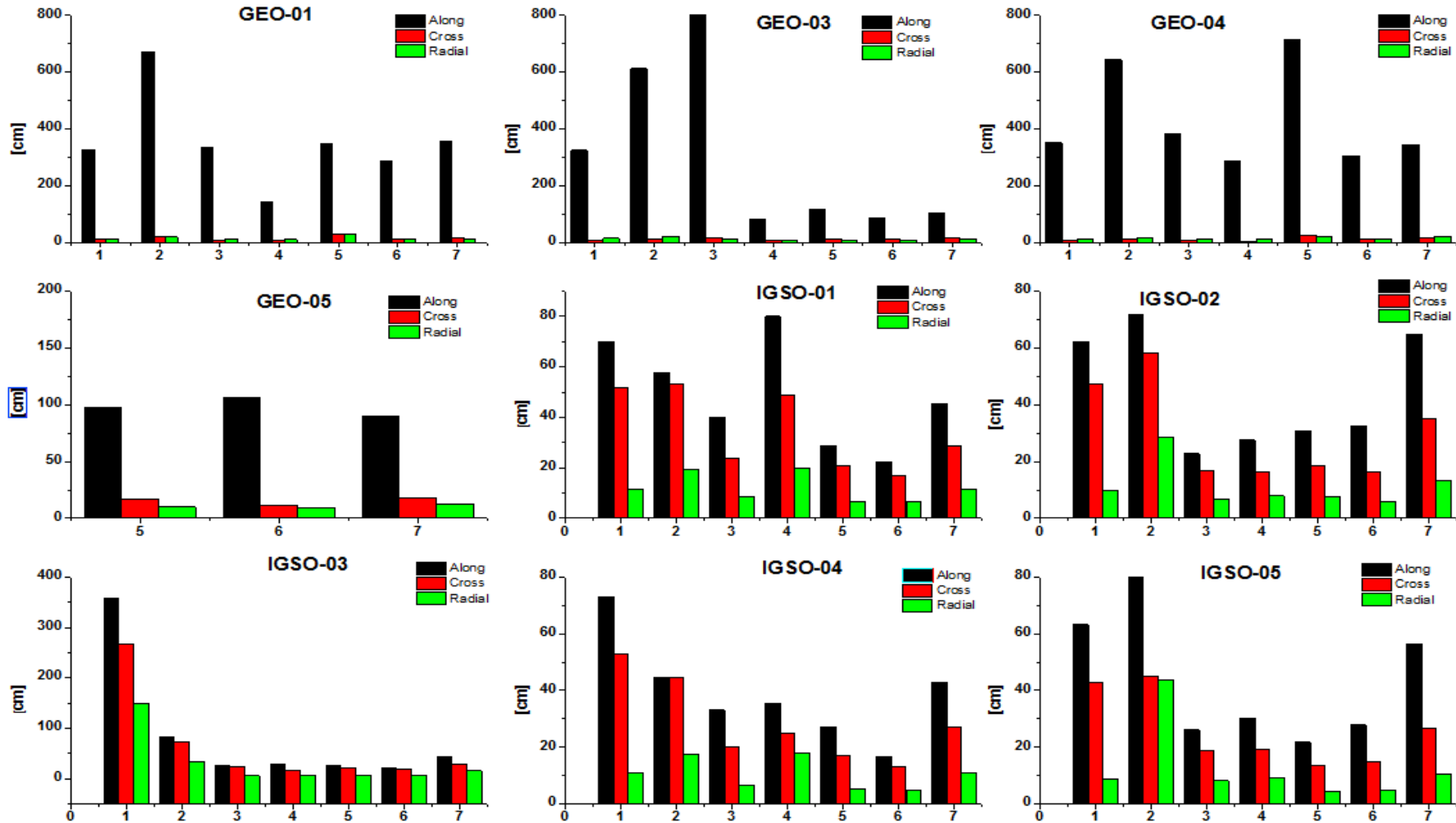
One month RMS
1-30, Sept. 2012

Results for 4GEO+5IGSO+2MEO





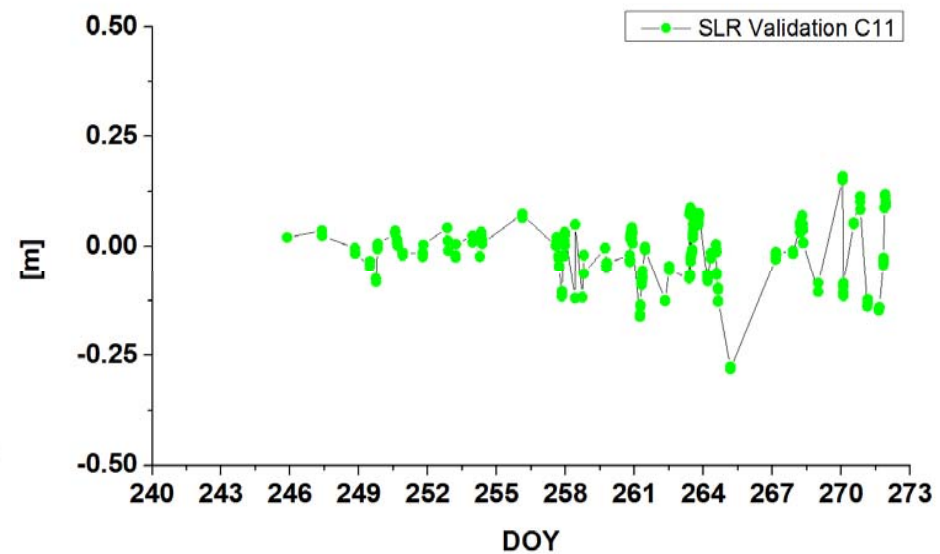
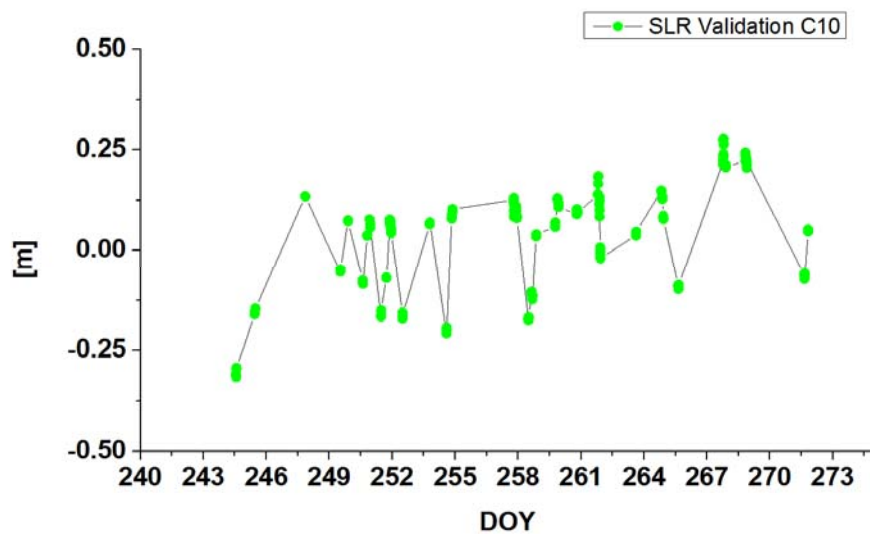
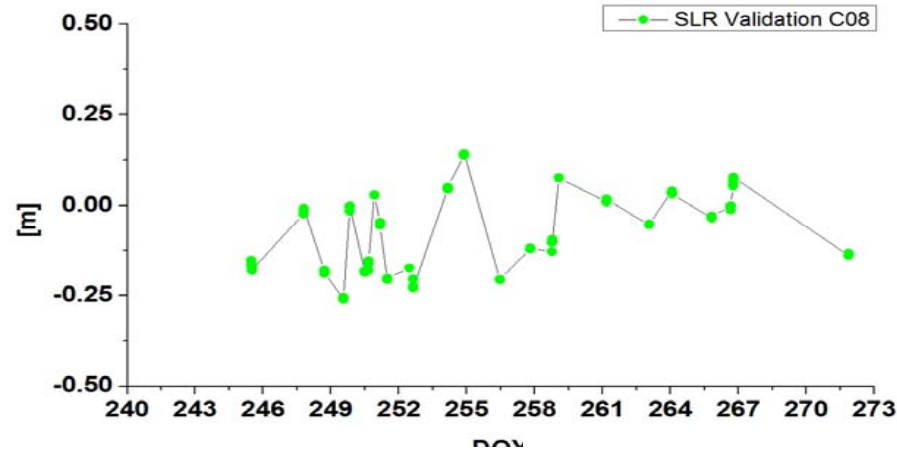
Precise Orbit&Clock Determination



7th Meeting of the ICG, Beijing, China, 5-9, November 2012

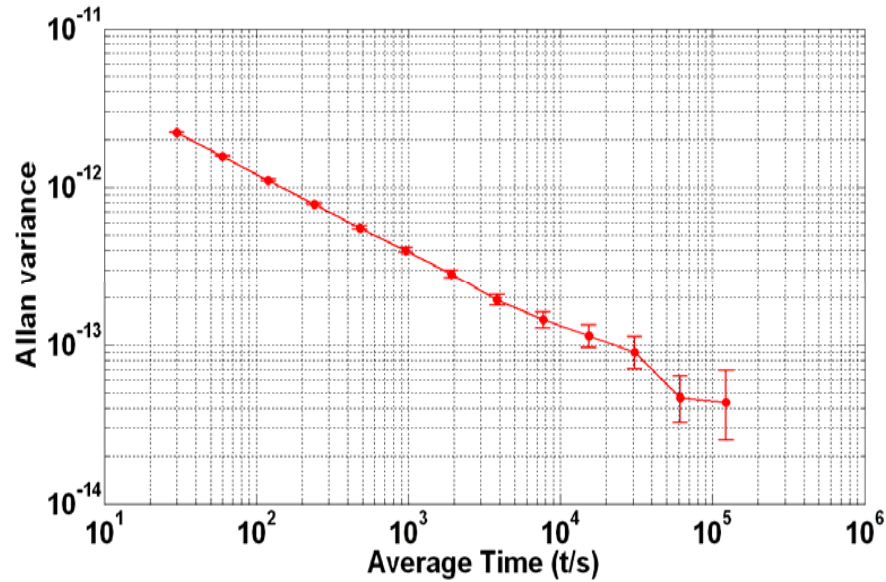


SLR Validation



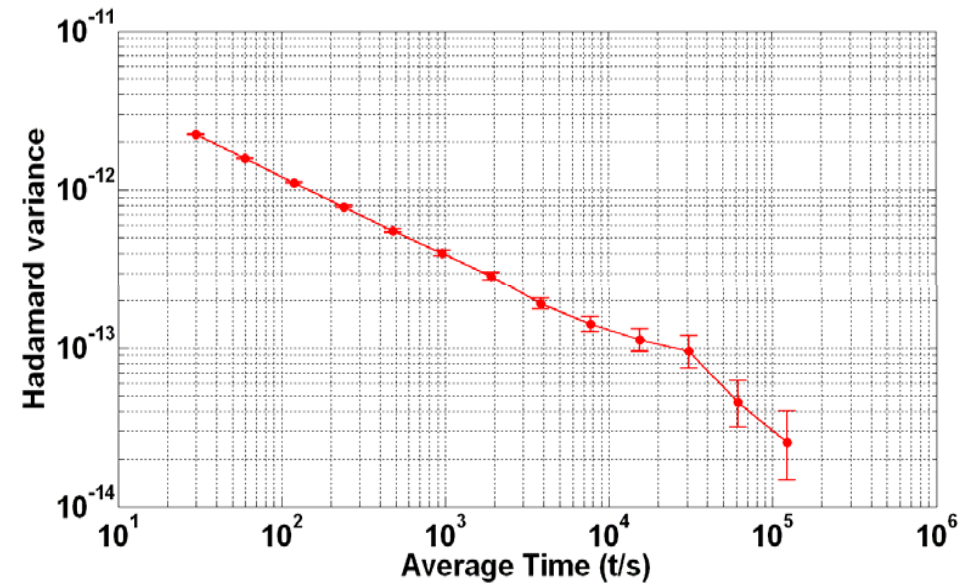


Precise Orbit&Clock Determination



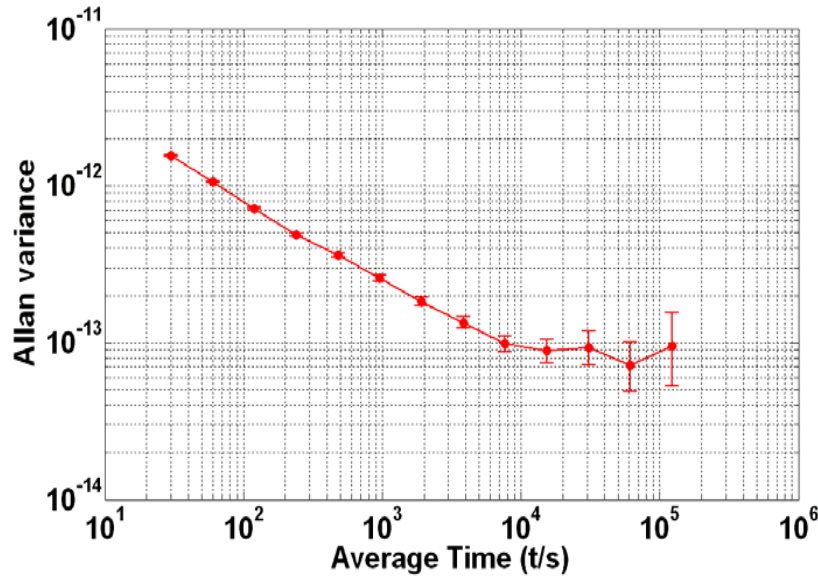
Allan Variance for GEO: CO3

Hadamard Variance for GEO: CO3



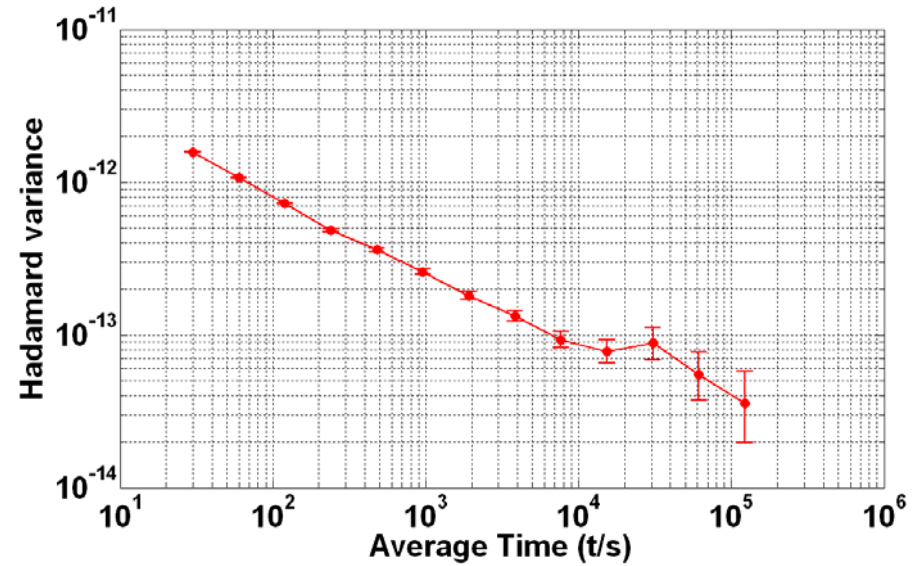


Precise Orbit&Clock Determination



Allan Variance for IGSO: CO8

Hadamard Variance for IGSO: CO8





Contents



1 Status of BeiDou

2 Precise Orbit&Clock Determination

3 Positioning Performance of BeiDou

4 Multi-GNSS Application

5 Summary

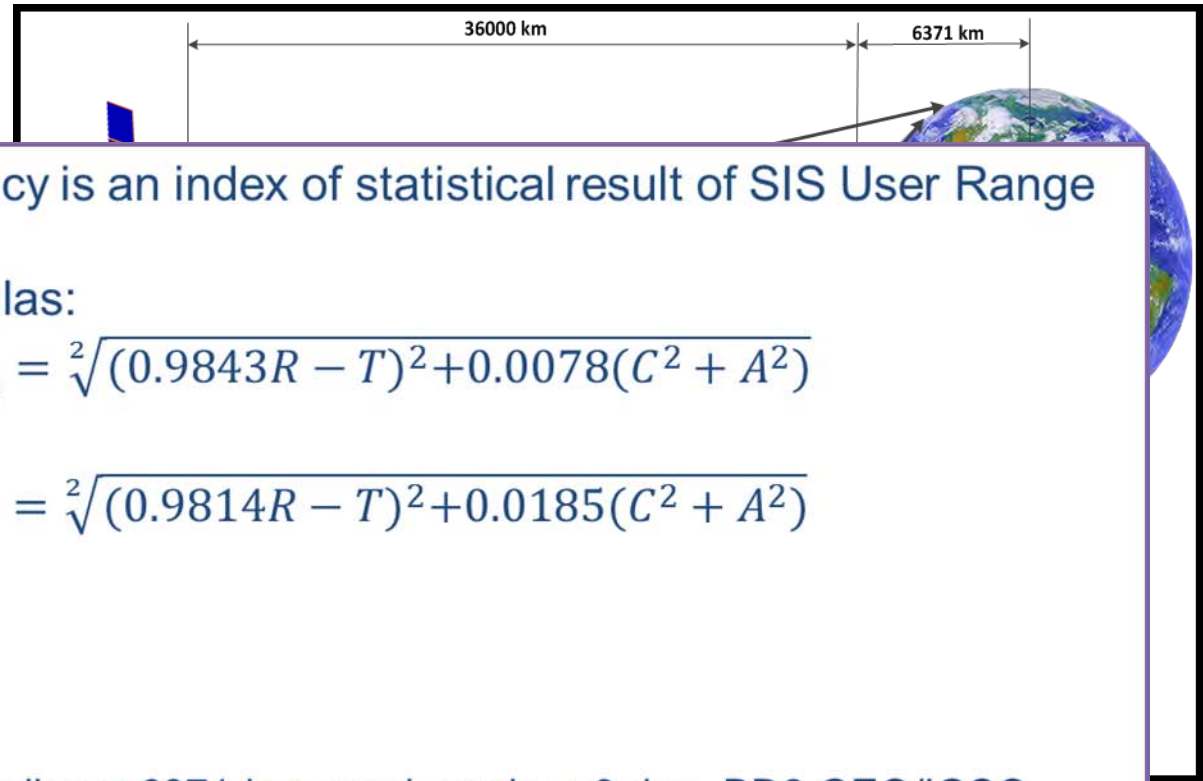
7th Meeting of the ICG, Beijing, China, 5-9, November 2012



Positioning Performance of BeiDou



SIS Accuracy



Signal in Space (SIS) Accuracy is an index of statistical result of SIS User Range Error (SIS URE)

Derived BD-2 SIS URE formulas:

$$URE_{BD2_{GEO/IGSO}}^2 = \sqrt{(0.9843R - T)^2 + 0.0078(C^2 + A^2)}$$

$$URE_{BD2_{MEO}}^2 = \sqrt{(0.9814R - T)^2 + 0.0185(C^2 + A^2)}$$

- R: radial error
- C: cross error
- A: along error
- T : clock error

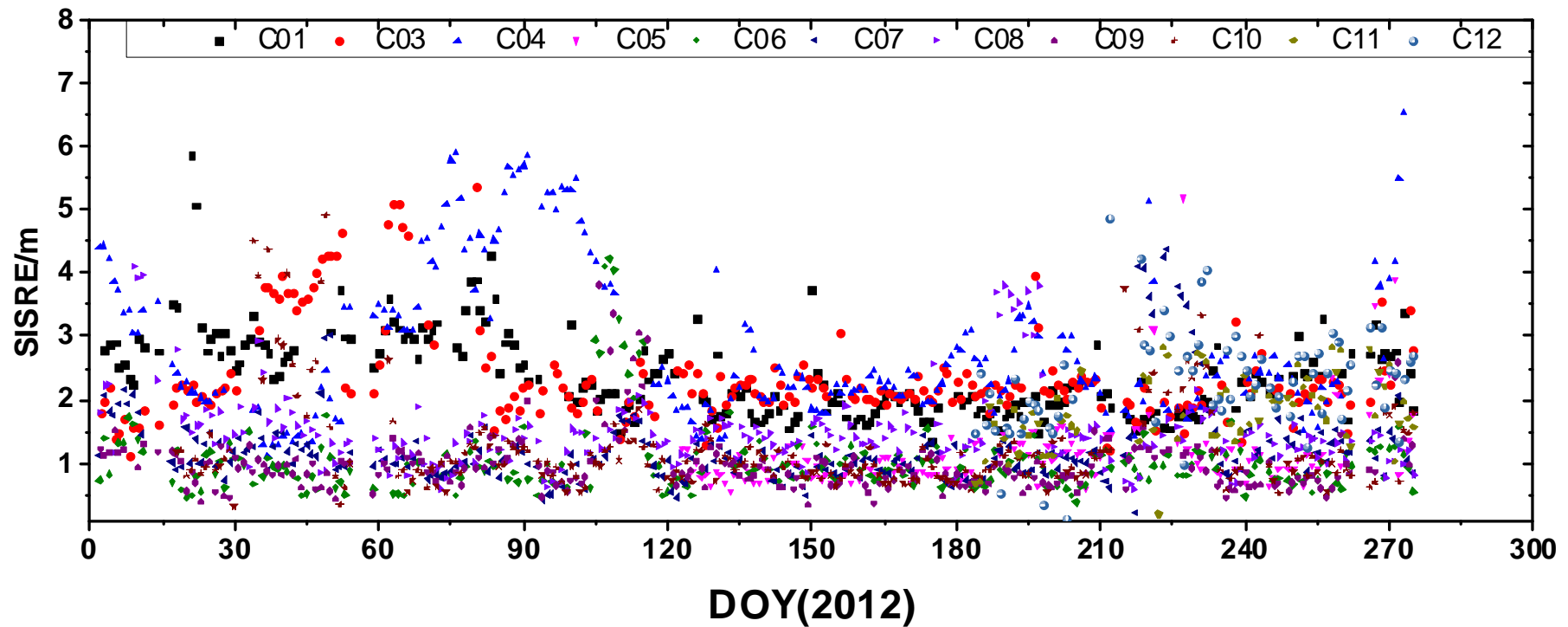
* assumed that Earth Radius = 6371 km, mask angle = 0 deg, BD2 GEO/IGSO Altitude = 36000 km , BD2 MEO Altitude = 21500 km



Positioning Performance of BeiDou



SISRE of broadcast ephemeris



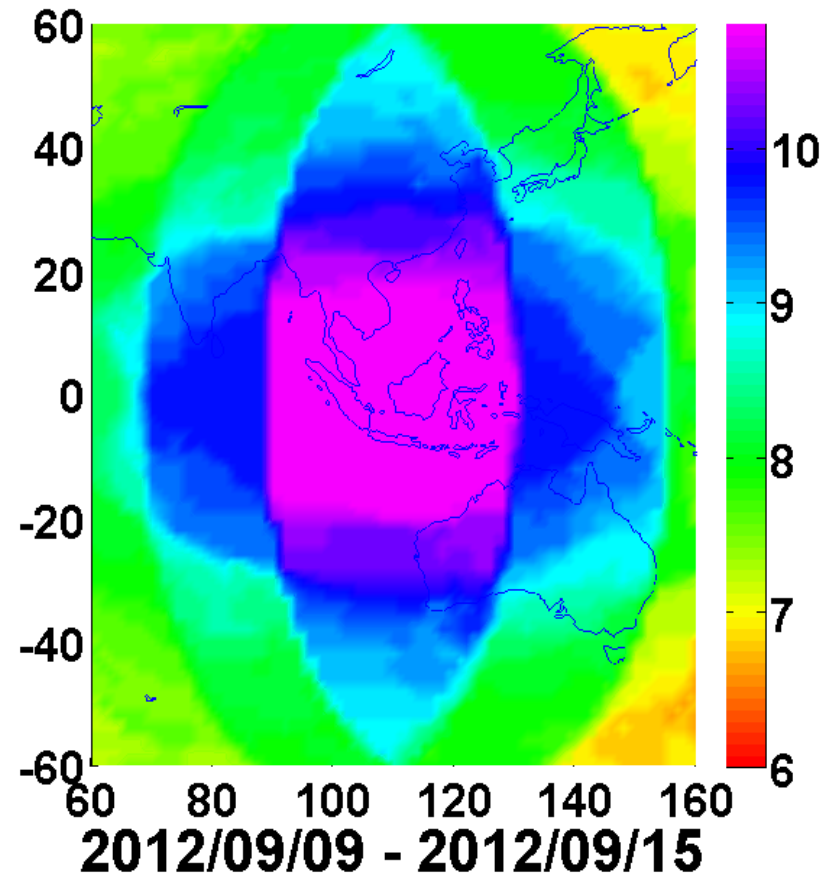
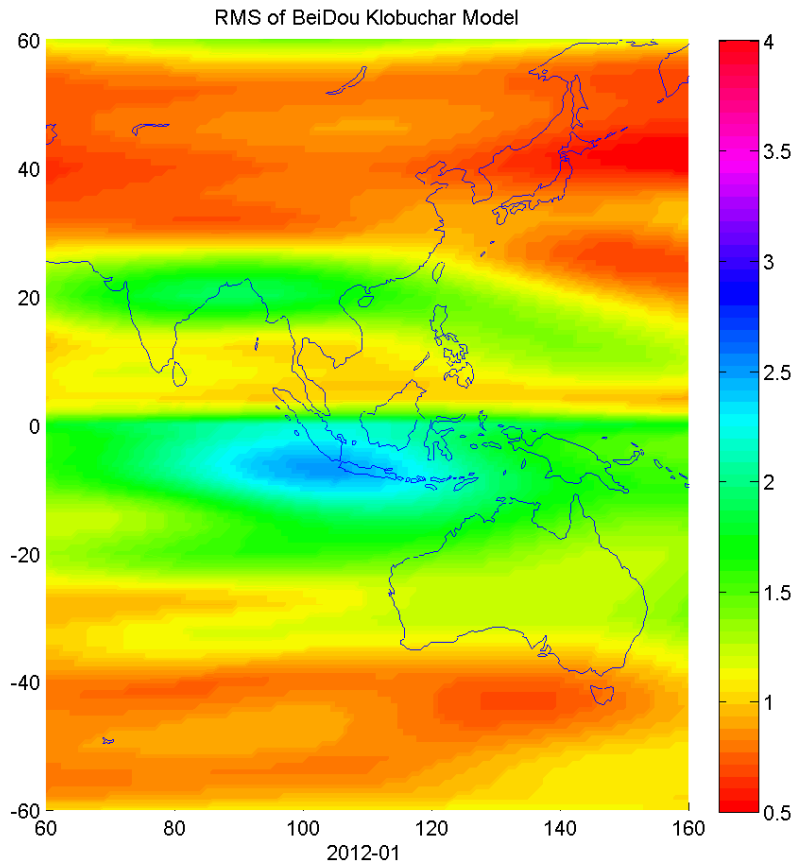
7th Meeting of the ICG, Beijing, China, 5-9, November 2012



Positioning Performance of BeiDou



- URE caused by Ionosphere parameters, and



Ionosphere difference between model of IGS and parameters from BeiDou

visible working satellites of BeiDou with 4+5+2 satellites

7th Meeting of the ICG, Beijing, China, 5-9, November 2012

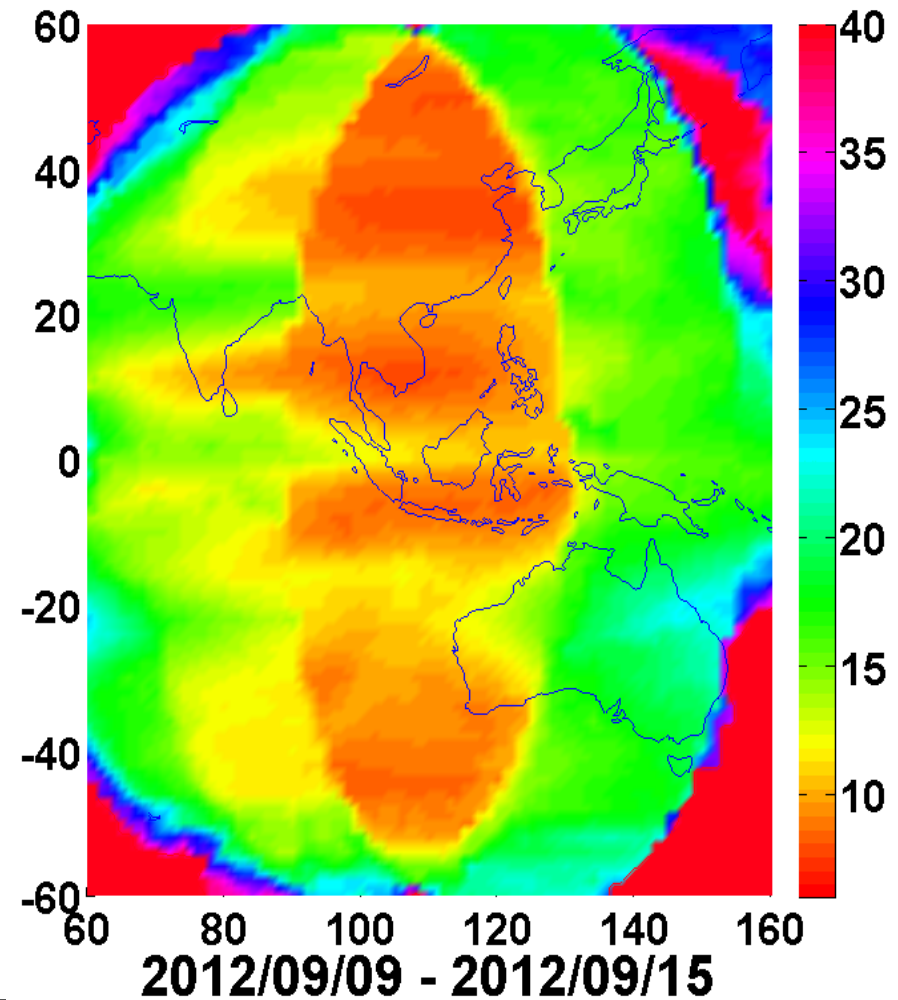
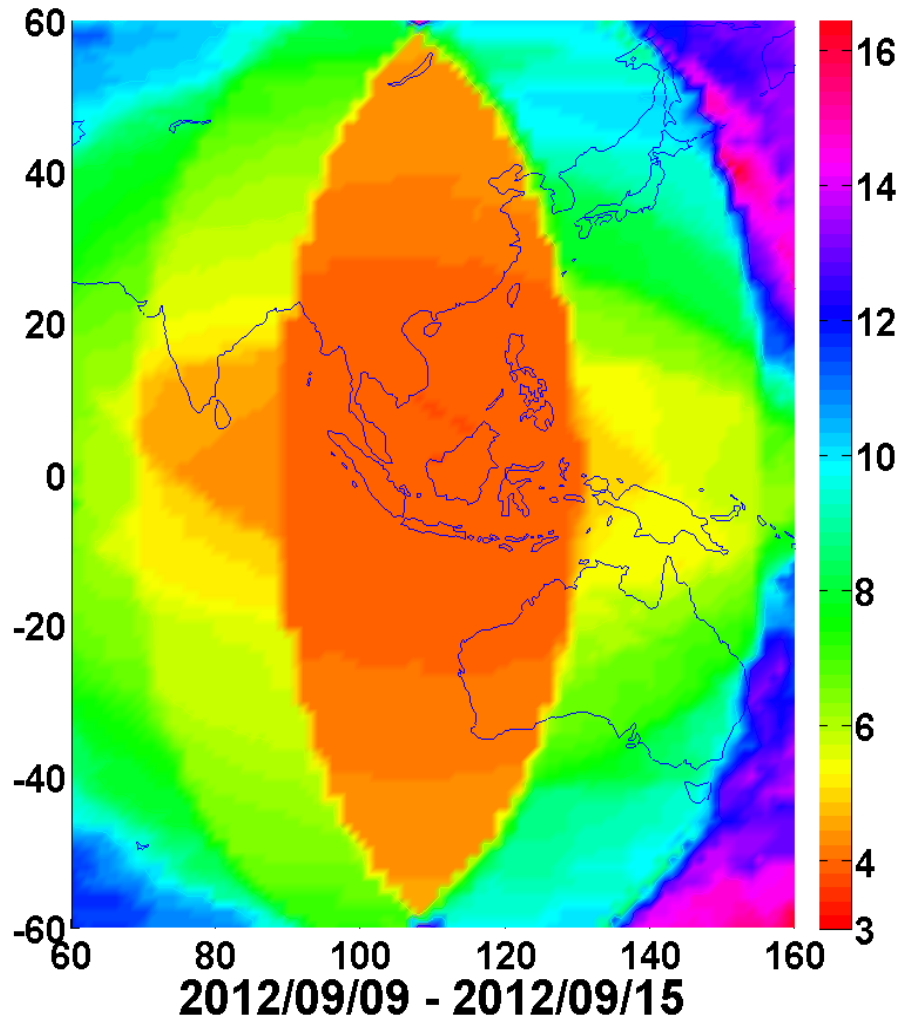


Positioning Performance of BeiDou



PDOP(95%)

Positioning Accuracy (95%)



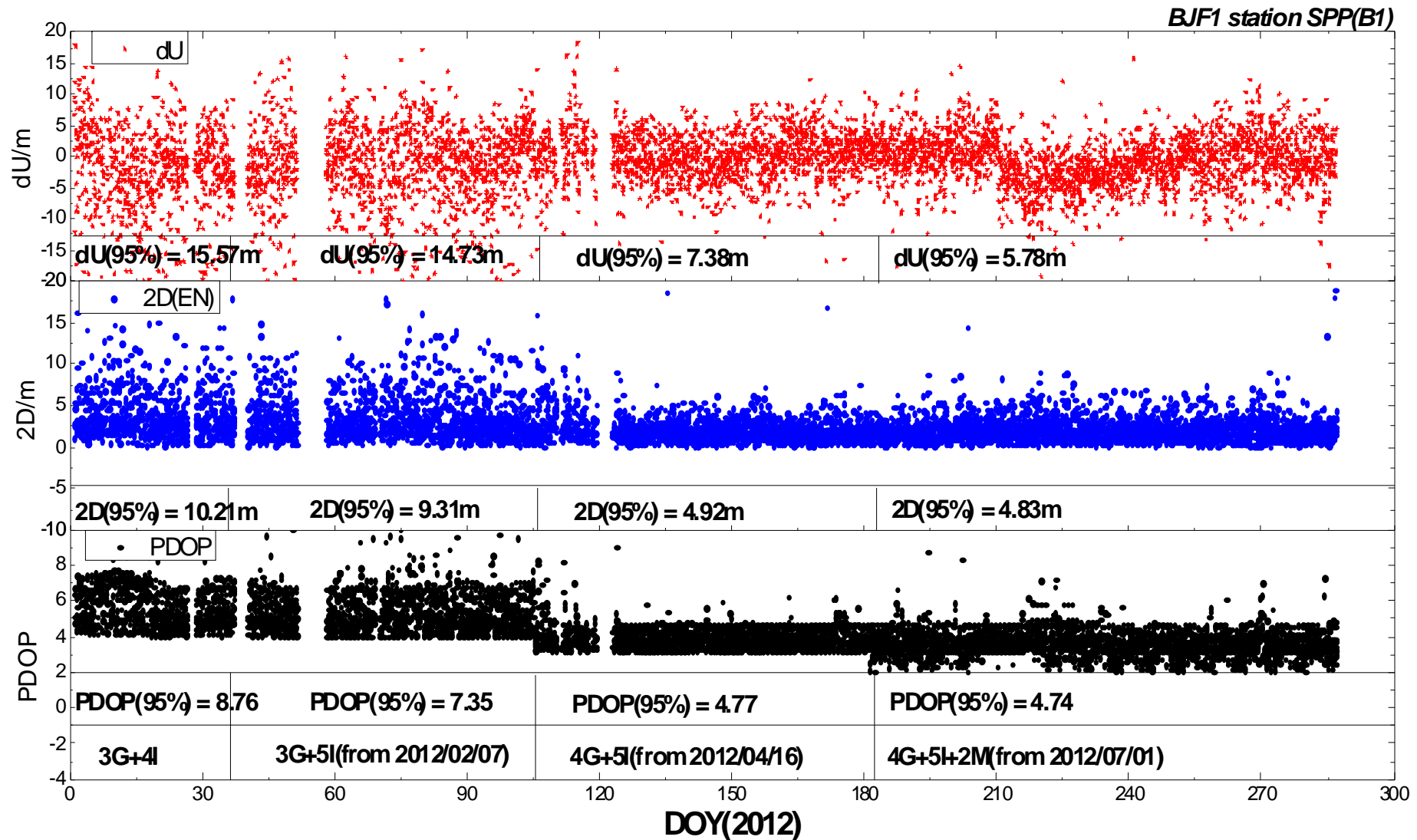
7th Meeting of the ICG, Beijing, China, 5-9, November 2012



Positioning Performance of BeiDou



- SPP results of Beijing Station (U:16->6m; EN:11->5m)

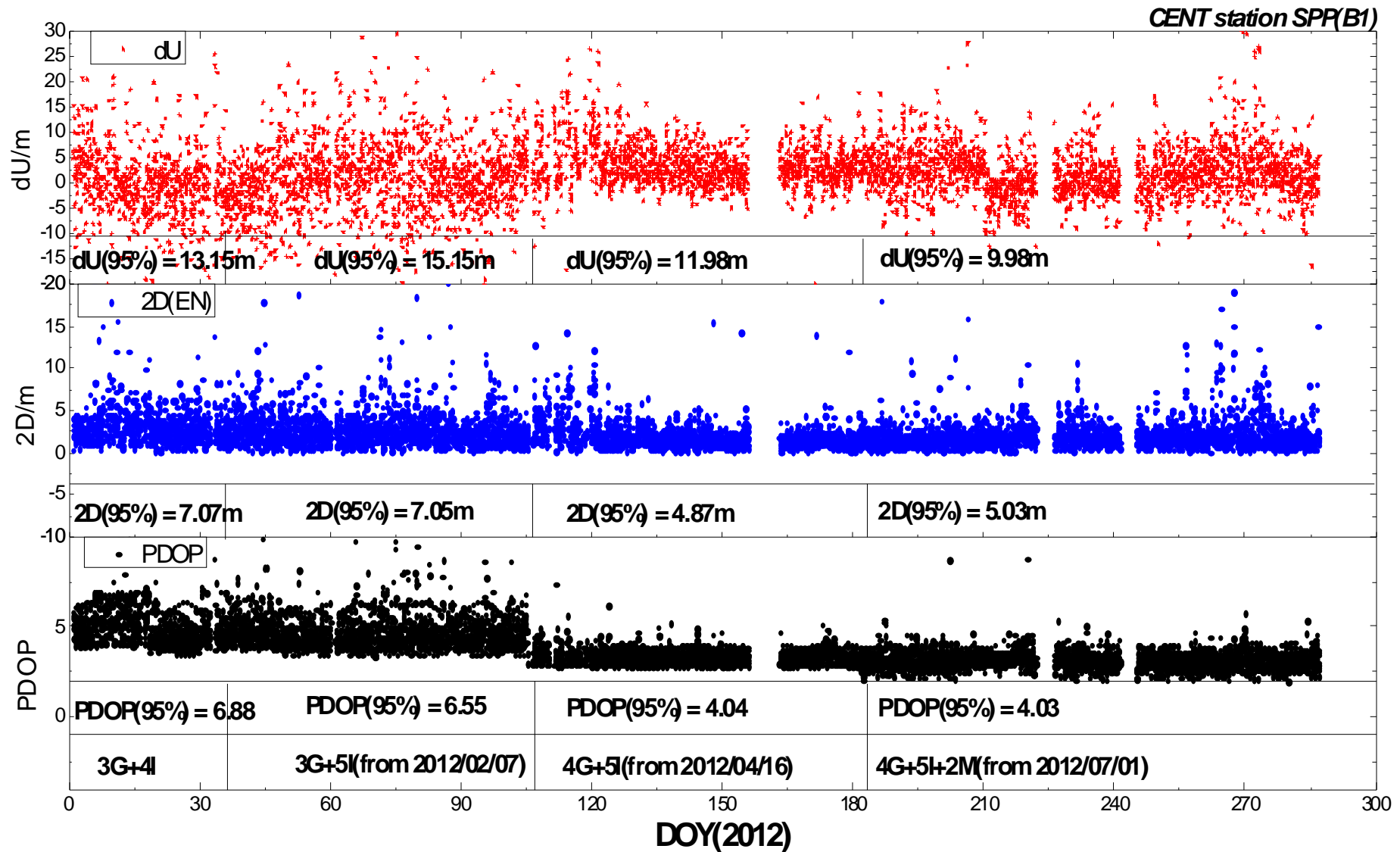




Positioning Performance of BeiDou



- SPP results of Wuhan Station (U:15- \rightarrow 10m; EN:8- \rightarrow 5m)

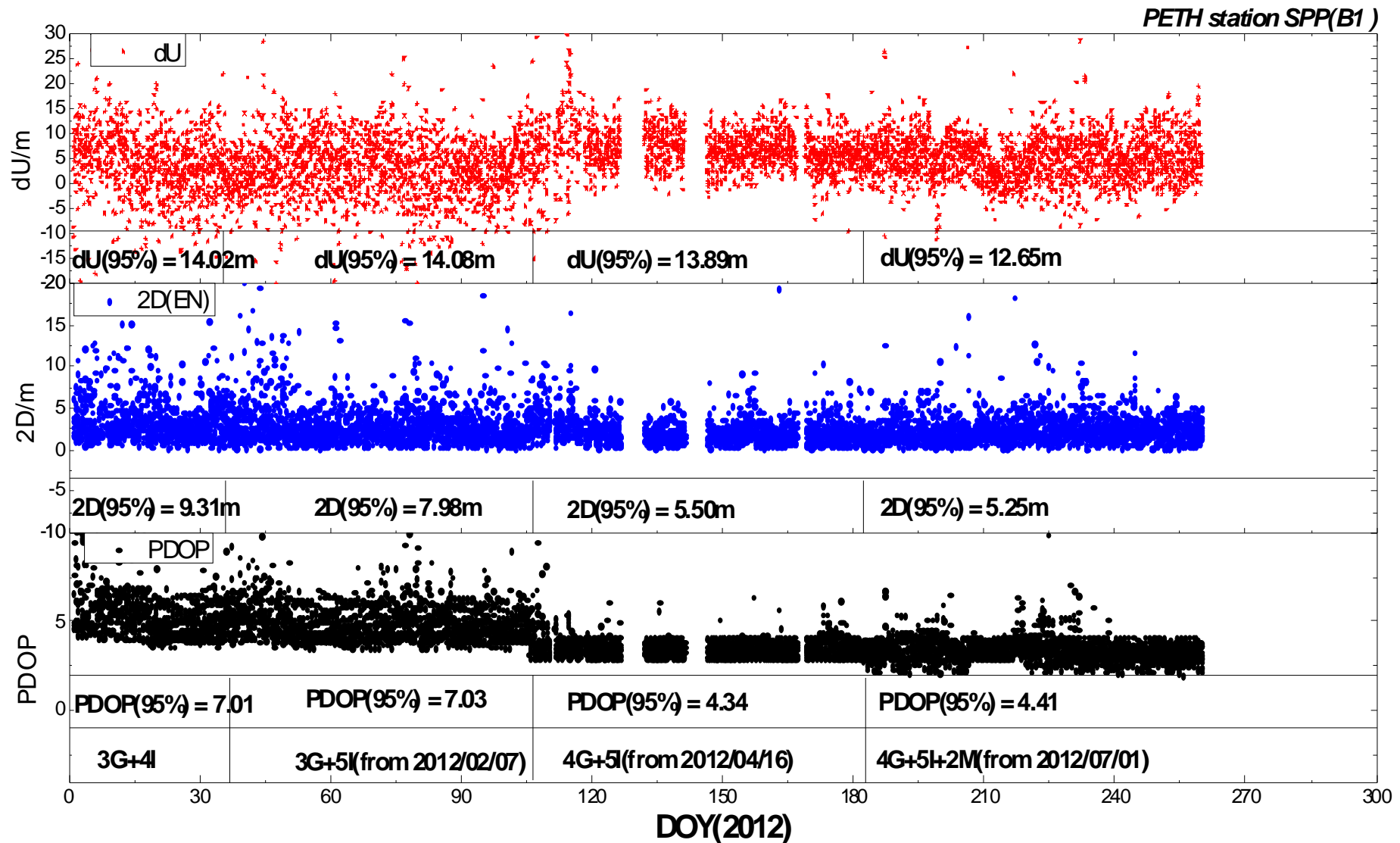




Positioning Performance of BeiDou



- SPP results of Perth Station (U:15- \rightarrow 10m; EN:8- \rightarrow 5m)





Contents



1 Status of BeiDou

2 Precise Orbit&Clock Determination

4 Positioning Performance of BeiDou

3 **Multi-GNSS Application**

5 Summary

7th Meeting of the ICG, Beijing, China, 5-9, November 2012

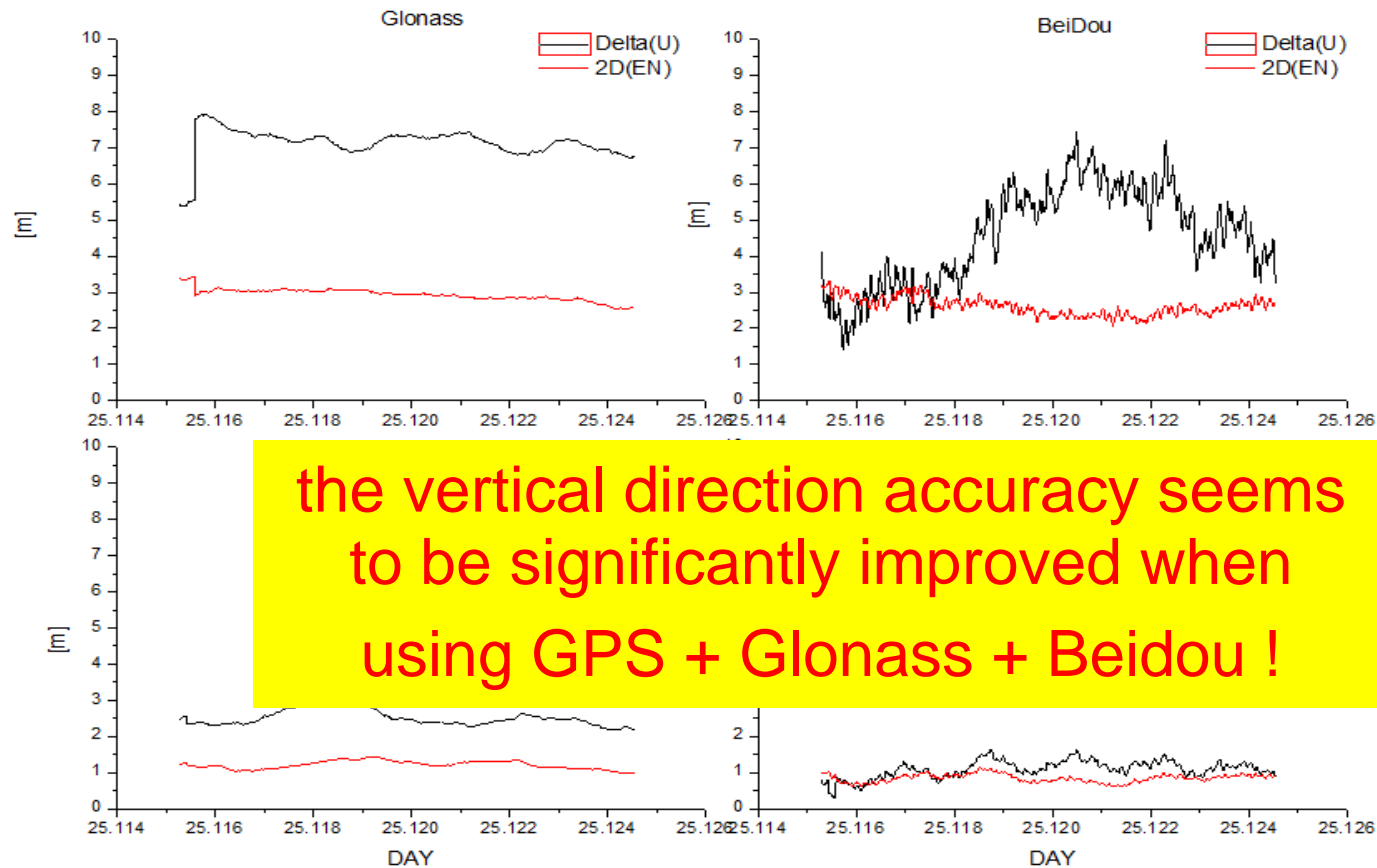


Multi-GNSS Application



- Navigation performance

Stand alone results (single frequency)



7th Meeting of the ICG, Beijing, China, 5-9, November 2012

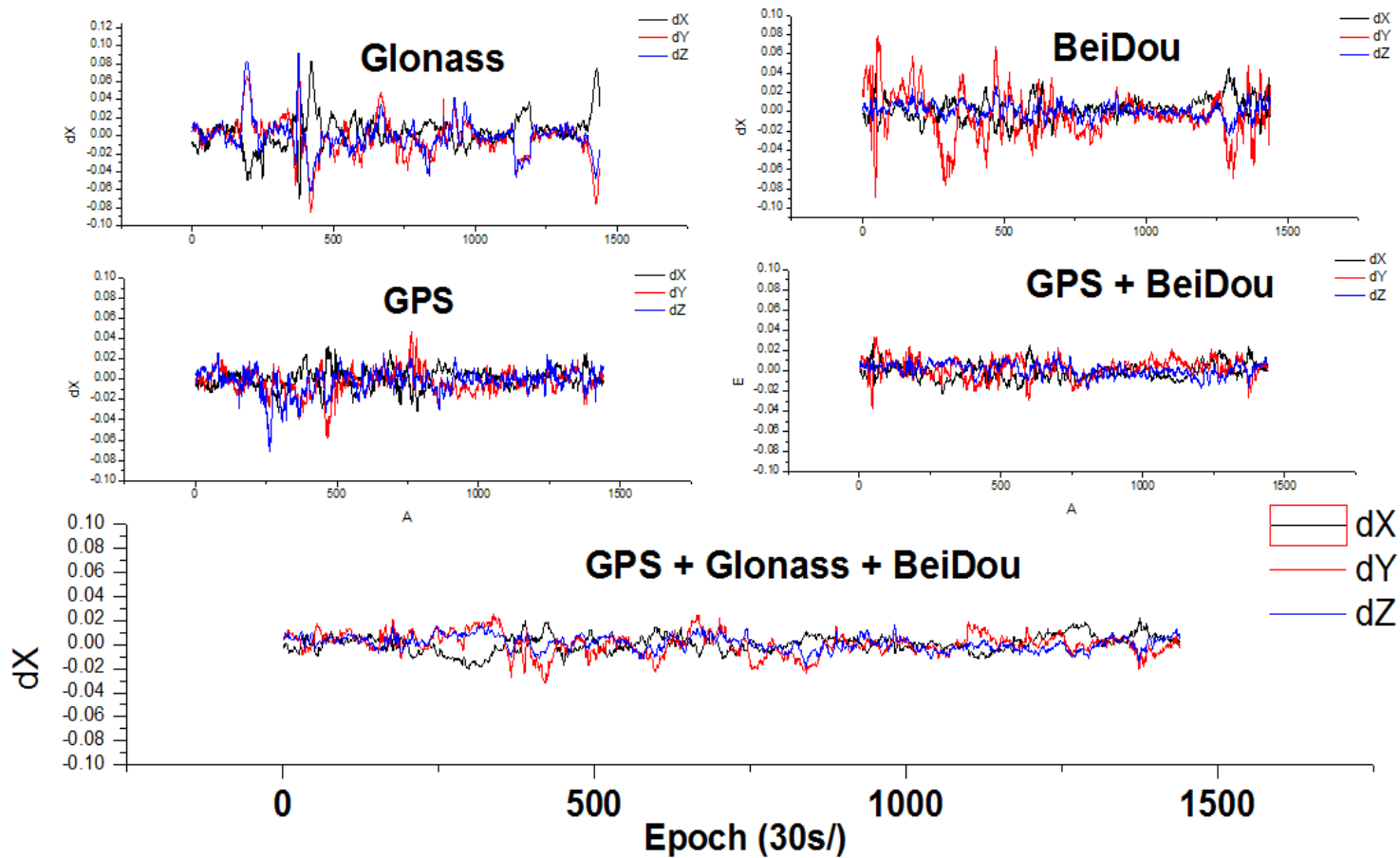


Multi-GNSS Application



- RTK performance

Multi-GNSS combination baseline kinematic resolutions



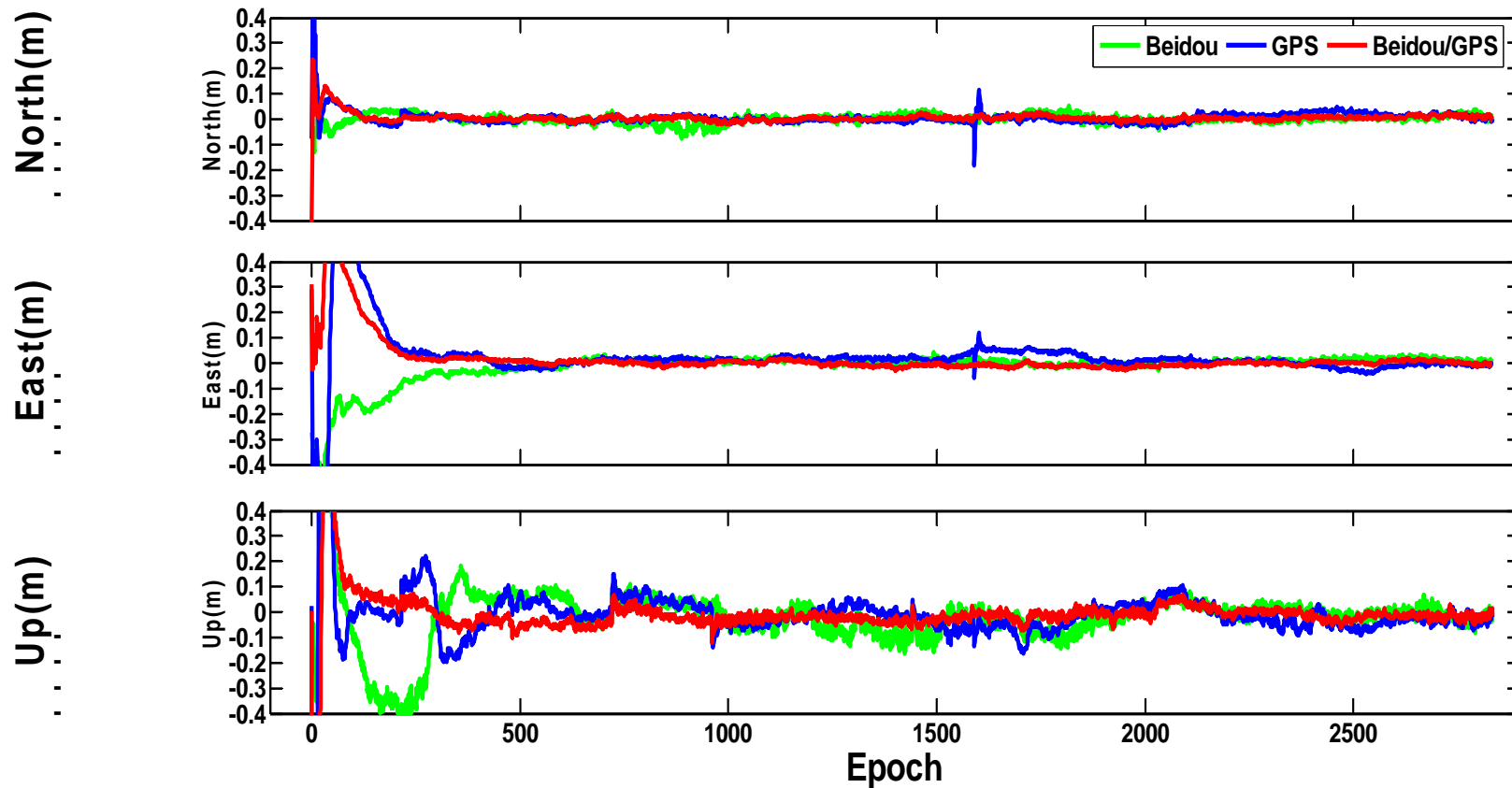
7th Meeting of the ICG, Beijing, China, 5-9, November 2012



Multi-GNSS Application



- PPP performance



7th Meeting of the ICG, Beijing, China, 5-9, November 2012



Summary



- POD of BeiDou, better than 10cm in radial direction
- For navigation users, 8-15 m(95%), Using BeiDou along, with 4GEO+5IGSO+2MEO constellation
- For navigation users, the Multi-GNSS combined results can be improved significantly compared with only one system used.
- Short baseline relative positioning, 1-3cm, using BeiDou only, and Kinematic relative positioning can be improved 20% by combining BeiDou and other GNSS, compared with other GNSS only
- PPP at cm lever using BeiDou precise O&C products, multi-GNSS PPP is more stable and with better accuracy.



7th Meeting of the International Committee on GNSS Beijing, China, 5-9, November 2012



Thanks for your attention!

