

Geo-wiki.org: How community remote sensing can help to improve global land cover

Steffen Fritz (1),
Ian McCallum (1), Christoph Perger (2), Schill Christian (3), Florian
Kraxner (1)
and Michael Obersteiner(1)

(1) International Institute for Applied Systems Analysis, (2)
Fachhochschule Wiener Neustadt, (3) FELIS,



Geo-Wiki



Navigation

- » [Home](#)
- » [Instructions](#)
- » [Related projects](#)
- » [Data sources](#)
- » [Contact us](#)
- » [Disclaimer](#)
- » [Register here!](#)

Try Geo-Wiki

Try as guest

Login

Login existing user

Email:

Password:

Remember me

[Forgot password?](#)

Help To Improve Global Land Cover!

The Geo-Wiki Project is a global network of volunteers who wish to help improve the quality of global land cover maps. Since large differences occur between existing global land cover maps, current ecosystem and land-use science lacks crucial accurate data (e.g. to determine the potential of additional agricultural land available to grow crops in Africa). Volunteers are asked to review hotspot maps of global land cover disagreement and determine, based on what they actually see in Google Earth and their local knowledge, if the land cover maps are correct or incorrect. Their input is recorded in a database, along with uploaded photos, to be used in the future for the creation of a new and improved global land cover map.

[View publication](#)



Transparency: 30



Show none

>> Land Cover Data

Show MODIS details

Show GlobCover details

Show GLC-2000 details

>> Disagreement

>> Validation

>> Additional Data

>> Geocoding

Quick Start

[Validate random points](#)

Infobutton: Press SHIFT + left mouse to get LandCover-Information



Data SIO, NOAA, U.S. Navy, NGA, GEBCO
Image © 2010 DigitalGlobe
© 2010 Cnes/Spot Image



Sichthöhe 15832

This site is operated by IIASA, FH Wiener Neustadt and FELIS.



GEOBENE



Transparency: 30

Show none

>> Land Cover Data

Show MODIS details

Show GlobCover details

Show GLC-2000 details

>> Disagreement

>> Validation

>> Additional Data

>> Geocoding

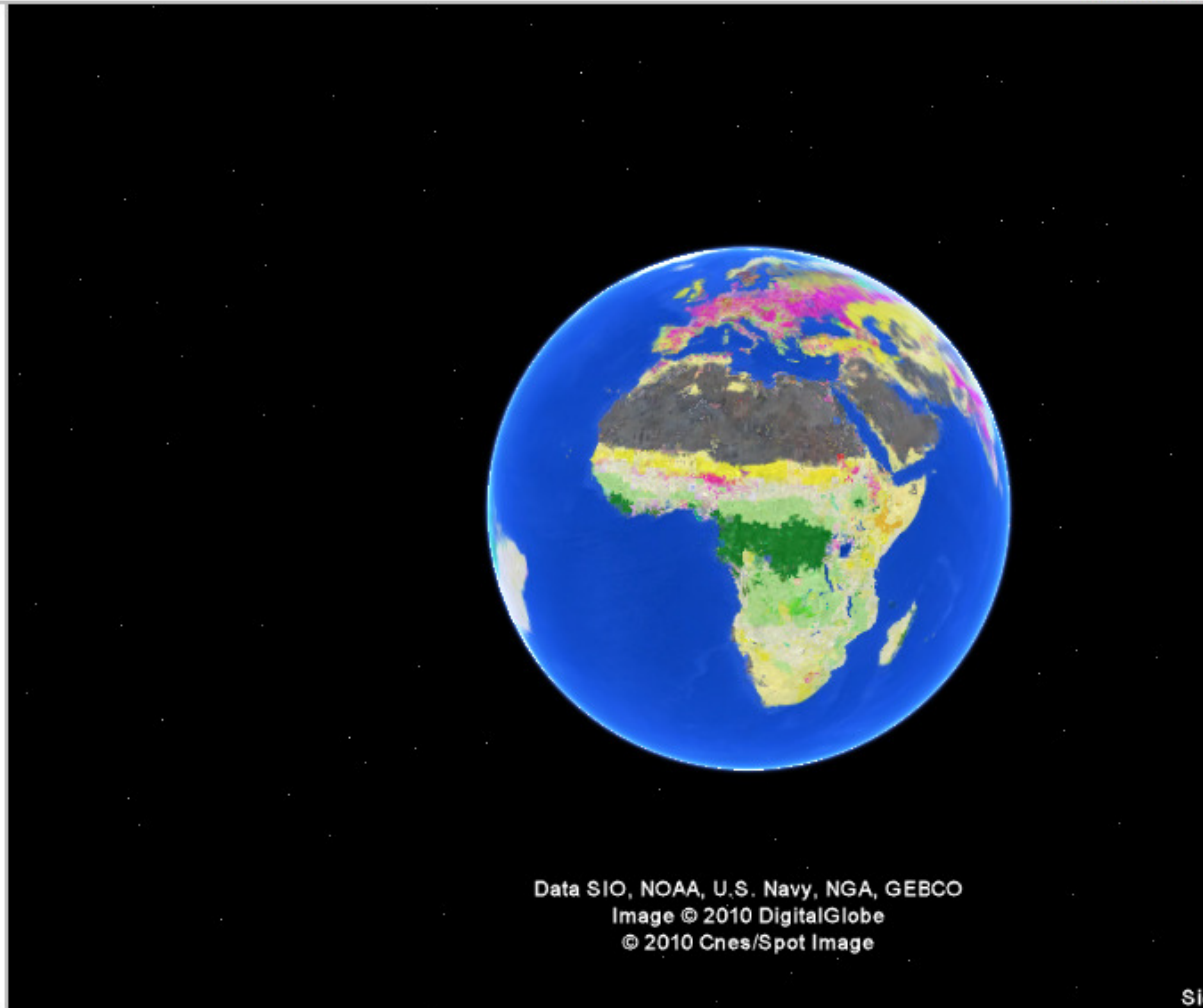
Quick Start

Validate random points

Infobutton: Press SHIFT + left mouse to get LandCover-Information

Legend: [show details](#)

- Evergreen needleleaf forests
 - Evergreen broadleaf forests
 - Deciduous needleleaf forests
 - Deciduous broadleaf forests
 - Mixed forests (of up to 4 above)
 - Closed shrublands
 - Open shrublands
 - Woody Savannahs
 - Non-Woody Savannahs
 - Grasslands
 - Permanent wetlands
 - Croplands
 - Urban and built-up areas
 - Cropland/natural vegetation
 - Snow and ice
 - Barren and sparsely vegetated
 - Water
- [< hide legend](#)



This site is operated by IIASA, FH Wiener Neustadt and FELIS.



Transparency: 30



Show none

[>> Land Cover Data](#)

Show MODIS details

Show GlobCover details

Show GLC-2000 details

[>> Disagreement](#)

[>> Validation](#)

[>> Additional Data](#)

[>> Geocoding](#)

[Quick Start](#)

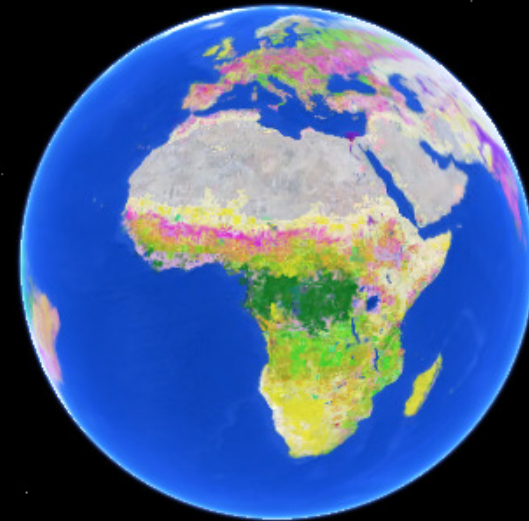
[Validate random points](#)

Infobutton: Press SHIFT + left mouse to get LandCover-Information

Legend: [show details](#)

- Post-flooding or Irrigated croplands
- Rainfed croplands
- Mosaic Cropland/grass or shrub or forest
- Mosaic grass or shrub or forest/Cropland
- Closed-open broadleaved evergreen/semi-deciduous forest
- Closed broadleaved deciduous forest
- Open broadleaved deciduous forest
- Closed needleleaved evergreen forest
- Open needl. decid. or everg. forest
- Closed-open mixed broadleaved-needleleaved forest
- Mosaic Forest or shrub/Grassland
- Mosaic Grassland/Forest or shrub
- Closed to open shrubland
- Closed to open grassland
- Sparse vegetation
- Closed-open broadleaved forest regularly flooded
- Closed broadleaved forest permanent flooded
- Closed to open vegetation regularly flooded
- Artificial areas
- Bare areas
- Water bodies
- Permanent snow and ice

[< hide legend](#)



Data SIO, NOAA, U.S. Navy, NGA, GEBCO
 Image © 2010 DigitalGlobe
 © 2010 Cnes/Spot Image

Sicht

This site is operated by IIASA, FH Wiener Neustadt and FELIS.



Transparency: 0



Show none

>> Land Cover Data

Show MODIS details

Show GlobCover details

Show GLC-2000 details

>> Disagreement

Show Combined Disagreement Map

Cropland Disagreement Maps:

Show GlobCover - GLC-2000

Show GlobCover - MODIS

Show MODIS - GLC-2000

Forest Disagreement Maps:

Show GlobCover - GLC-2000

Show GlobCover - MODIS

Show MODIS - GLC-2000

Ramankutty maps:

Show Ramankutty pasture

Show Ramankutty cropland

IFPR maps:

Show IFPR cropland

>> Validation

>> Additional Data

>> Geocoding

Quick Start

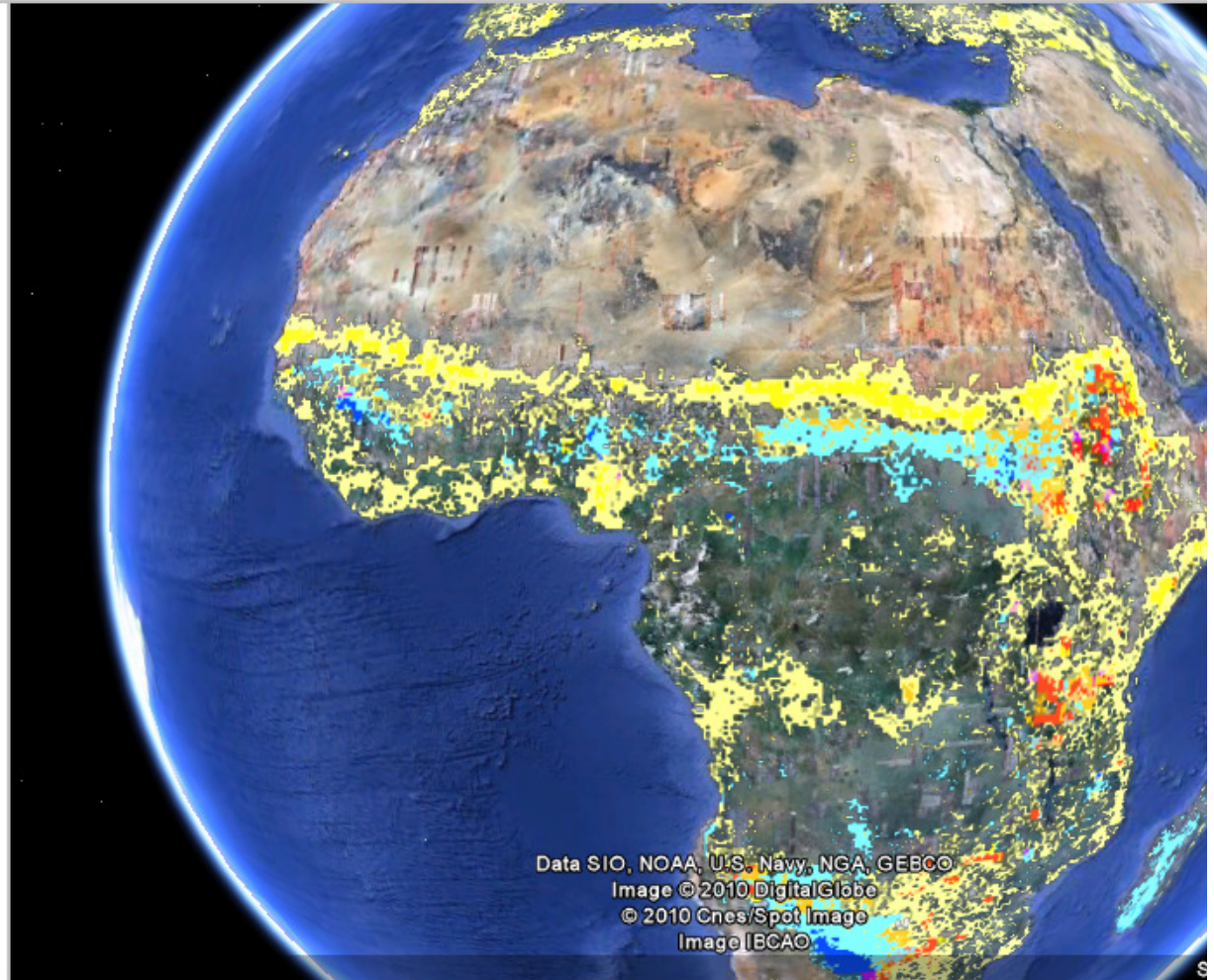
[Validate random points](#)

Infobutton: Press SHIFT + left mouse to get LandCover-Information

Legend:

- Cropland disagreement
- High cropland disagreement
- Forest disagreement
- High forest disagreement
- Forest and cropland disagreement
- Forest and high cropland disagreement
- High forest and cropland disagreement
- High forest and high cropland disagreement

< [hide legend](#)



Data SIO, NOAA, U.S. Navy, NGA, GEBCO
 Image © 2010 DigitalGlobe
 © 2010 Cnes/Spot Image
 Image IBCAO

This site is operated by IIASA, FH Wiener Neustadt and FELIS.



Transparency: 30

Show none

>> Land Cover Data

>> Disagreement

>> Validation

Already Validated Areas:

Show validated Areas

Load Confluence Points

Load Country Statistics remove

Load uploaded Pictures

Load Geo-Wiki Members

>> Additional Data

>> Geocoding

Quick Start

Validate random points

infobutton: Press SHIFT + left mouse to get LandCover-Information

Status: Please zoom in to start validating



Status: Please zoom in to start validating

Transparency: 30

Show none

>> Land Cover Data

>> Disagreement

>> Validation

Already Validated Areas:

Show validated Areas

Load Confluence Points

Load Country Statistics remove

Load uploaded Pictures

Load Geo-Wiki Members

>> Additional Data

>> Geocoding

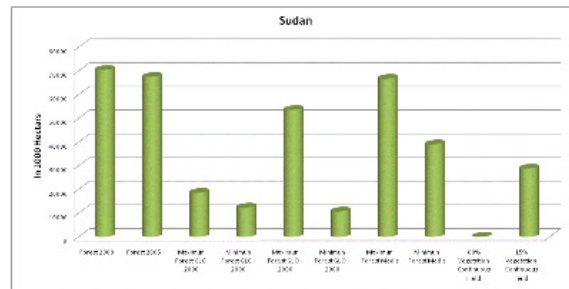
Quick Start

Validate random points

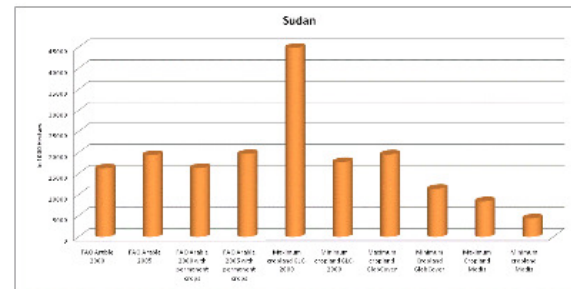
Infobutton: Press SHIFT + left mouse to get LandCover-Information

Country Statistics Sudan

Forest Statistics



Cropland Land Statistics



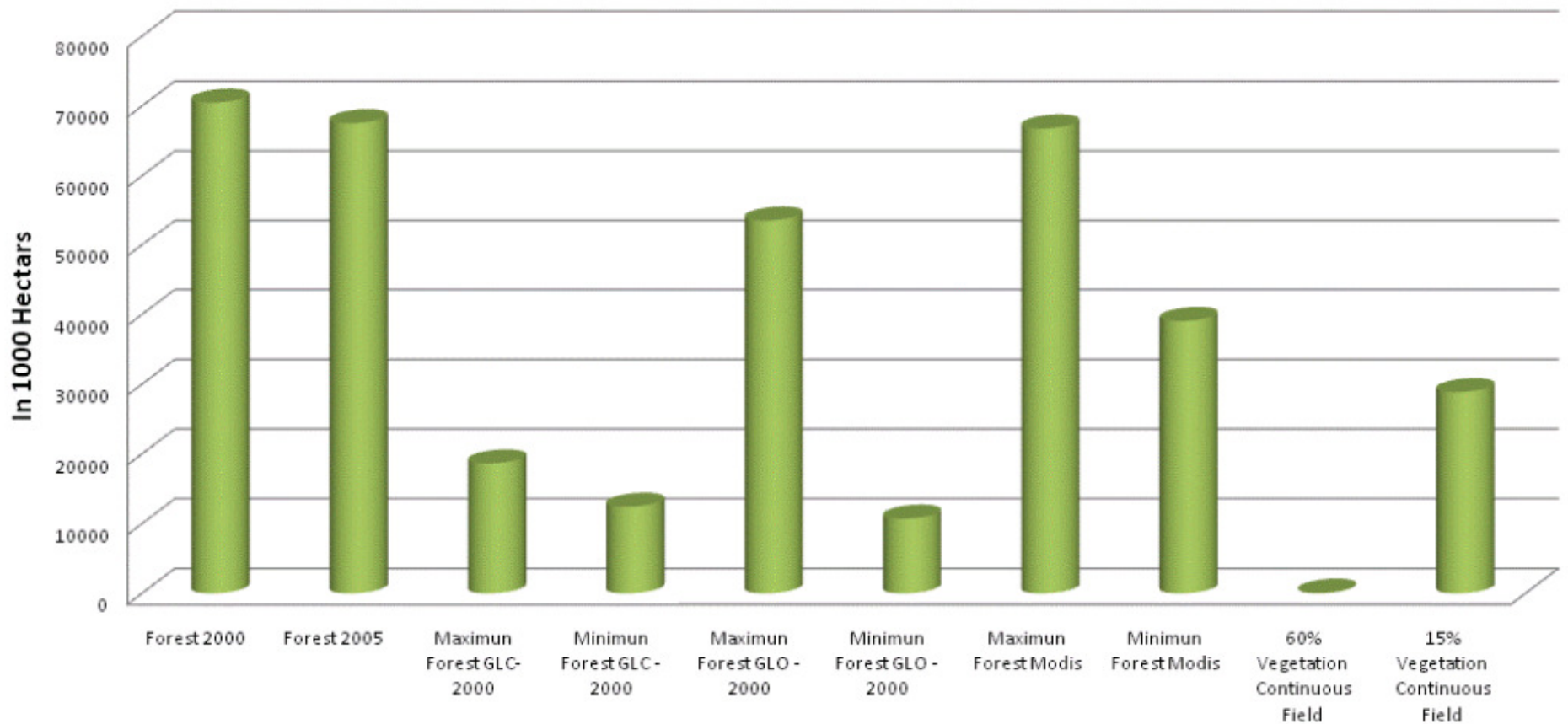
Click to enlarge image

Continent: Africa

Region: Northern Africa



Sudan



Transparency: 28

Show none

>> Land Cover Data

Show MODIS details

Show GlobCover details

Show GLC-2000 details

>> Disagreement

Show Combined Disagreement Map

Cropland Disagreement Maps:

Show GlobCover - GLC-2000

Show GlobCover - MODIS

Show MODIS - GLC-2000

Forest Disagreement Maps:

Show GlobCover - GLC-2000

Show GlobCover - MODIS

Show MODIS - GLC-2000

Ramankutty maps:

Show Ramankutty pasture

Show Ramankutty cropland

IFPR maps:

Show IFPR cropland

>> Validation

>> Additional Data

Load Basedata

Load Panoramio

Load FRA2010 10km details

Load FRA2010 20km details

>> Geocoding

Quick Start

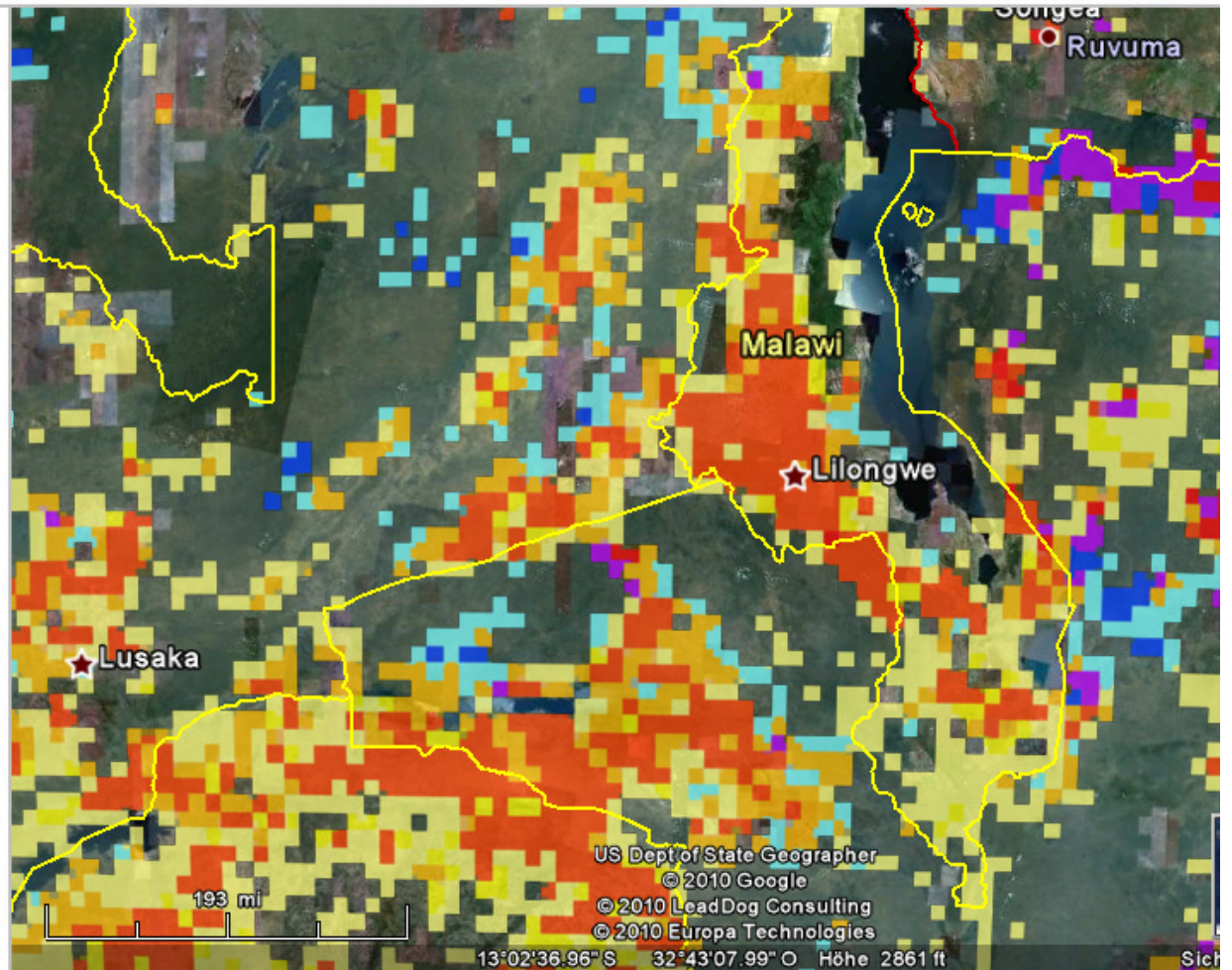
[Validate random points](#)

Infobutton: Press SHIFT + left mouse to get LandCover-Information

Legend:

- Cropland disagreement
- High cropland disagreement
- Forest disagreement
- High forest disagreement
- Forest and cropland disagreement
- Forest and high cropland disagreement
- High forest and cropland disagreement
- High forest and high cropland disagreement

< hide legend



This site is operated by IIASA, FH Wiener Neustadt and FELIS.



Transparency: 28

Show none

>> Land Cover Data

- Show MODIS details
- Show GlobCover details
- Show GLC-2000 details

>> Disagreement

>> Validation

Already Validated Areas:

Show validated Areas

Load Confluence Points

Load Country Statistics

Load uploaded Pictures remove

>> Additional Data

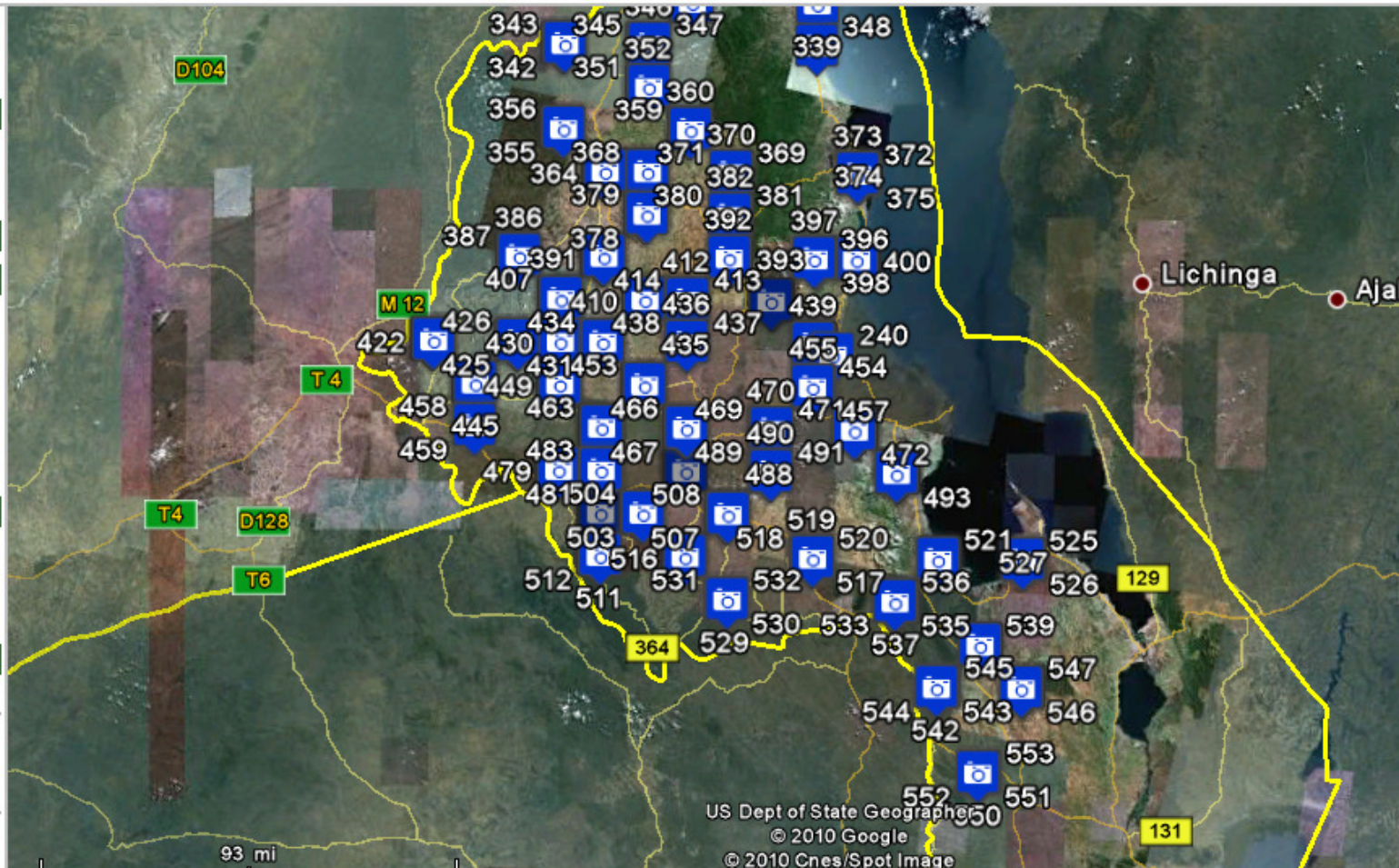
- Load Basedata
- Load Panoramic
- Load FRA2010 10km details
- Load FRA2010 20km details

>> Geocoding

Quick Start

Validate random points

Infobutton: Press SHIFT + left mouse to get LandCover-Information



Transparency: 28



Show none

>> Land Cover Data

- Show MODIS details
- Show GlobCover details
- Show GLC-2000 details

>> Disagreement

>> Validation

Already Validated Areas:

Show validated Areas

[Load Confluence Points](#)

[Load Country Statistics](#)

[Load uploaded Pictures](#)

>> Additional Data

- Load Basedata
- Load Panoramio
- Load FRA2010 10km details
- Load FRA2010 20km details

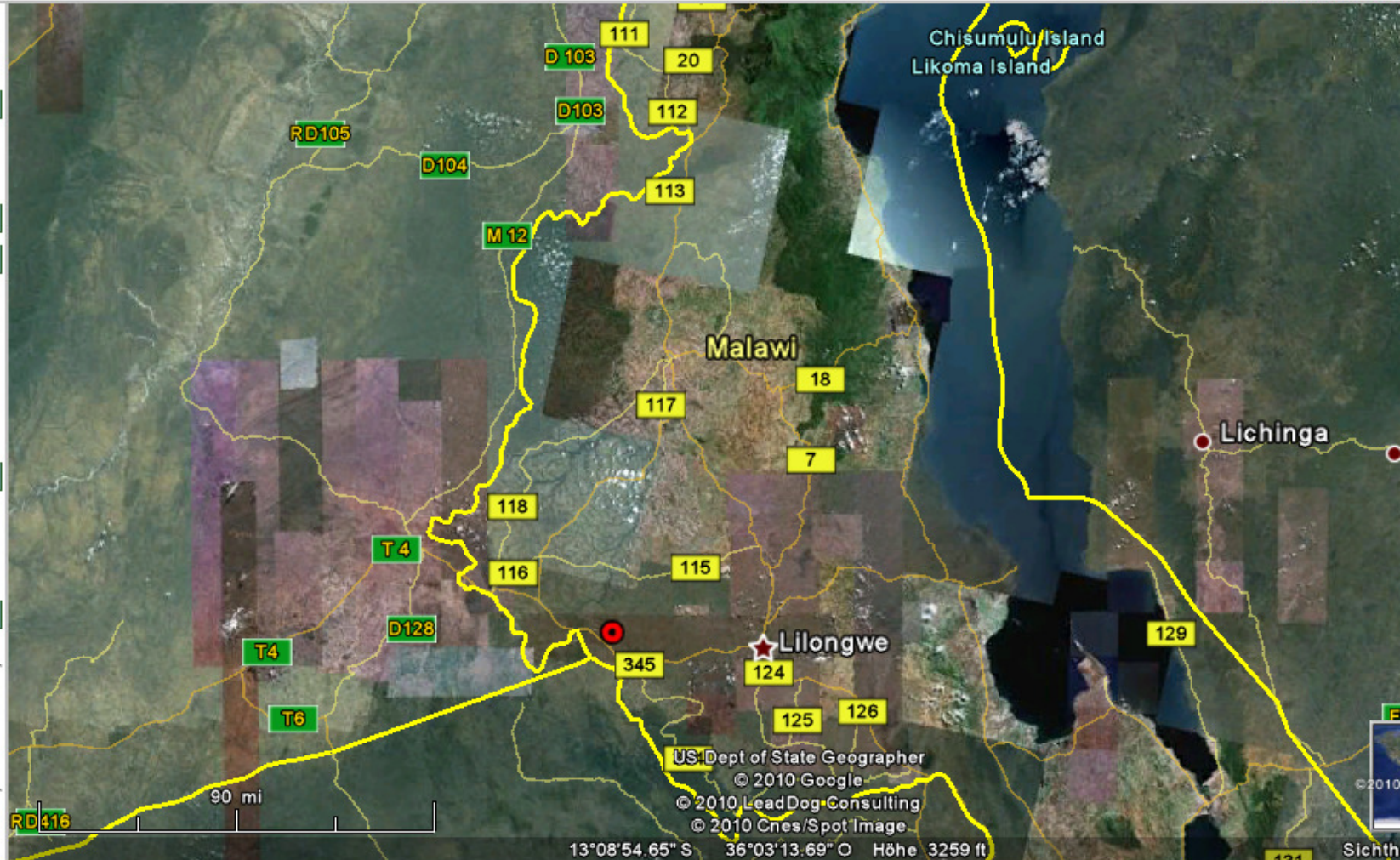
>> Geocoding

Quick Start

[Validate random points](#)

[Get Confluence Info](#)

Infobutton: Press SHIFT + left mouse to get LandCover-Information



This site is operated by IIASA, FH Wiener Neustadt and FELIS.

MODIS:	Non-Woody Savannahs
GlobCover:	Closed to open shrubland
GLC-2000:	Cultivated and managed areas



OK [Validate this point](#)

Geospatial Land Cover Validation

>> Land Cover Data

- Show MODIS details
- Show GlobCover details
- Show GLC-2000 details

>> Disagreement

>> Validation

Already Validated Areas:

- Show validated Areas

Load Confluence Points

Load Country Statistics

Load uploaded Pictures remove

>> Additional Data

- Load Basedata
- Load Panoramio
- Load FRA2010 10km details
- Load FRA2010 20km details

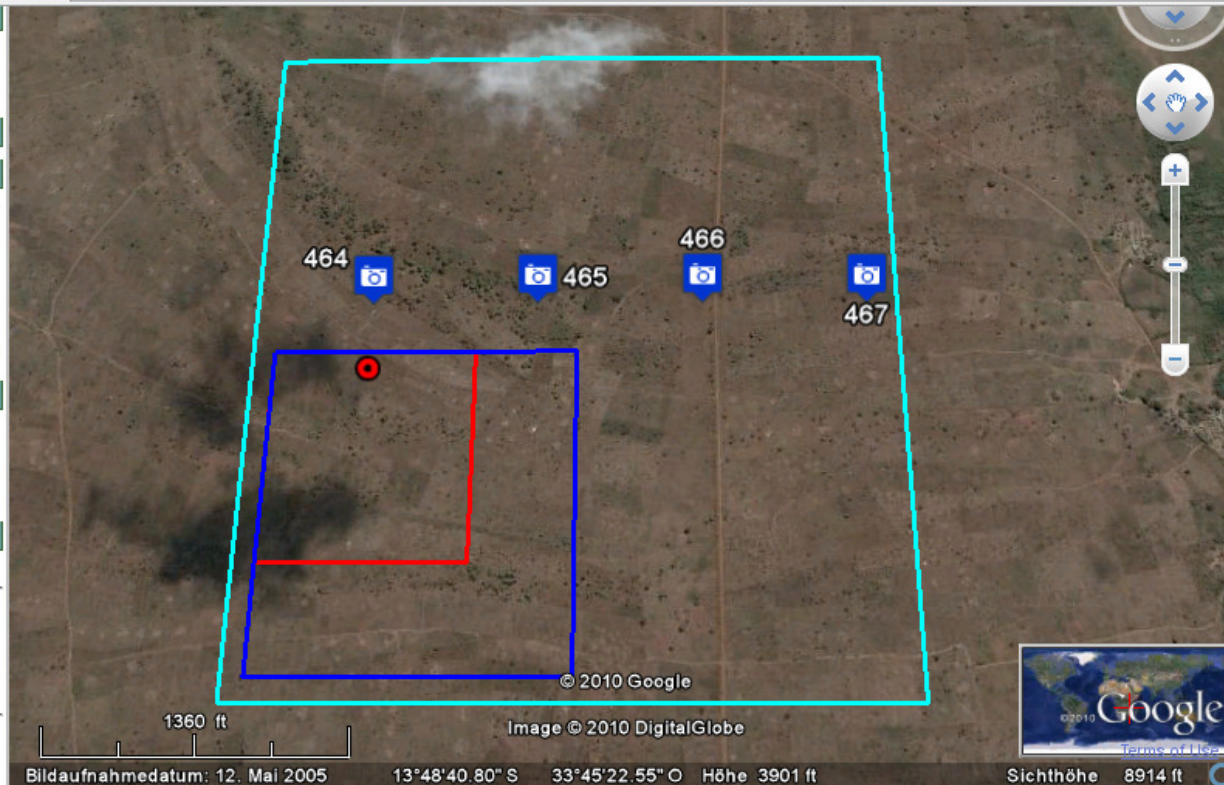
>> Geocoding

Quick Start

Validate random points

Get Confluence Info

Infobutton: Press SHIFT + left mouse to get LandCover-Information



	good	not su	bad
MODIS:	<input type="radio"/>	<input type="radio"/>	<input type="radio"/>
GlobCover:	<input type="radio"/>	<input type="radio"/>	<input type="radio"/>
GLC-2000:	<input type="radio"/>	<input type="radio"/>	<input type="radio"/>

Non-Woody Savannahs

Mosaic grass or shrub or forest/Cropland

Cultivated and managed areas

Problems choosing the right LandCover? View your profile and choose simple validation method.

Provide picture URLs (ending with .jpg/.png) if available:

show

More information about validation:

used Google Earth high resolution to validate show help

Submit Cancel

This site is operated by IIASA, FH Wiener Neustadt and FELIS.



Transparency: 37

Show none

[>> Land Cover Data](#)

[>> Disagreement](#)

[>> Validation](#)

Already Validated Areas:

Show validated Areas

[Load Confluence Points](#)

[Load Country Statistics](#)

[Load uploaded Pictures](#) [remove](#)

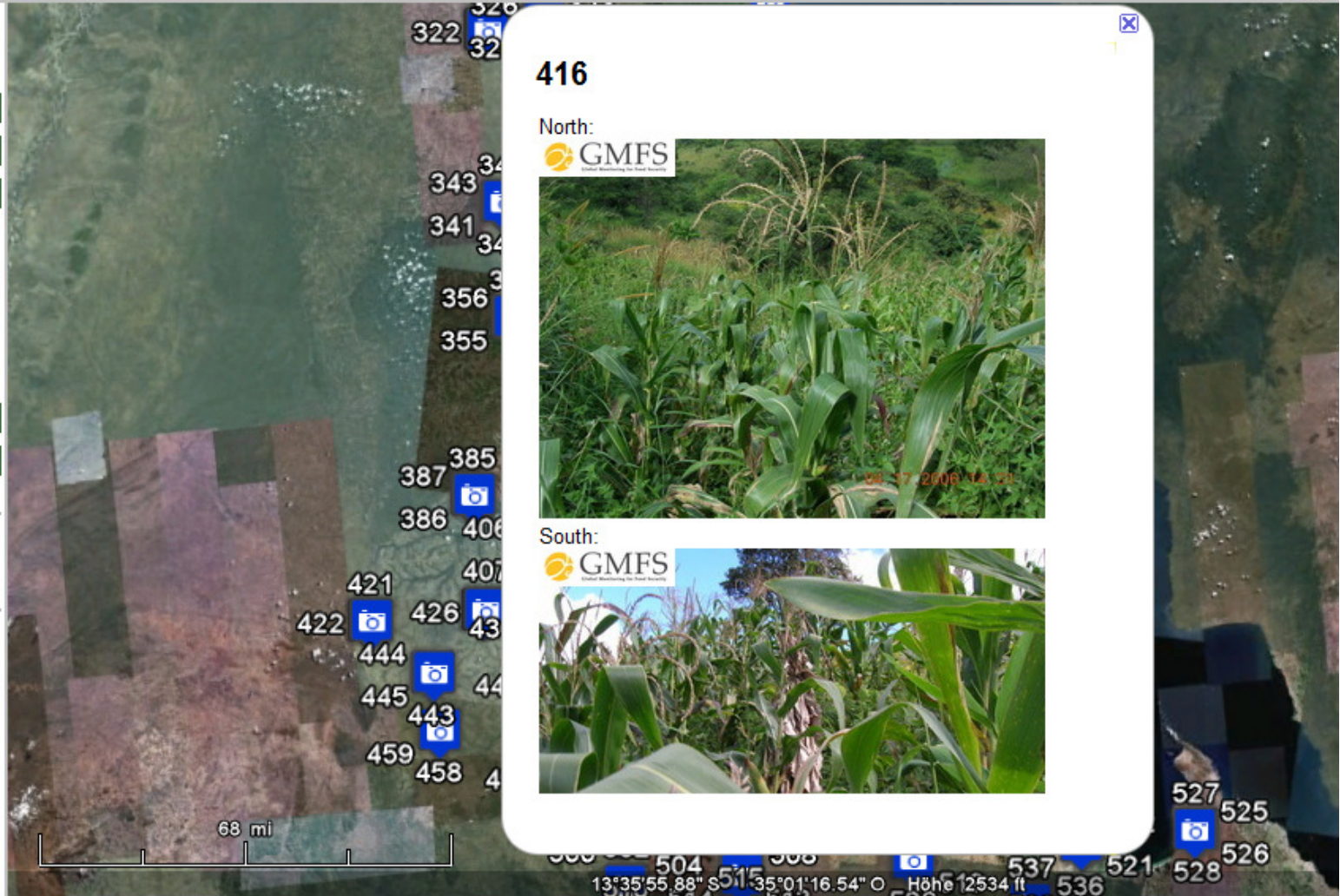
[>> Additional Data](#)

[>> Geocoding](#)

Quick Start

[Validate random points](#)

Infobutton: Press SHIFT + left mouse to get LandCover-Information



This site is operated by IIASA, FH Wiener Neustadt and FELIS.



Transparency: 37



Show none

[>> Land Cover Data](#)

[>> Disagreement](#)

[>> Validation](#)

Already Validated Areas:

Show validated Areas

[Load Confluence Points](#)

[Load Country Statistics](#)

[Load uploaded Pictures](#)

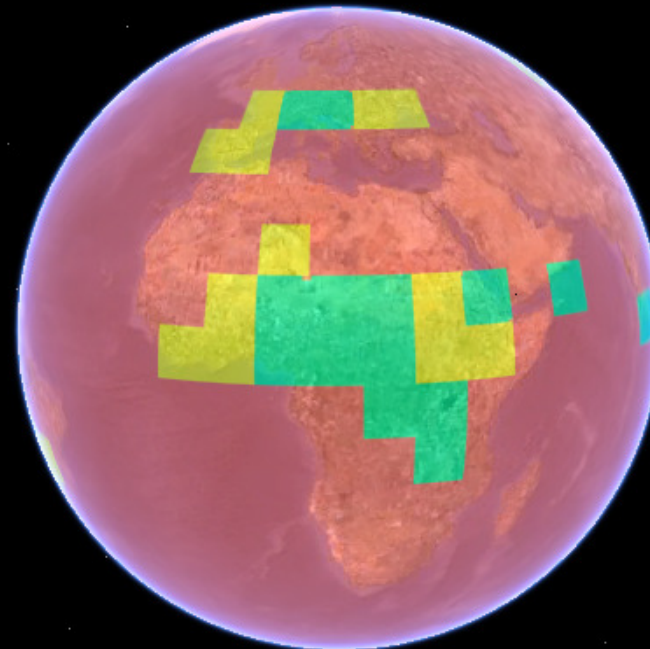
[>> Additional Data](#)

[>> Geocoding](#)

Quick Start

[Validate random points](#)

Infobutton: Press SHIFT + left mouse to get LandCover-Information



Data SIO, NOAA, U.S. Navy, NGA, GEBCO
Image © 2010 DigitalGlobe
© 2010 Cnes/Spot Image

Slid

This site is operated by IIASA, FH Wiener Neustadt and FELIS.



Transparency: 37



Show none

[>> Land Cover Data](#)

[>> Disagreement](#)

[>> Validation](#)

Already Validated Areas:

Show validated Areas

[Load Confluence Points](#)

[Load Country Statistics](#)

[Load uploaded Pictures](#)

[>> Additional Data](#)

[>> Geocoding](#)

Quick Start

[Validate random points](#)

Infobutton: Press SHIFT + left mouse to get LandCover-Information



This site is operated by IIASA, FH Wiener Neustadt and FELIS.



Sichthöhe

Conclusions

- Community remote sensing can help to gather important information on land cover – big potential for the future
- Community remote sensing can link with social networks such as facebook
- Tools such as Geo-wiki.org can help to engage the wider public
- Issues of data quality need to be addressed
- Issues of land cover change need to be addressed

Thank you!

- Contact
- Steffen Fritz: fritz@iiasa.ac.at