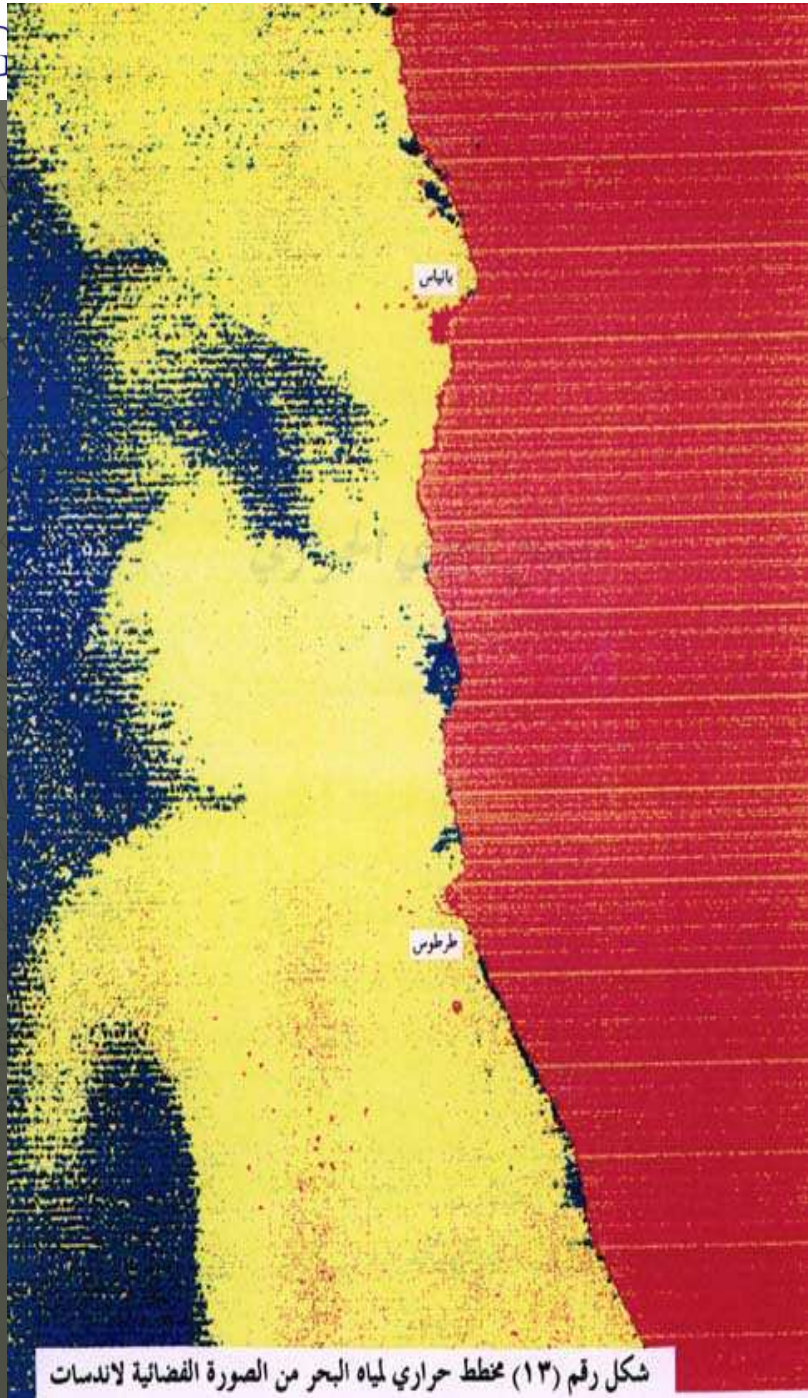


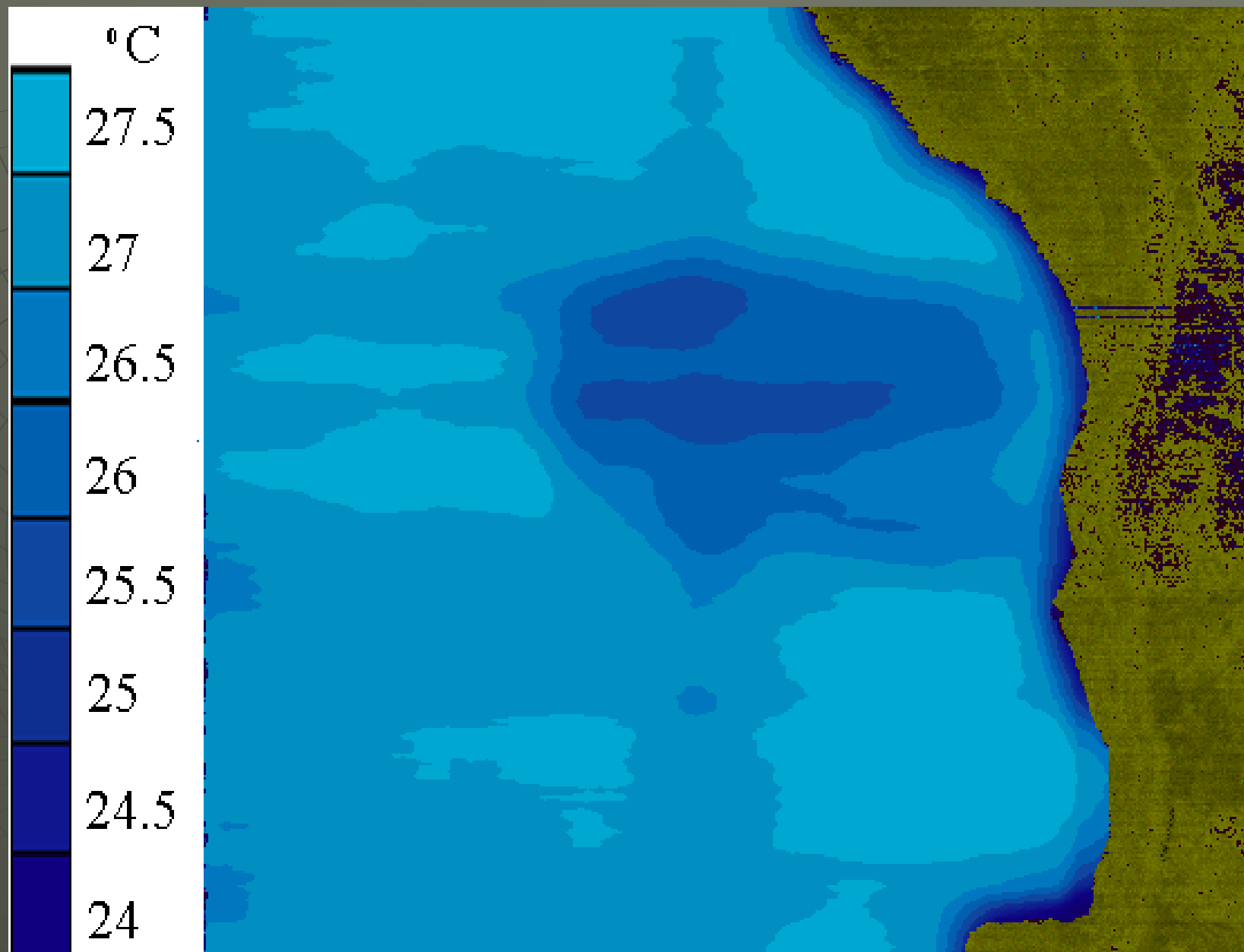
**Water resources management
using Remote Sensing technique**
General Organization of Remote sensing
Syria



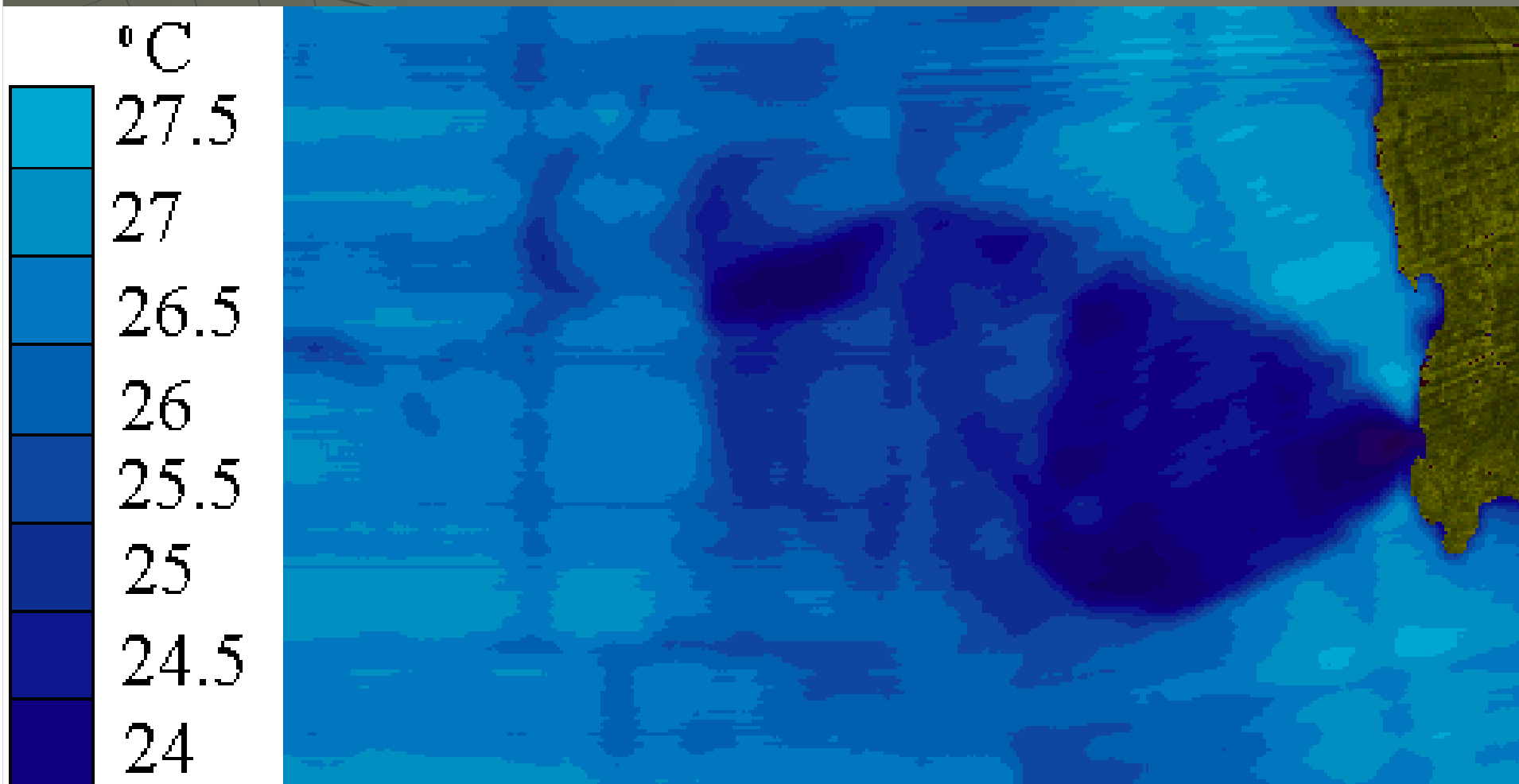
G



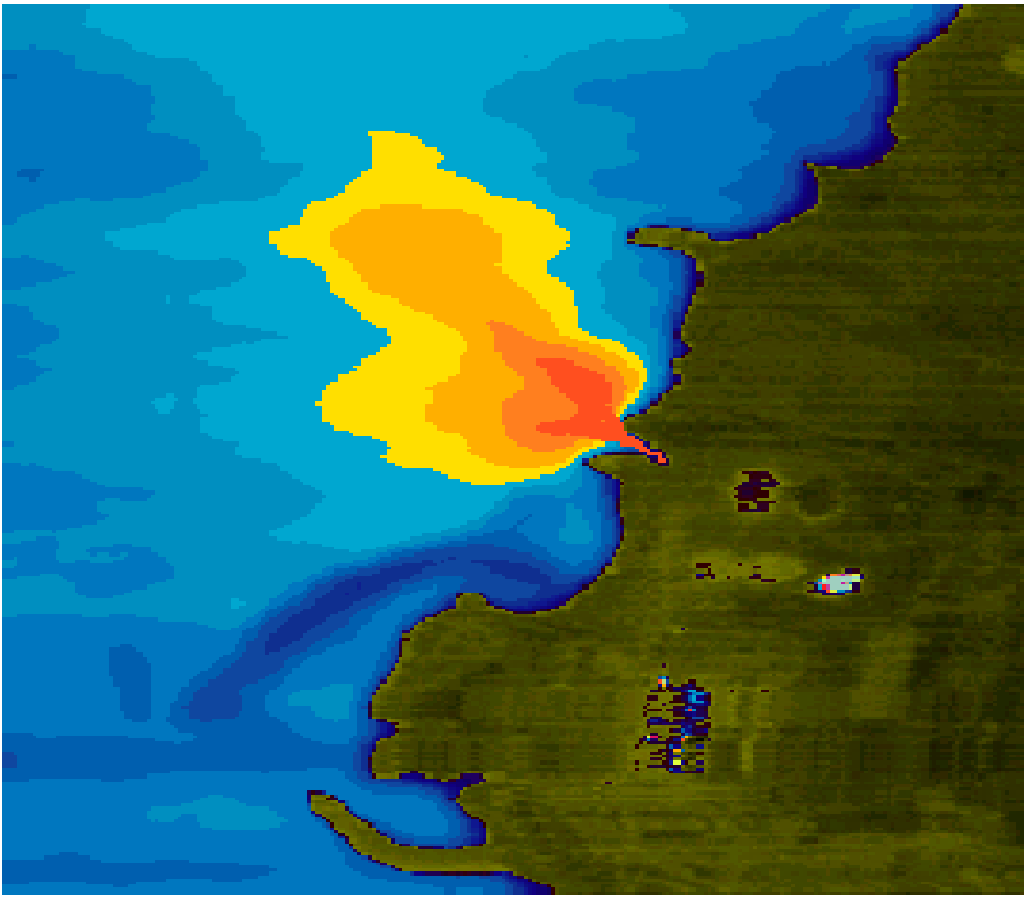
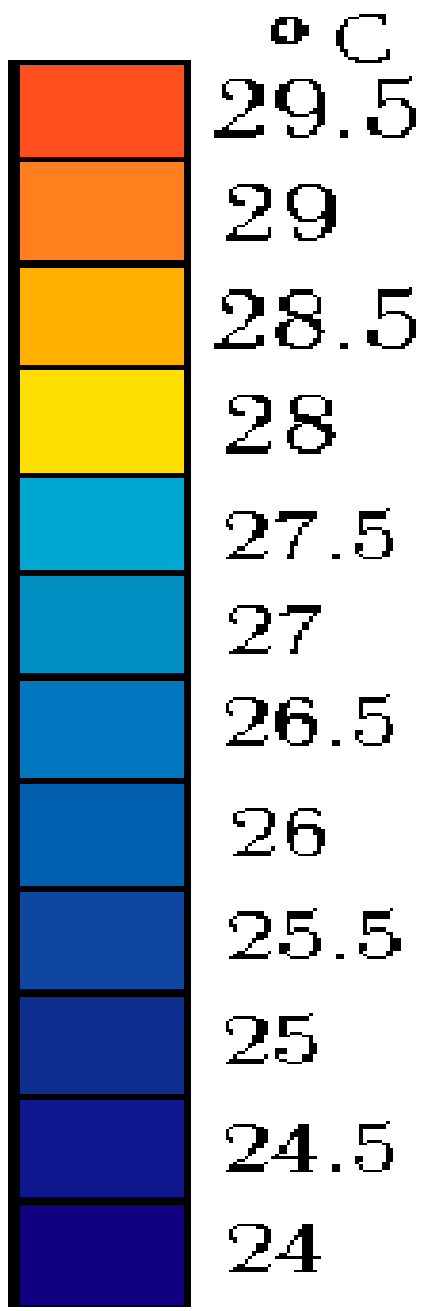




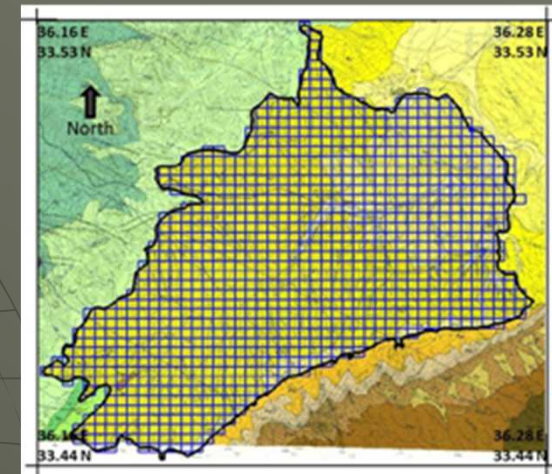
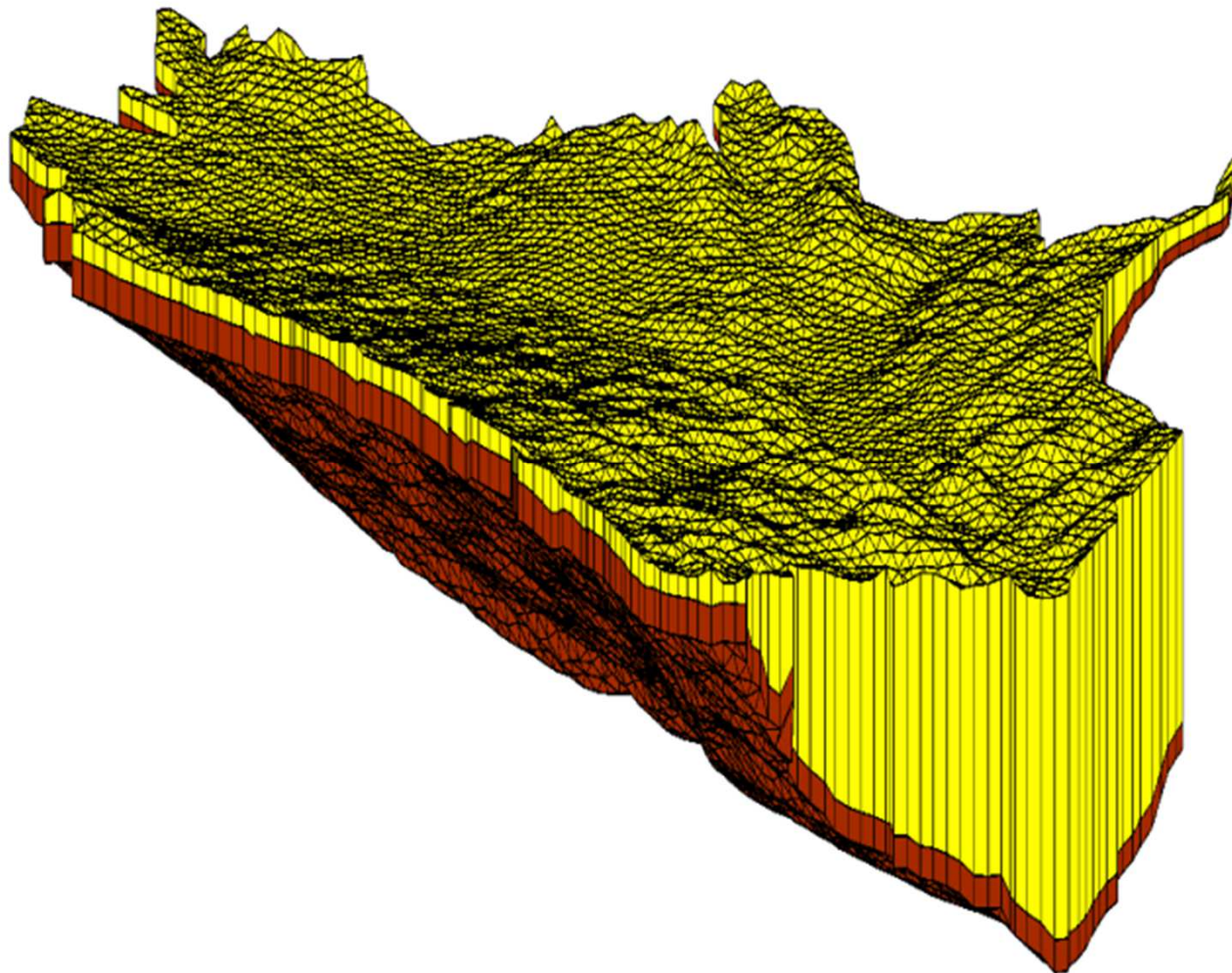
في الكشف عن ينابيع المياه العذبة تحت البحرية

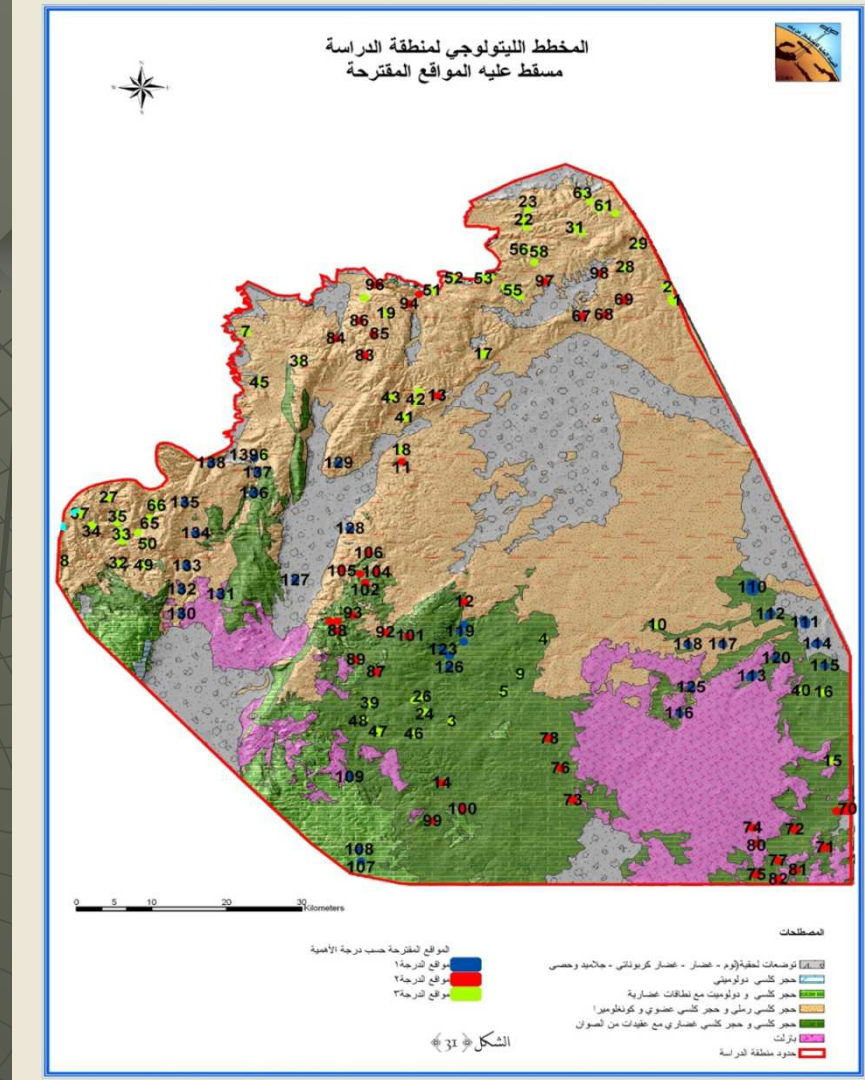
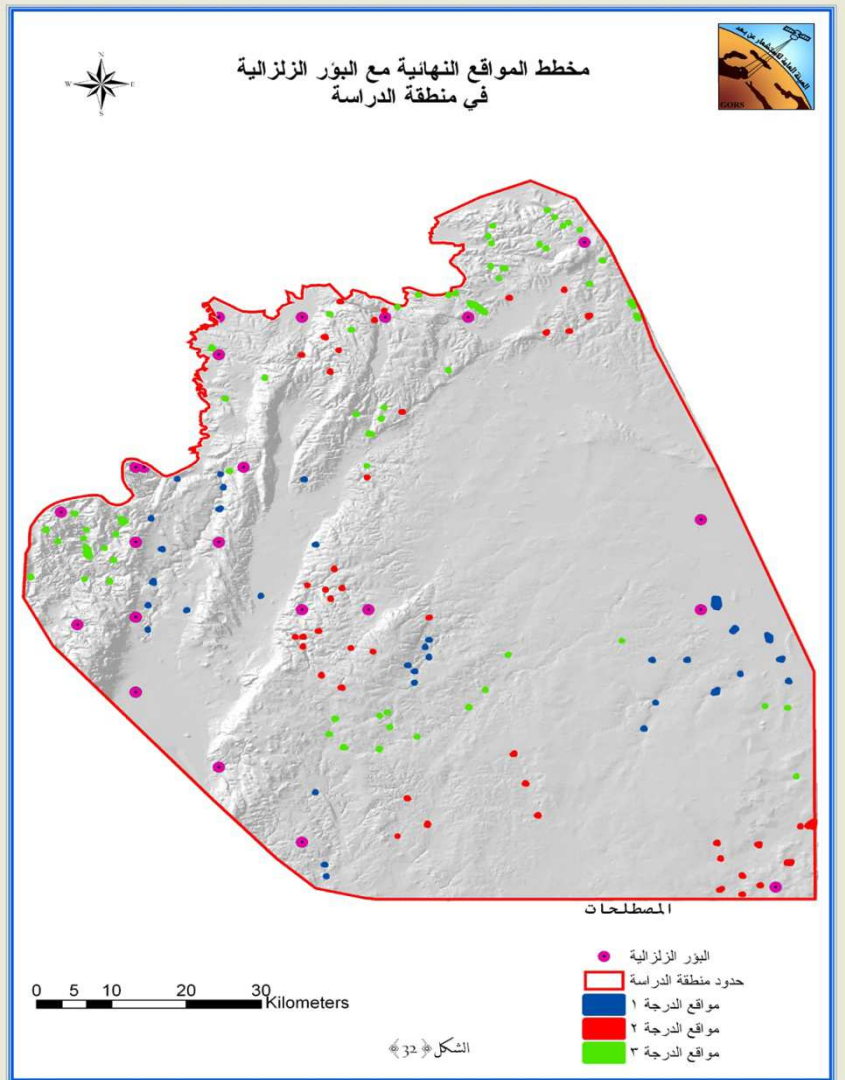


مصبات الأنهار في البحر

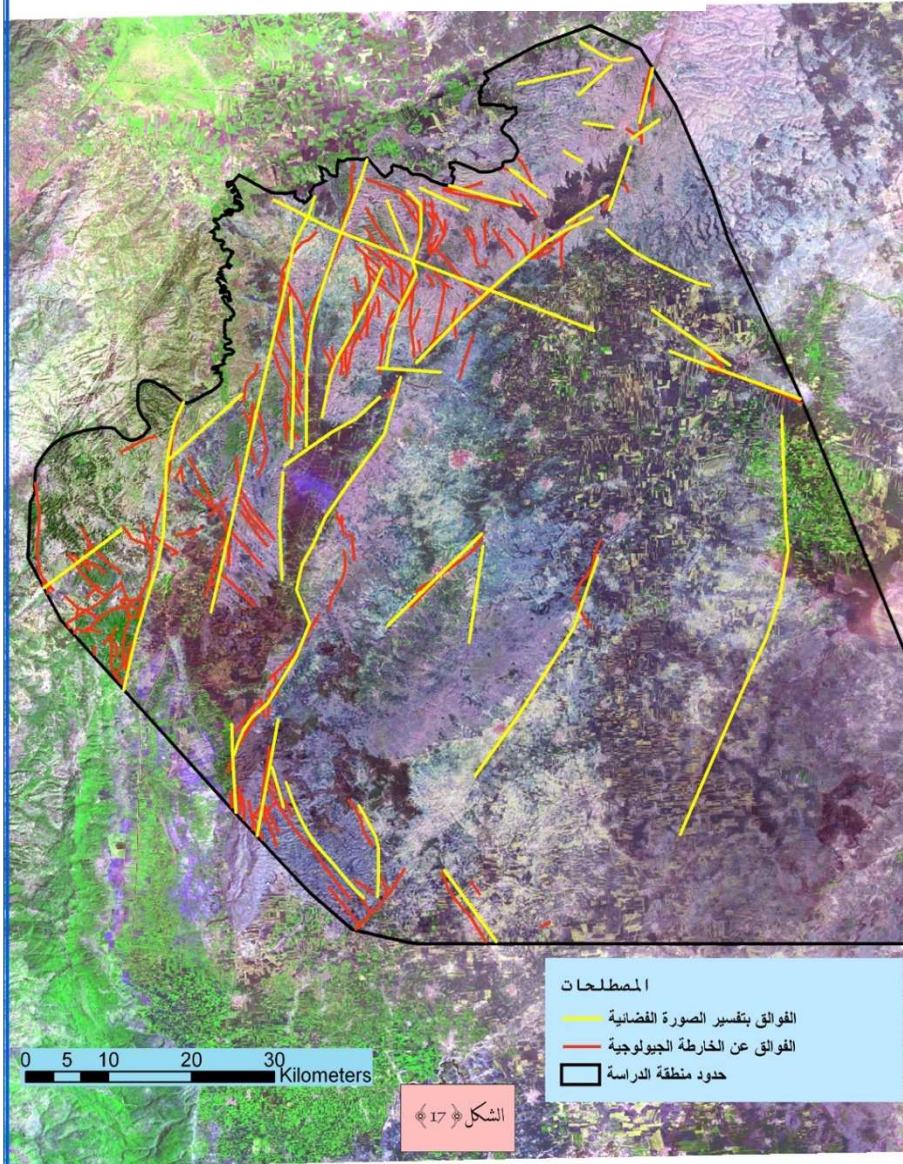


Estimating and developing of water resources in the south-western part of Qalamoun basin using Remote sensing, GIS and modeling techniques.

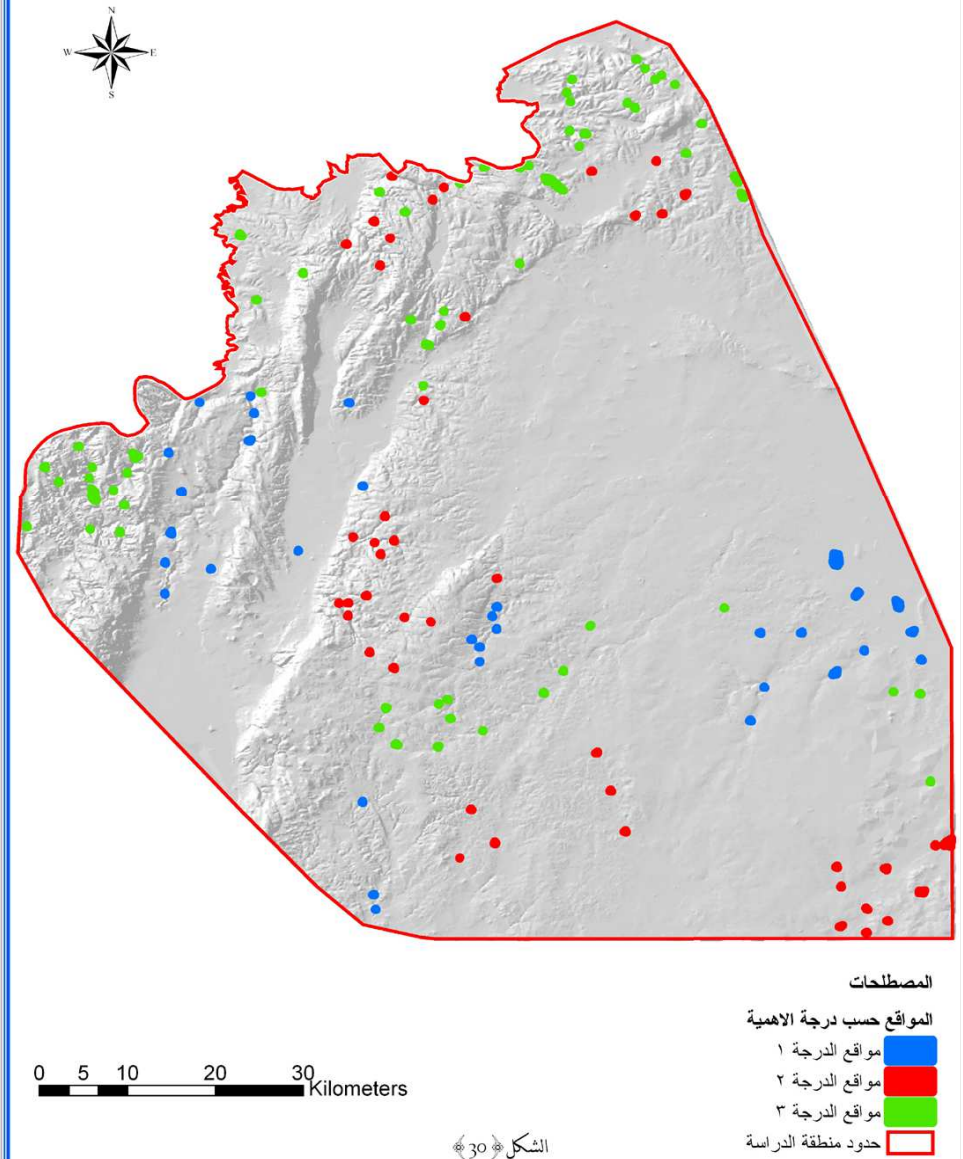


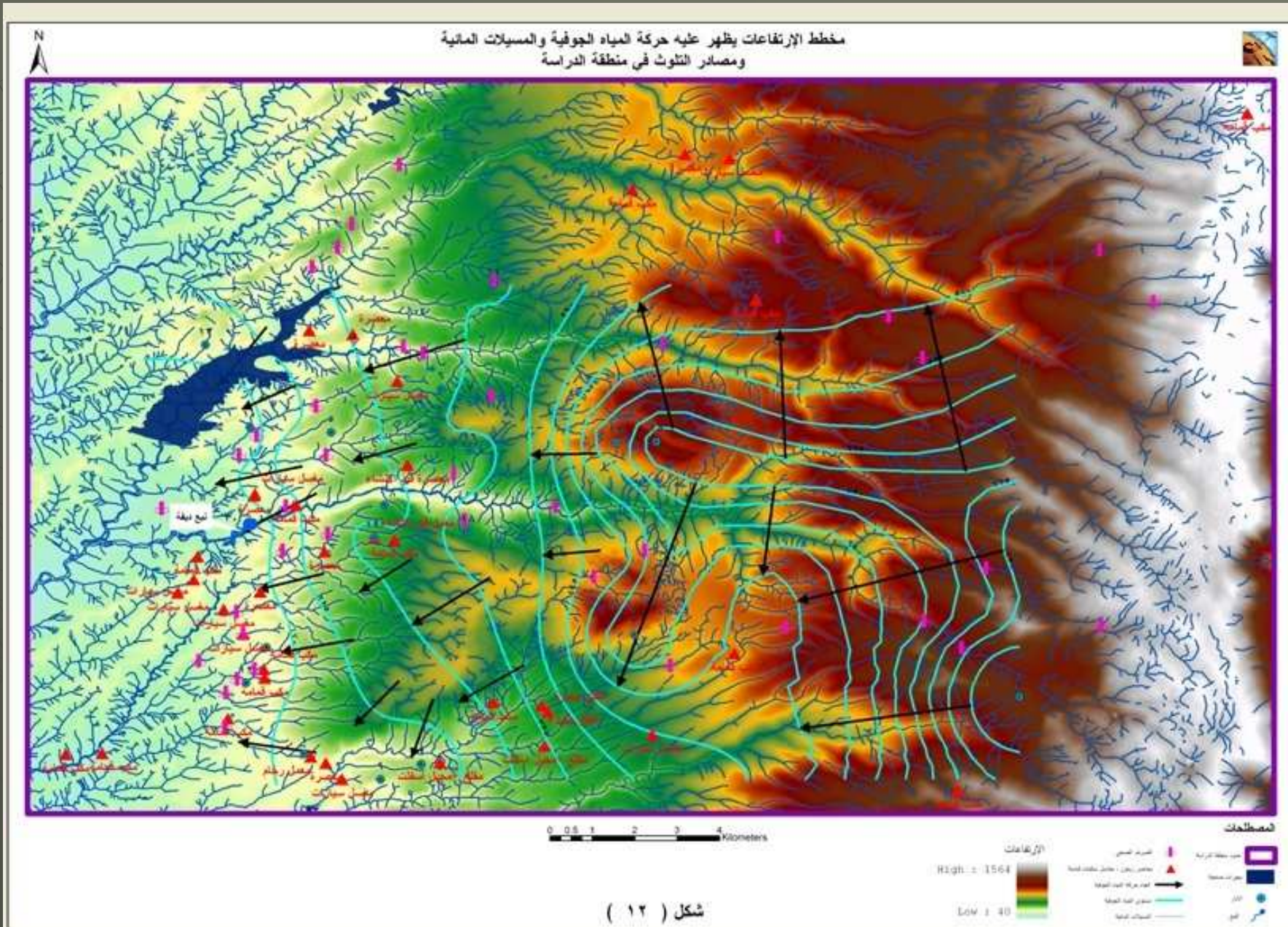


Locating best Sites for water harvesting in Idleb Province

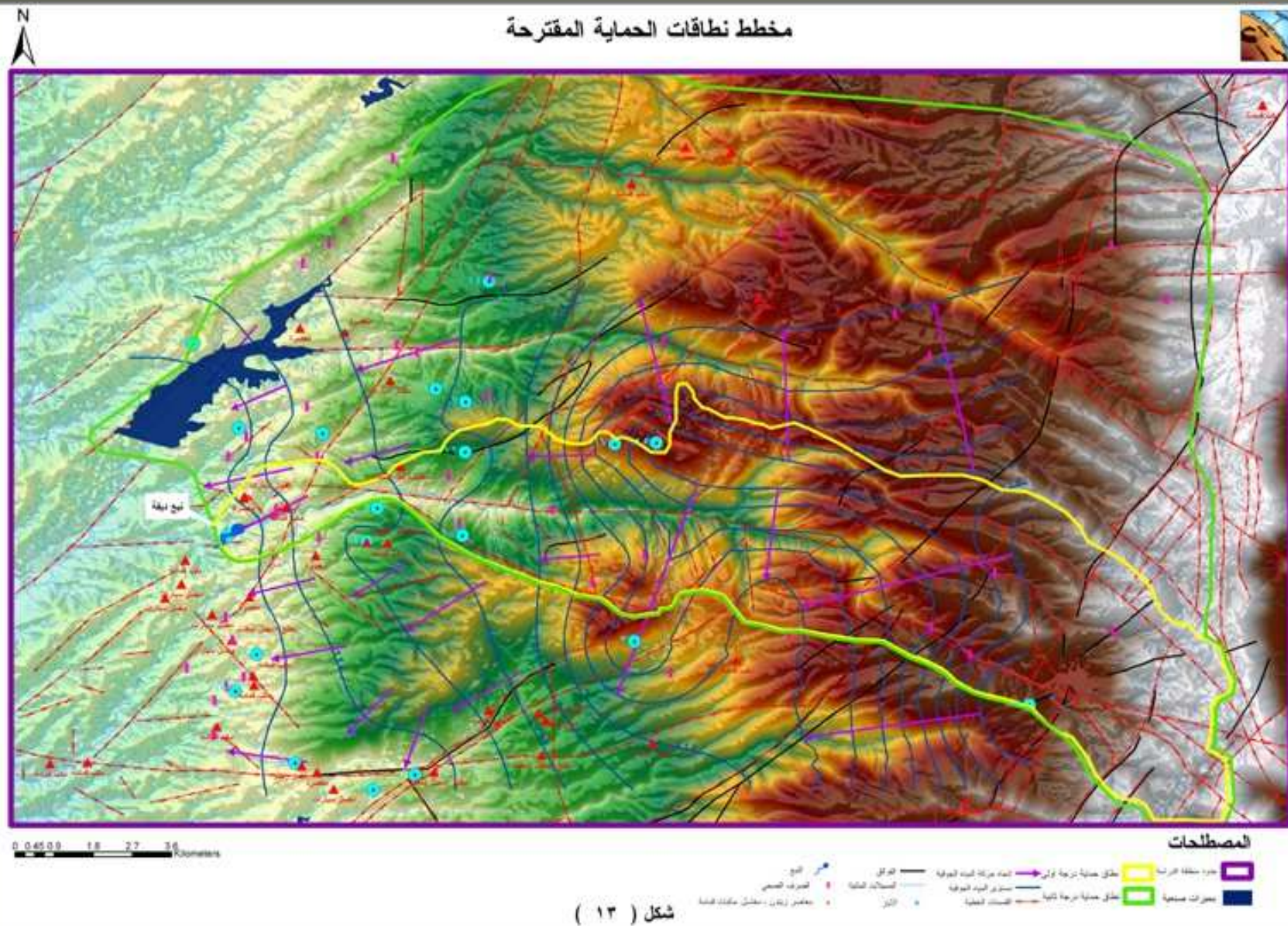


Locating best Sites for water harvesting in Idleb Province

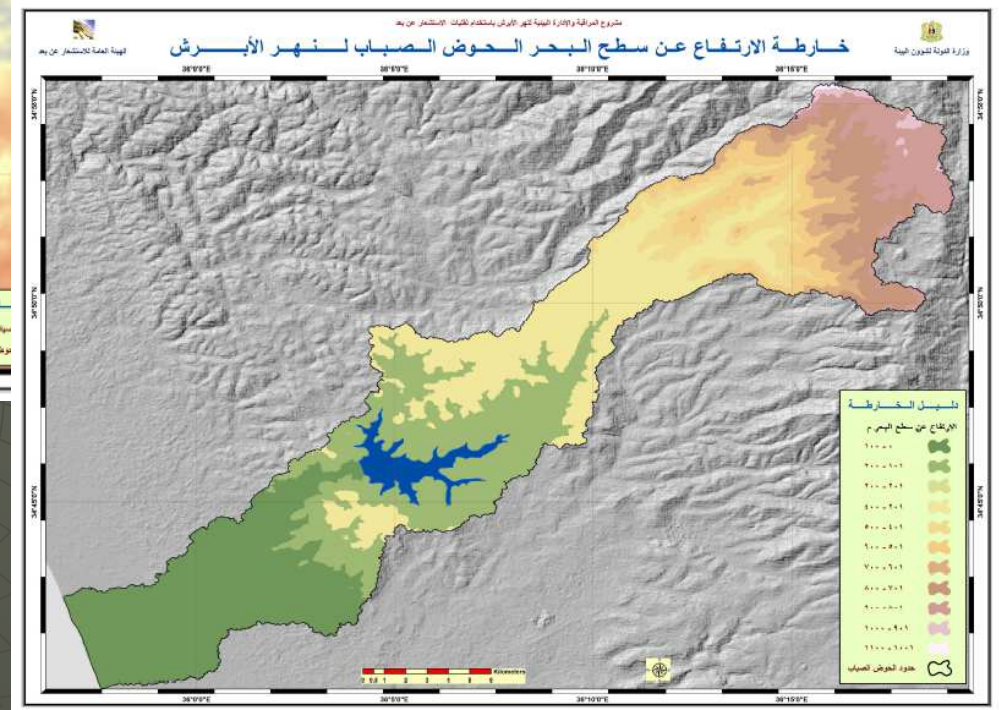
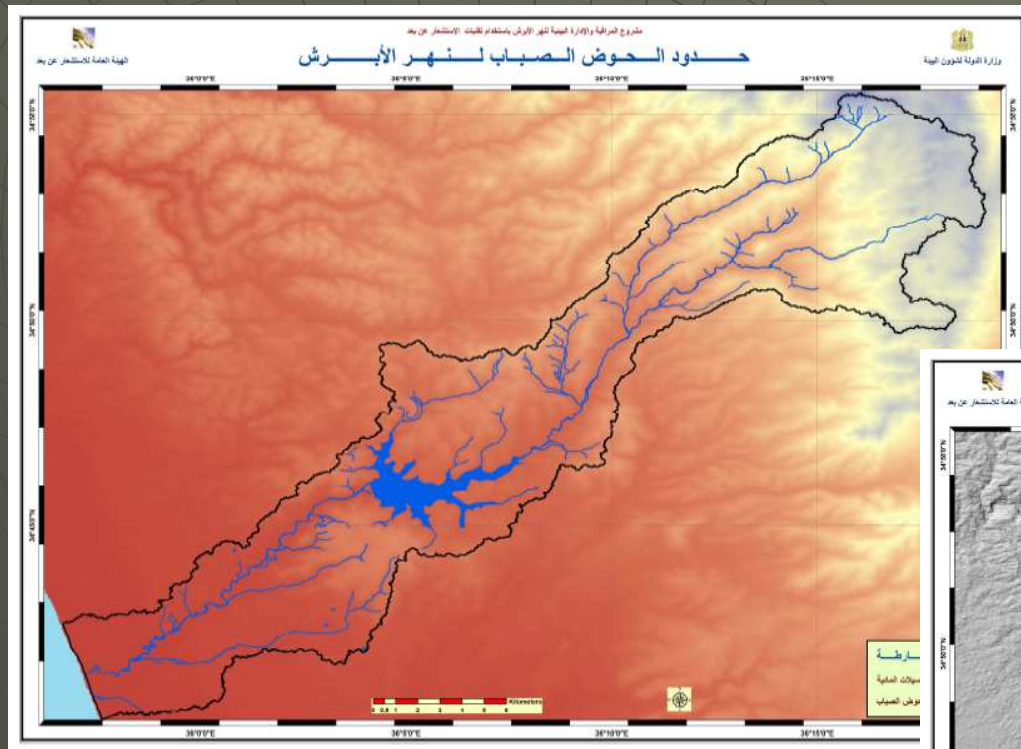


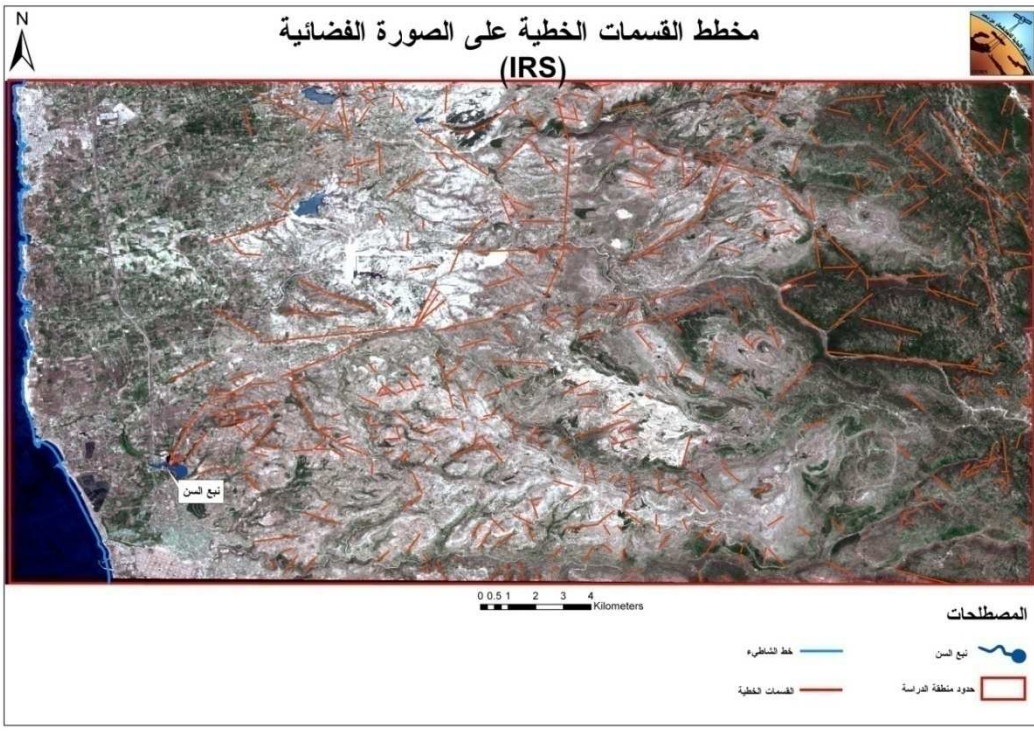


مخطط نطاقات الحماية المقترحة

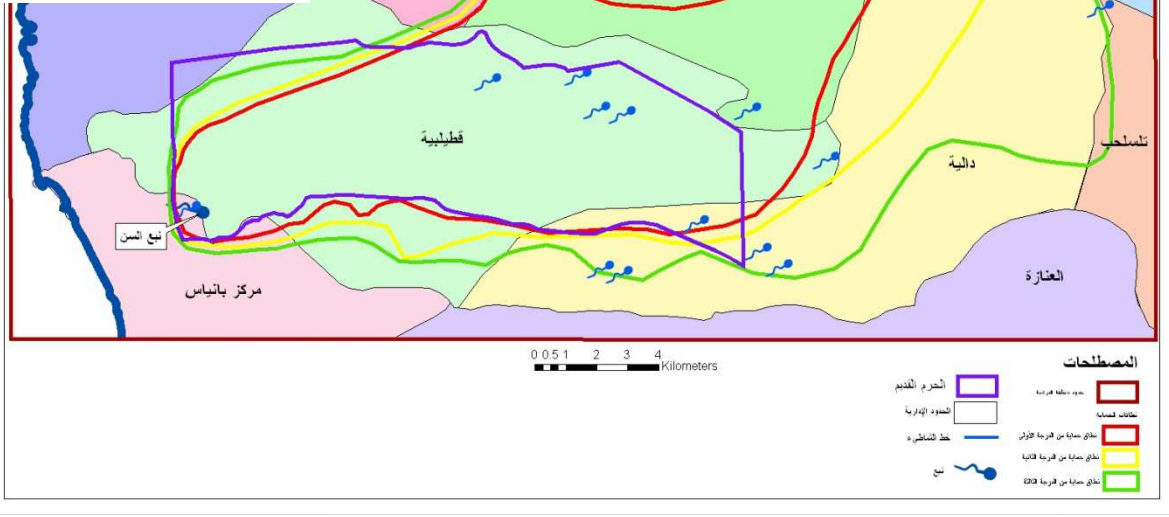
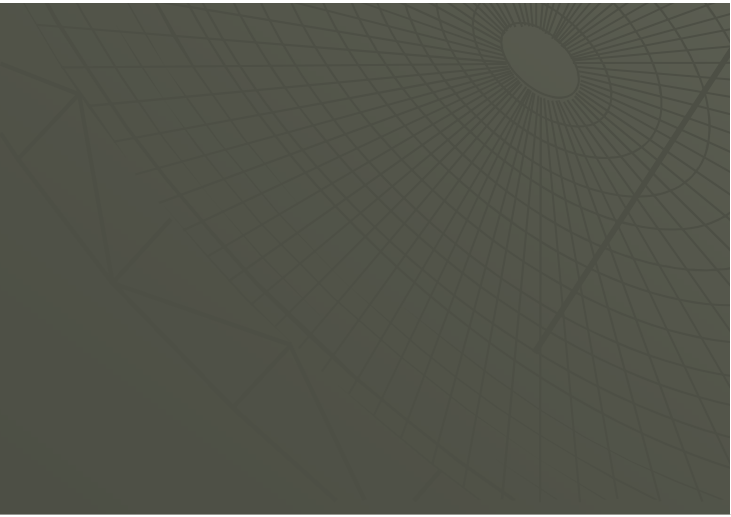
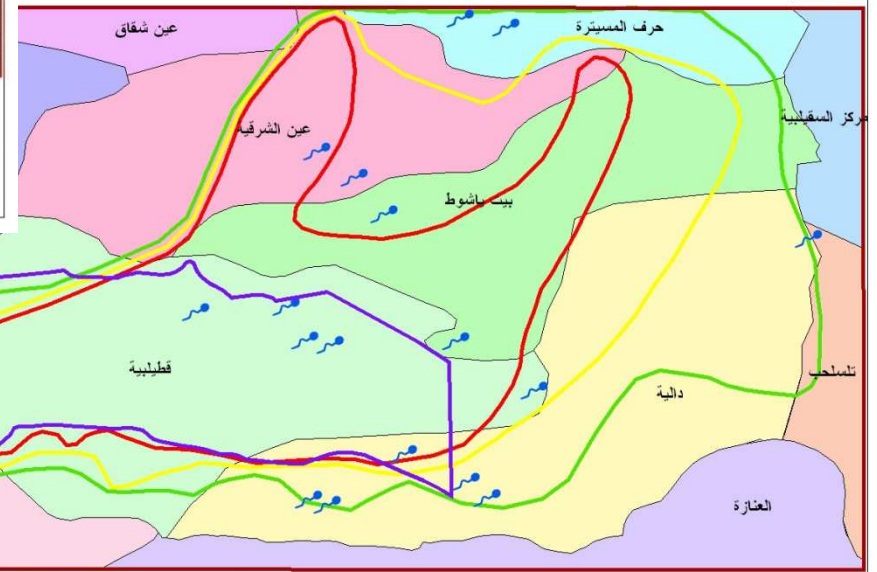


Monitoring Rivers for Environmental Purpose





مخطط نطاقات الحماية المقترح مع مخطط التقسيمات الإدارية (النوا









Training Lab



