

Recent Applications of RESOURCESAT-2



**Presentation by Indian Delegation at the
49th Session of STSC-UNCOPUOS
Vienna - February 2012**

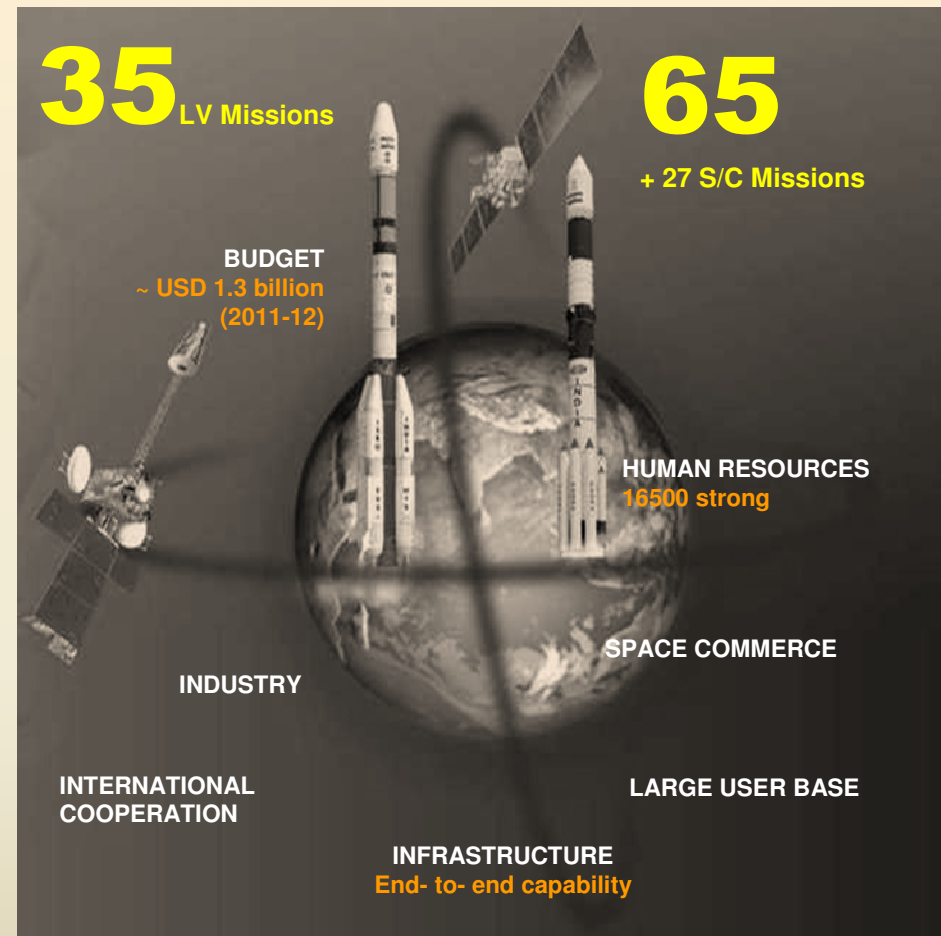


Outline

- **Space Programme in India**
- **Earth Observation Assets of India**
- **RESOURCESAT-2: Payloads**
- **Uniqueness of Indian EO Programme**
- **Recent Applications**
 - **Nation-wise periodic Land Use/ Land Cover mapping (using AWiFS data of RESOURCESAT-2)**
 - **Water Resources Information System (using LISS III data of RESOURCESAT-2)**
 - **Space-based Information Support for Decentralised Planning (using LISS IV data of RESOURCESAT-2)**

Space Programme in India

- Self reliance in space transportation, spacecraft operations
- Successful demonstration of space technology Applications
- Strong Institutional Mechanism to sustain the activities
- Steadfast International relations



Earth Observation Assets of India



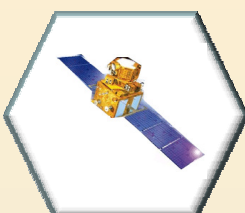
2002
KALPANA-1
VHRR



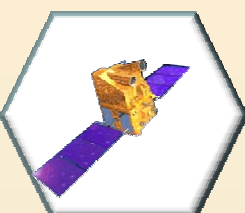
2003 I
NSAT-3A
VHRR, CCD



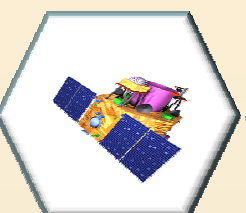
22.10.2001
TES
Step& Stare PAN



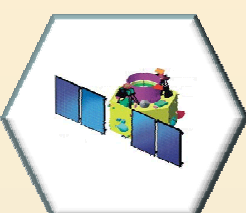
17.10.2003
RESOURCESAT-1
LISS 3 & 4; AWiFS



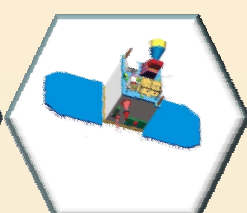
05.05.2005
CARTOSAT-1
PAN, F/A



10.01.2007
CARTOSAT-2
PAN



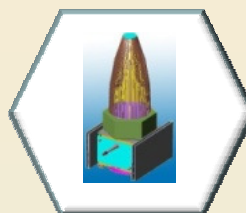
28.04.2008
CARTOSAT- 2A
PAN



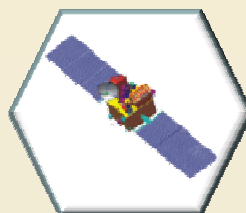
28.04.2008
IMS-1
HySI; Mx

Aerial

Digital
Camera
Laser
Terrain
Mapper



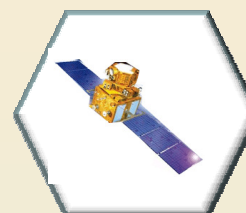
20.04.2009
RISAT-2
X-band SAR



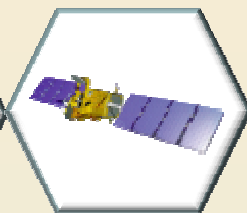
23.09.2009
OCEANSAT-2
OCM, SCAT; ROSA



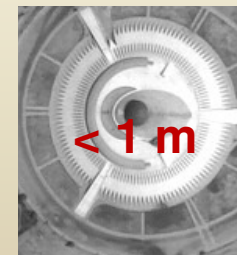
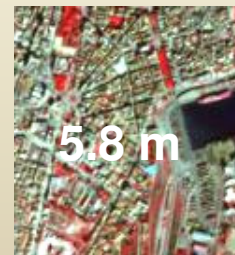
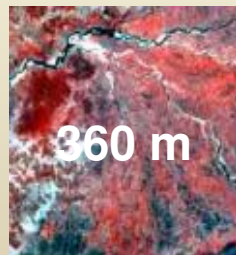
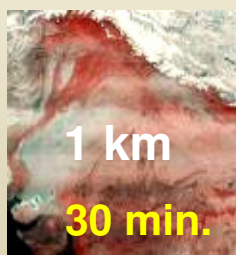
12.07.2010
CARTOSAT- 2B
PAN



20.04.2011
RESOURCESAT-2
LISS 3 & 4; AWiFS



12.10.2011
MEGHATROPIQUES
MADRAS, SAPHIRE,
SCARAB

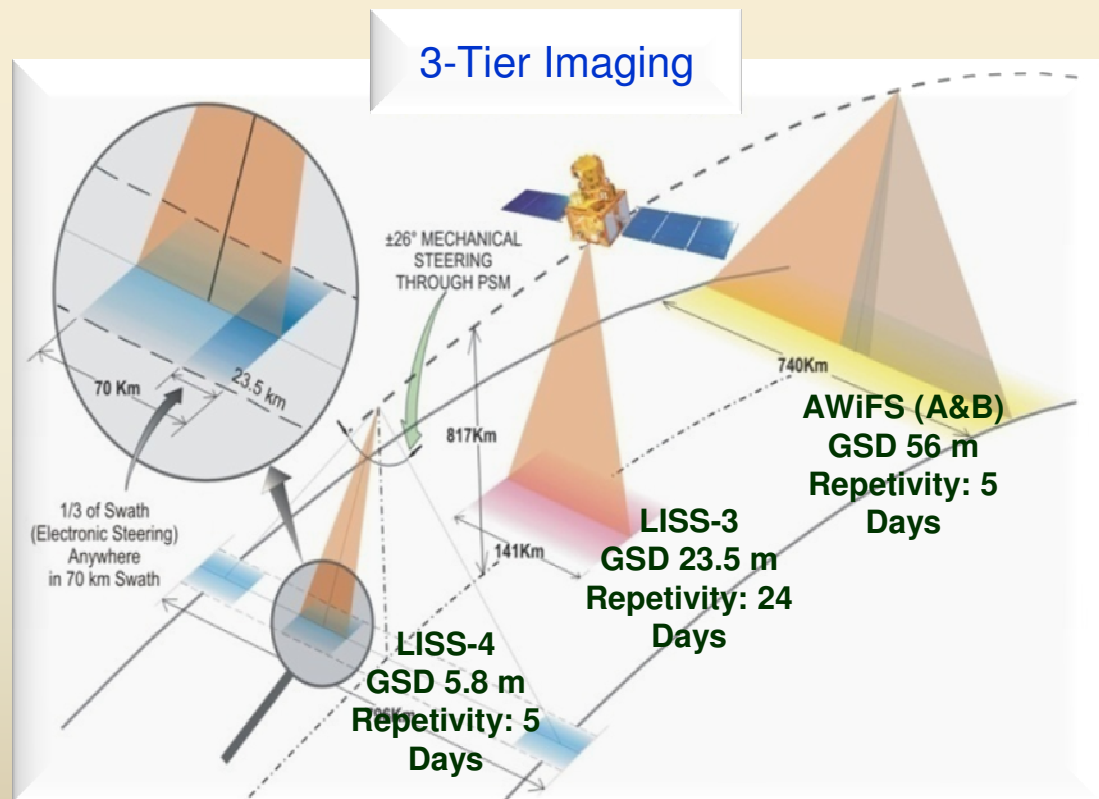


.to be augmented with RISAT-1, SARAL, INSAT 3D & GISAT

RESOURCESAT-2

PSLV-C 16: 3 Satellites in a single mission, with YOUTHSAT & X-SAT

Lift-off: April 20, 2011 [10.12 Hrs IST]



RESOURCESAT-2: Payloads

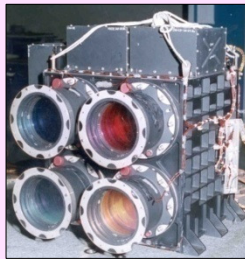
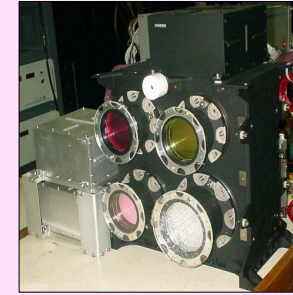


AWiFS

Swath: 740 km

Spectral Bands: 0.52-0.59; 0.62-0.68; 0.77-0.86;
1.55-1.70 μm

Quantization: 12 bit (as against 7 in R-1)

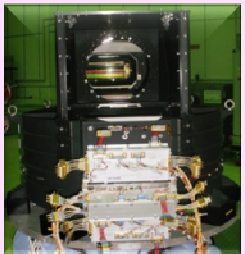


LISS-3

Swath: 140 km

Spectral Bands: 0.52-0.59; 0.62-0.68; 0.77-0.86; 1.55-1.70 μm

Quantization: 10 bit (as against 7 in R-1)



LISS-4

Swath: 70 km

Spectral Bands: 0.52-0.59; 0.62-0.68; 0.77-0.86 μm

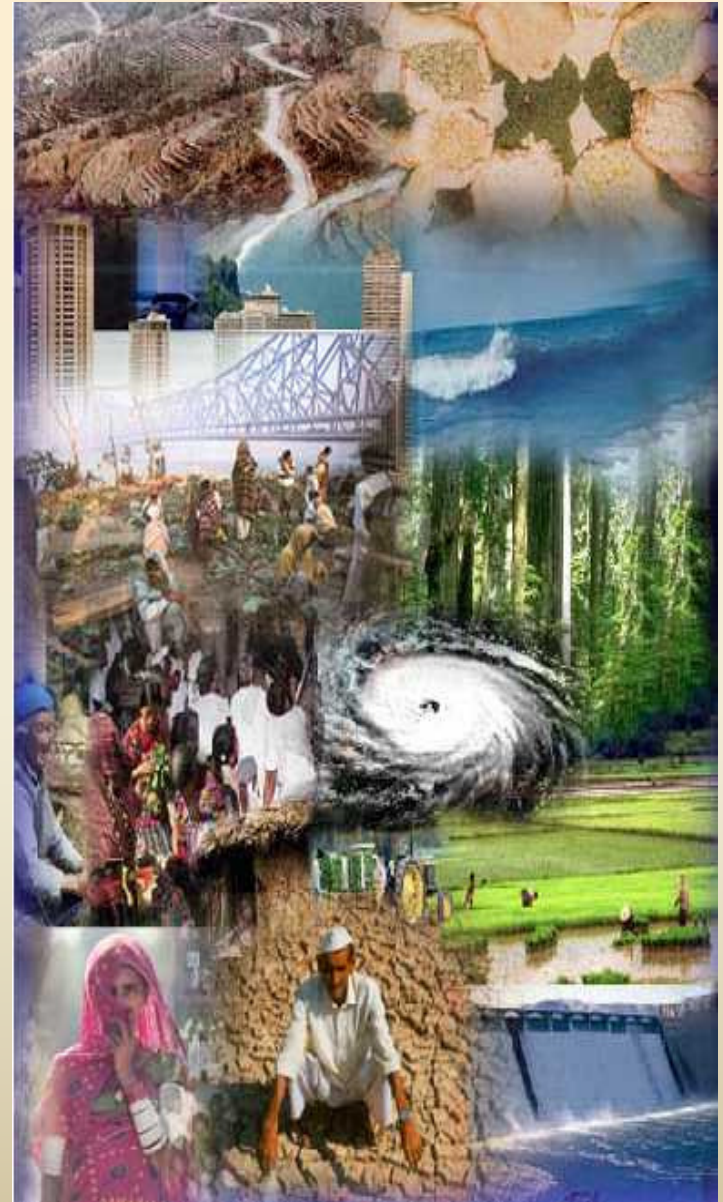
Quantization: 10 bit (as against 7 in R-1)



AIS: A New Payload from COMDEV, Canada for automatic identification of ships

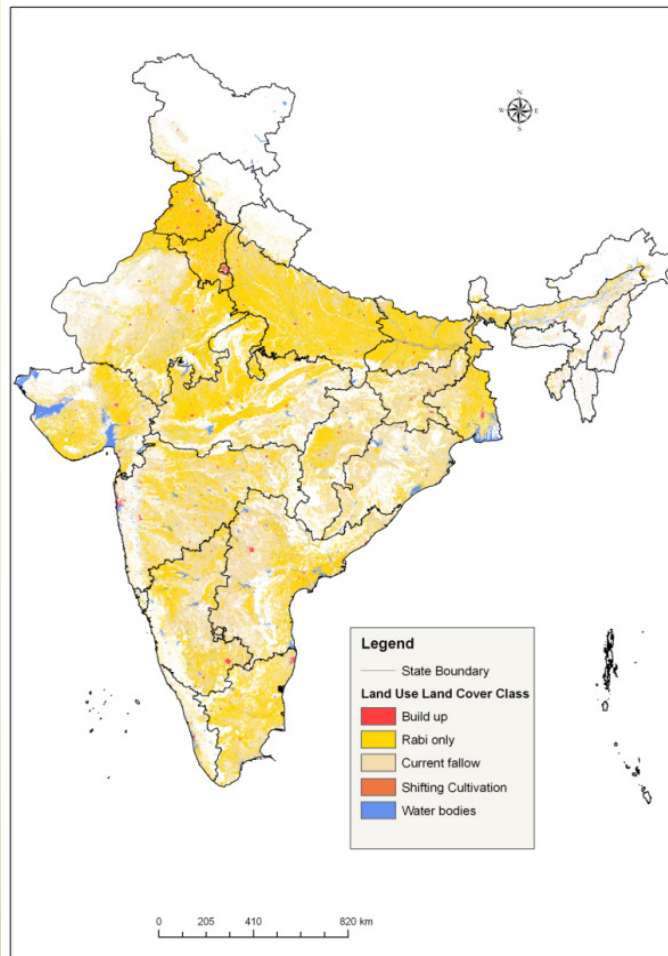
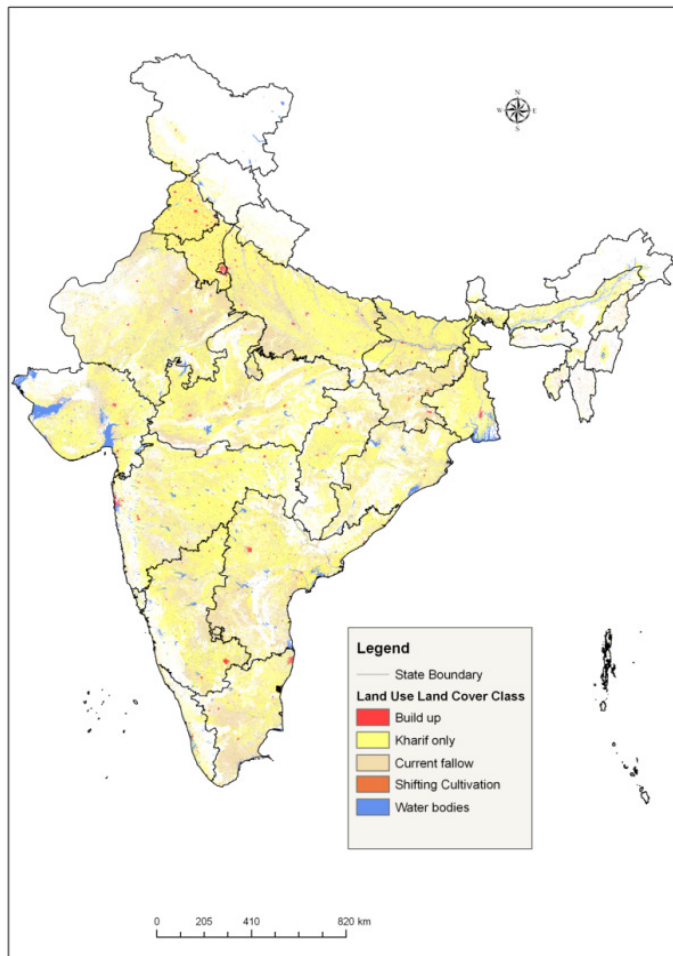
Indian EO Programme: The Uniqueness

- **Vibrant Space Segment: Constellation of Satellites**
 - Resourcesat, Cartosat, Oceansat
- **Strong Ground Mechanisms**
 - Institutional Framework: NNRMS...
 - Ground support: Enabling techniques
- **Diversity of Applications**
 - Natural Resources: Land & Water
 - Infrastructure building: Physical & Social
 - Livelihood support: PFZ, Bharat Nirman
 - Disaster Management
- **Addressing nation's developmental priorities**



Land Use and Land Cover Mapping using AWiFS

7th Cycle : 2010-11 Crop Year



S.No	State / UT	Kharif	Rabi
1	ANDAMAN & NICOBAR	0.56	0.00
2	ANDHRA PRADESH	101.28	63.85
3	ARUNACHAL PRADESH	1.93	1.47
4	ASSAM	25.69	7.90
5	BIHAR	53.15	53.46
6	CHATTISGARH	52.20	27.48
7	DELHI	0.53	0.45
8	GOA	0.90	0.42
9	GUJARAT, DNH,DD	74.88	59.56
10	HARYANA	35.41	30.86
11	HIMACHAL PRADESH	3.85	1.72
12	JAMMU & KASHMIR	7.84	2.94
13	JHARKAND	19.47	16.03
14	KARNATAKA	85.29	55.16
15	KERALA	8.09	4.30
16	LAKSHADWEEP	0.00	0.00
17	MADHYA PRADESH	126.65	110.72
18	MAHARASTRA	149.57	77.17
19	MANIPUR	1.98	0.11
20	MEGHALAYA	2.73	0.31
21	MIZORAM	0.87	0.08
22	NAGALAND	1.91	0.62
23	ORISSA	51.22	20.14
24	PANJAB & CHADIGARH	0.23	0.20
25	PONDICHERRY	40.08	37.32
26	RAJASTHAN	100.36	95.90
27	SIKKIM	0.80	0.54
28	TAMIL NADU	41.50	53.11
29	TRIPURA	2.47	0.91
30	UTTAR PRADESH	136.46	147.86
31	UTTARAKHAND	6.26	2.94
32	WEST BENGAL	49.67	35.28
	Total	1183.80	908.82

- Six cycles of annual assessment completed i.e 2004-2010
- in season NSA assessment is completed for Kharif and Rabi 2010-2011

Water Resources Information System (India WRIS)

To address challenges in water sector the ultimate requirement is an information system having four elements: (i) Data Collection; (ii) Data storage, analysis, transformation into user-friendly format; (iii) Geo-visualisation & Decision Making; and (iv) Information Dissemination at Public domain

Source: www.india-wris.nrsc.gov.in

Major Objectives

- India-WRIS S/w, Metadata, Database (30 spatial layers under 5 major groups)
- Basin-wise reports
- Watershed atlas of the country
- Infrastructure development at CWC
- Capacity building of CWC manpower

The screenshot displays the India-WRIS WebGIS website. At the top, there is a banner with the text "India-WRIS WebGIS" and a navigation menu with buttons for Home, Water Resources of India, India - WRIS Project, Project Management, Spatial Data, Downloads, Contact Us, and Feedback. Below the banner, there is a "News And Events" section with links to "First ISRO Team Meeting at BRSSC-I", "Chairman review", and "Training programme held for CWC officers". To the right of this section is a large image of a dam. Below the dam image are three circular icons labeled "India Dams", "India Rivers", and "India Basins". At the bottom right, there is a "What's New??" section with two news items: "India WRIS project website launched" and "India WRIS application under development". The central part of the page features a large blue water drop logo with "India WRIS" inside, and the text "इंडिया - वारिस India - WRIS" in Hindi and English. Below this, there is a quote in Hindi: "देश में जल संसाधन आँकड़ों का जनन य वेब सामर्थ्य सूचना प्रणाली का क्रियान्वयन" and the text "Generation of Database and implementation of Web Enabled Water Resources Information System in the Country". At the bottom of the page, there is a footer with "Last Updated: Dec 05, 09", "copyright2009", and navigation links for "Edimap", "Links", "FAQ's", and "Administrator".

Water Resources Information System (India WRIS)

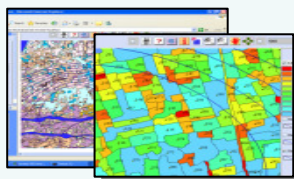
SL. NO.	Main Information System	Sub Information System, Spatial layers and attributes
I.	BASE DATA INFO SYS	Administrative
❖		Infrastructure
❖		Terrain
II.	SURFACE WATER INFO SYS	
1		Water Resource Region Info Sys
2		Basin Info Sys
3		Watershed Info Sys
4		River Info Sys
5		Surface Water Body
6		Water Resources Projects Info Sys
7		Command Area Info Sys
8		Minor Irrigation Info Sys
9		Canal Info Sys
III.	GROUND WATER INFO SYS	
10		Aquifer / Litholog Info Sys
11		Ground Water Level Info Sys
12		Ground Water Potential Info Sys
IV.	HYDRO – MET INFO SYS	
13		Meteorological Info Sys
14		Climate Info Sys
15		Hydro-Observation Info Sys

V.	WATER QUALITY INFO SYS	
16		Surface Water Quality Info Sys
17		Ground Water Quality Info Sys
VI.	SNOW COVER / GLACIER INFO SYS	
18		Snow Cover/Glacier Info Sys
VII.	INLAND NAVIGATION WATERWAYS INFO SYS	
19		Inland Navigation Waterways Info Sys
VIII.	INTER-BASIN TRANSFER LINKS INFO SYS	
20		Inter-basin Transfer Links Info Sys
IX.	HYDRO - MET EXTREMES INFO SYS	
21		Flood Info Sys
22		Drought Info Sys
23		Extreme Events Info Sys
X.	LAND RESOURCES INFO SYS	
24		Land Use / Land Cover Info Sys
25		Land Degradation Info Sys
26		Wasteland Info Sys
27		Soil Info Sys
XI.	WATER TOURISM INFO SYS	
28		Water Tourism Info Sys
XII.	SOCIO – ECONOMIC INFO SYS	
29		Rural Info Sys
30		Urban Info Sys

Water Resources Information System (India WRIS)

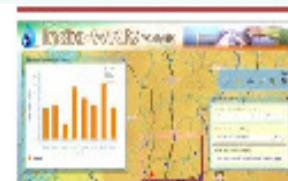
Facilities in India-WRIS

Mapping Tools



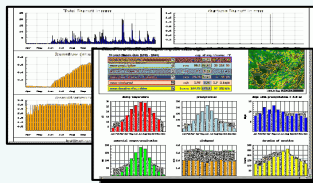
Standard and Customizable Maps

Analysis Tools



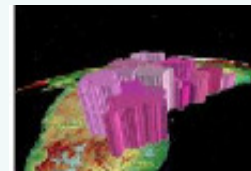
Multi-layer data analysis

Data Visualization Tools



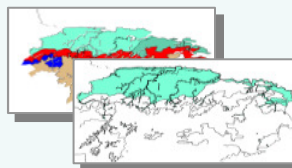
Graphs and figures for visual perception

3D Display



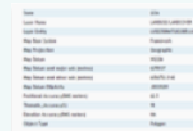
Advanced features like Terrain view, fly through and measurements over terrain

Query and Discovery Tools



Ability to perform advance searches

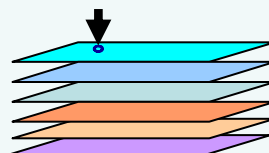
Metadata / Info Tools



Name	Date	Description
Water Resources Information System	2010-01-01	Water Resources Information System
Water Resources Information System	2010-01-01	Water Resources Information System
Water Resources Information System	2010-01-01	Water Resources Information System
Water Resources Information System	2010-01-01	Water Resources Information System
Water Resources Information System	2010-01-01	Water Resources Information System
Water Resources Information System	2010-01-01	Water Resources Information System
Water Resources Information System	2010-01-01	Water Resources Information System
Water Resources Information System	2010-01-01	Water Resources Information System
Water Resources Information System	2010-01-01	Water Resources Information System
Water Resources Information System	2010-01-01	Water Resources Information System

Directory of projects, their works and outcomes

Contextual Tools



Vertical & horizontal context characteristics

Reporting Tools



Standard and customizable reports for selected areas, time periods and subjects

Space-based Information Support for Decentralized Planning (SIS-DP)

Planning at Grassroots Level
(Geospatial Tech. as enabler)

GeoICT Operational Solutions
(Convergence of RS + GIS + GPS + IT)

Multi Model Dissemination
(Web, Standalone, Atlas)

Single State Level Repository
(Easy Updation, Maintenance)

Local Language Interface

Single Window
(Quick Decision Making)

All information in Consistent Framework

Inclusive Approach
(Lead by State along with Panchayat Raj, SRSAC, Partners, Knowledge Centres)

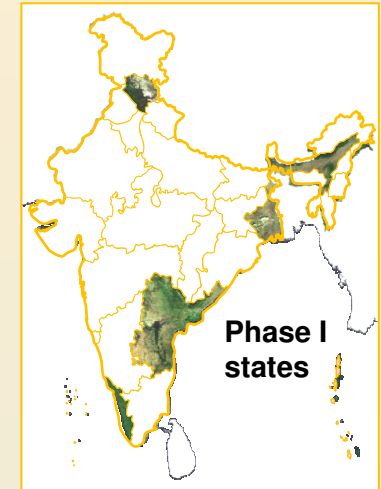
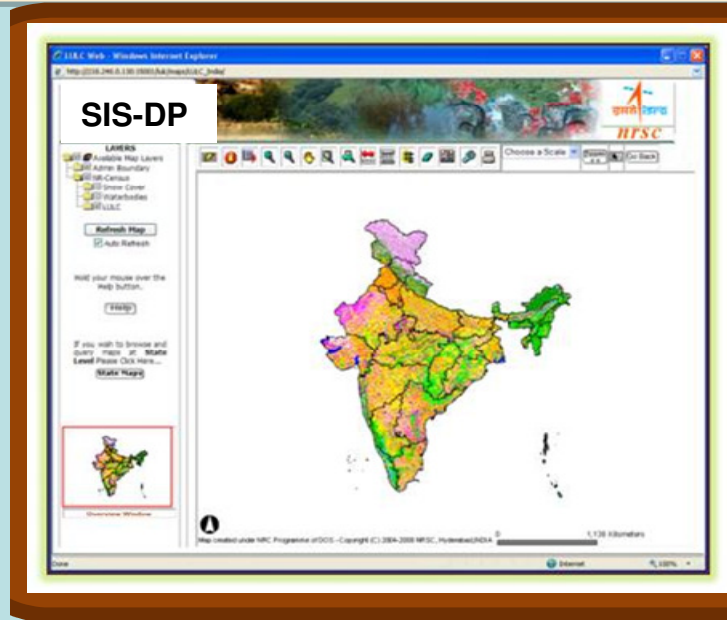


Space-based Information Support for Decentralized Planning (SIS-DP)

ICT enabled geospatial platform using space based data for planning & carrying out developmental activities in a decentralized and speedy manner involving local bodies

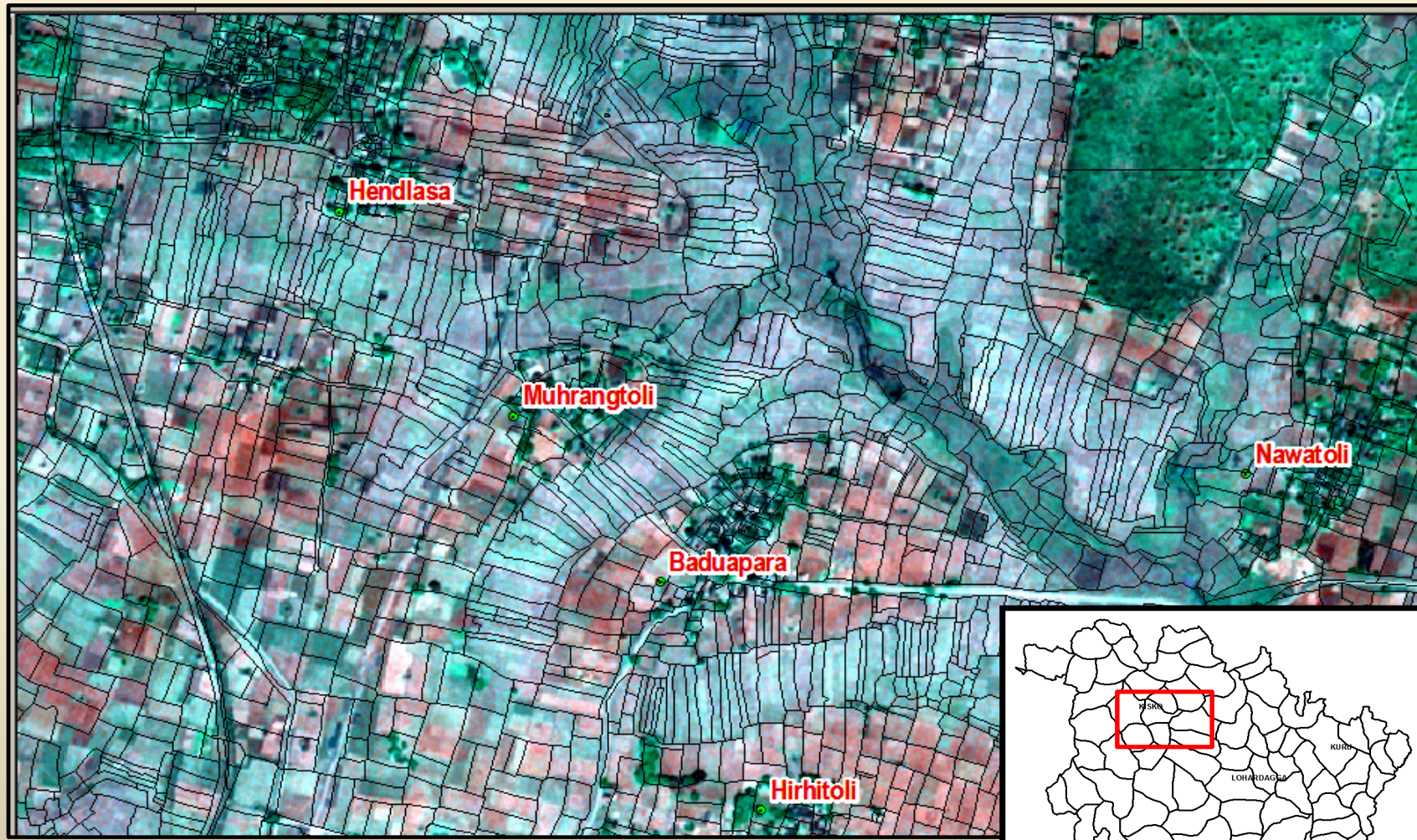
Objectives

- Mapping at 1:10k scale
- Integrating with existing database
- Linking stake holding departments data,
- Development of information system for the state/ district towards developmental plan preparation
- Capacity building



Space-based Information Support for Decentralized Planning (SIS-DP)

Cadastral overlay on Cartosat – 1 Pan and LISS-IV Mx merged imagery
- Natural Colour Compsite



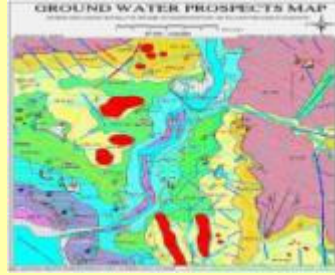
LOHARDAGA DISTRICT, JHARKHAND STATE

Application Projects in Diversified areas

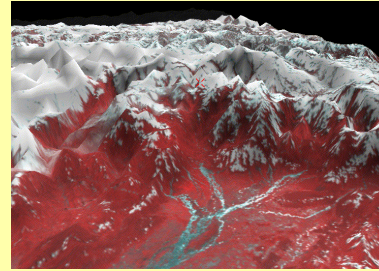
Agriculture



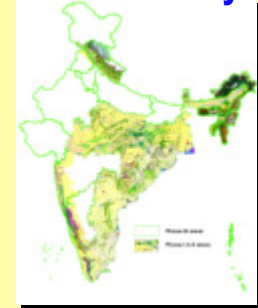
Drinking Water



Snow & Glaciers



Biodiversity



Coastal Studies



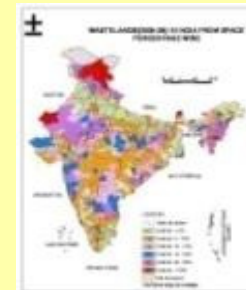
Watershed Dev.



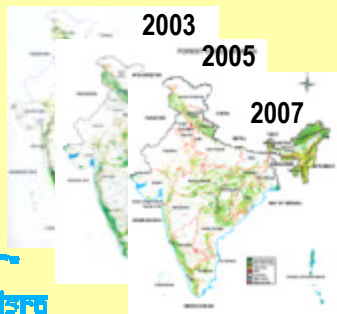
Urban Info. System



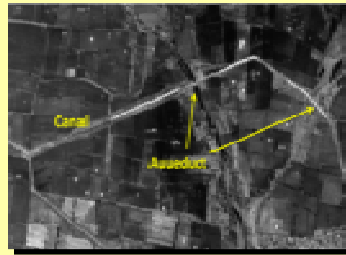
Wasteland Monitoring



Forestry



Monitoring Irrigation Infrastructure



**Thank you for your
kind Attention**