

Creating a dialogue platform between space and NGOs to enhance sustainable development: the case of Change Onlus in Madagascar



Graz, Austria, 03-07 September 2017

United Nations/Austria Symposium on:

"Access to Space: Holistic Capacity-Building for the 21st Century"

Isabella Mazza



ESPI dialogue platform with NGOs



European Space Policy Institute Space for Sustainable Development Report 59, June 2016

Participants:

- ESA, CNES, UNOOSA
- Médecins Sans Frontières, SOS Children Villages, Change Onlus
- Development Seeds, Erste Bank
- University of Salzburg



Local perspective

Change Onlus NGO

- 2005 born in Milan, Italy. Official N.G.O.
- Operates in Madagascar in the medical field
- 100 volunteers + 30 locally recruited staff
- Orientation: Charitable & Service
- Level of Operation: Community Based Organization (C.B.O.)
- Cooperative partnership with italian, local and international NGOs and local hospitals, universities and institutions

Local Missions

- **Medical center in Sakatia**
 - Beneficiaries: 1'200 people
 - Operational since: 2008
 - Health programs
- **Hospital in Ampefy**
 - Beneficiaries: 45'000 people (up to 700'000 for surgery)
 - Operational since: 2014
 - Social, educational, nutritional, health programs

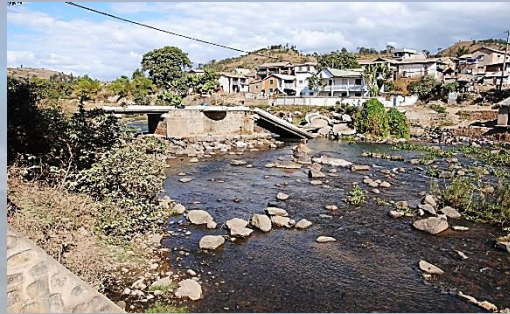


Encountered problems

Environment

Hydrogeological risk

Cyclone risk



Bridge collapse after flooding – Ampefy



Cyclone – 8/11/2015 – Ampefy Hospital

Energy

Power outage



© Madagascar Matin

Frequent illegal electricity connections

Health & Food

Schistosomiasis

Locust Invasion



Women washing clothes – Itasy lake

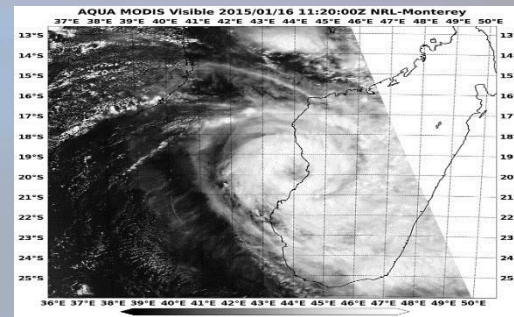
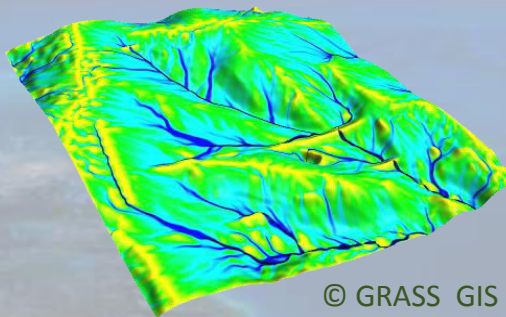


Locust swarm – 24/04/2014 – Ampefy

Can Space play a role?

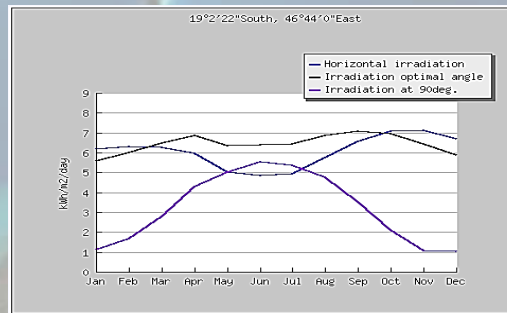
Environment

- Water flow monitoring
- Warning tools
- Weather forecasts



Energy

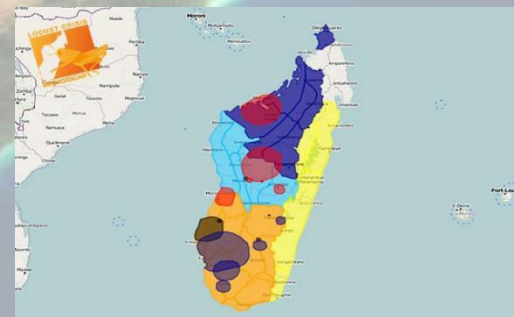
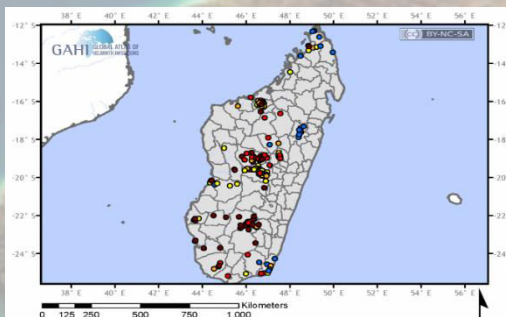
- Renewable energy potential



PVGIS © European Communities

Health & Food

- Tele-epidemiology
- Locust monitoring and forecasting



Space as an enabler

Space services VS terrestrial infrastructures

- Telecommunication → connectivity
- Earth Observation → remote measurements
- Navigation → positioning & tracking



Ability to make distance irrelevant

Integrated innovative services

- e-health
- tele-education



ESPI dialogue platform outcomes

- Importance to listen to the **actual needs** (e.g. **new service design**)
- Space-based solutions are the most **cost effective**? (e.g. creation of **helpdesk**)
- Local **potential** of space (e.g. **local actors** involvement)
- **Integration** – use the existing infrastructure (e.g. new **holistic programs**)

Recommendations

*“Local needs and requirements can normally be identified and satisfied much better by local actors, and sustainable fulfilment of sustainable development needs will clearly require **local involvement**.” – ESPI report 59, June 2016*

Stakeholders engagement

- Working Groups
- Forums at local & international level
- Society – outreach & education

**Contribute, share
needs, experience,
know-how**

Bottom-up perspective

- Easy access to knowledge network & scientific know-how
- Collect inputs from different actors
- Funding channels

UNOOSA

- Coordination & advisory function
- Optional Programs structure
- Space incubators for local economic development



Conclusions

- Achieving the SDGs is mainly a question **collective will**
- Bottom-up perspective: listen closely to the voice of the ones on the field
- Space services are **enablers**
- Space as **catalyst**, NGOs away from isolation, local economy development
- Capacity-building
 - facilitate **information exchange** and **dialogue**
 - expand the tool box for **practical** cooperation

Acknowledgements

UNOOSA and participants to ESPI dialogue platform

«Sustainable development: challenges and opportunities for Space in listening to the field»

ESPI report 59, June 2016

«Space for Sustainable Development»


available [here](#)

Thank you!



About

www.change-onlus.org

 @ChangeOnlus

 Change Onlus

Contacts

info@change-onlus.org

i.mazza@change-onlus.org

