



**INNOVATION  
ACCELERATOR**

# WFP Innovation Accelerator

## From Space to Field: WFP Innovations for Zero Hunger

### UN/AUSTRIA SYMPOSIUM: "Space Applications for Food Systems"

7 September 2021

**#disrupthunger**



**@WFPInnovation**



**WFP Innovation Accelerator**

**@Hila\_co**





World Food Programme

SAVING LIVES  
CHANGING LIVES

WFP is  
saving lives,  
changing lives

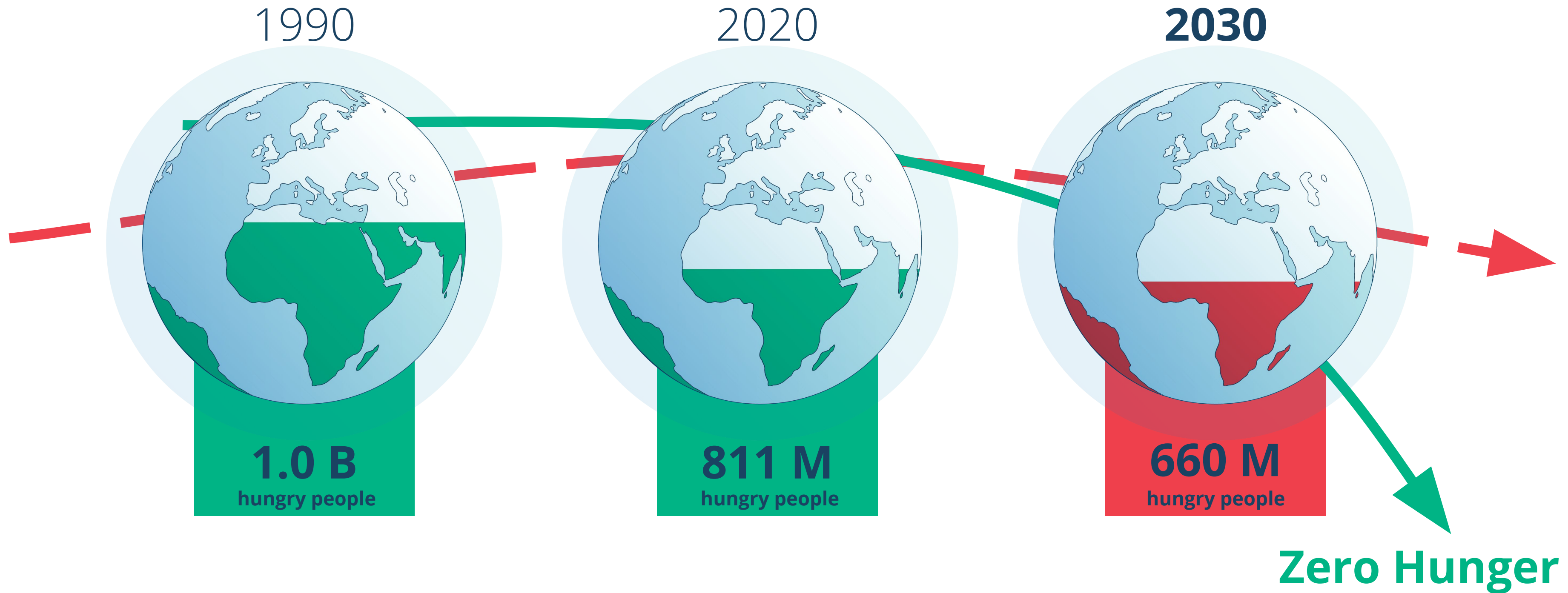


World Food Programme





# We need to close the gap to Zero Hunger





The **WFP Innovation Accelerator** sources, supports and scales high-impact innovations to disrupt hunger.



Federal Ministry  
for Economic Cooperation  
and Development



Federal Foreign Office

Bavarian State Ministry  
of Food, Agriculture and Forestry



Government of the Netherlands



**USAID**  
FROM THE AMERICAN PEOPLE

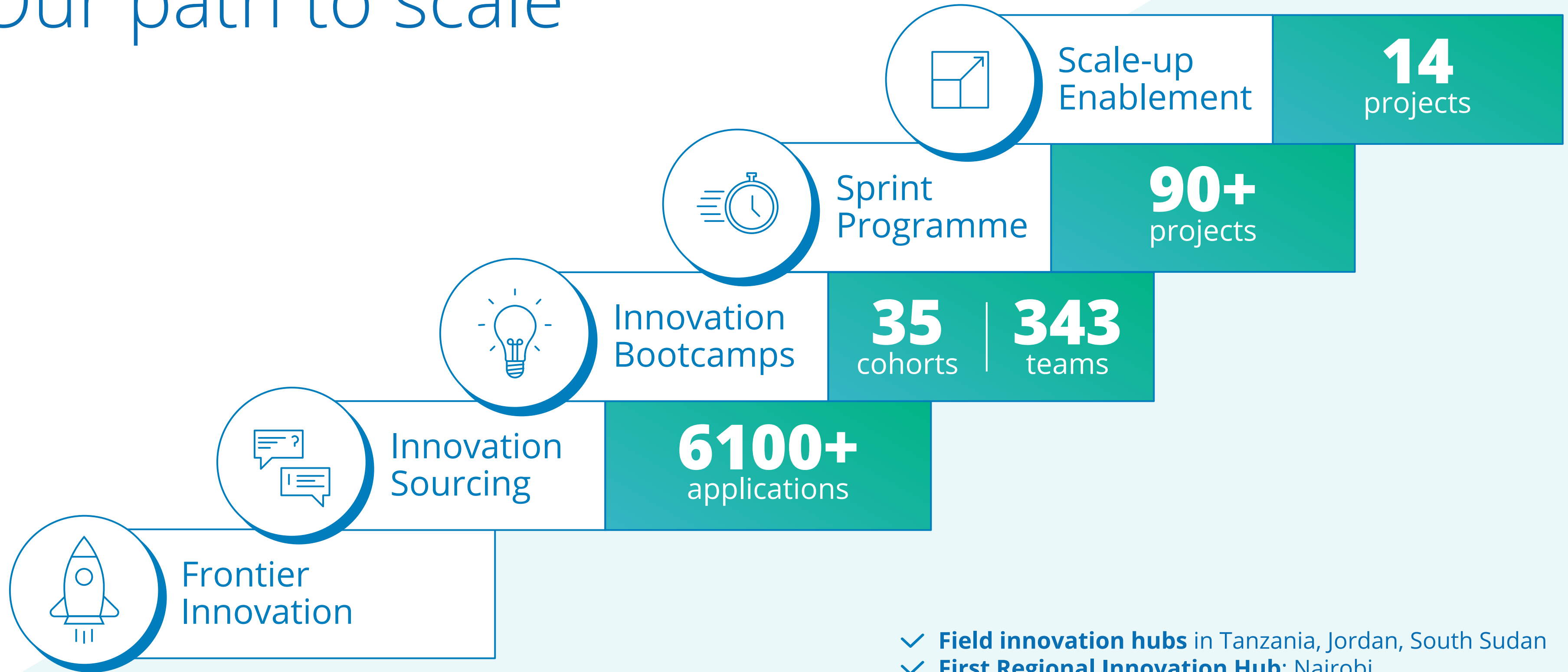


THE GOVERNMENT  
OF THE GRAND DUCHY OF LUXEMBOURG  
Ministry of Foreign and European Affairs

Directorate for Development Cooperation  
and Humanitarian Affairs



# Our path to scale



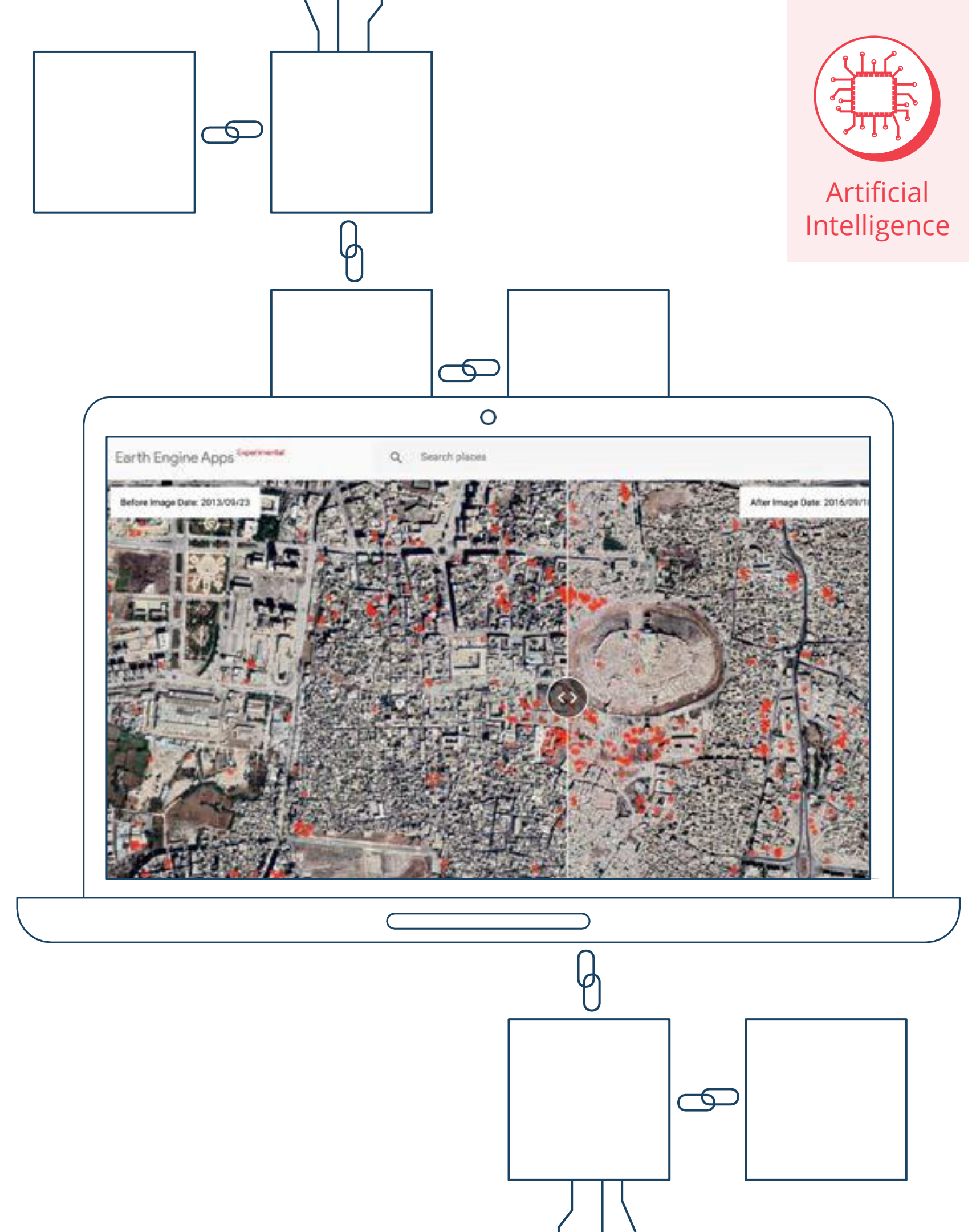
- ✓ **Field innovation hubs** in Tanzania, Jordan, South Sudan
- ✓ **First Regional Innovation Hub:** Nairobi
- ✓ **Full programme virtual**

# SKAI

A lack of on-the-ground information at the start of a humanitarian crisis is a major obstacle to a quick, effective response.

In collaboration with **Google AI**, SKAI uses AI to analyze satellite images to automatically assess damage post disasters. It drastically speeds up the process of extracting insights from the ground, and enables speedy and accurate emergency response.

SKAI was **utilized by WFP to conduct a damage assessment of the August 2020 Beirut explosion, Ethiopia Tigray Conflict, and Fiji Cyclone Ana**. SKAI is also now being integrated into WFP's GIS toolkits.





# Cloud to Street


Ghana | The Gambia | Republic of the Congo | Sri Lanka

**Cloud to Street is a remote sensing platform to predict, map and analyze floods in real time.**

By using global satellite imagery and cloud computing, it analyses flooding on the ground and continuously estimates flood probabilities. As the platform is remote and automated, the maps and analytics are affordable, fast, and accessible for governments and aid agencies left off of traditional maps.

In 2020, Cloud to Street identified over **23,500 km<sup>2</sup>** of flood-prone land, helping protect **1.2 million people** at risk or impacted by a major flood event.

 **16,000**  
people received  
WFP cash vouchers

 Enabled  
**US\$ 13.5 million**  
in multilateral aid for  
flood-affected communities



**INNOVATION  
ACCELERATOR**



# PRISM

Cambodia | Indonesia | Sri Lanka | Mongolia

**PRISM tracks the impact of major climate events in order to design risk reduction activities and target disaster responses.** By bringing different data streams into a single interactive map, PRISM shows the extent of damage on drought-affected areas, the impacts on markets and the coping strategies and resilience of affected populations.

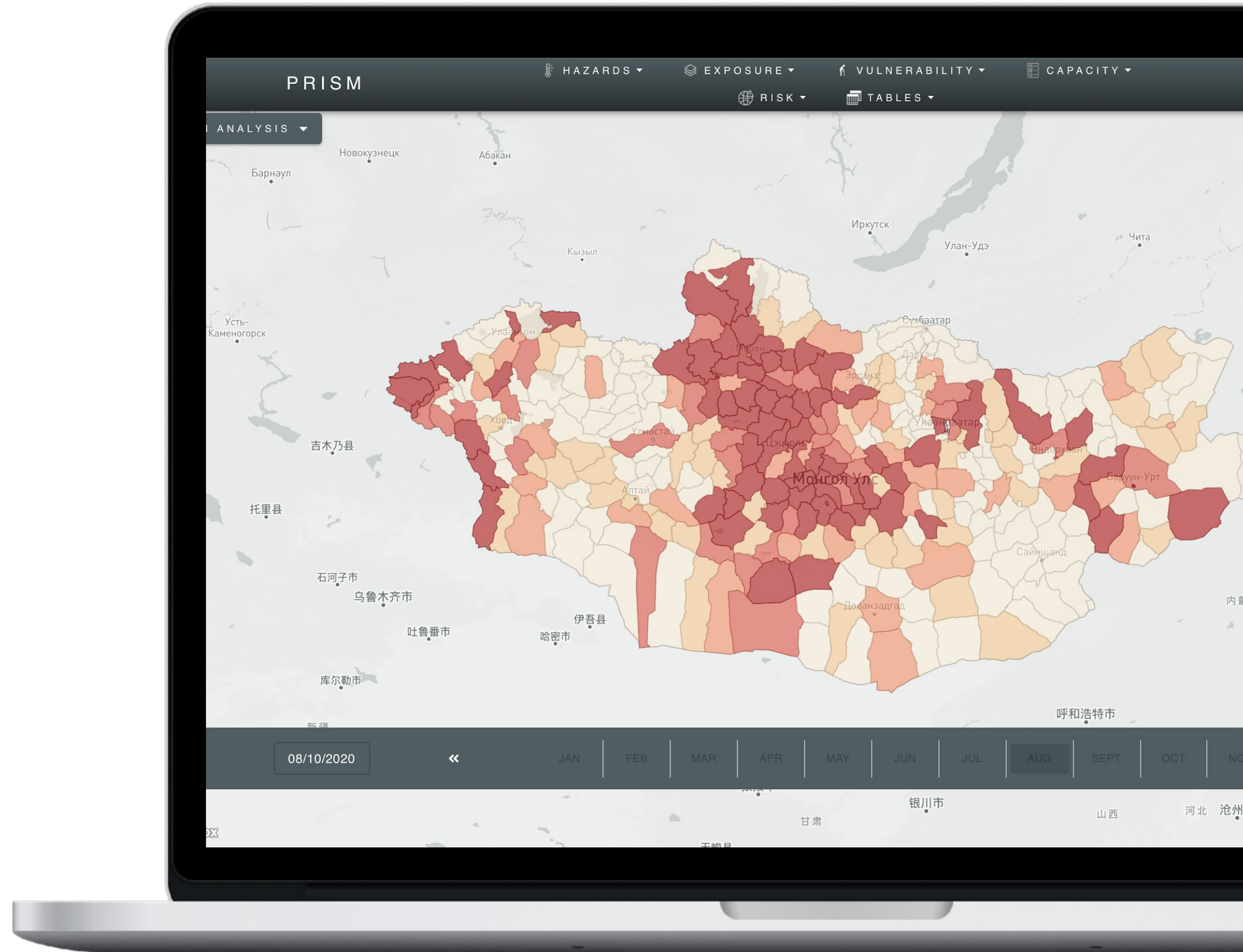
PRISM grew from **Indonesia** and **Cambodia**, to an **Asia-Pacific regional initiative**, to a ready-to-scale platform led by WFP headquarters.

 **388,392**  
people reached

 Launched in  
**Mongolia**  
in May 2020



**INNOVATION  
ACCELERATOR**





It's time to  
***#disrupt*hunger.**

 [innovation.wfp.org](https://innovation.wfp.org)

 [global.innovation@wfp.org](mailto:global.innovation@wfp.org)

 [@WFPInnovation](https://twitter.com/WFPInnovation)  
[@Hila\\_Co](https://twitter.com/Hila_Co)

 [WFP Innovation Accelerator](https://www.linkedin.com/company/wfp-innovation-accelerator)