



**Location  
Innovation  
Hub**



# Positioning technologies and Location Innovation HUB

Antti Jakobsson

United Nations/Finland Workshop on the Applications of Global Navigation Satellite  
Systems

Helsinki 25<sup>th</sup> October 2023

**EDIH**

European  
Digital Innovation  
Hubs Network



Co-funded by  
the European Union



# What we are? Creating Location Intelligence

- Services we offer: Consultation, Training, Testing infrastructure, Tools and Funding guidance on location technology
- Both for businesses and public sector
- Focus on four different themes:
  - Built Environment
  - Bioeconomy
  - Health and Wellbeing
  - Transportation and Logistics
- Three key technology sectors: AI and ML, High Performance Computing, and Cybersecurity.
- Coordinated by Finnish Geospatial Research Institute with a partner network.



# Location Innovation Hub as a part of EDIH-network



- European Digital Innovation Hubs (EDIHs) are part of the EU's new Digital Europe Programme.
- Function as service points that boost digital investment and, in particular, the digitalization of SMEs.
- European not-for-profit actors
- Operation period 2023-2025 + possible extension for 4 years
- More information: <https://digital-strategy.ec.europa.eu/en/activities/edihs>



More than **150** EDIHs around Europe



**321 million euros** funding for the EDIHs



**4 Finnish EDIHs** (LIH, Finnish AI Region, Health Hub Finland ja Robocoast)



## Value is created together



10 business partners

15 universities, public organizations, and associations

22 associated partners

## Knowledge transfer and services



7 reference data spaces

200 spatial data services

600 data sets

5 novel sensor data sets

50 000 potential location data services available through European Data Portal

## Themes we are focusing on



Built Environment

Bioeconomy

Health and Wellbeing

Transportation and Logistics

## GIS business accelerators



- Interoperability of location and other data
- Next generation navigation space
- Precise positioning



## Indoor navigation



## Drone tracking

## Public safety

## Geofencing

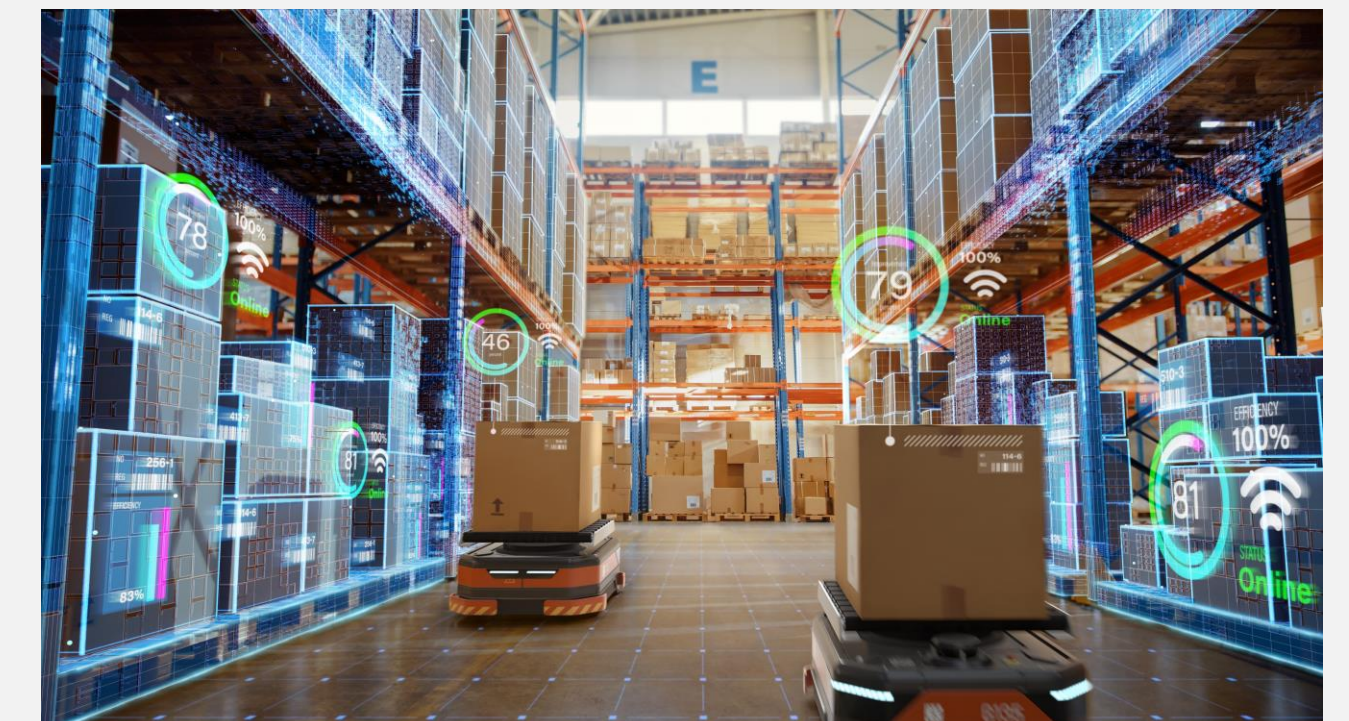


## Asset tracking

## Navigation

## Fleet management

## AGV tracking



[Search Engine Land](#) » [SEO](#) » [Local](#) » [Google Bard now can use your device's precise location for more relevant local results](#)

# Google Bard now can use your device's precise location for more relevant local results

To enable this, manage your preferences in location settings.

Barry Schwartz on June 1, 2023 at 9:11 pm | Reading time: 2 minutes



Google Bard can now use your device's precise location to provide better local results to your questions. When you go to Google Bard, a popup dialog may show up that reads "To get more relevant responses, you can also choose to let Bard use your device's precise location."

The notice. Here is what you might see when you access [bard.google.com](https://bard.google.com):



# Potential of positioning in our focus areas

- Interoperability of location and other data
  - Need of accurate location data
  - Knowledge of reference systems for example building industry
  - Use of accurate data as positioning reference
- Next generation navigation space
  - Combining outdoor and indoor positioning
- Precise positioning
  - All our focus areas
  - Robotics
  - Ports and other industrial areas
  - Weather
  - Mobility

## Example companies working on this

- Koherent <https://koherent.io/> Millimeter-precise positioning used in for example ports, smart factories, or self-driving vehicles
- Skyfora <https://www.skyfora.com/> Next generation weather intelligence utilizing precise positioning
- Risutec <https://risutec.fi/fi/> High accuracy positioning in precise forestry applications
- GIM Robotics <https://gimrobotics.fi/> Universal 3D mapping and localization solutions for autonomous driving
- Kuva Space <https://kuvaspace.com/> Earth observation through hyperspectral imaging
- Wirepas <https://www.wirepas.com/> 5G Mesh Asset tracking
- Haltian <https://haltian.com/> Asset tracking
- Septentrio <https://www.septentrio.com/en> GNSS receivers
- HERE <https://www.here.com/platform/positioning> Automated driving, fleet management, asset tracking, indoor positioning
- DIGIRAIL <https://digirata.fi/en/>
- Awake.ai <https://awake.ai> Port situational awareness
- 
-

- Open House concept
- GeoMob Finland
- Webinars and other events
- Positio-magazine and newsletter

Discovery of strategic challenges and business opportunities

- Testing infrastructure
- Training
- Developer consultancy
- Reference data spaces and AI solutions



- Co-creation through challenges and Location Innovation Programme
- Other networks
- Business consultancy



# Key outcomes expected

## Data spaces

Work on reference data spaces to establish the link between geodata and other data. Seeking funding for these both in Finland and in Europe.

## Innovations

Work on creating new innovation and business in location data and services. Create European based solutions, for example Location API business manual. Data integration guidance.

## Test environments

Providing test before invest services: GeoE3 platform, next generation navigation space in Otaniemi, urban test environments, novel datasets and test areas.



# Location API business manual



Version 1.0 | March 2023

**Starter Kit for Data  
Space Designers**

Business models

Lifecycle management

## Global and national guidance

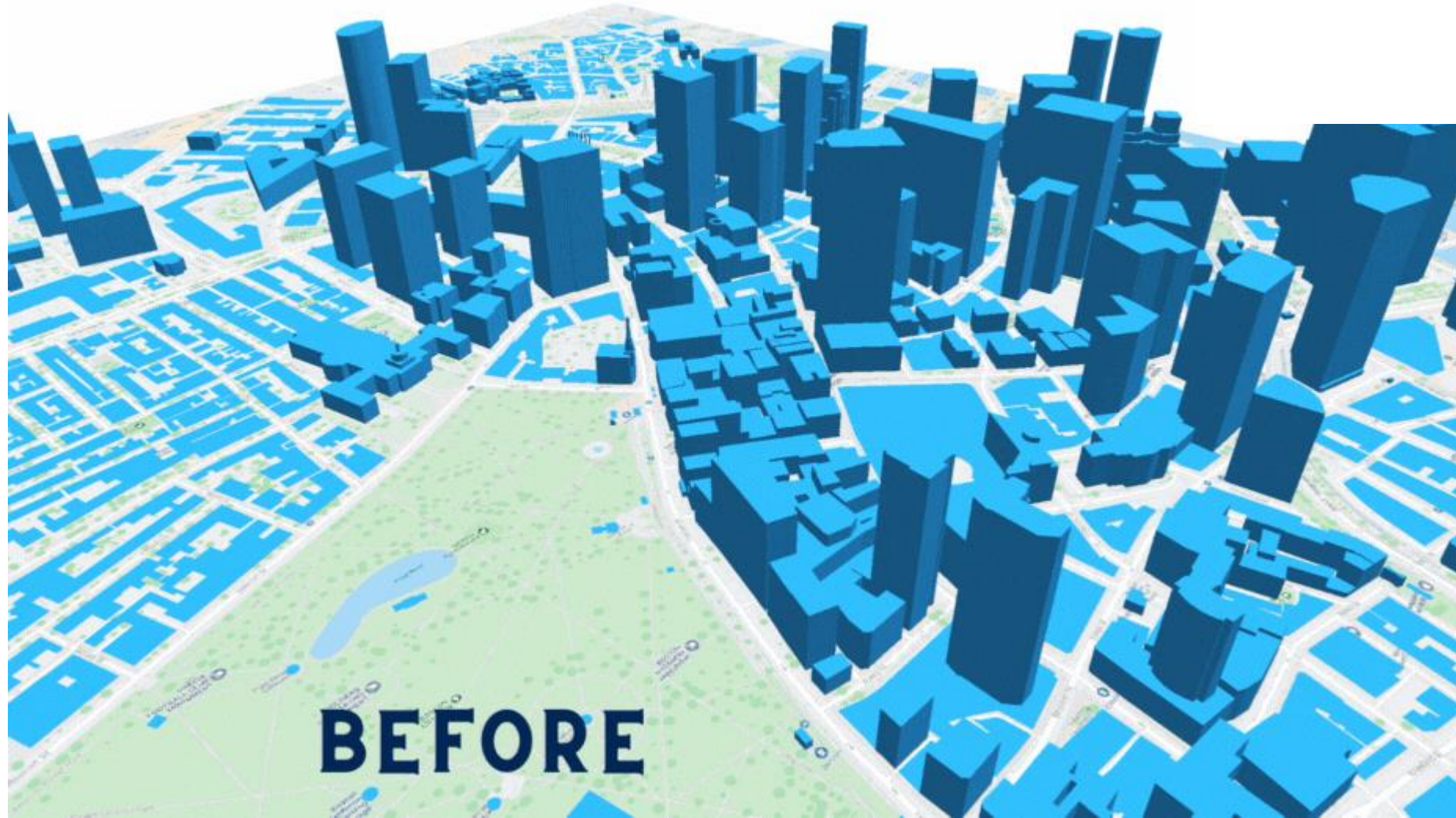


OVERTURE MAPS  
FOUNDATION

5G

Copyright and licenses

Ethical questions



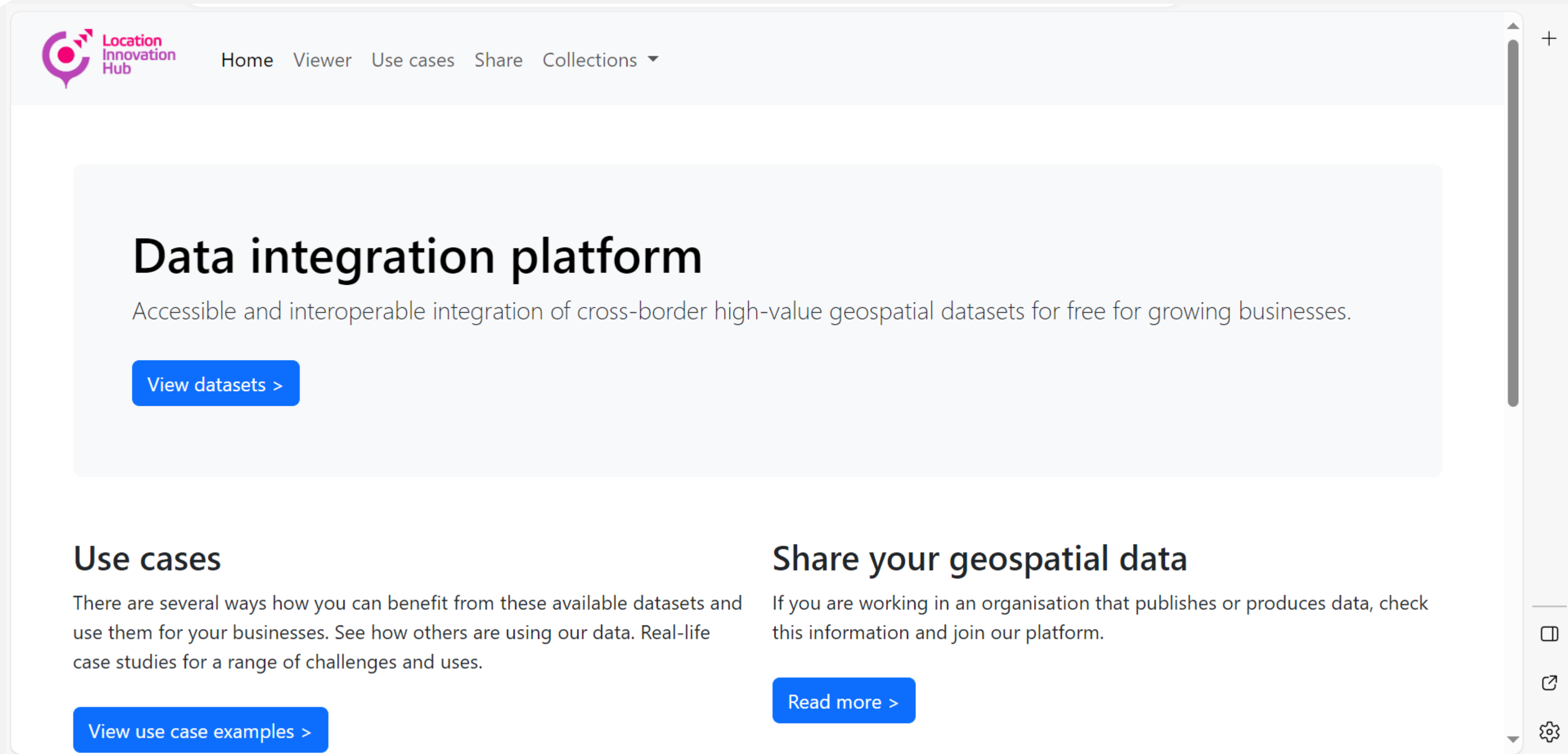
Security

Sensor APIs






Data integration platform available for test before invest type of service development



The screenshot shows the Location Innovation Hub website interface. At the top left is the logo. The navigation menu includes Home, Viewer, Use cases, Share, and Collections. The main content area features a large heading 'Data integration platform' with a subtext 'Accessible and interoperable integration of cross-border high-value geospatial datasets for free for growing businesses.' and a 'View datasets >' button. Below this are two columns: 'Use cases' with a 'View use case examples >' button, and 'Share your geospatial data' with a 'Read more >' button. A vertical scrollbar and a settings menu (plus, home, share, settings) are on the right.

 Home Viewer Use cases Share Collections ▾

## Data integration platform

Accessible and interoperable integration of cross-border high-value geospatial datasets for free for growing businesses.

[View datasets >](#)

### Use cases

There are several ways how you can benefit from these available datasets and use them for your businesses. See how others are using our data. Real-life case studies for a range of challenges and uses.

[View use case examples >](#)

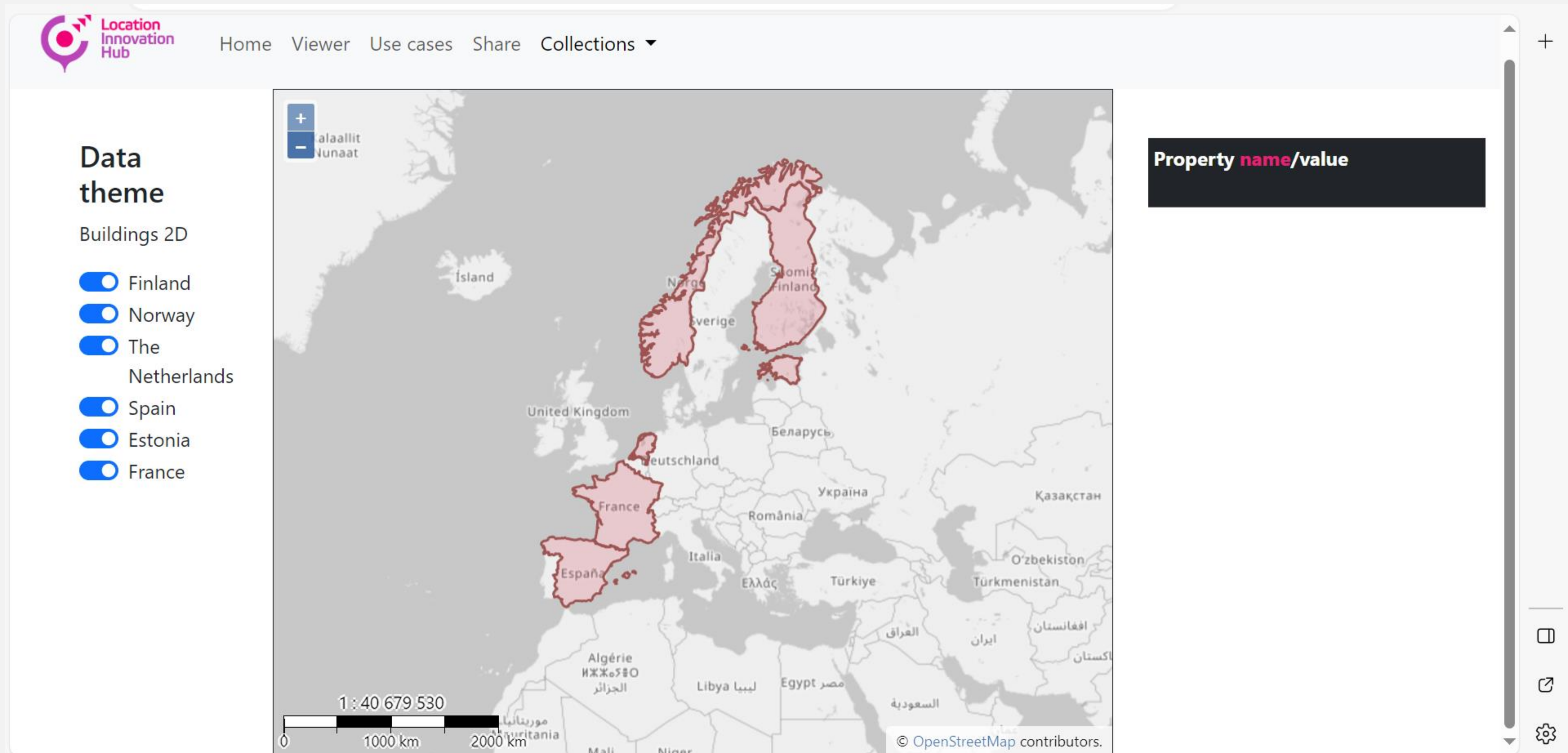
### Share your geospatial data

If you are working in an organisation that publishes or produces data, check this information and join our platform.

[Read more >](#)



## 3D LoD2 available in Finland, Netherlands, Estonia, other countries generated from 2D



The screenshot displays the Location Innovation Hub web application interface. At the top left is the logo and navigation menu with links for Home, Viewer, Use cases, Share, and Collections. The main content area features a map of Europe with several countries highlighted in red, indicating 3D LoD2 availability. A legend on the left, titled 'Data theme', lists 'Buildings 2D' with toggle switches for Finland, Norway, The Netherlands, Spain, Estonia, and France. A 'Property name/value' field is visible on the right. The map includes a scale bar (1:40 679 530) and a copyright notice for OpenStreetMap contributors.

Location Innovation Hub

Home Viewer Use cases Share Collections

Data theme

Buildings 2D

- Finland
- Norway
- The Netherlands
- Spain
- Estonia
- France

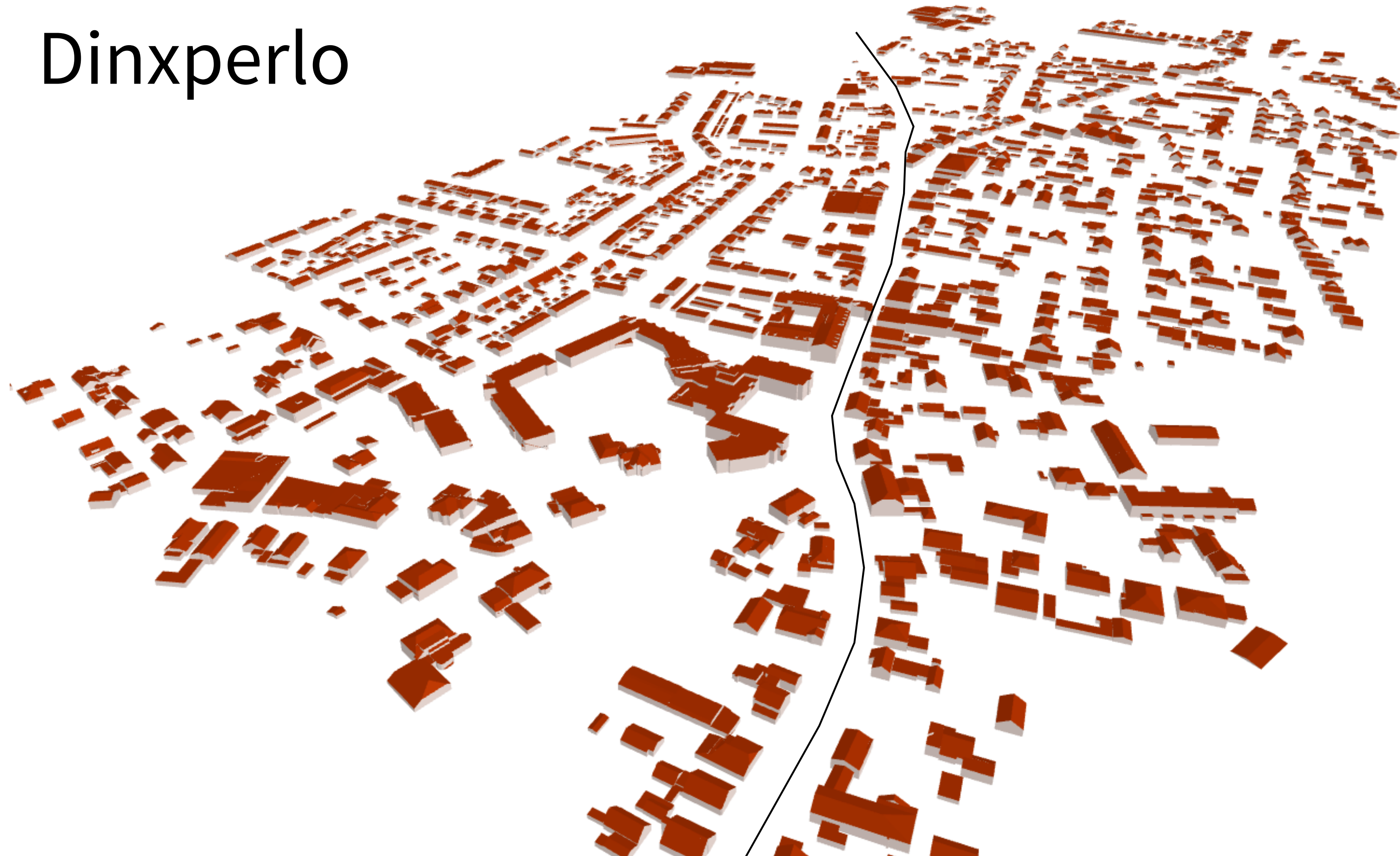
Property name/value

1:40 679 530

© OpenStreetMap contributors.



# The Netherlands Dinxperlo



Germany  
Suderwick



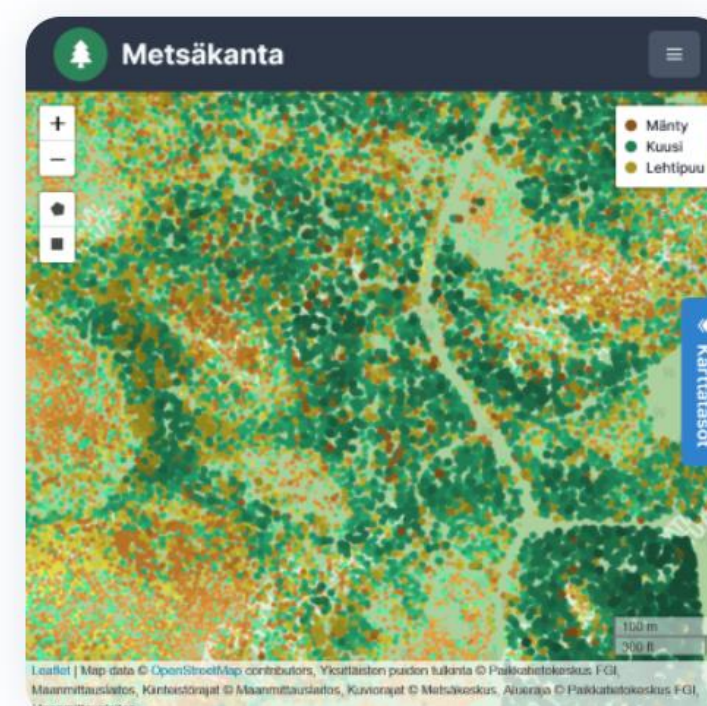
# Next Generation Navigation Space

Target: test environment for indoor navigation

Seamless experience indoor/outdoor  
Otaniemi, FGI premises

## Agri/Food test areas

## Forest test areas



## Urban test areas

Target: Digital Twins, Smart cities

## Visualisation environments

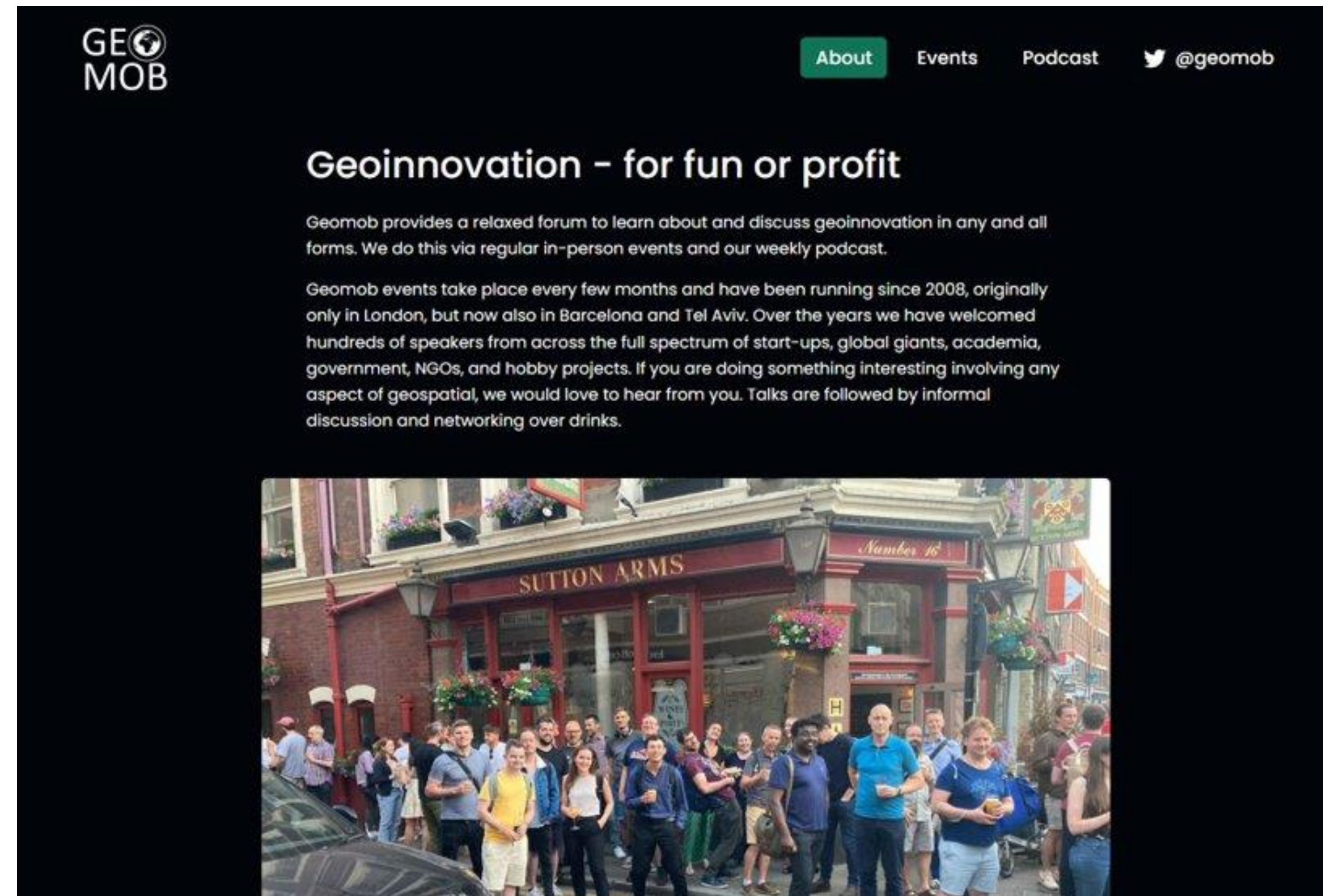
Target: Decision making, VR, AR



# Geomob Finland



Collective Crunch scalable forest inventories, tracking of forest health and biodiversity, and monitoring of carbon changes





# Funding and networks

EU Funding workshops

Business consultancy

Public sector network – Sectoral networks

Location Innovation Programme - challenges

# Training

Geospatial Challenge Camp – Health and well-being

September- December

# Development consultancy

Need a solution where location component is needed? We will help



# Open House





# Partners and Associated partners



# European core data provider network





# Contact the LIH office staff

- **Project administration:** Antti Jakobsson  
[antti.jakobsson@nls.fi](mailto:antti.jakobsson@nls.fi)
- **Networks, co-operation & customer success:** Joonas Jokela  
[joonas.jokela@nls.fi](mailto:joonas.jokela@nls.fi)
- **Technical support:** Faris Alshail  
[faris.alsuhail@nls.fi](mailto:faris.alsuhail@nls.fi)
- **Communication:** Anniina Lundvall  
[anniina.lundvall@nls.fi](mailto:anniina.lundvall@nls.fi) and Maria Vilppola  
[maria.vilppola@nls.fi](mailto:maria.vilppola@nls.fi)



[locationinnovationhub@nls.fi](mailto:locationinnovationhub@nls.fi)

locationinnovationhub.eu





**Location  
Innovation  
Hub**

**Thank you**

**WWW.  
locationinnovationhub.eu**

