



Space4Health

Rhiannan Price

Director, Sustainable Development Practice at Maxar Technologies

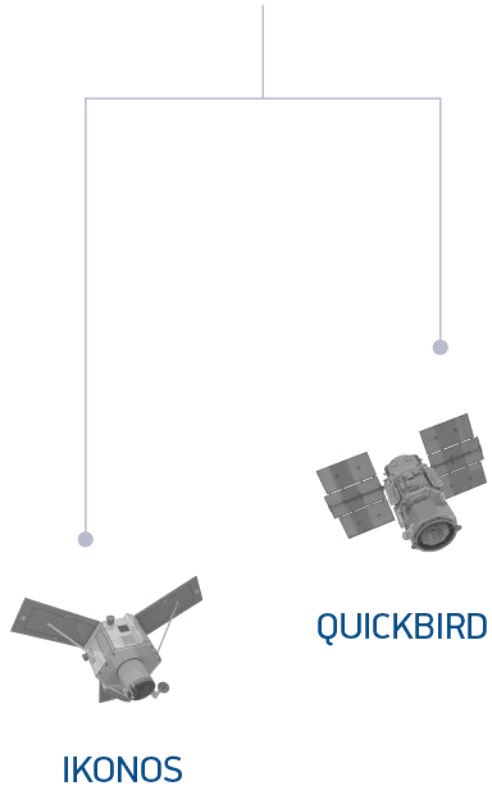


MAXAR

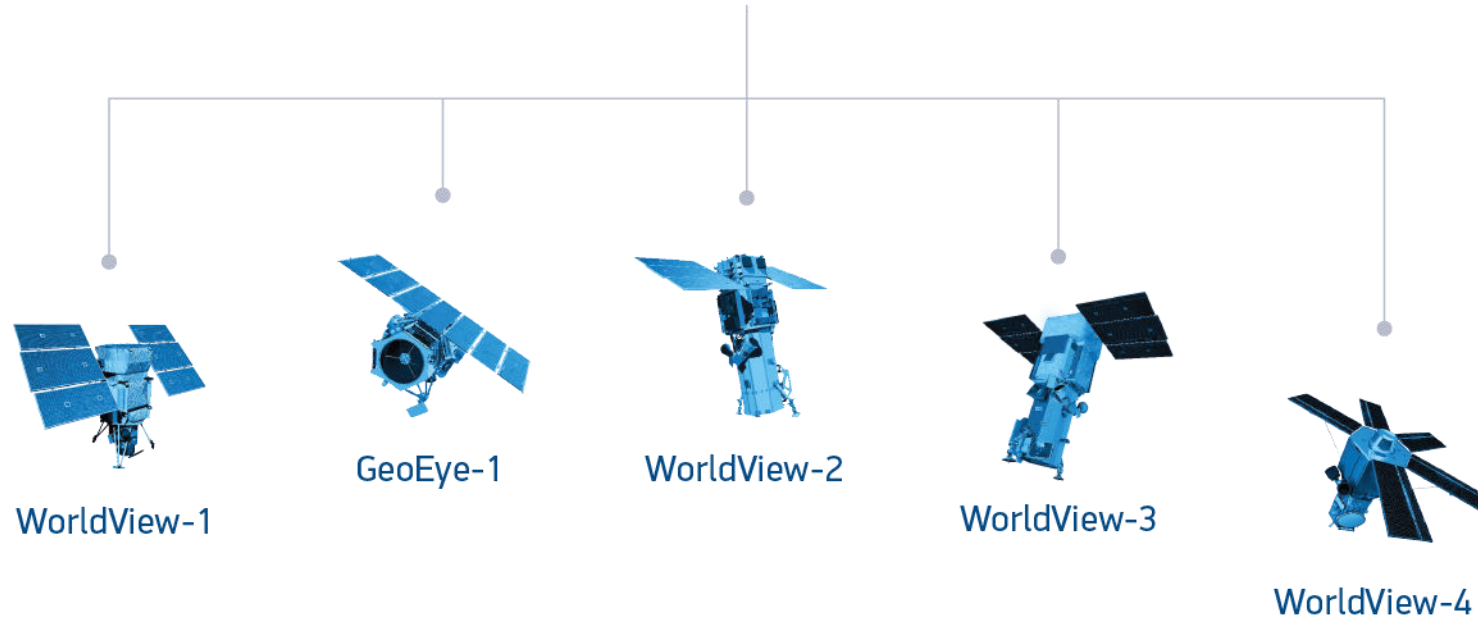


The world's most sophisticated Earth imaging constellation

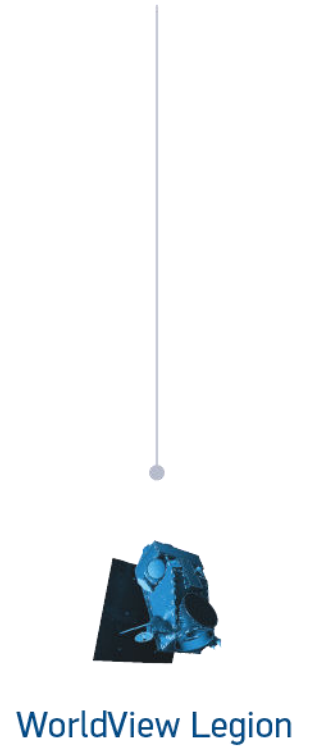
Decommissioned



Current



Future





SEE HEALTH



VHR Satellite Imagery can help us answer questions like:

Where are remote populations?

How do I reach them?

How quickly are populations growing?

Where are internally displaced persons and refugees?

What is community access to essential resources and services?

Where do I deploy resources and services?

How are communities changing over time?

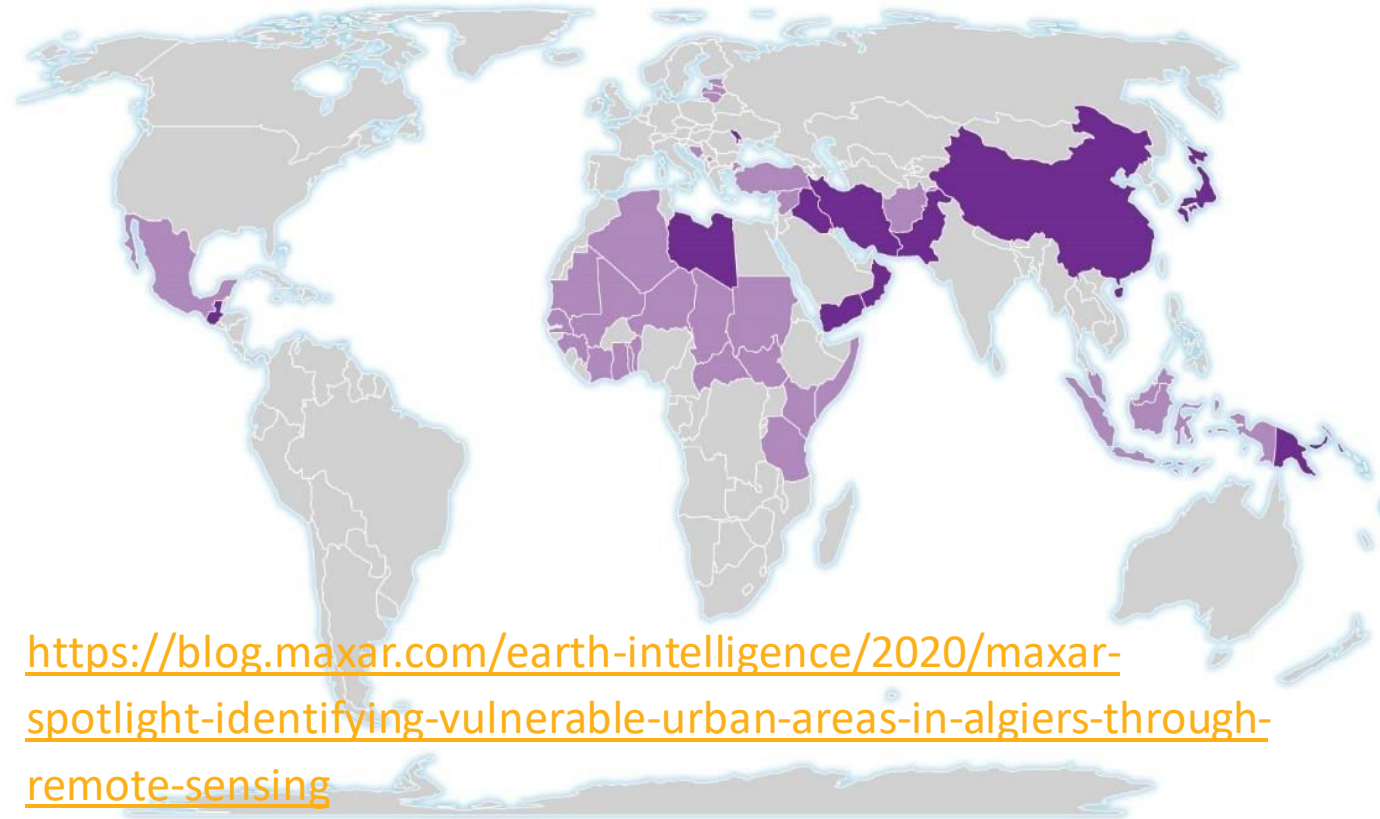
How are communities affected by crisis or disasters?

How resilient are communities to various shocks and stressors?



Mapping the Human Landscape

- multi-layered Human Landscape data that is valuable for disease and population modelling.
- include medical facilities, demographic details, tourist attractions, cultural points of interest, roads, public transport hubs, and water infrastructure.



<https://blog.maxar.com/earth-intelligence/2020/maxar-spotlight-identifying-vulnerable-urban-areas-in-algiers-through-remote-sensing>

Available Human Landscape Datasets

- Off the shelf: 1-5 day deliverable timeline*
- Quick turnaround: 1-2 week deliverable timeline

* Fujian, Hainan, Jilin, Liaoning & Zhejiang provinces in China



Open Data Program

- Current activation to support the COVID-19 response
- Imagery released for open, non-commercial purposes
- 23 different AOIs currently published and taking requests

<https://www.maxar.com/open-data>

