

General Organization of Remote sensing Activities Syria



Establishing Receiving Ground station





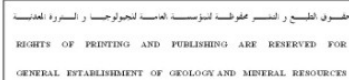




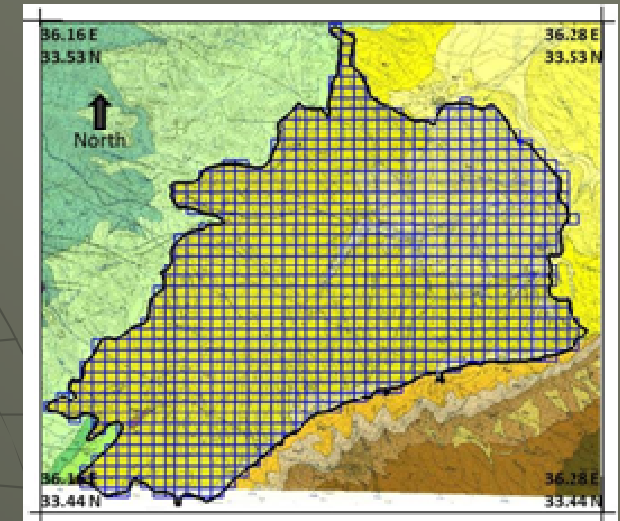
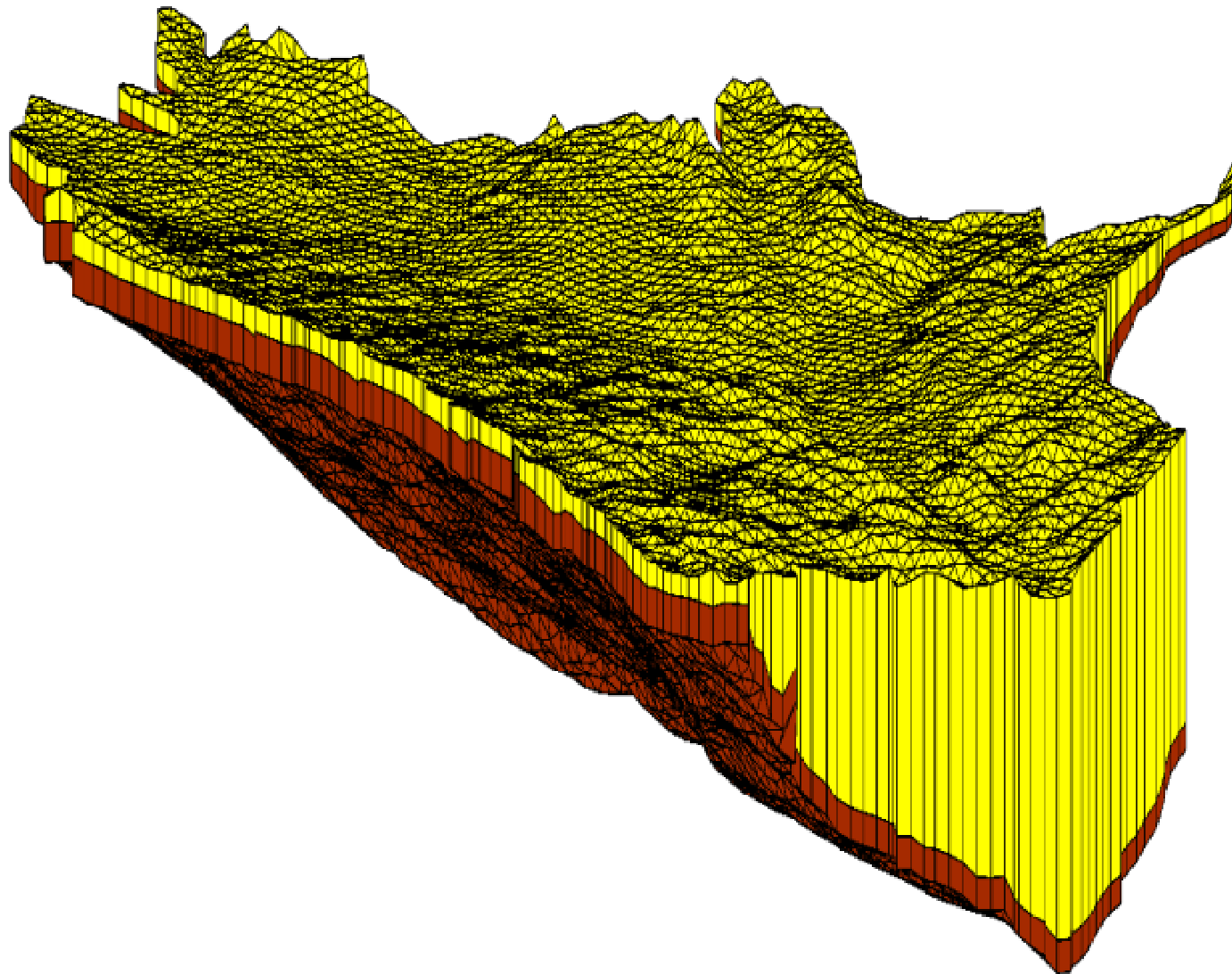




Some of the Projects and Research

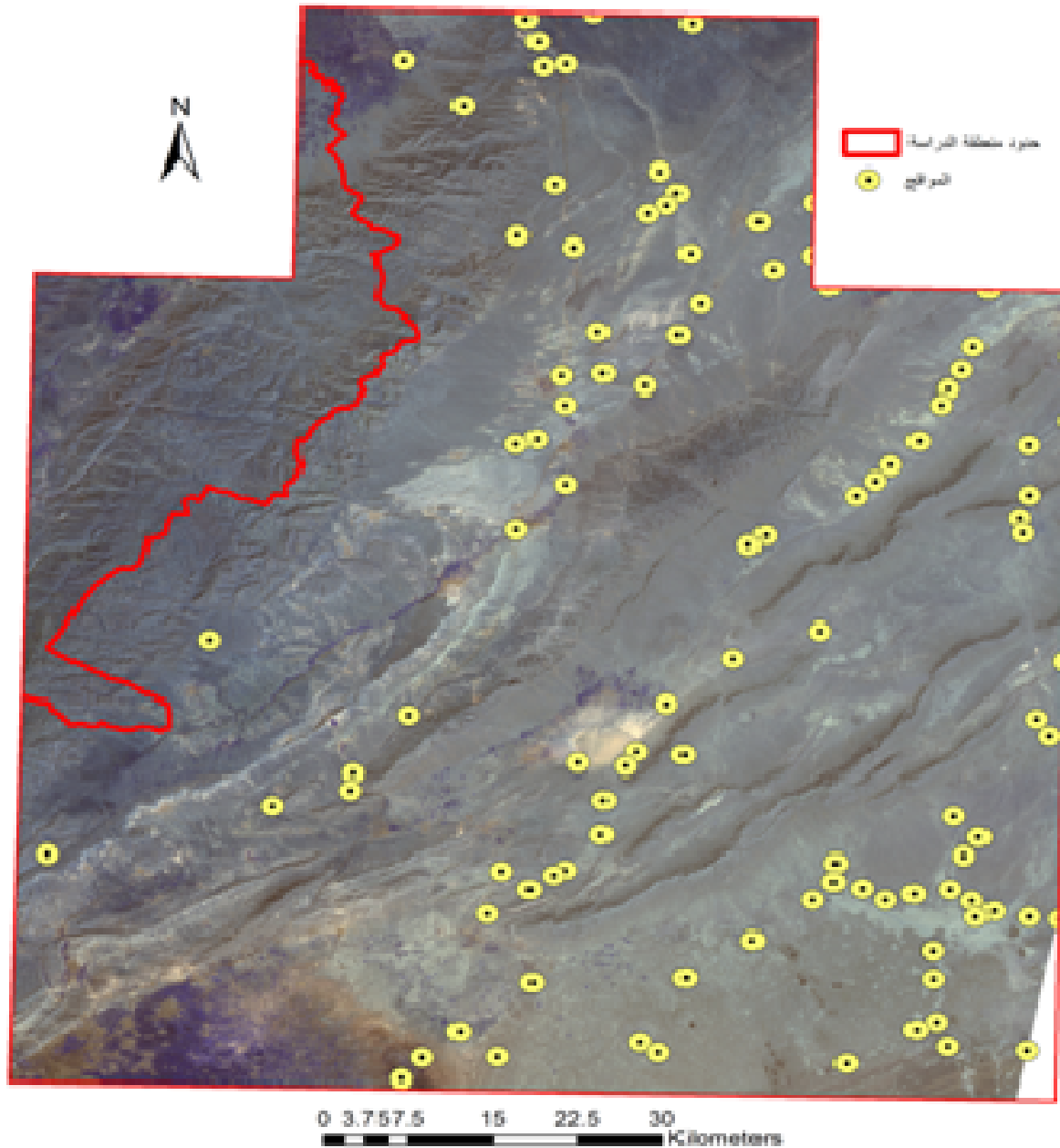


Estimating and developing of water resources in the south-western part of Qalamoun basin using Remote sensing, GIS and modeling techniques.

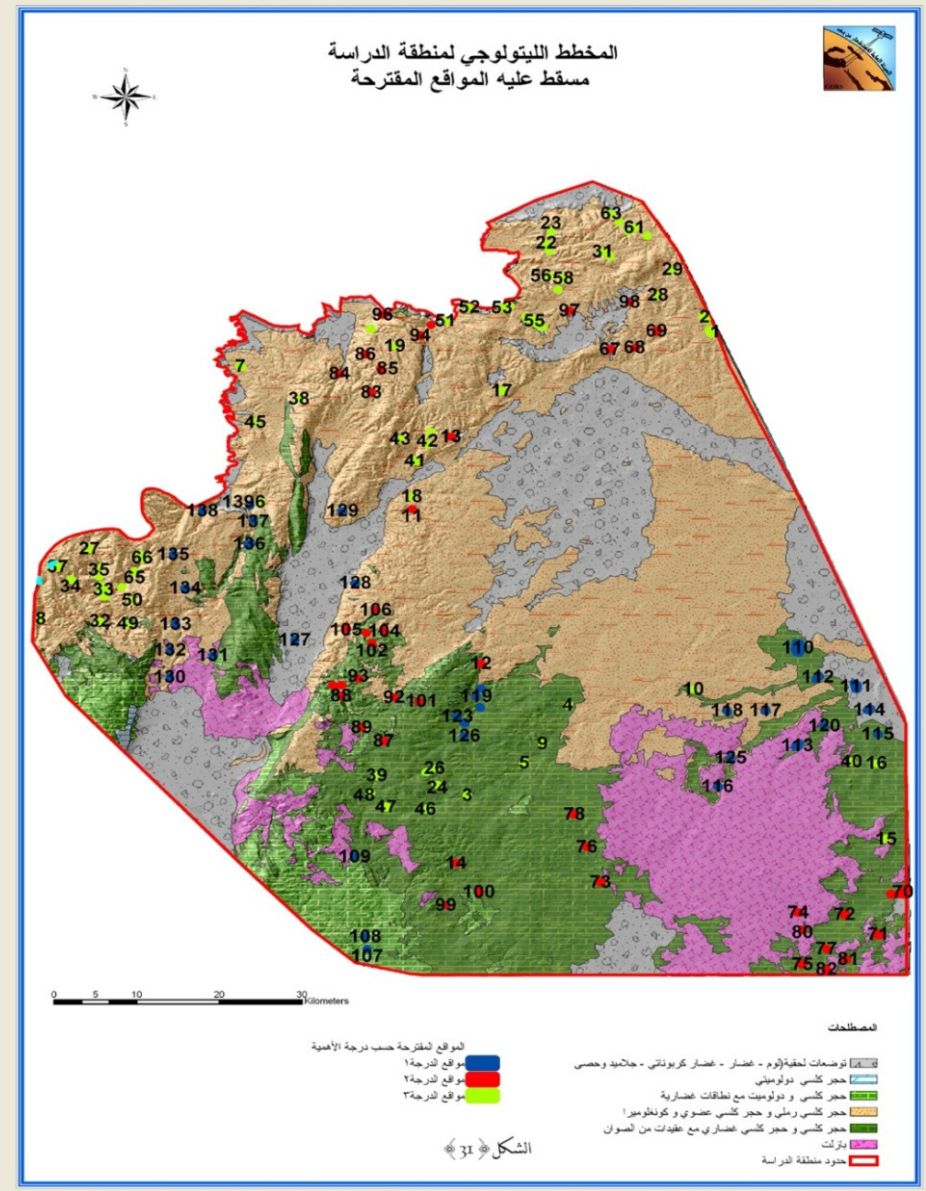
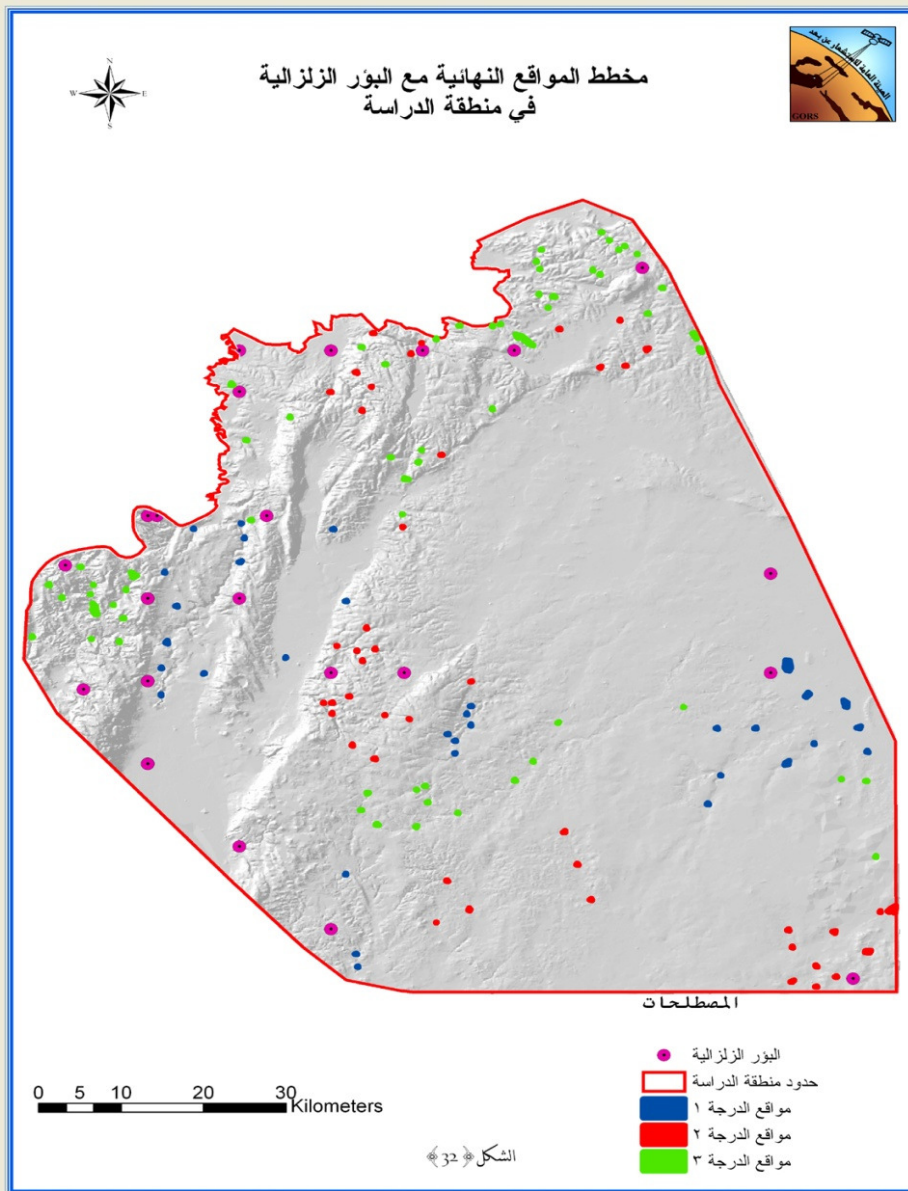




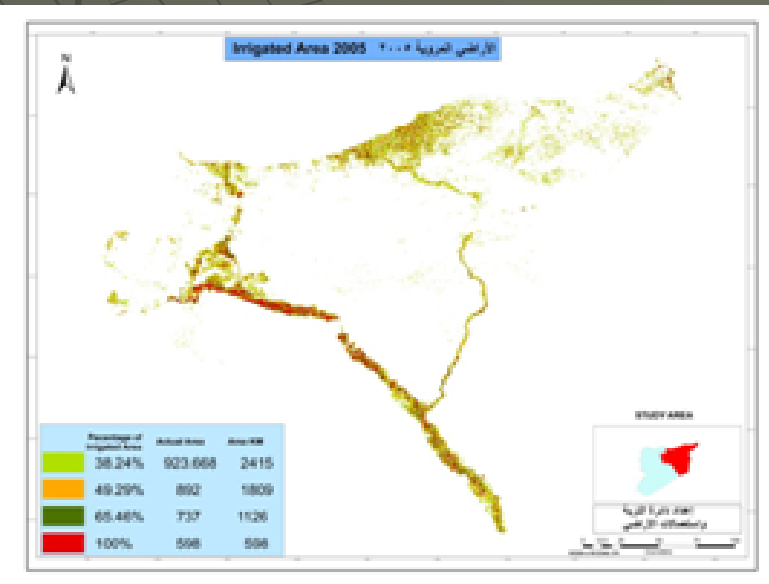
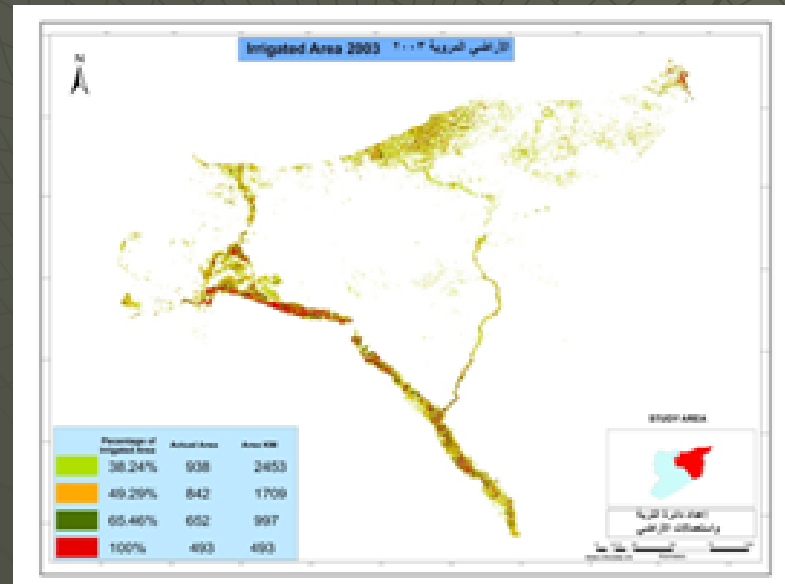
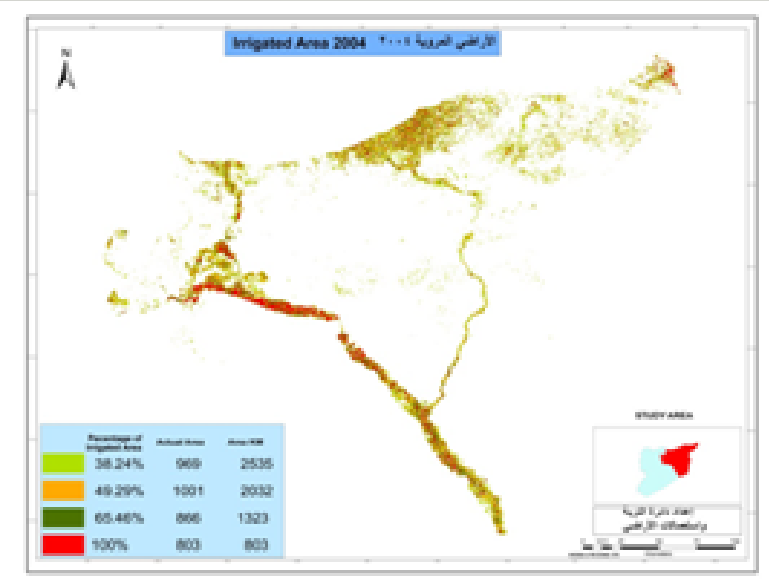
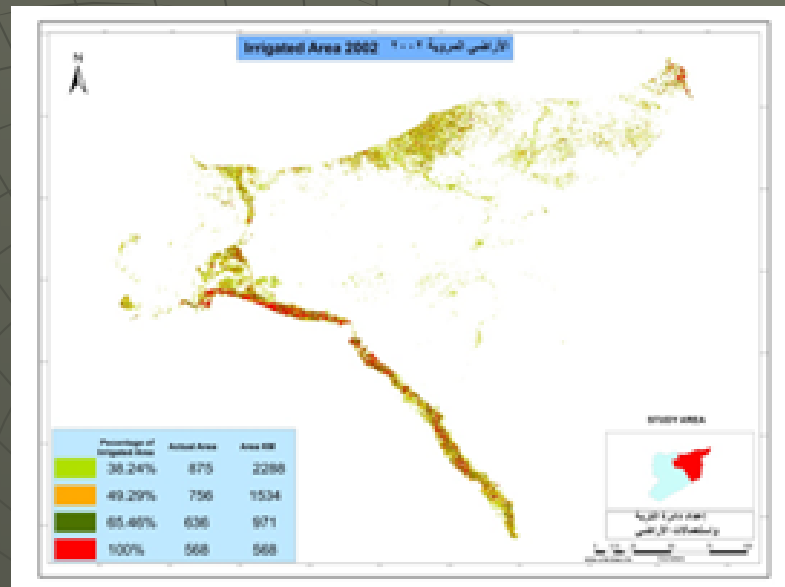
مخطط المواقع النهائية



Harvesting water projects



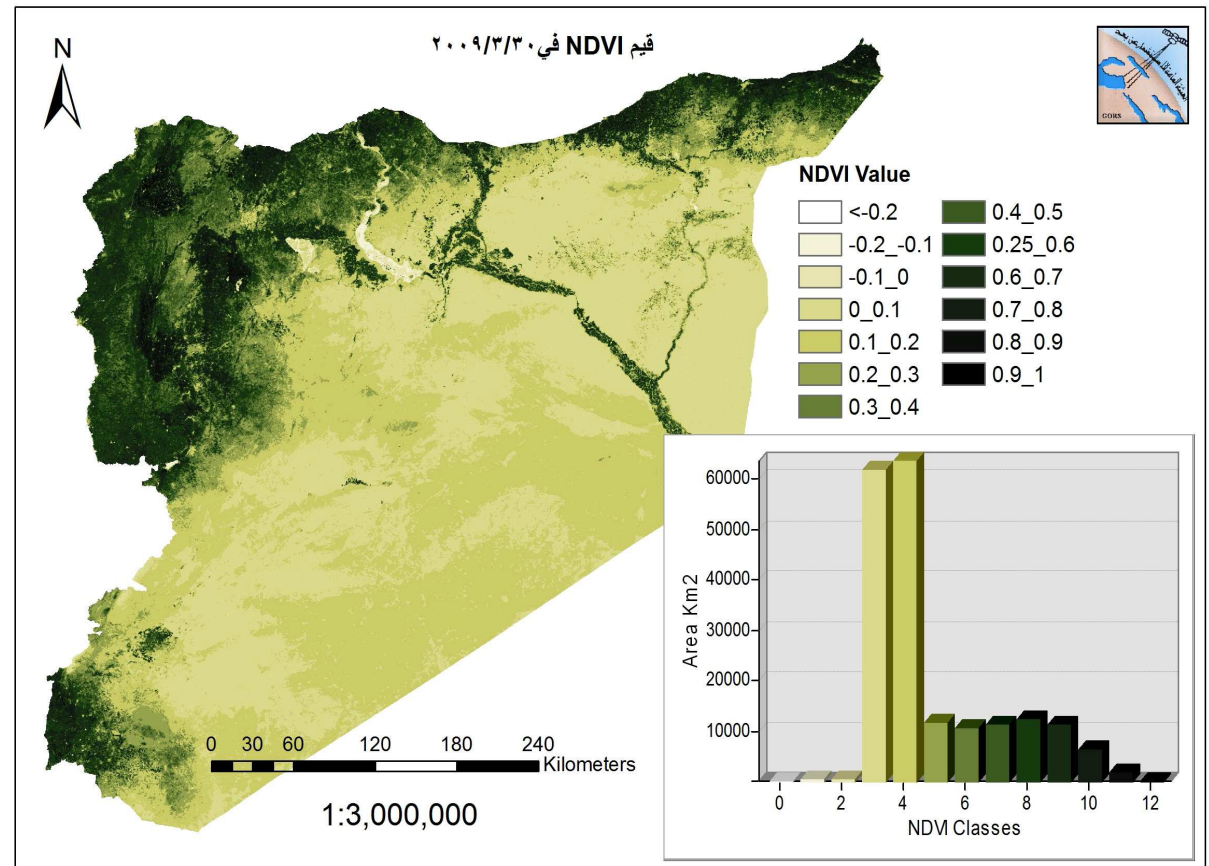
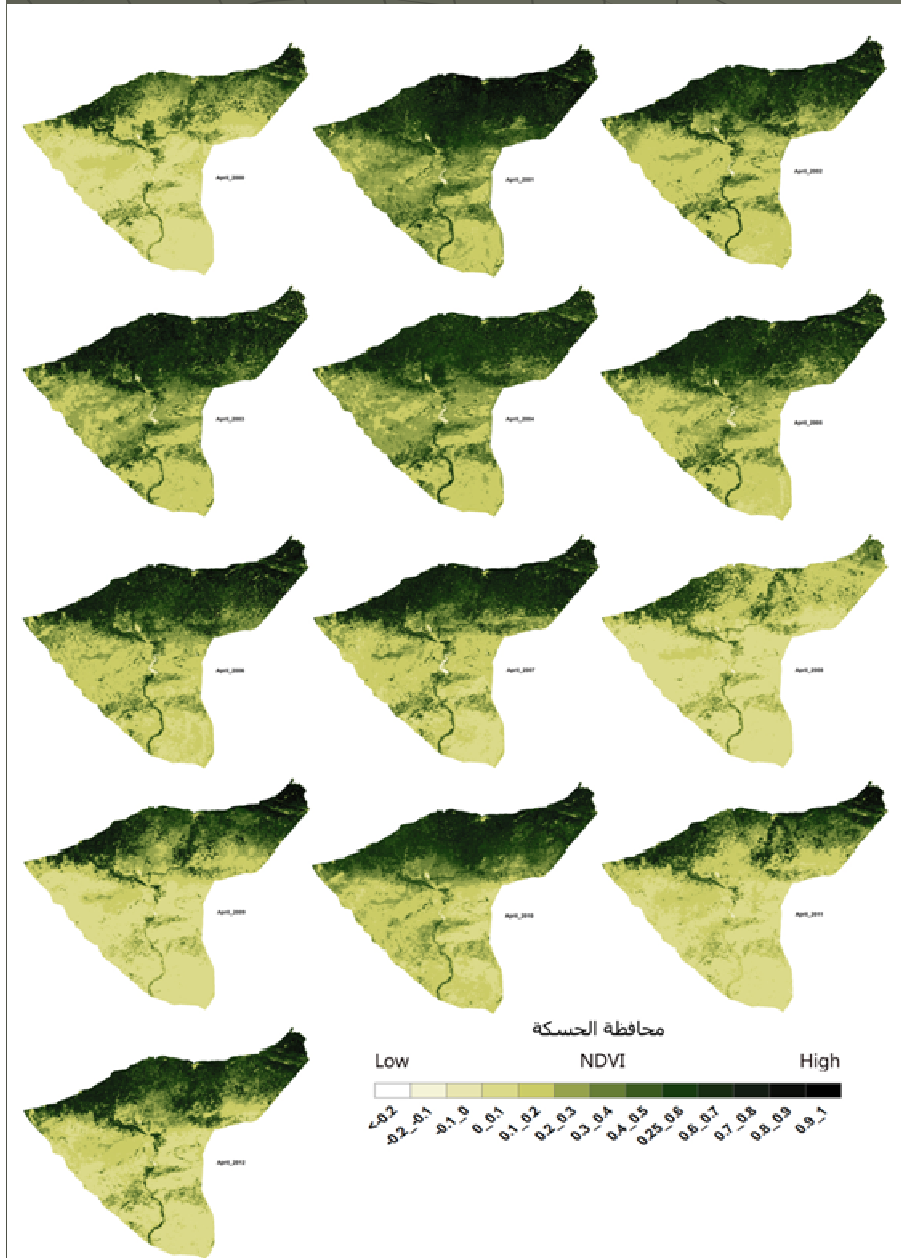
The possibility of inventorying of irrigated lands using RS & GIS



Determining Wells and Protected Areas Locations

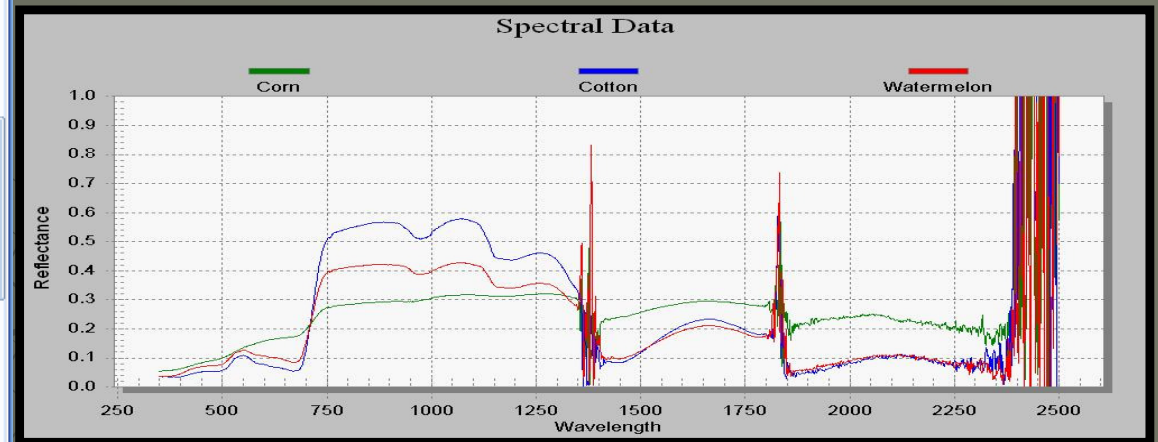
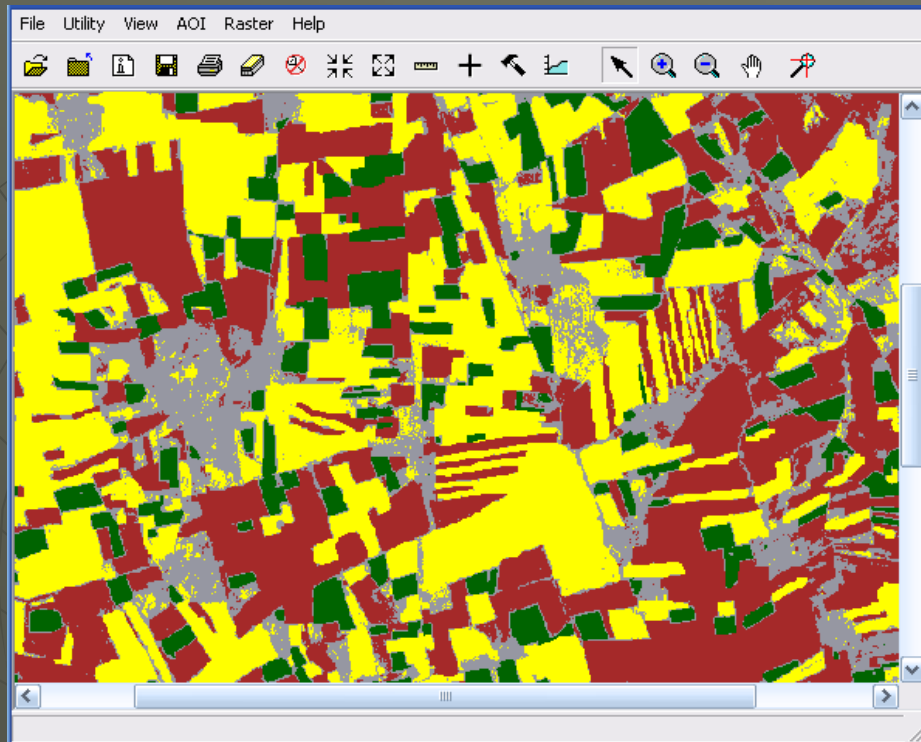


Using NDVI in Monitoring the Area Changes of the Agricultural Land Using MODIS Images

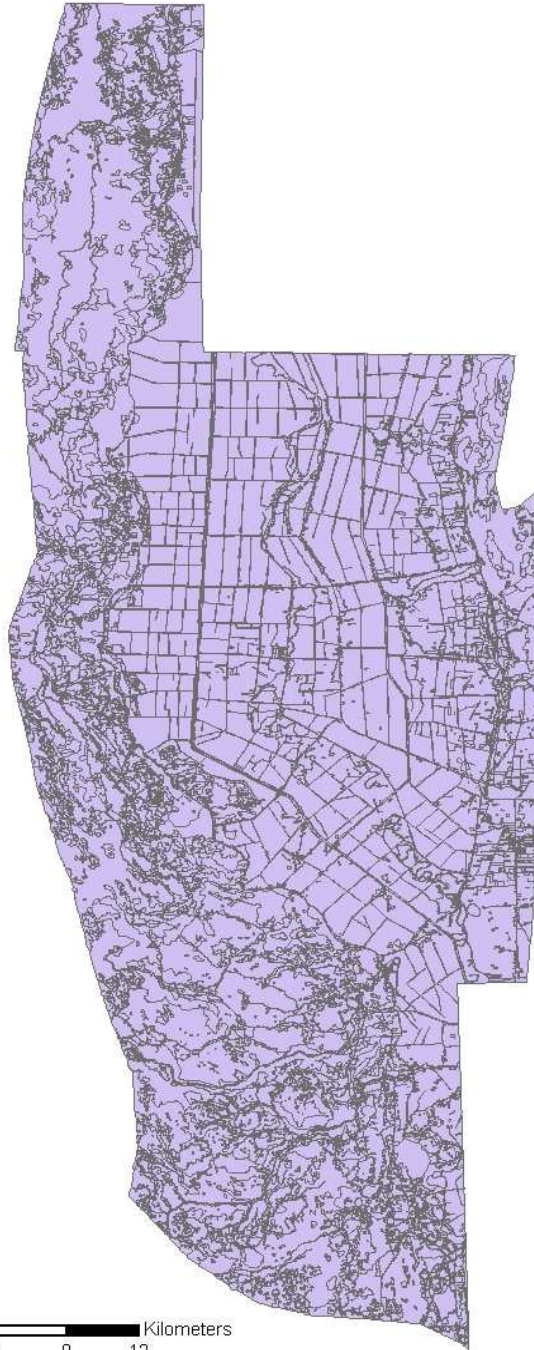


Surveying Natural and Agricultural Resources in Syria

- Remote Sensing Program
- GIS Program
- Radiometric Readings Program
- Landuse Program
- Calculating Crops Areas Program
- Crops Estimation Program



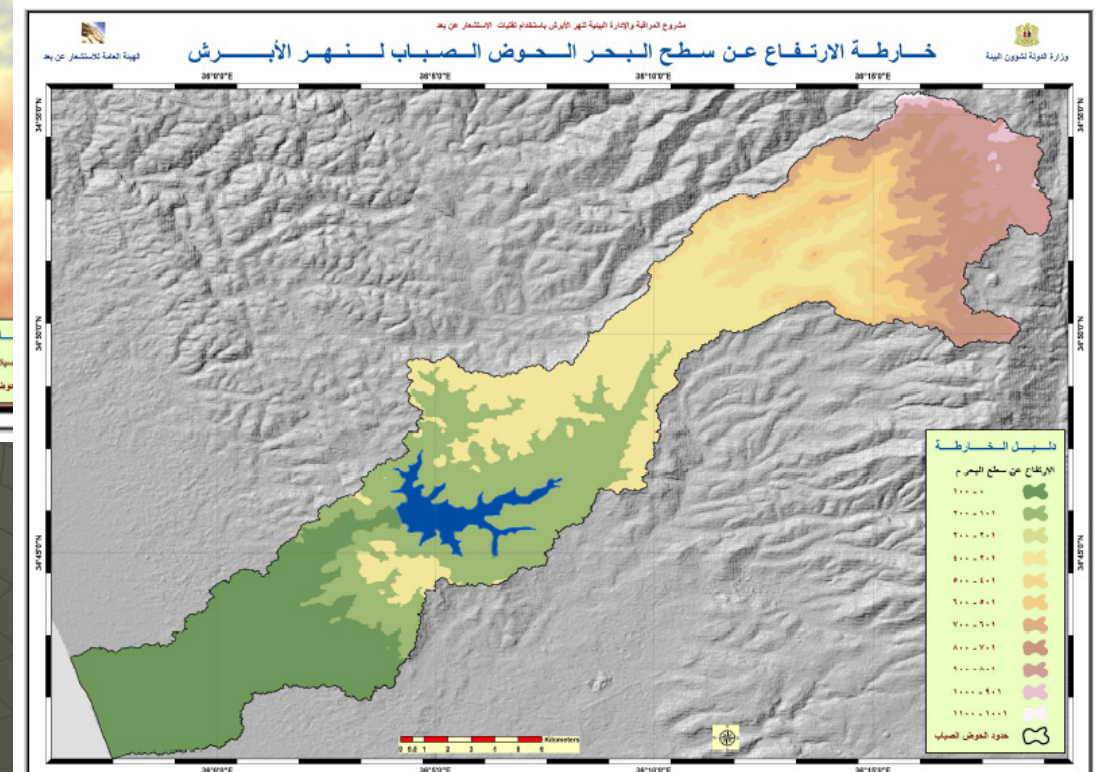
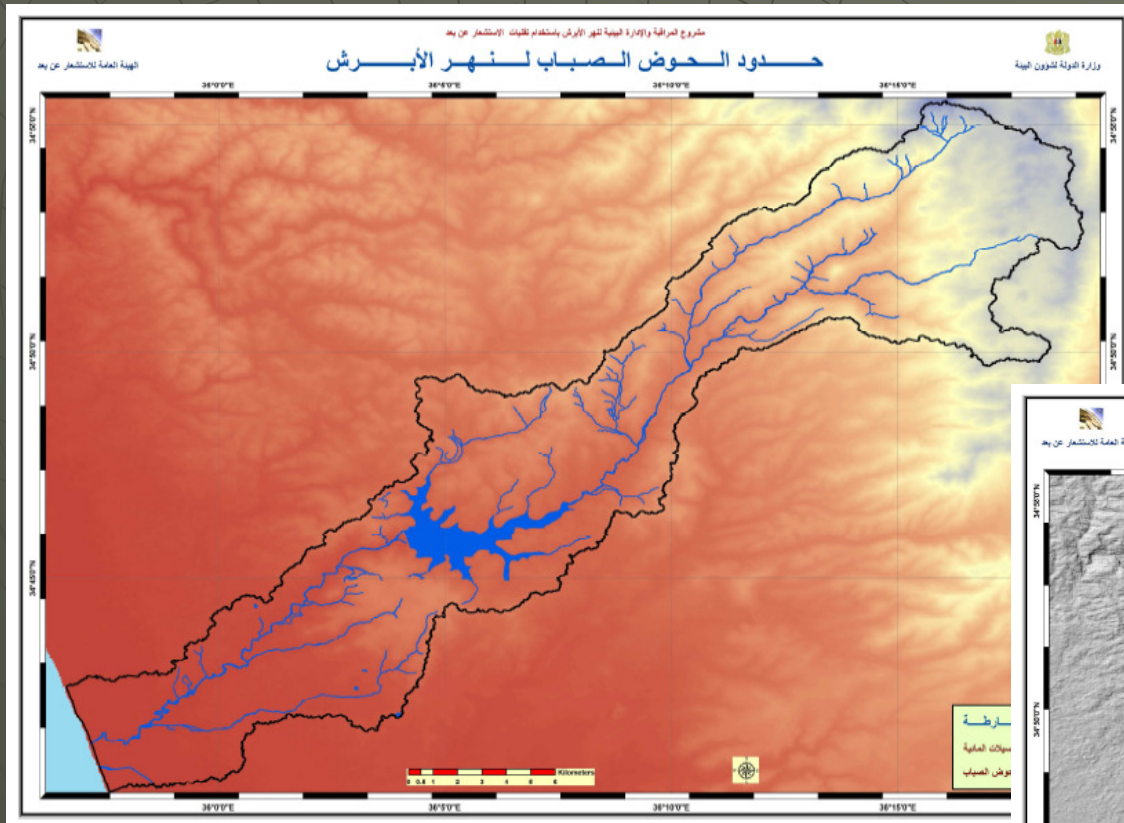
الخريطة الأولية لإستعمالات الأراضي لمنطقة الغاب



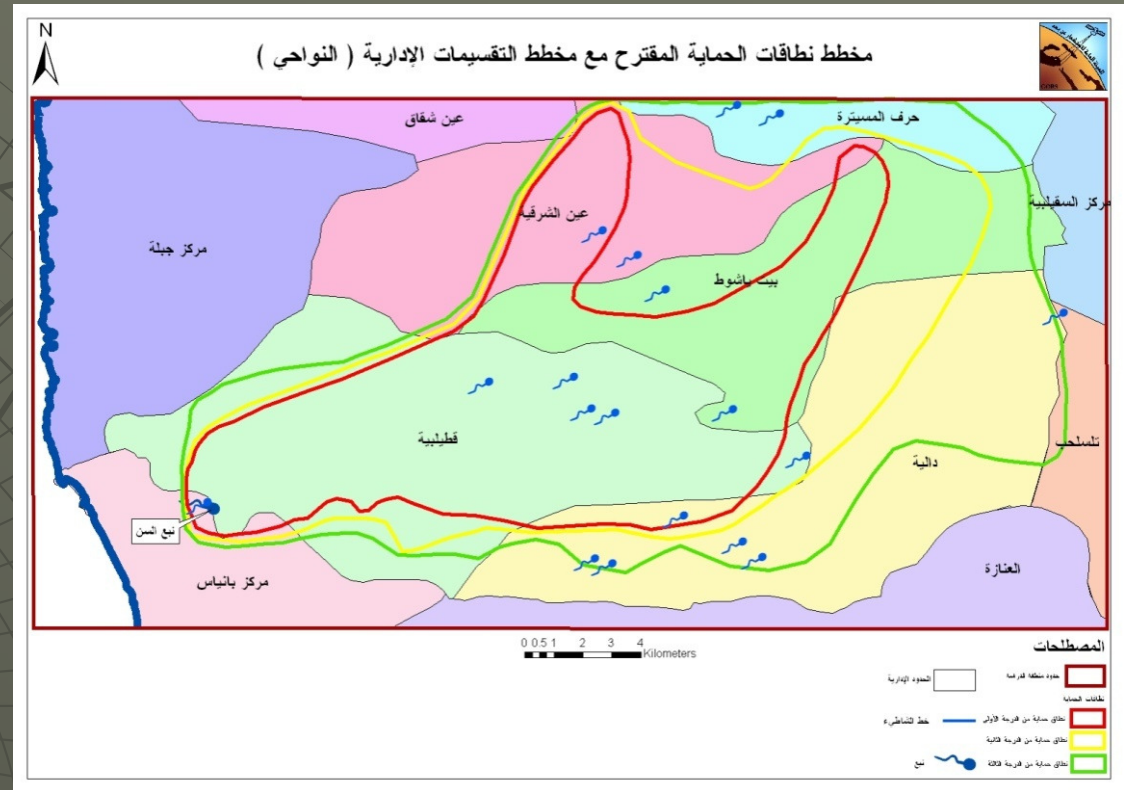
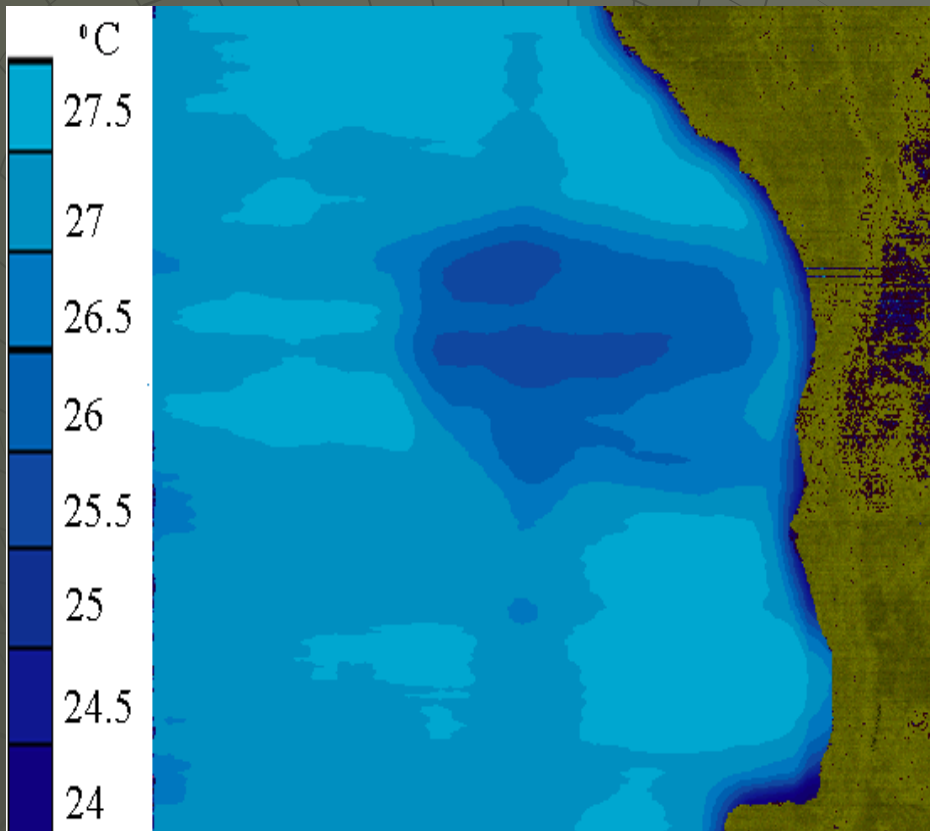
0 1.5 3 6 9 12 Kilometers

Land Use Mapping

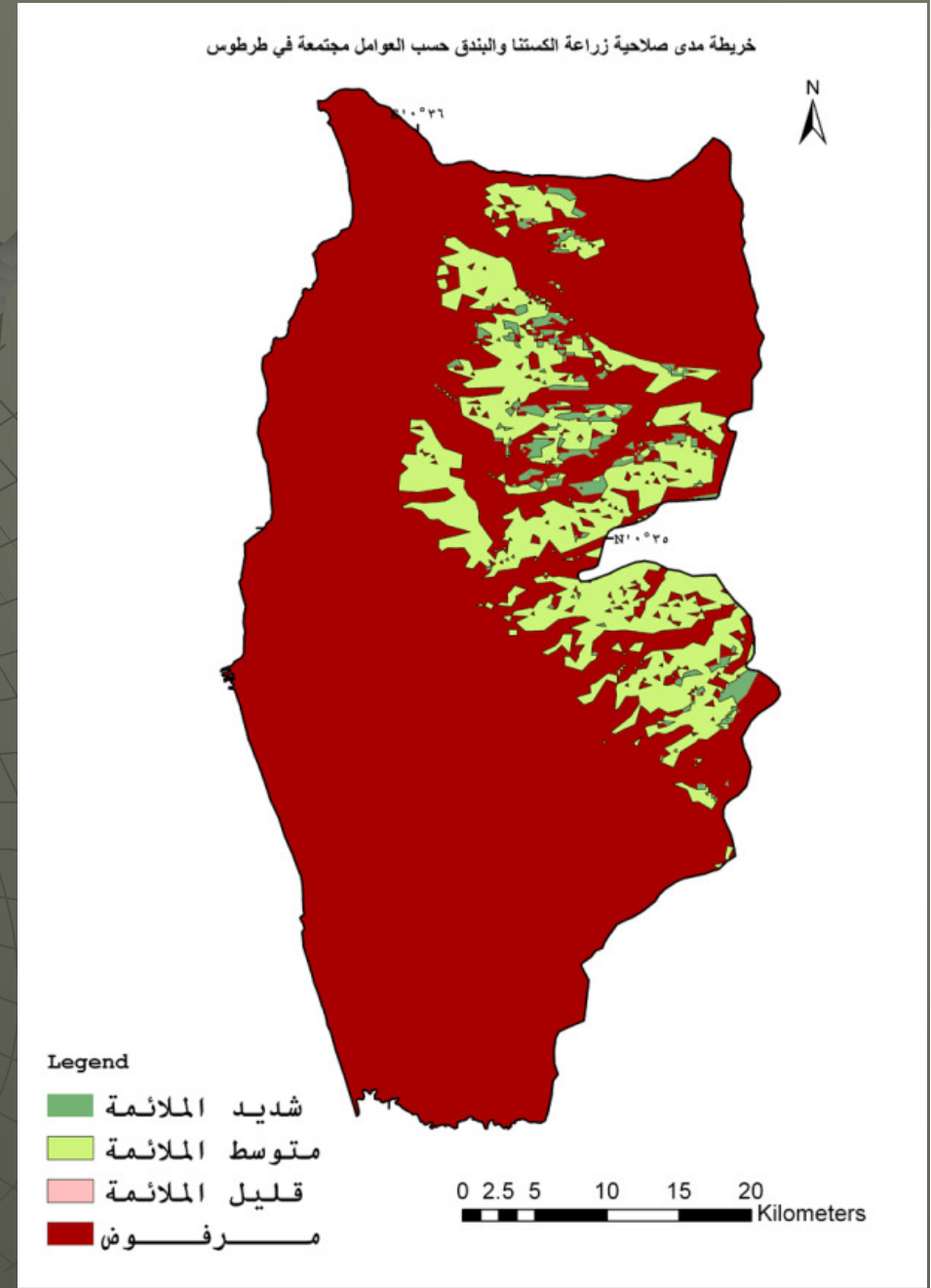
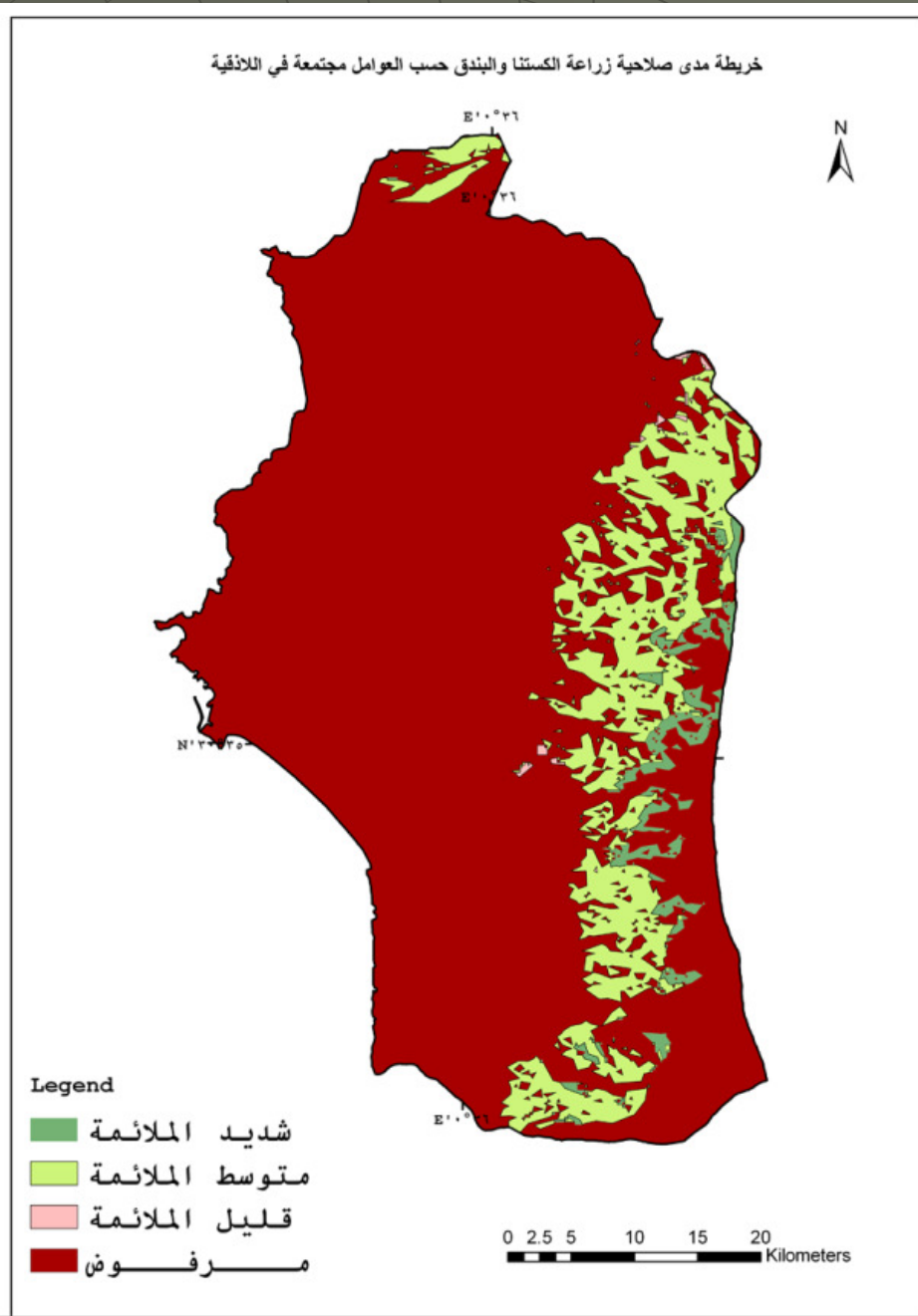
Monitoring Rivers for Environmental Purpose



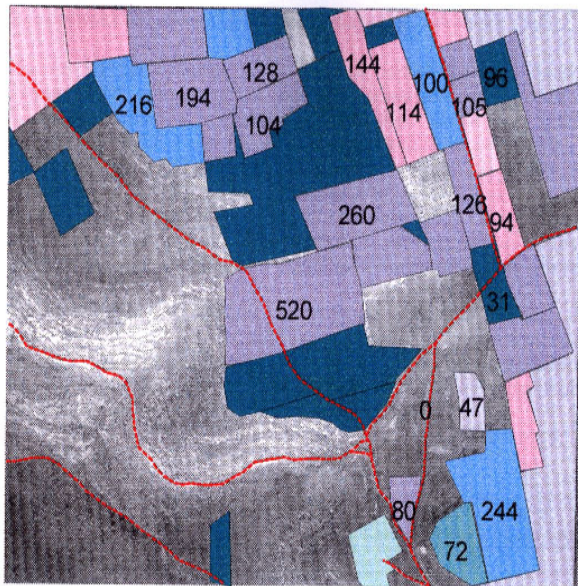
Assin Basin Protection



Determining the Suitability of Lands for Afforestation



Calculating Fruit Trees



Training

GORS organizes a lot of specialized training courses yearly for its own cadre and for technicians of other governmental establishments interested in remote sensing and the assisting systems.

These courses include:

Image processing for different uses.

GIS to different levels.

Training Lab



Thanks for your Interest



