



Nyiragongo Volcanic Eruption

Goma - DR Congo

PM: Jordi INGLADA (CNES)



Plan

- Project details
- Available data
- Value added products
- Validation
- Conclusions





Project details

- Nyiragongo volcano (Congo DR) erupted on January 17, 2002
- The Charter was triggered by Belgian CPA on January 21
- End User needs:
 - Impact of the lava flow over Goma city
 - Available areas for setting up refugees ' camps



Available data

- Archive data
 - SPOT: Pan and XS
 - Radarsat: F5, S6
 - ERS2
- New acquisitions
 - SPOT: all cloudy
 - Radarsat: F2, S6, F5



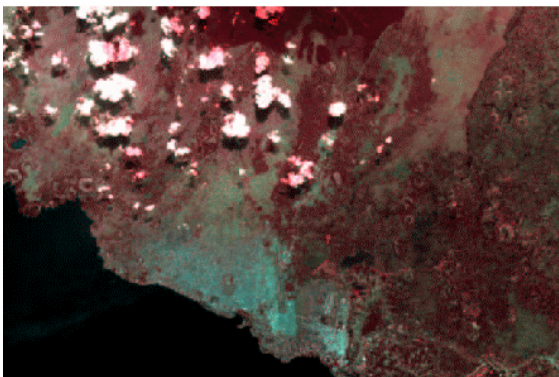


Value added products

- SPOT archive data was used for producing a land-use base map.
- Radarsat fine mode images were used for change detection.
- Delivered 3.5 days after Charter activation.



Value added products



SPOT P+XS Fusion



Change detection
using Radarsat images





Validation

Map provided by EU:

Ground measures
produced 3 days after
the Charter maps.



Validation

Comparison
of ground
measures with
Charter
products.



- Not detected
- Good detection
- False alarm



Conclusions

- The Charter was triggered 4 days after the eruption
- Only Radarsat data was available for change detection
- Value added products were produced in 3,5 days
- A validation of the maps has been done using ground measures

