

# Avanti Consultancy

14 October 2008

# A SHORT History of Avanti

- ❑ **Founded 1996, 60 staff in 3 divisions – consultancy, networks & satellites**
- ❑ **Satellite centric activities – from Earth Observation to Comms**
- ❑ **Aim was to develop satellite services but started with consultancy**
- ❑ **Consultancy carries out externally funded projects with future services and markets in mind**
- ❑ **Consultancy has A1 clients, e.g. satellite operators, and carries out technical and business consultancy**
- ❑ **Track record of commercialization, e.g. demerged screenmedia, internet broadband**
- ❑ **Highlights include AIM flotation, Hylas development (including capital raising in the City of London)**

# NOT Avanti Consultancy



"THESE ARE SOME GREAT SOLUTIONS WE'VE COME UP WITH, ED. SEE IF WE HAVE ANY PROBLEMS THEY'LL SOLVE."

# Consultancy Areas and Projects

There are currently three areas of interest to Avanti consultancy:

## Location Based Services / Transportation

1. **SISTER** (DG Enterprise)
2. **VEER** (Technology Strategy Board)

## Disaster / Crisis Management

1. **TANGO** (DG Enterprise)
2. **CHORIST** (DG INFISO)
3. **Satellite Based Alarm System** (ESA)

## Satellite Broadband

1. **Rural Wings** (DG Enterprise)
2. **Broadband on Trains** (ESA)
3. **Capacity Building** (ESA)

European, EU & ESA (but not UN) projects

Today we will concentrate on the middle area although some others, e.g. capacity building, are possible of interest

# Typical Project Structure

***A typical project will promote the integration of satellite and terrestrial communications in three areas.***

Analysis

Standards

Practical

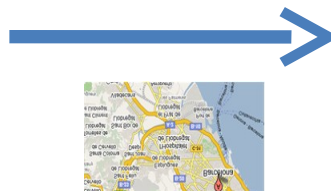
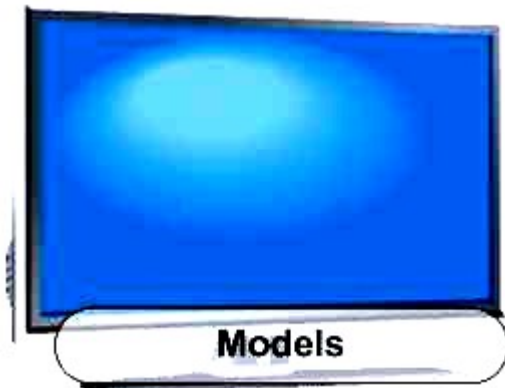
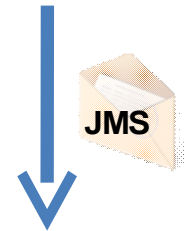
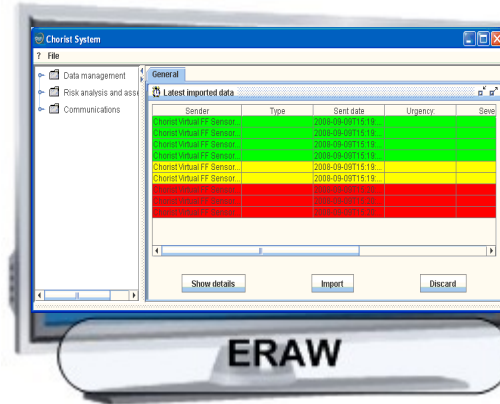
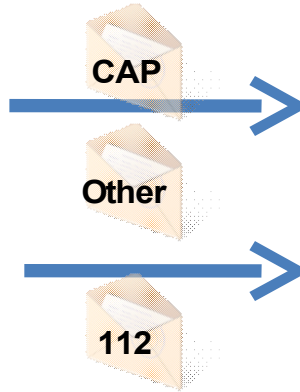
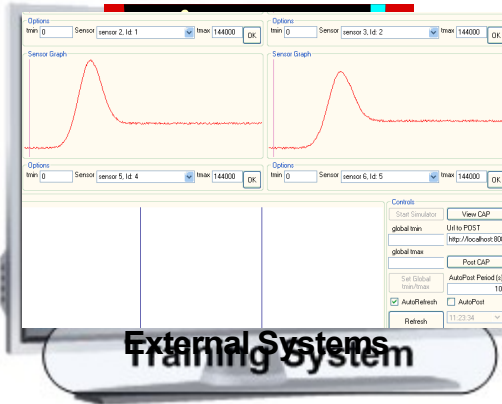
# CHORIST Overview

- ❑ **CHORIST will propose solutions to increase rapidity and effectiveness of interventions following a major natural and/or industrial disaster in order to enhance citizens' safety and communications between rescue actors.**
- ❑ **An EU FP6 project**
- ❑ **Pan-European scope**
- ❑ **A 'toolbox'**
- ❑ **3 years duration, of which 1 year left**
- ❑ **15+ partners from across Europe**
- ❑ **3 main parts:**
  - **Risk Assessment (authorities)**
  - **Comms to Citizens (citizens)**
  - **Rapidly deployable systems (in-field rescue teams)**

# CHORIST Risk Assessment

- ❑ **Demonstrations in Catalonia, Spain in Spring 2009 You are welcome to attend.**
- ❑ **Terrestrially focused but we want to extend with satellite**
- ❑ **Avanti is involved in the Risk Assessment or Alert Chain part, which has the following main parts:**
  - **Training System – a simulator of events (historical/what if)**
  - **Awareness System – a first rule-driven indicator of problems**
  - **Analysis System – in depth analysis, running of models**
- ❑ **Further details [www.chorist.eu](http://www.chorist.eu)**

# CHORIST Alert Chain



# TANGO Overview

- ❑ EU FP6 project
- ❑ 3 years duration, of which 1 year left
- ❑ 15+ partners from across Europe
- ❑ Several parts, including:
  - Catalogue Telecom Offers for GMES SP to browse/search
  - Demonstration of Satcoms in ‘Scenarios’ (*fire, flood etc.*)
    - *Comoros, Ethiopia, Vietnam, Valencia, Madeira .....*
- ❑ Avanti DVB-RCS, WorldSpace, CLS/Argos ... involved
- ❑ Demonstrations from Oct 2008 - Spring 2009
- ❑ Further details <http://ctsp.avantiplc.com> (U:SP1 P:SP1)

# TANGO CTSP

- ❑ **Avanti is involved in developing the Common Telecoms Service Platform (CTSP).**
- ❑ **The CTSP is a first model of a potential Portal for Service Providers (to identify, book and manage Telecom Services)**
  - **Information – which services are available**
  - **Selection – *(region, service, price, bandwidth constraints)***
  - **Booking – *(A Telecoms 'pipe' including location of terminals)***
  - **Monitoring – *(Terminals of a Service)***
  - **Community *(forums to track orders & exchange ideas)***
    - TP & SP can both access the CTSP
  - **Not intended for commercial deployment**

## CTSP

Home **Needs** Offers Services Admin Forums Information Account Log out

### Need

Service Region Cost QOS Supplier Terminals

Drag/drop selections (icons) onto the bar below.

Profile Name:

1 2 3 4 5 6... 10 Next 1 Jump

10 pages / 97 rows total

Id	Name	Cost	Currency	Per	Fwd	Unit	Rtn	Unit	Region	Services
INM-001	INMARSAT -A	250.00	GBP	Mb	100.00	Kb/s	100.00	Kb/s	Worldwide, Europe	
TH01	Thuraya_01	6.00	GBP	Mb	128.00	Kb/s	1.00	Mb/s	Chile	
1059	Avanti_Home_500	25.00	GBP	Mb	2.00	Kb/s	512.00	Kb/s	Europe, Africa	Data Collection, EO Imagery, Reliable, Access Point
1060	Avanti_Home_500	25.00	GBP	Month	96.00	Kb/s	512.00	Kb/s	United Kingdom	Access Point
1058	Avanti_Home_500	25.00	GBP	Month	128.00	Kb/s	512.00	Kb/s	Italy	Access Point
1053	Astra2Connect_1024	40.00	GBP	Month	128.00	Kb/s	1.00	Mb/s	Ireland	Access Point
1052	Astra2Connect_512	30.00	GBP	Mb	128.00	Kb/s	512.00	Kb/s	Slovenia	Access Point
1051	Astra2Connect_256	20.00	GBP	Mb	128.00	Kb/s	256.00	Kb/s	Slovenia	Access Point
1050	Astra2Connect_1024	300.00	GBP	Mb	128.00	Kb/s	1.00	Mb/s	Egypt	Access Point
1049	Astra2Connect_512	230.00	GBP	Mb	128.00	Kb/s	512.00	Kb/s	Vietnam	Access Point

Please use the tabs below to hide/show columns

Id
  Name
  Cost
  Fwd
  Rtn
  Region
  Class

# TANGO CTSP

## Terminals

[Add New Terminal](#)

[Search](#)

[Zoom Show All](#)

## Current Terminals

[wrdewdw](#)

[dwdwd](#)

[tester](#)

[test](#)

[berg](#)



### Tango Terminal Management Interface

Geocoding Enter Address

Add marker

Reverse Geocoding Lat(WGS84)


Lon(WGS84)

Get Address

# Satellite Based Alarm System

- ❑ **12 Month Study for European Space Agency by Avanti, Helios and BAPCO**
- ❑ **Objectives:**
  - ❑ **How can satellite communication play a role in a European wide alarm system?**
  - ❑ **What are the demands and requirements for such a system?**
  - ❑ **How can a satellite based alarm system be made interoperable with existing systems?**
  - ❑ **How should a satellite based alarm system be implemented? (i.e., what is the most credible platform for deployment?)**

# Satellite Based Alarm System

- **What is the cost benefit argument for introduction of a satellite based alarm system in addition to today's existing and future systems?**
  - **How do we foster support from the civil protection community with respect to the proposed solution for a satellite based alarm system?**
- 

# Any Questions?

- Any Questions?