

**RESPONDING TO RAPID URBANISATION AND CLIMATE CHANGE**

# **CALL TO ACTION**

**ON SUSTAINABLE URBANISATION  
ACROSS THE COMMONWEALTH**



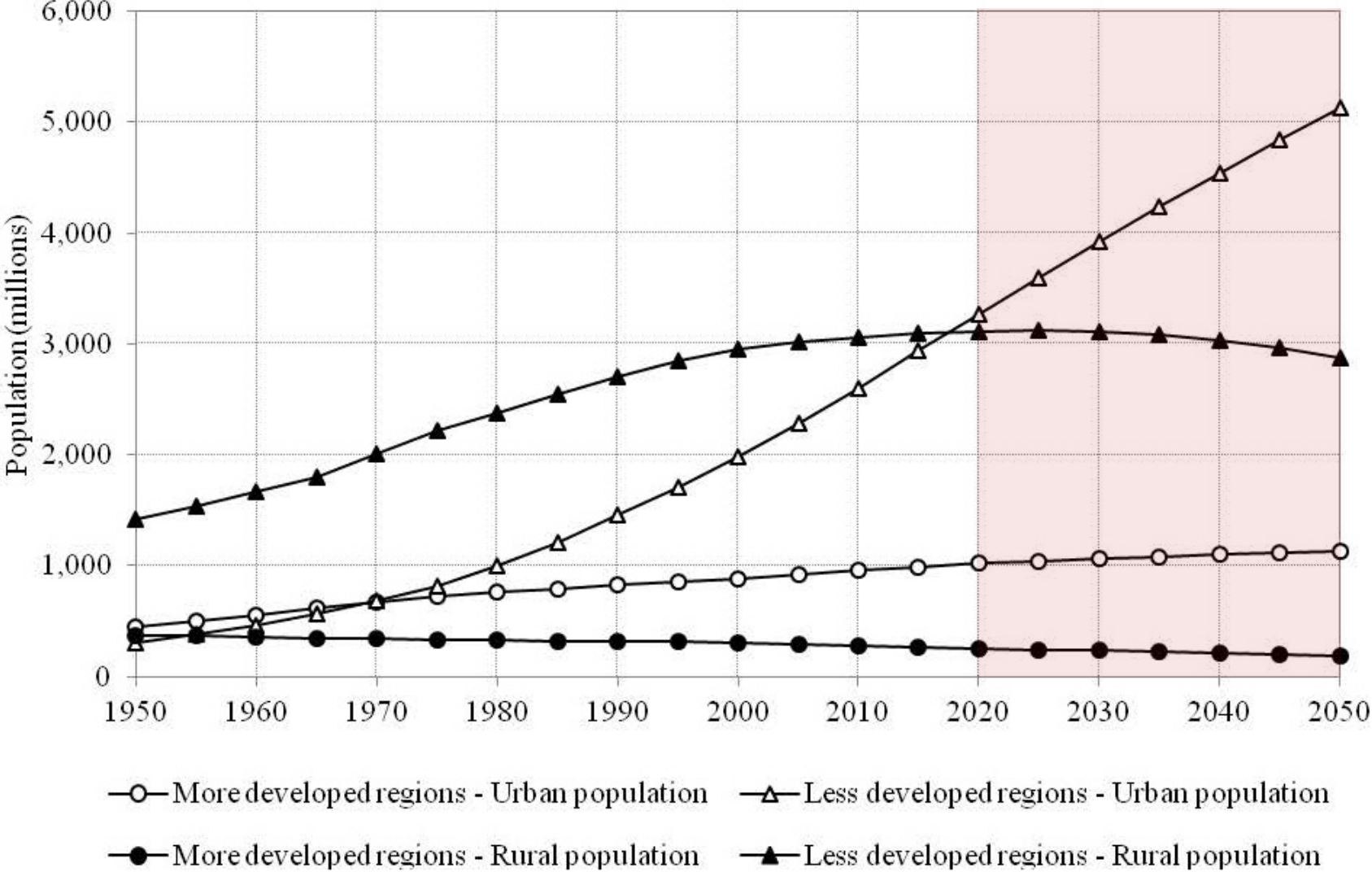
ASSOCIATION OF COMMONWEALTH UNIVERSITIES

COMMONWEALTH ASSOCIATION OF ARCHITECTS

COMMONWEALTH ASSOCIATION OF PLANNERS

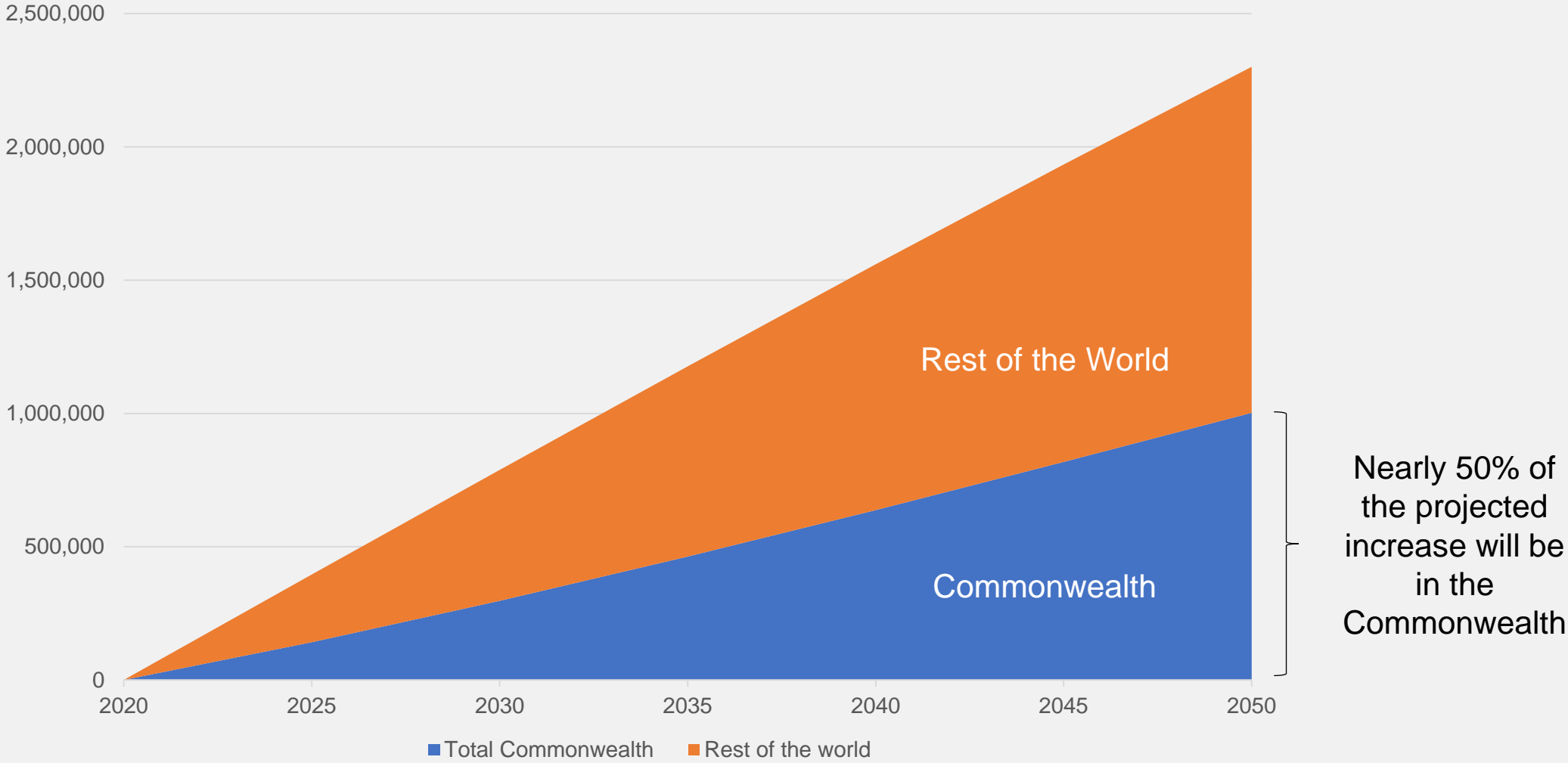
COMMONWEALTH LOCAL GOVERNMENT FORUM

# UN Habitat World Urbanisation Prospects



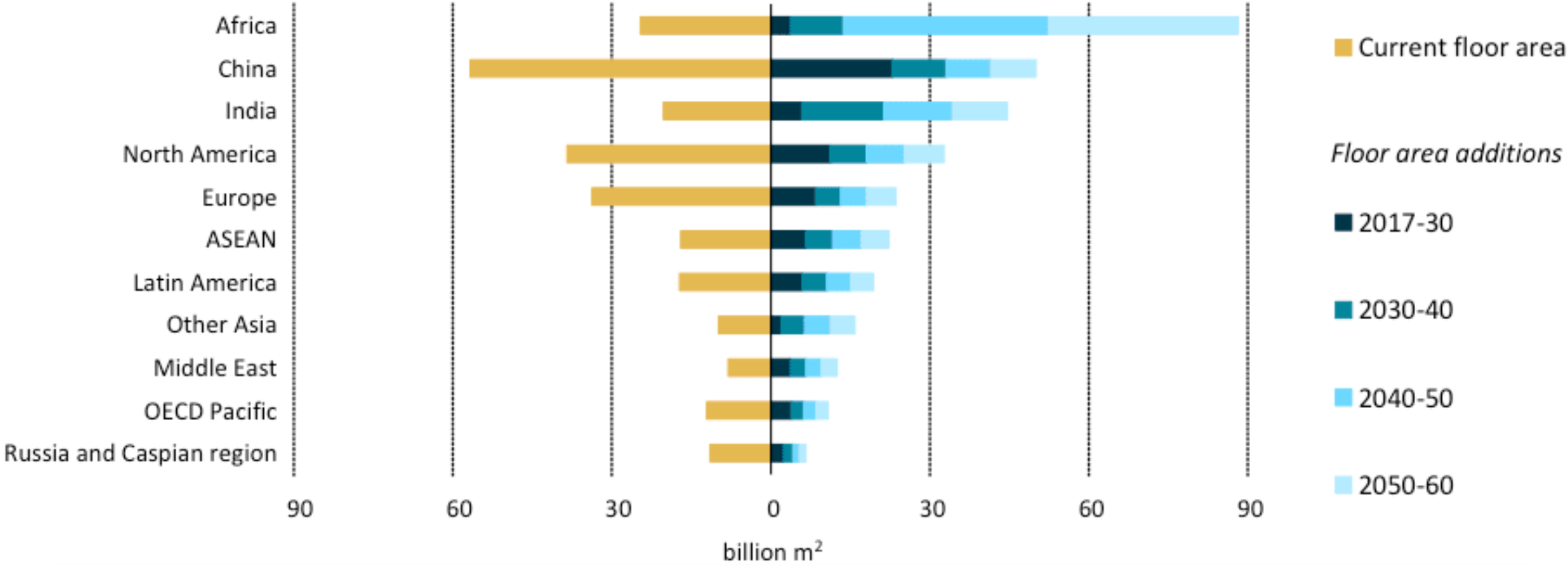


# UN Habitat World Urbanisation Prospects



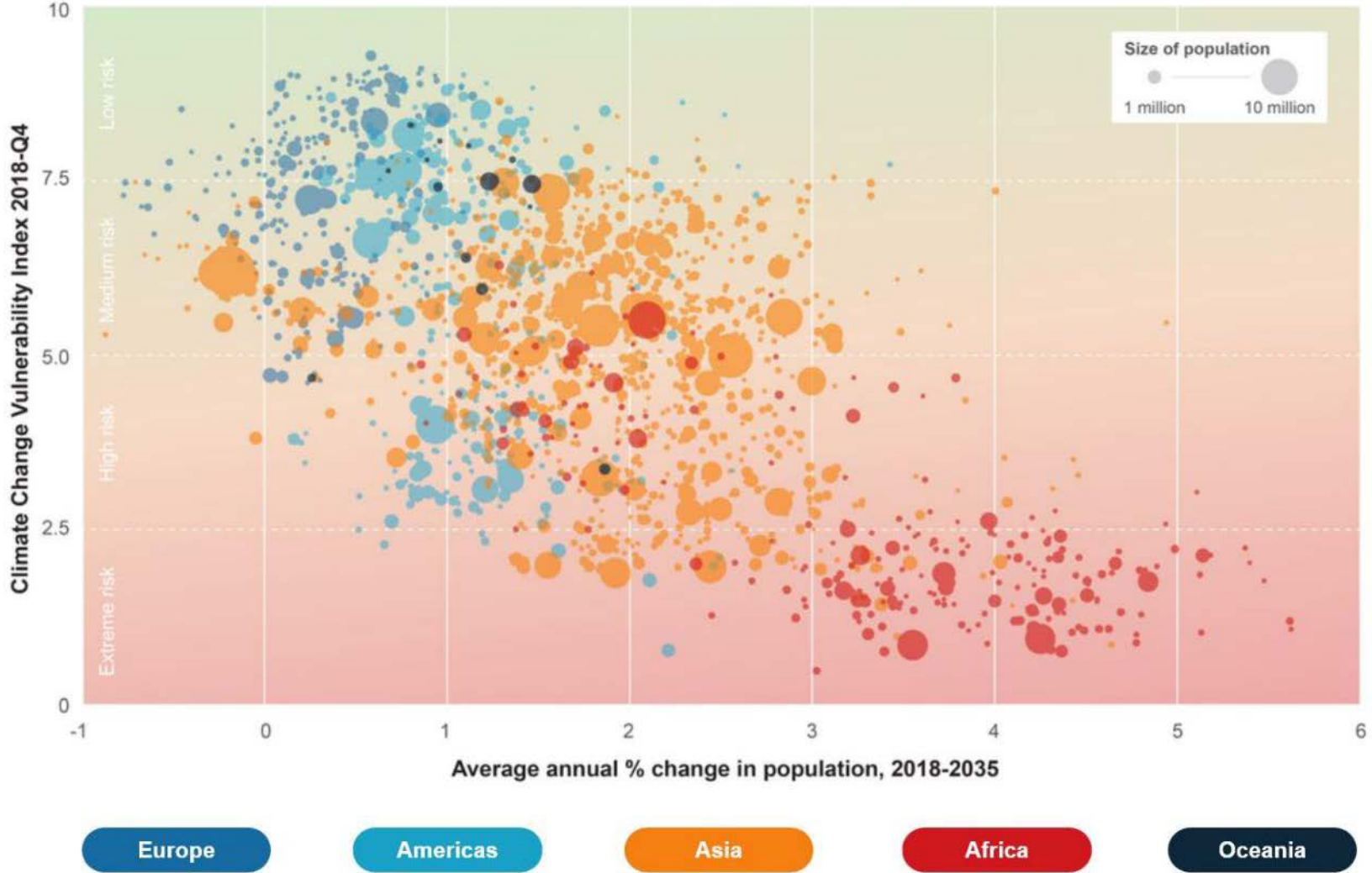
Source: 'World Urbanisation Prospects, 2018', UN Habitat

# Floor area additions by 2060



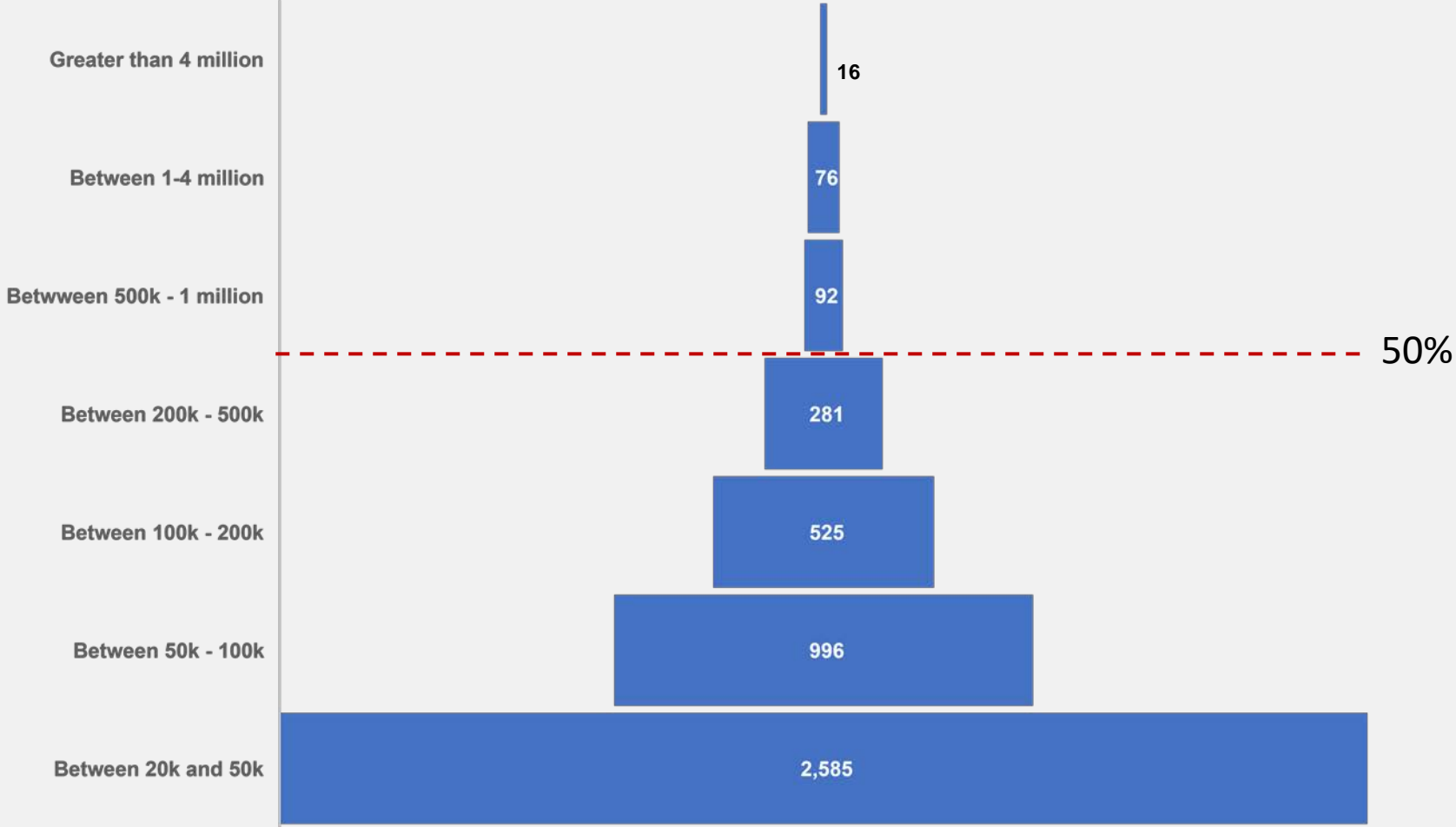
Source: 'Energy Technology Perspectives', International Energy Agency/OECD, 2017

# Climate Change Risk



Source: 'Climate Change Risks', Verisk Maplecroft 2018

# Secondary Cities, the Hidden Story



Source: NYU Marron Institute of Urban Management, Nicolas Galarza, 2000

# Survey of the Built Environment Professions, 2020



## Authors

Commonwealth Association of Architects  
Commonwealth Association of Planners  
Commonwealth Association of Surveyors and Land Economists  
Commonwealth Engineers Council

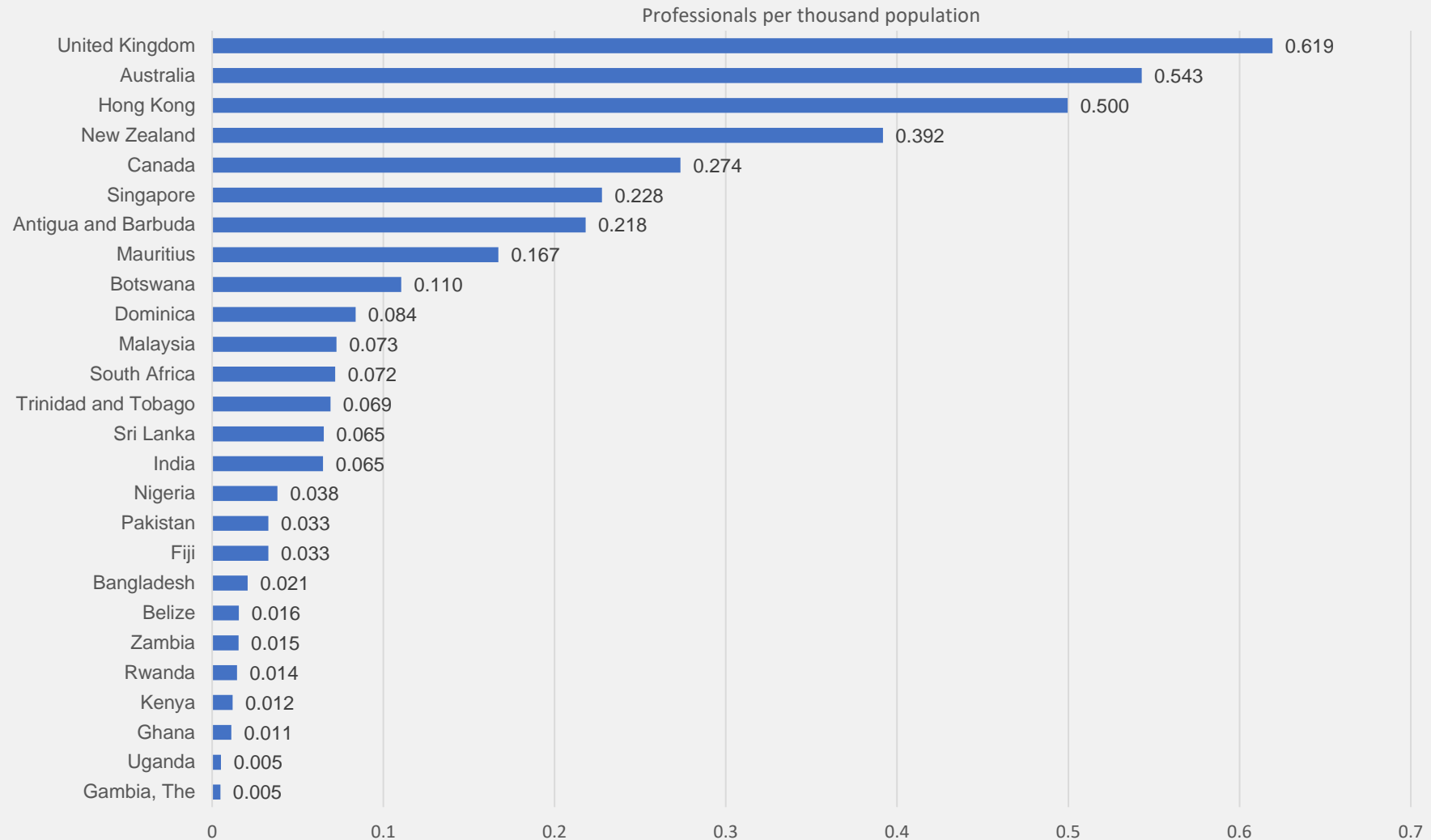
## Commentators

- Architects Registration Council, Botswana
- Institute of Architects Bangladesh
- Pakistan Council of Architects and Town Planners
- Sierra Leone Urban Research Centre
- Commonwealth Local Government Forum
- Canberra University, Australia
- International Growth Centre, Uganda
- Oxford University, Kellogg College, UK
- UCL Energy Institute, UK
- Water Aid, UK

## Supporters

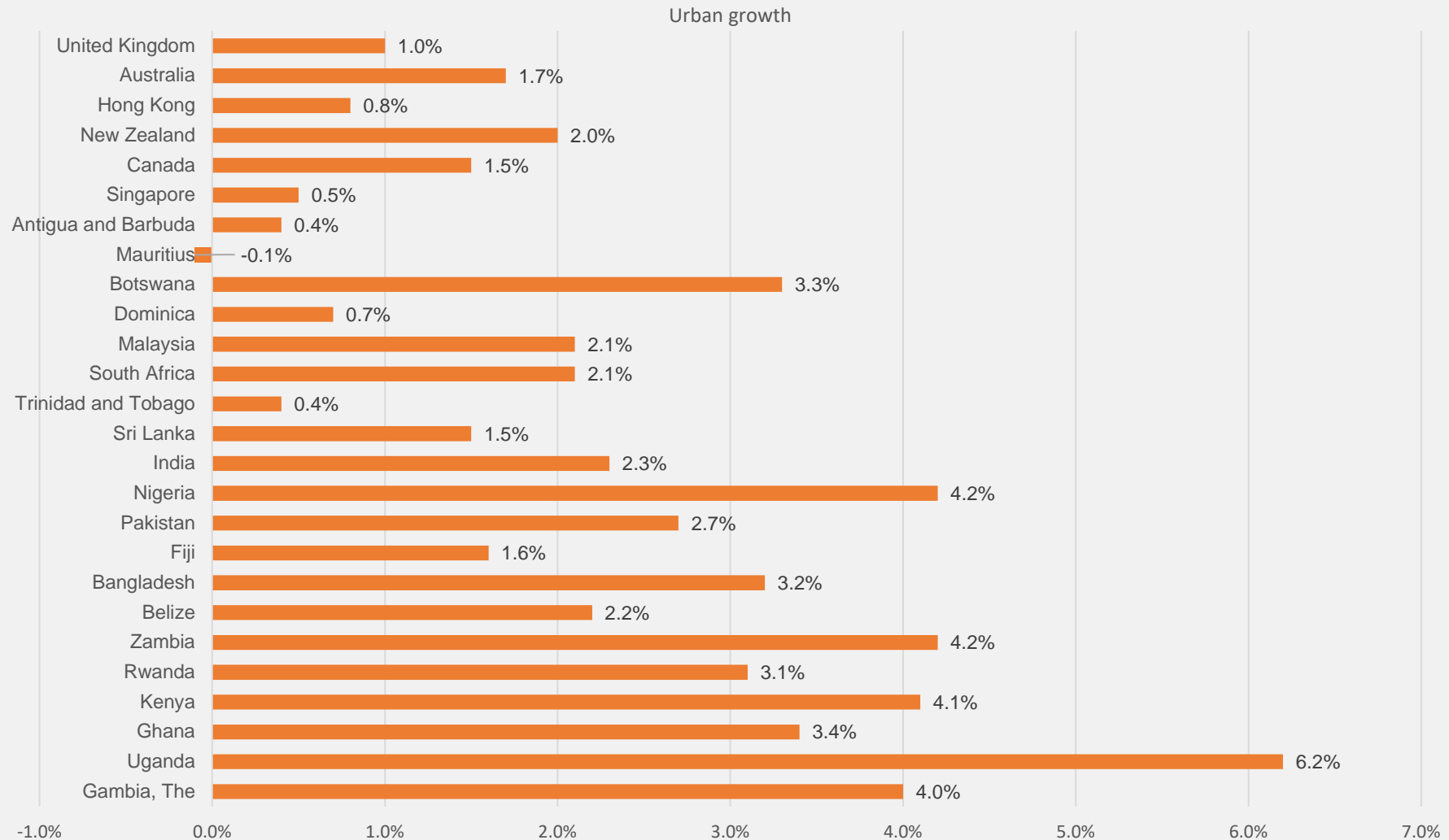
- Commonwealth Secretariat
- The Prince of Wales Charitable Foundation

# Ratio of Architects v Rates of Urbanisation, 2019

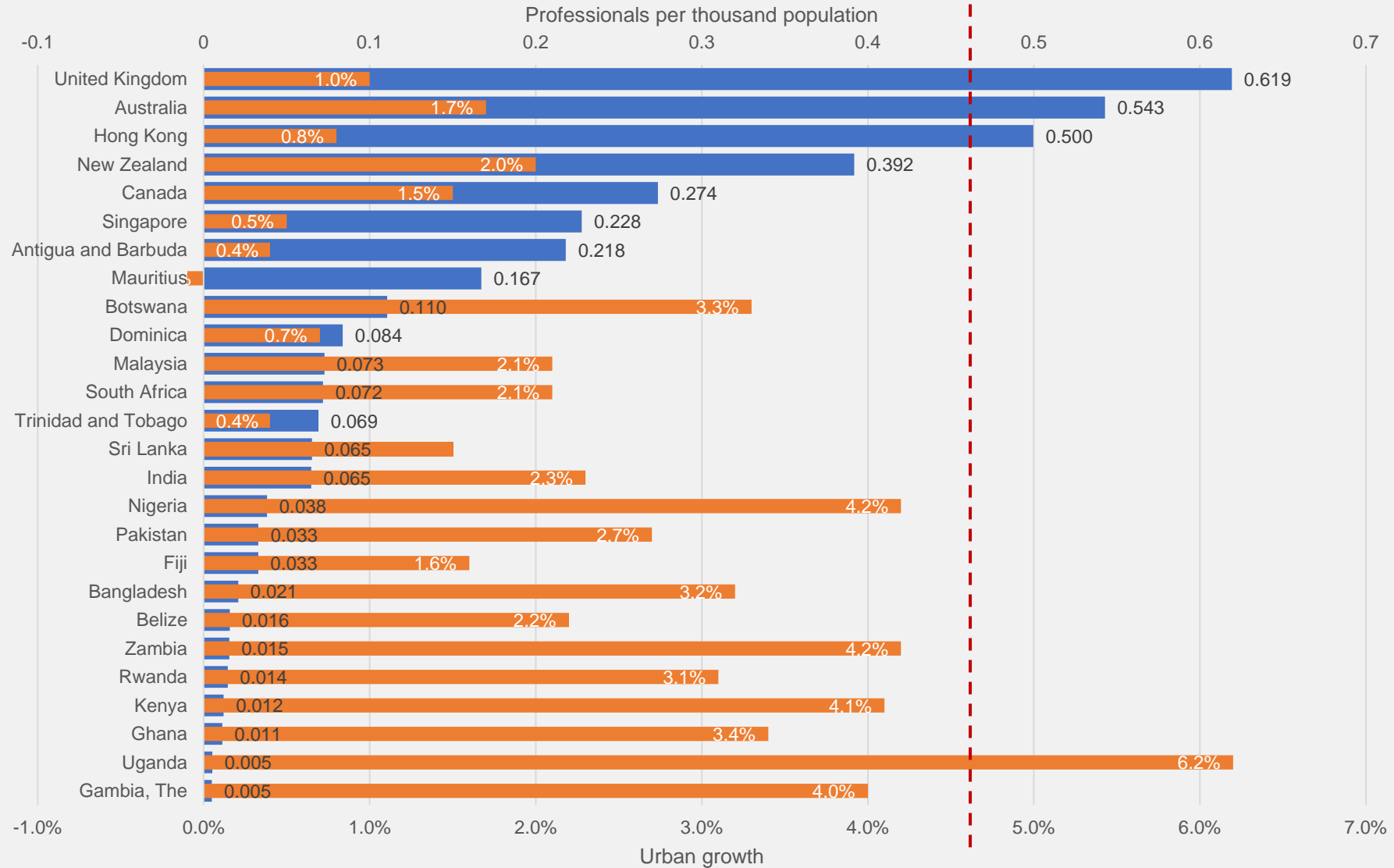




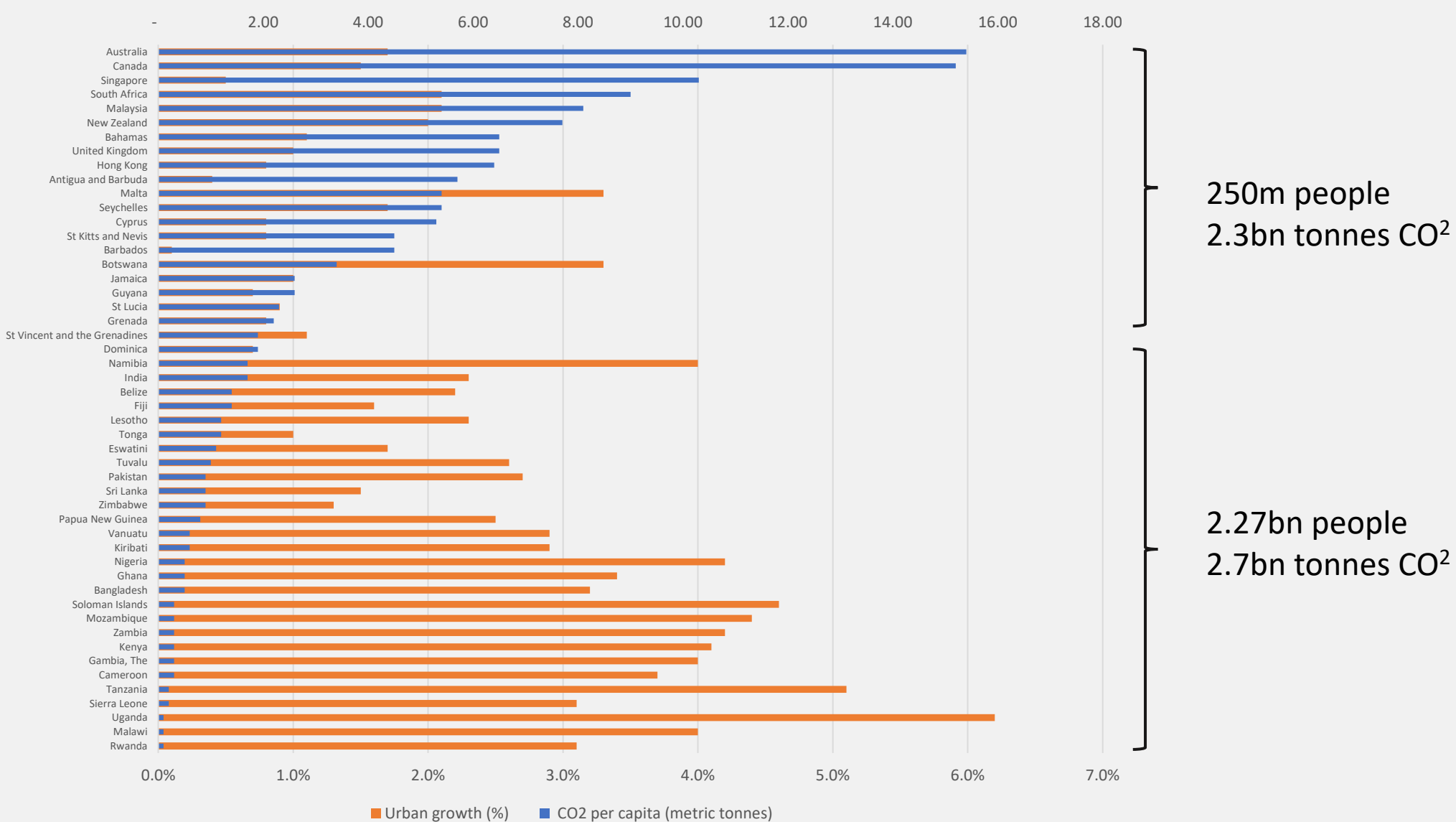
# Ratio of Architects v Rates of Urbanisation, 2019



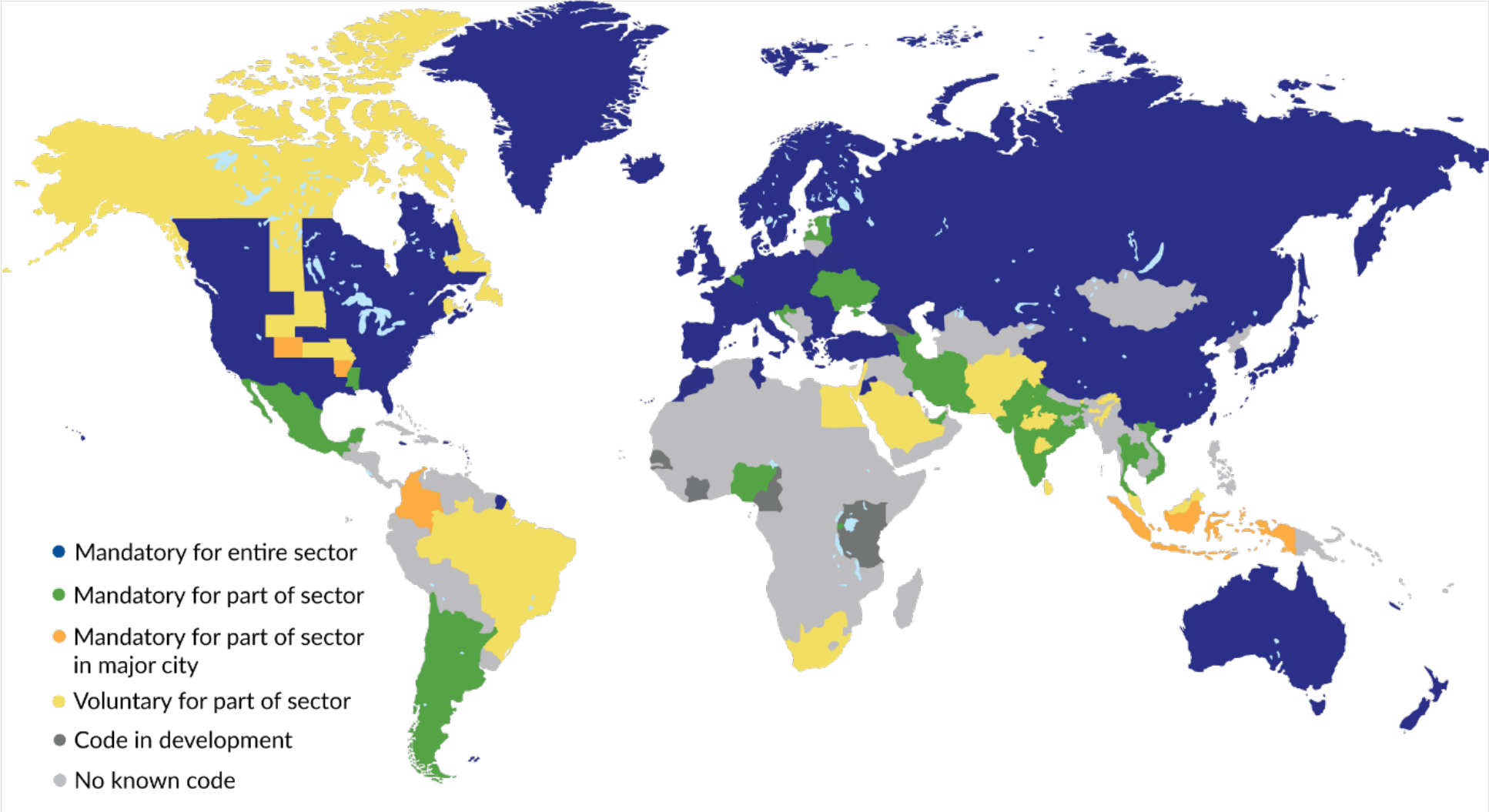
# Ratio of Architects v Rates of Urbanisation, 2019



# CO<sub>2</sub> per Capita v Rates of Urbanisation



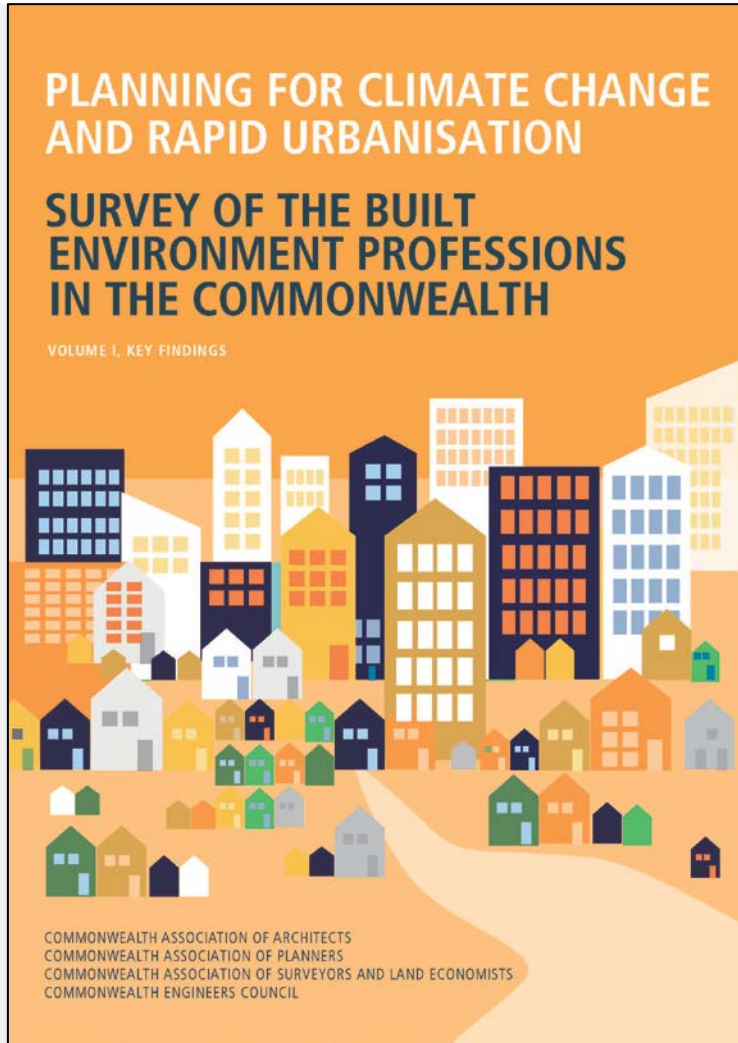
# Building energy codes by country, 2018



Source: International Energy Agency, March 2019



# Survey of the Built Environment Professions, 2020



## Key findings:

1. There is a **critical lack of capacity** in a number of Commonwealth countries, many of which are urbanising rapidly and are among the most vulnerable.
2. There is a corresponding **lack of educational and institutional capacity** to grow the profession fast enough in a number of Commonwealth countries.
3. There is a perceived **weakness in built environment policy** in many Commonwealth countries in terms of standards, implementation and enforcement.



# Unplanned?





# Unplanned, poorly planned?



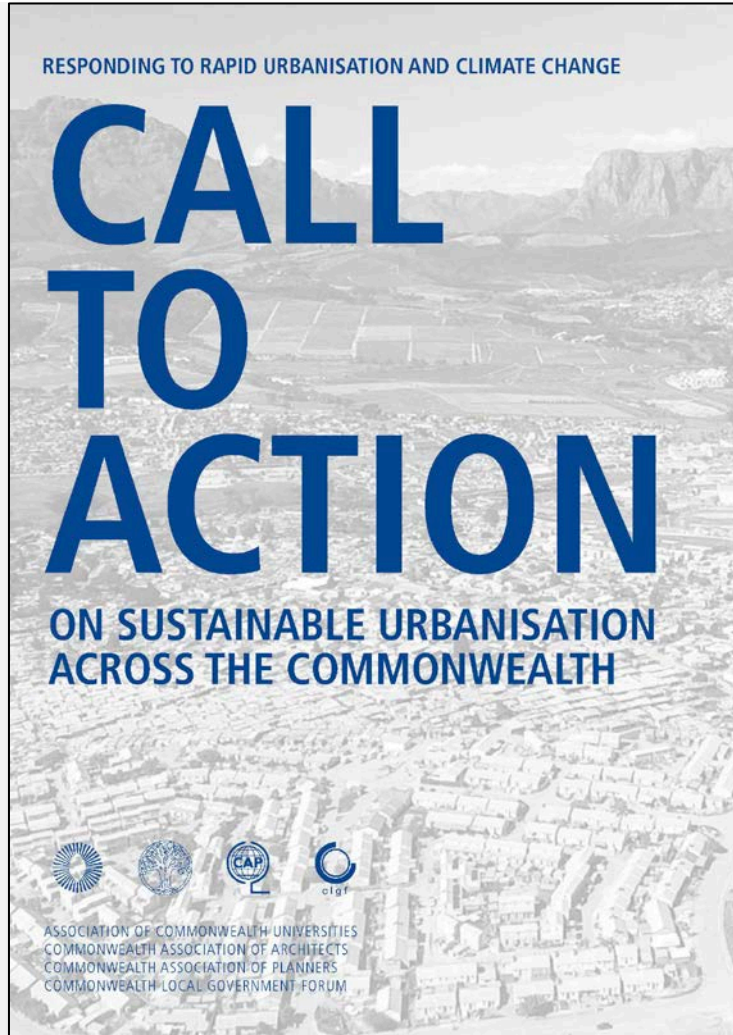


# Unplanned, poorly planned, **well planned?**



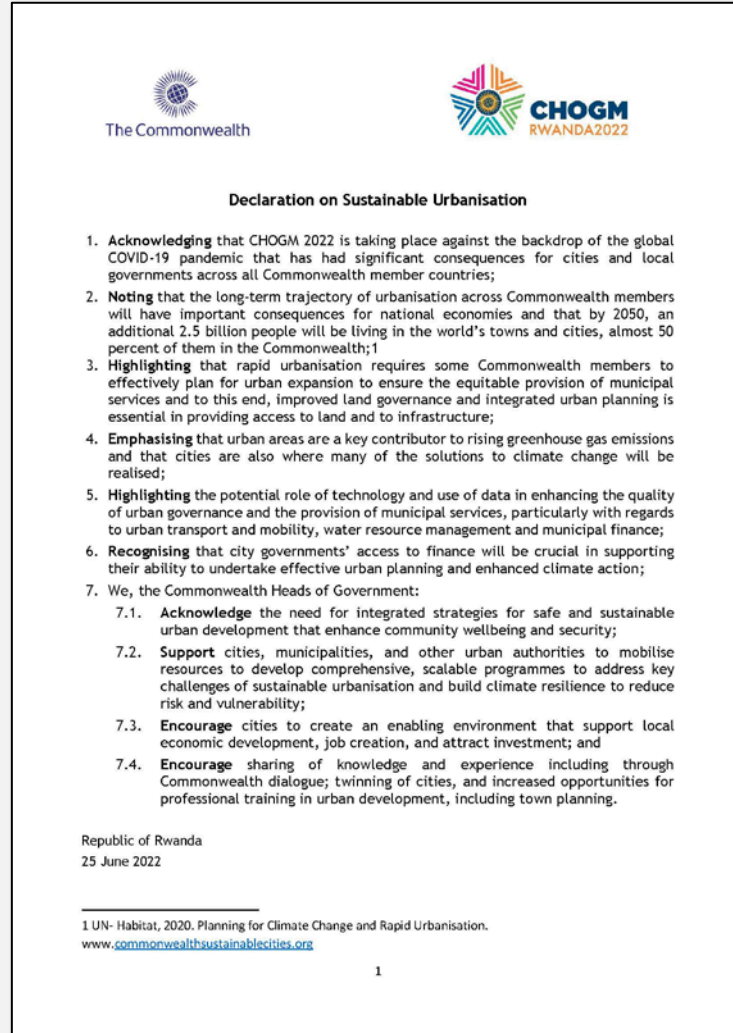


# Call to Action on Sustainable Urbanisation



Source: 'Call to Action on Sustainable Urbanisation in the Commonwealth'

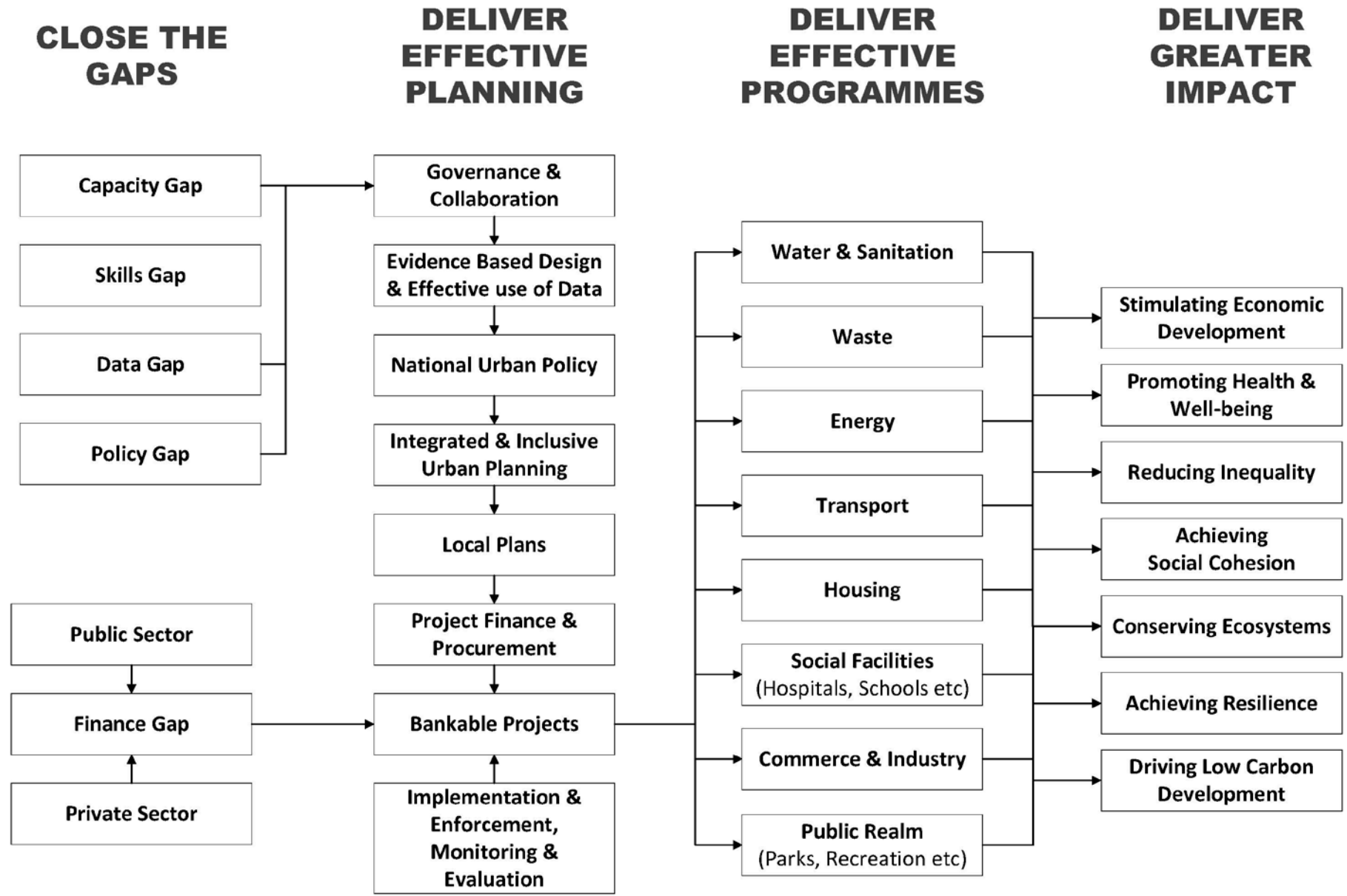
# Declaration on Sustainable Urbanisation



## Headlines:

- Highlighting the need to **plan for urban expansion** and the importance of **integrated urban planning...**
- Highlighting the potential **role of technology and the use of data...**
- Recognising that **access to finance** will be crucial...
- Support cities to **mobilise resources to develop comprehensive scalable programmes...**
- Encourage **knowledge sharing through dialogue...and increased opportunities for professional training in urban development.**

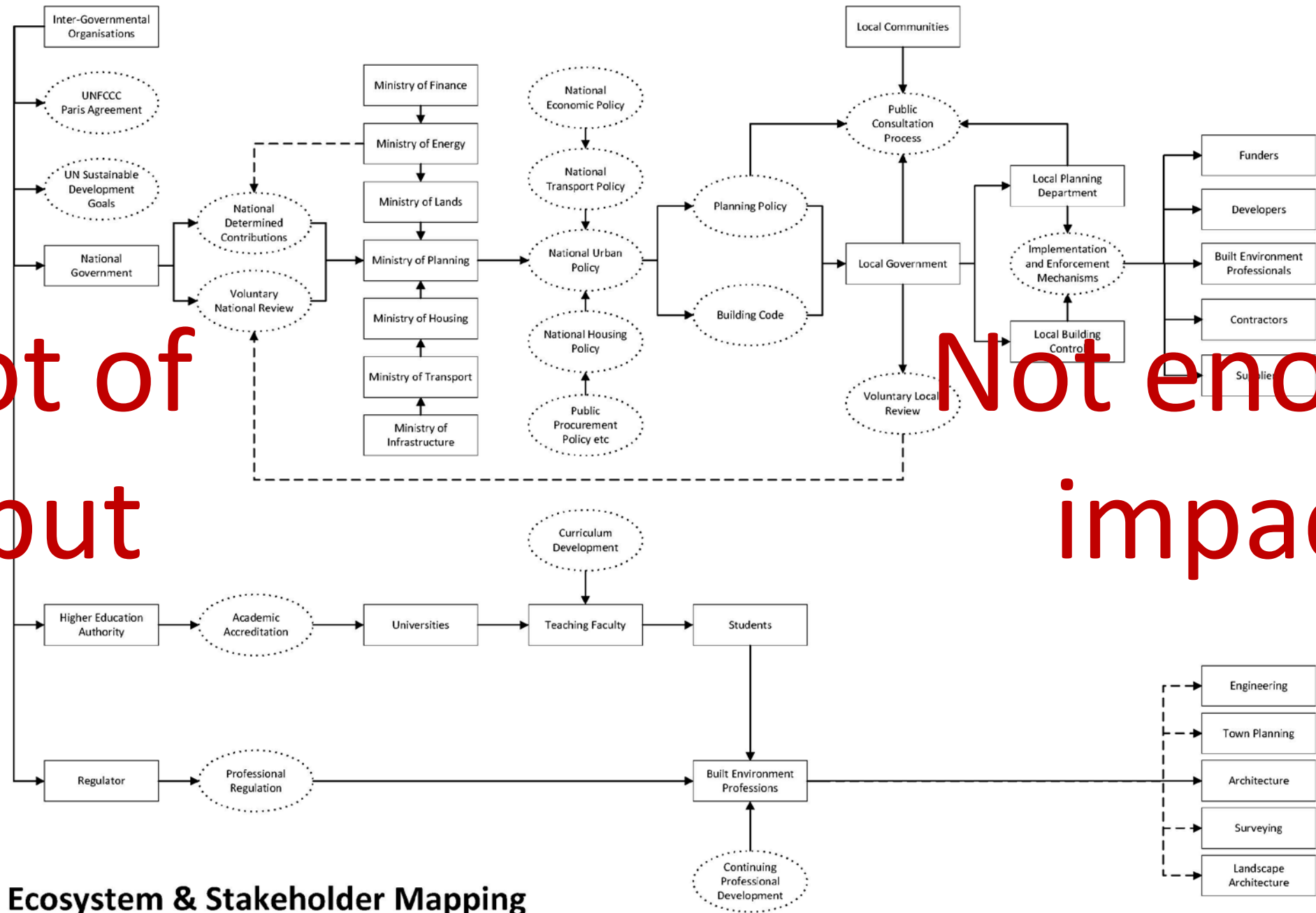
Source: CHOGM 2022, 'Declaration on Sustainable Urbanisation'



*Mobilising the Commonwealth to advance sustainable development as a driver of development*

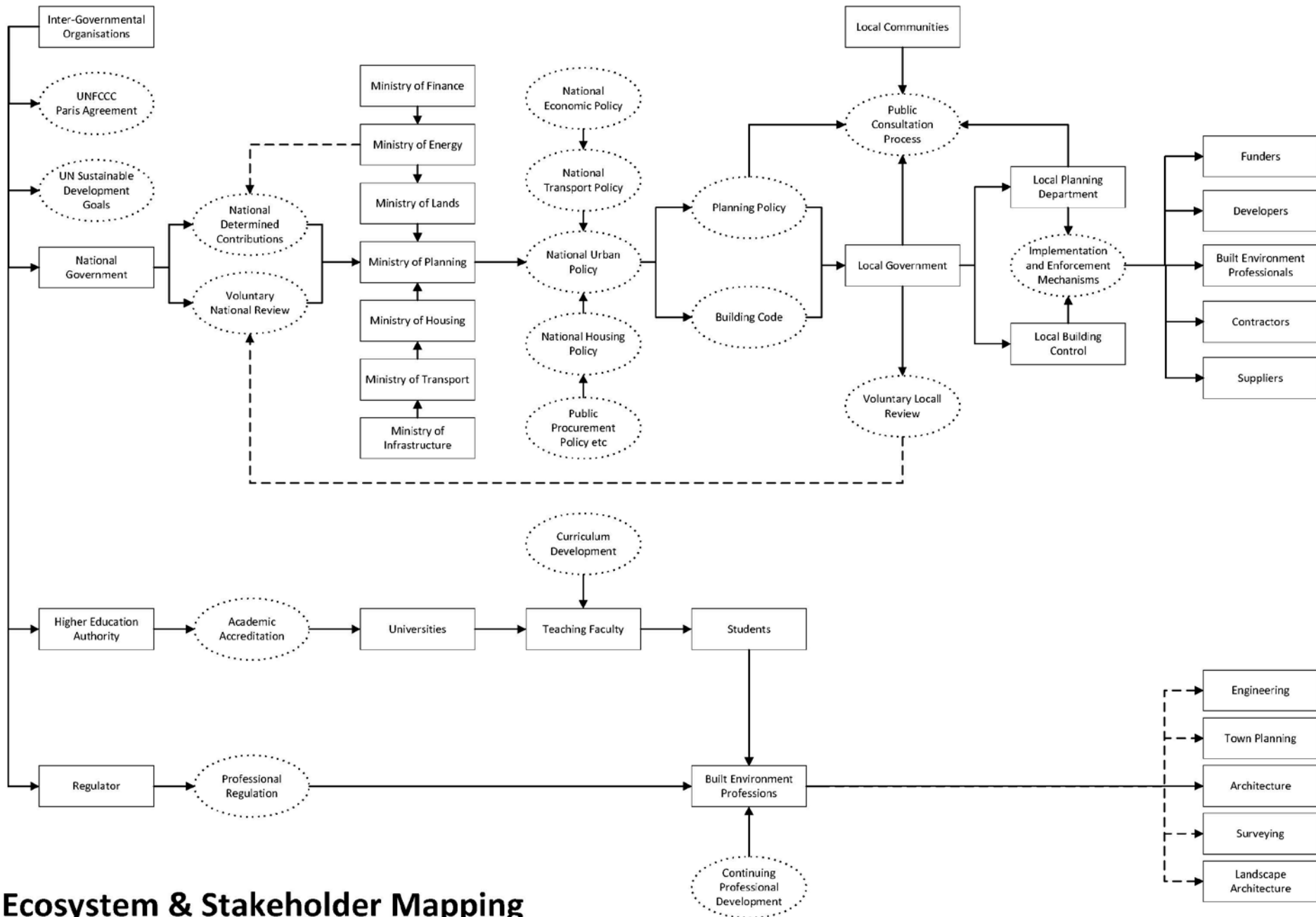
A lot of  
input

Not enough  
impact



Ecosystem & Stakeholder Mapping





## Ecosystem & Stakeholder Mapping

**RESPONDING TO RAPID URBANISATION AND CLIMATE CHANGE**

# **CALL TO ACTION**

**ON SUSTAINABLE URBANISATION  
ACROSS THE COMMONWEALTH**



ASSOCIATION OF COMMONWEALTH UNIVERSITIES

COMMONWEALTH ASSOCIATION OF ARCHITECTS

COMMONWEALTH ASSOCIATION OF PLANNERS

COMMONWEALTH LOCAL GOVERNMENT FORUM