

National Aeronautics and  
Space Administration



# Advancing Science for Disaster Resilience

**Shanna McClain, PhD**  
*Disasters Program Manager*  
UN COPUOS Briefing  
February 2, 2024

# Earth Science to Action Strategy





# NASA DISASTERS PROGRAM

---

Co-develop operational tools to scale disaster management decisions that reduce impacts to communities

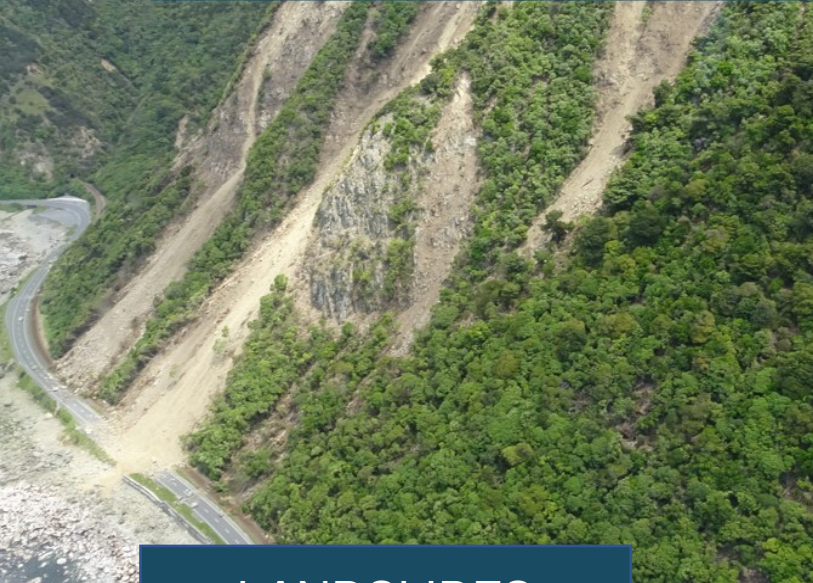
Provide near-real time science and technological support to operational responders during active disasters

Foster partnerships and build collective knowledge and capabilities for strengthening global disaster resilience





# DISASTER SCIENCE TO ACTION PORTFOLIO



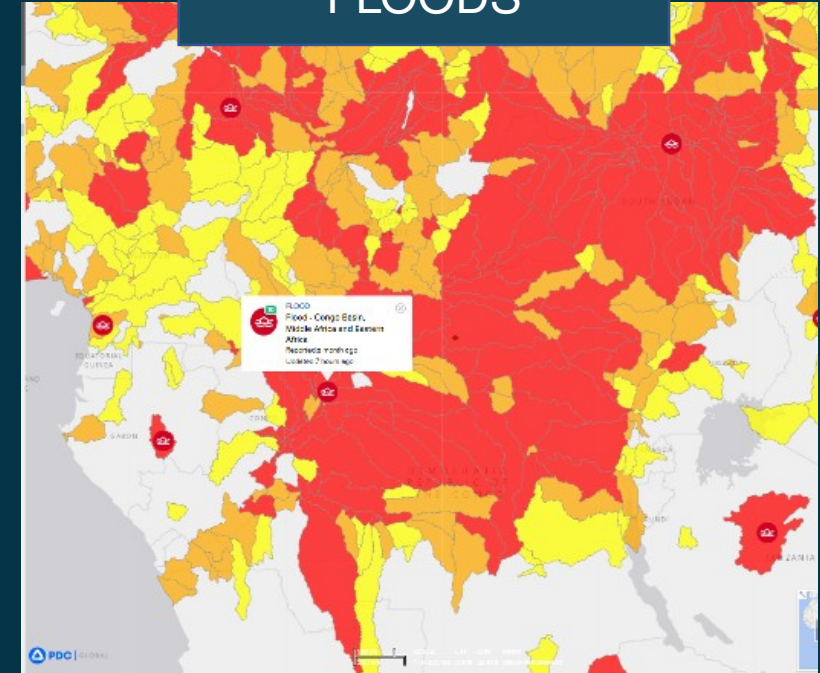
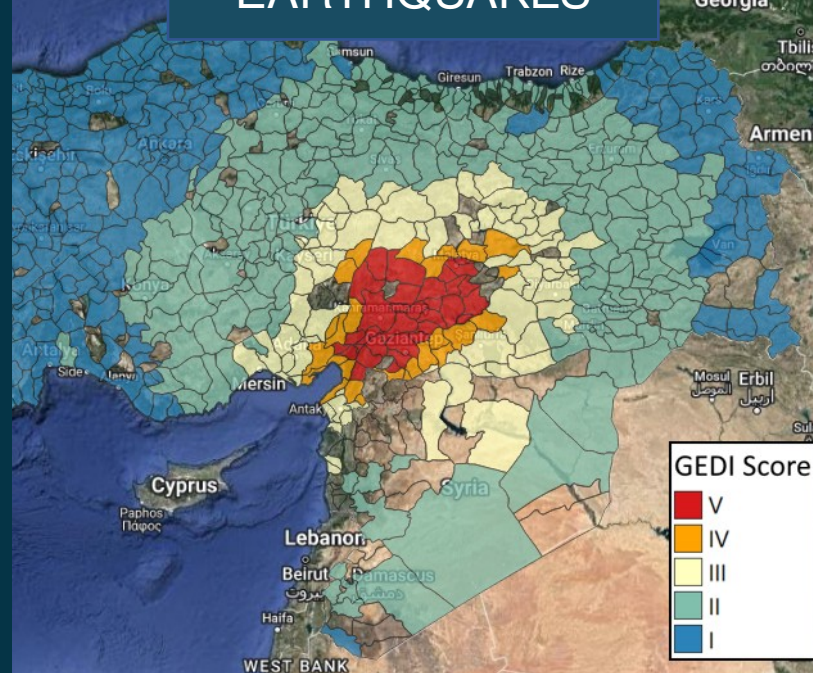
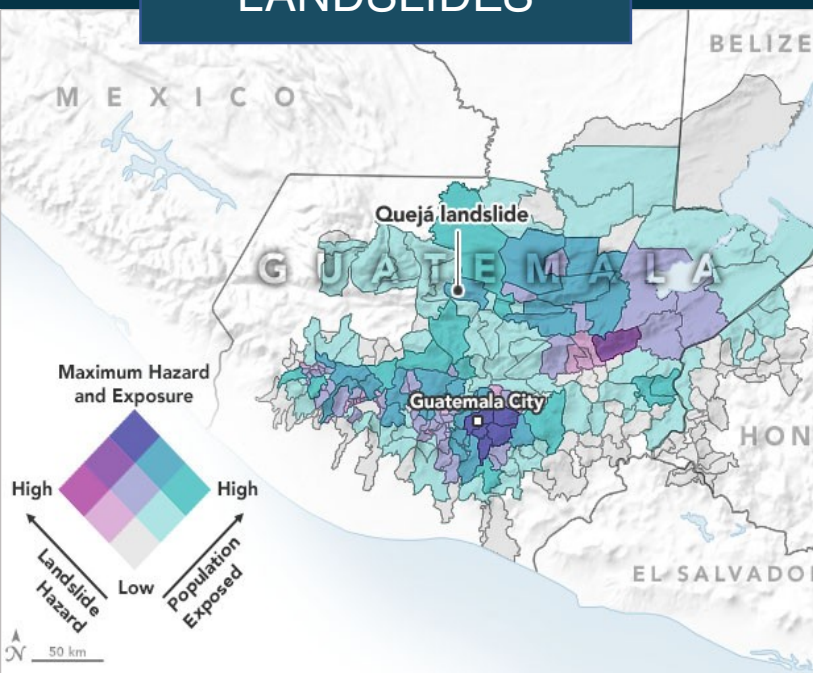
LANDSLIDES



EARTHQUAKES



FLOODS





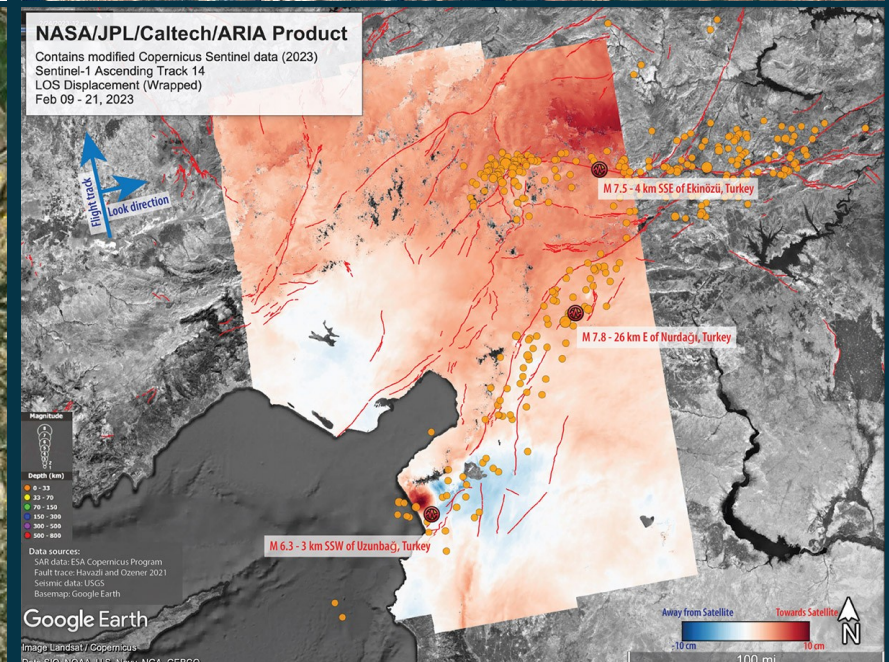
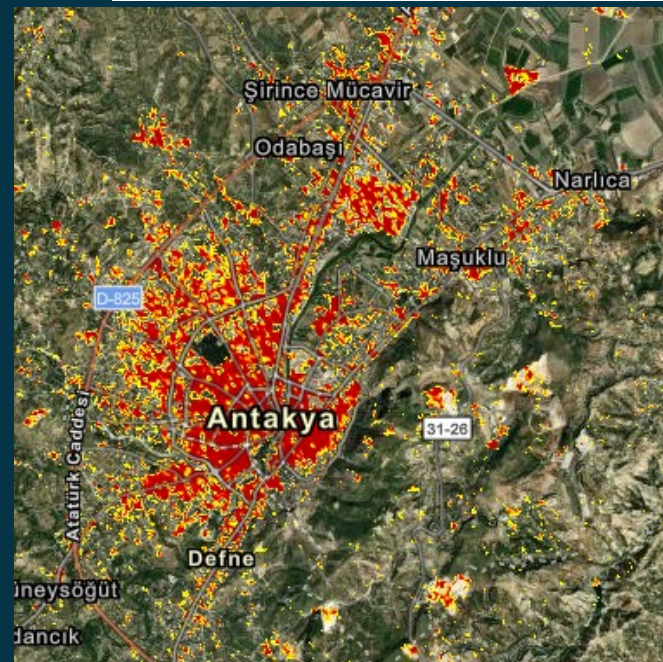
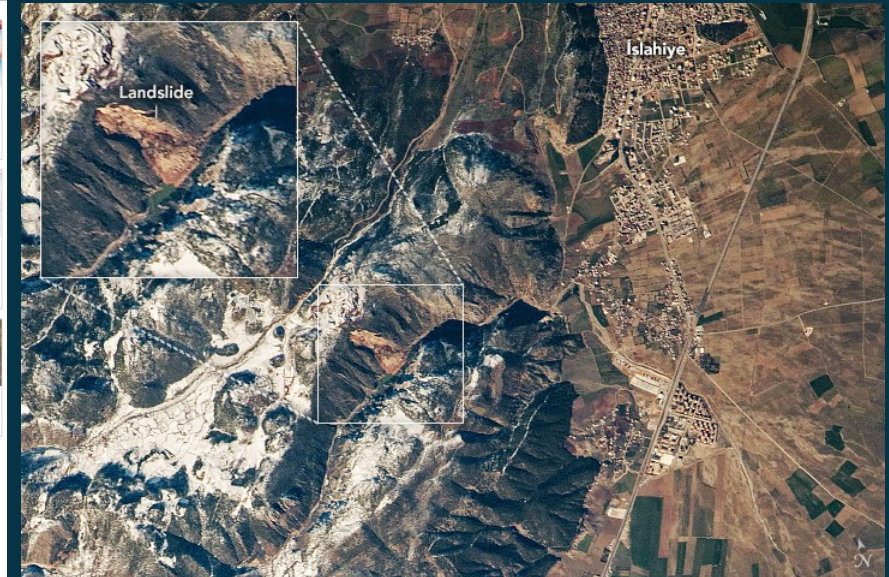
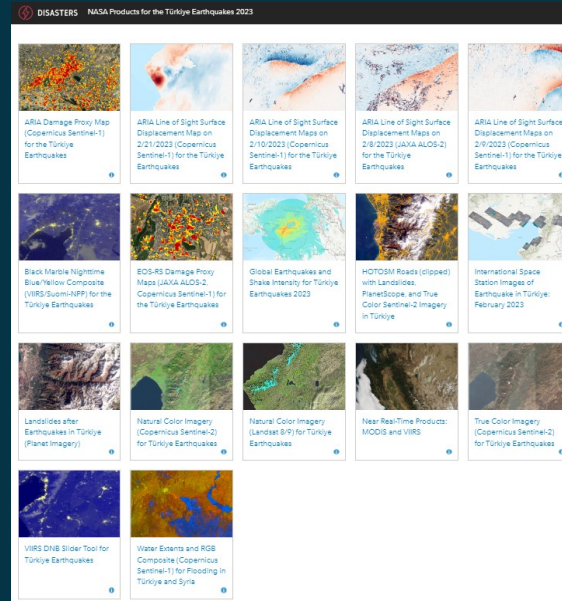
# DISASTER RESPONSE COORDINATION SYSTEM (DRCS)

## TÜRKİYE & SYRIA EARTHQUAKES 2023

**M7.3 earthquake** and hundreds of aftershocks, caused over 50,000 casualties.

Stakeholders included USAID, US State Dept., USGS, NIST, California Seismic Safety Commission, the World Central Kitchen, Miyamoto Global Disaster Relief, and others

Provided over 17-event based tailored products and services based on partner needs.





# DISASTER RESPONSE COORDINATION SYSTEM (DRCS)

## Hunga Tonga Hunga Ha'Pai Submarine Volcano

In January 2022 an explosive eruption of the underwater volcano with the power of 10-15 megatons and a ~36-mile-high plume. Most powerful eruption of the satellite era.

Lofted volcanic ash and gas launched into the atmosphere causing heavy ashfall and sever lightning storms in Tonga, while global impacts included the triggering of tsunamis, meteotsunamis, and atmospheric gravity waves across the globe.

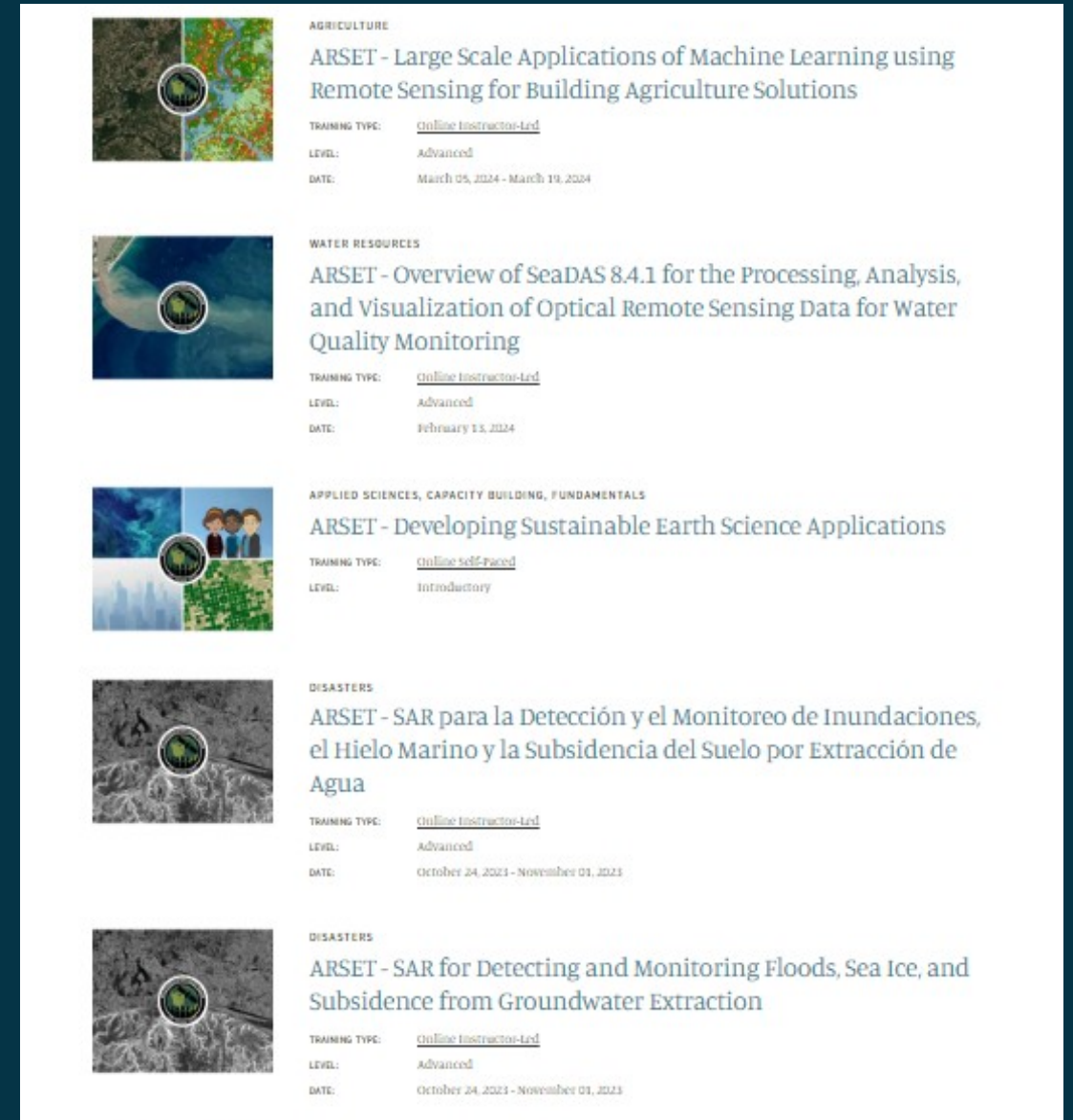
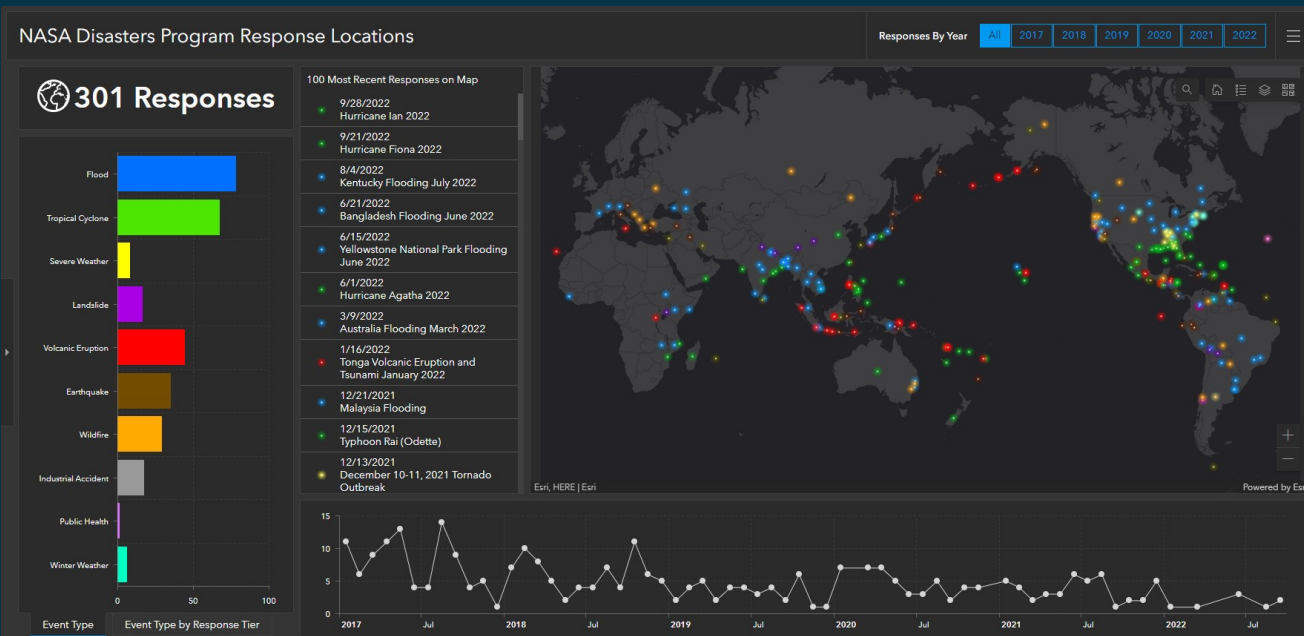
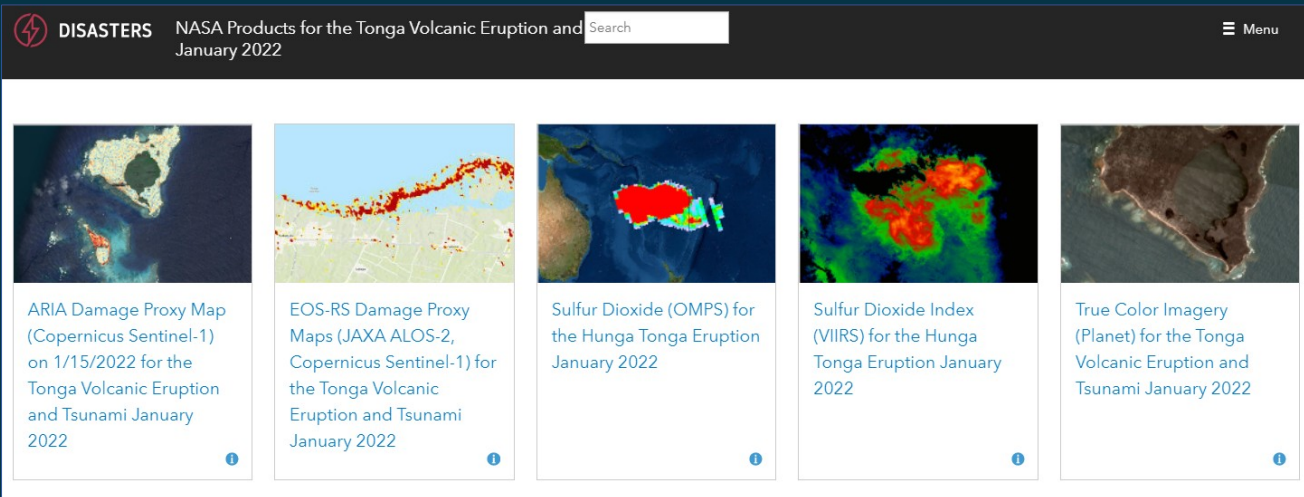
11 event-based services

- SAR-derived damage proxy maps
- Surface Disturbance Maps
- SO2 emissions data





# PARTNERSHIP & LEARNING PLATFORM





shanna.n.mcclain@nasa.gov

