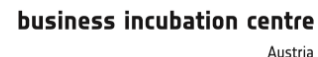




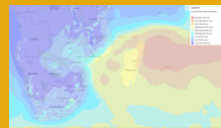


## Disaster risk management 2.0: why linking new data sources makes a difference



# Motivation

Early February 2017



- 1) No central source for emergency info?
- 2) Who cares for 'my' emergency?
- 3) Satellite data vs. human behavior?

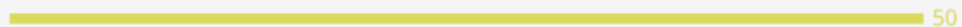




Earthquake



Tornado



Volcano

0

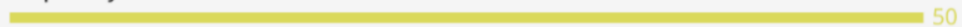
Extratropical Cyclone

0

Hail

0

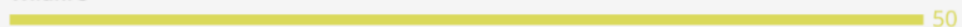
Tropical Cyclone



Lightning



Wildfire



Tsunami

0

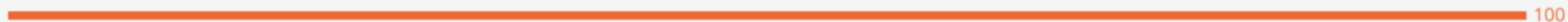
Storm Surge

0

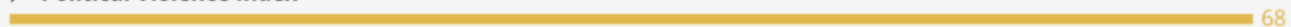
Flood

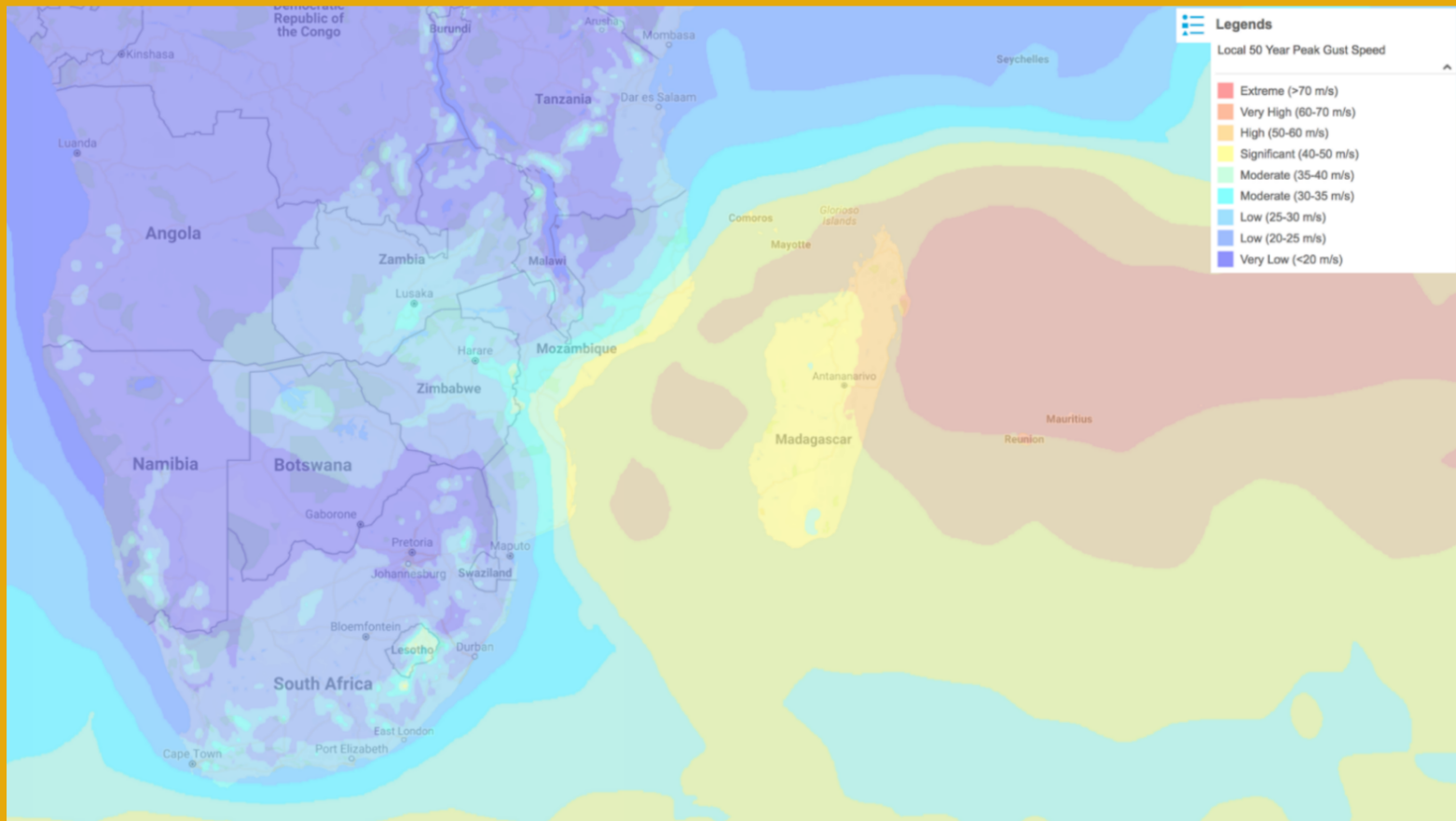
0

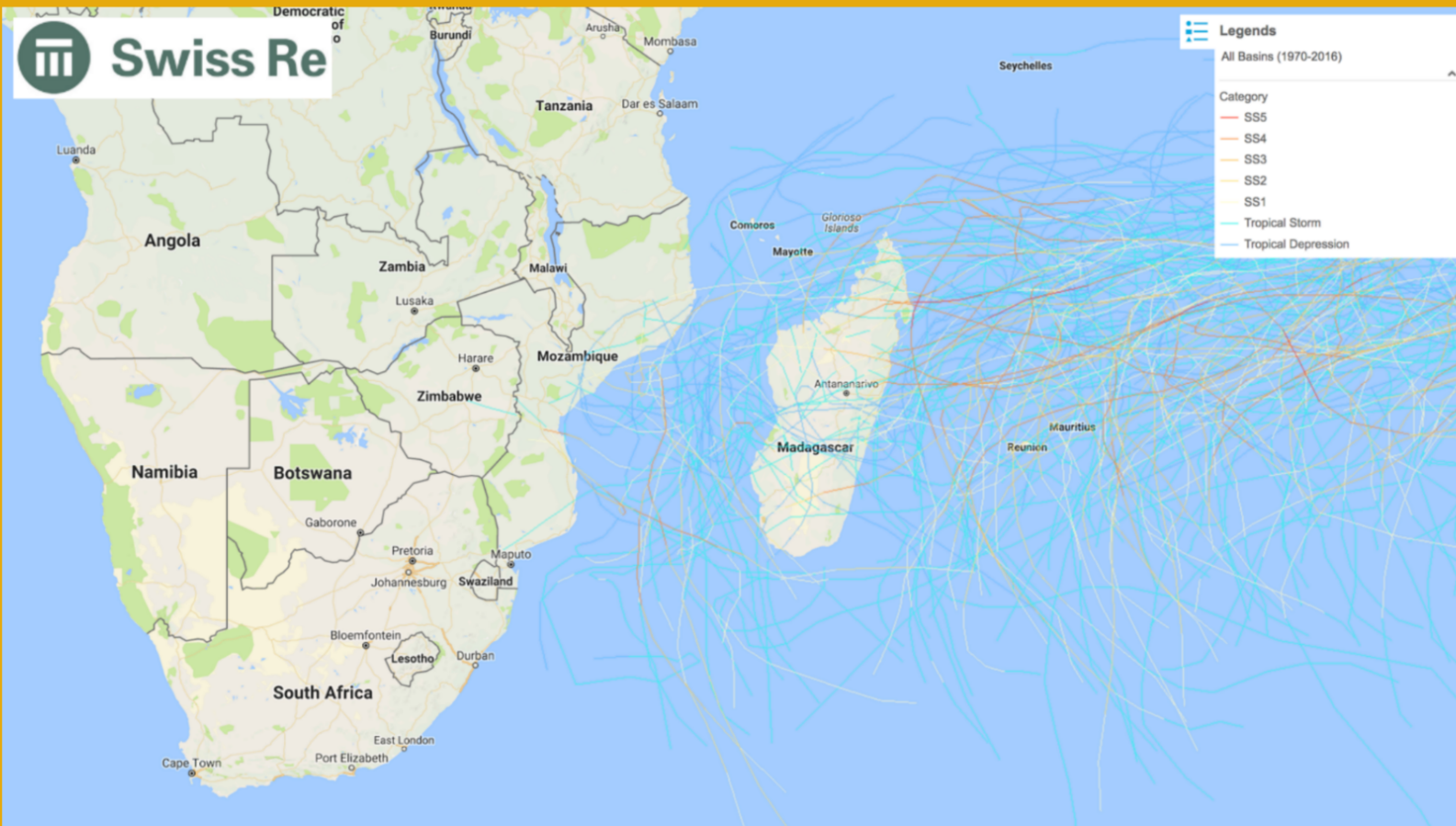
Flash Flood



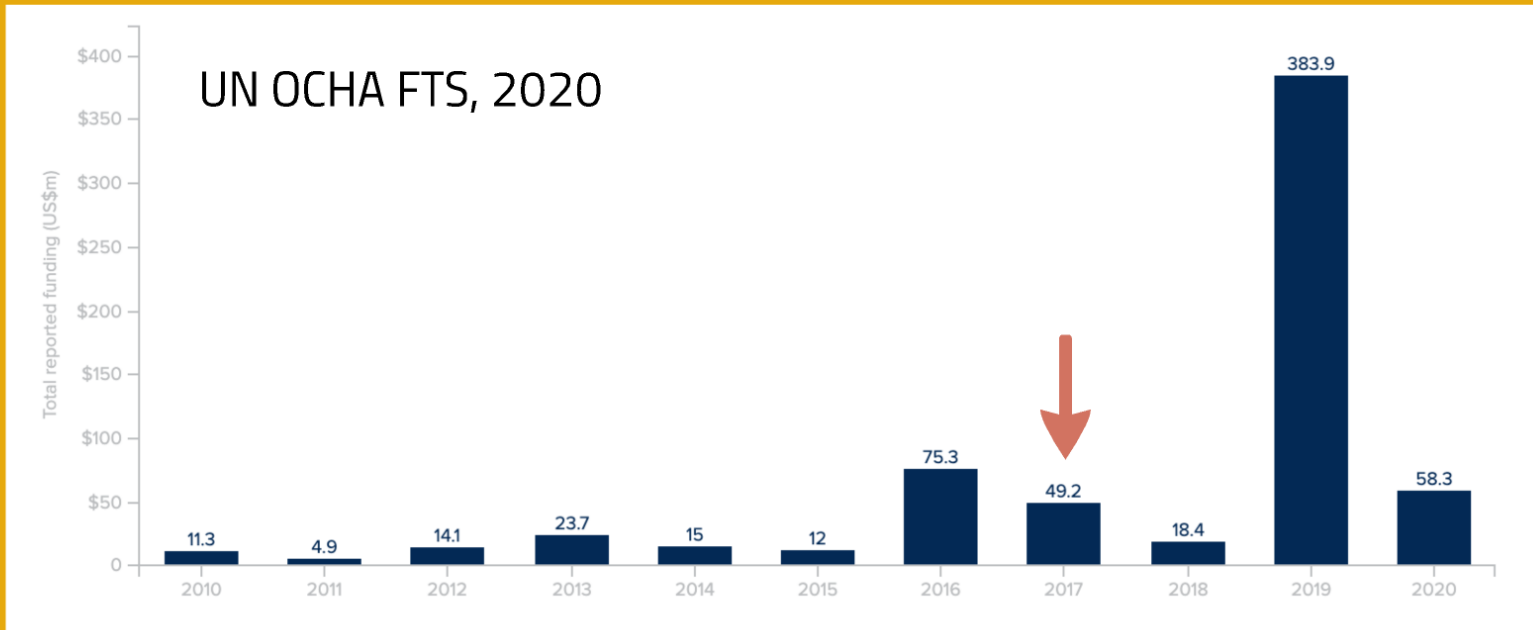
► Political Violence Index













- 1) No central source for emergency info?
- 2) Who cares for 'my' emergency?
- 3) Satellite data vs. human behavior?

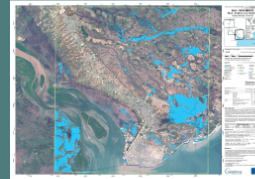


## EO and humanitarian Needs

What is happening vs. what is happening to X

Satellite data require context and interpretation

Emergency data are shared  
via dozens of portals



Technical capacities are low (black boxes?)

Timely, visual evidence



## Data Sources

Pre-event image: Sentinel 2B (2018) (acquired on 02/12/2018 at 07:32 UTC, GSD 10 m, approx. 0% cloud coverage in Aol, provided under COPERNICUS by the European Union and ESA.

Post-event image: Sentinel-1B (2019) (acquired on 19/03/2019 at 16:14 UTC, GSD 10 m) provided under COPERNICUS by the European Union and ESA.

Sentinel-1B (2019) (acquired on 20/03/2019 at 03:08 UTC, GSD 10 m) provided under COPERNICUS by the European Union and ESA.

Base vector layers: OpenStreetMap © OpenStreetMap contributors, Wikimapia.org, GeoNames 2015, refined by the producer.

Inset maps: JRC 2013, Natural Earth 2012, GeoNames 2013.

Population data: GHS Population Grid © European Commission, 2015  
[http://data.europa.eu/89h/jrc-ghsl-ghs\\_pop\\_gpw4\\_globe\\_r2015a](http://data.europa.eu/89h/jrc-ghsl-ghs_pop_gpw4_globe_r2015a).

Digital Elevation Model: SRTM (90 m) (NASA/USGS)

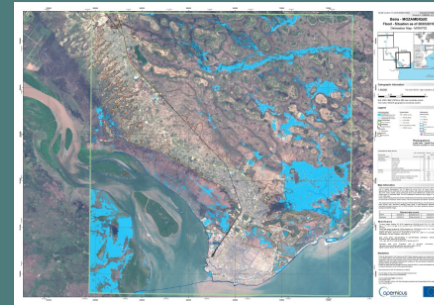
## Disclaimer



What is happening vs. what is happening to X

Satellite data require context and interpretation

Emergency data are shared  
via dozens of portals

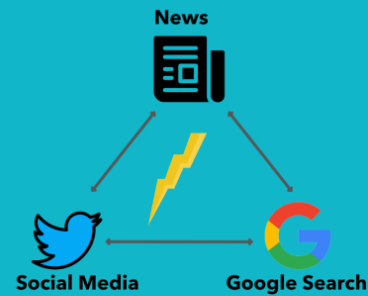


Technical capacities are low (black boxes?)

Timely, visual evidence



# Human Behavior



People talk about their emotions, risk perception, ideas, behavior, etc. online

Mobile connectivity is rapidly increasing in low-income countries

(Social) media analysis must extend beyond the epicenter of disasters



# From Data to actionable Knowledge

- TB of satellite data/day
  - Model data/forecasts
  - 6 Bn Google searches/day
  - >500 Mio Tweets/day
  - Hundreds of news reports
  - Dozens of emergency reports
- 
- Where do I find evidence for disaster impacts?
  - Can I trust the data source?
  - Is there public interest? Can I generate it?
  - How does interest relate to behavior?
  - Where and who are the new donors?

## Use Case Hurricane Amanda



Early Warning



Human Development Index



El Salvador  
Guatemala

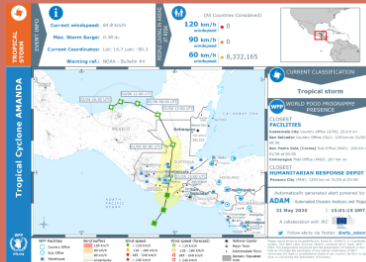


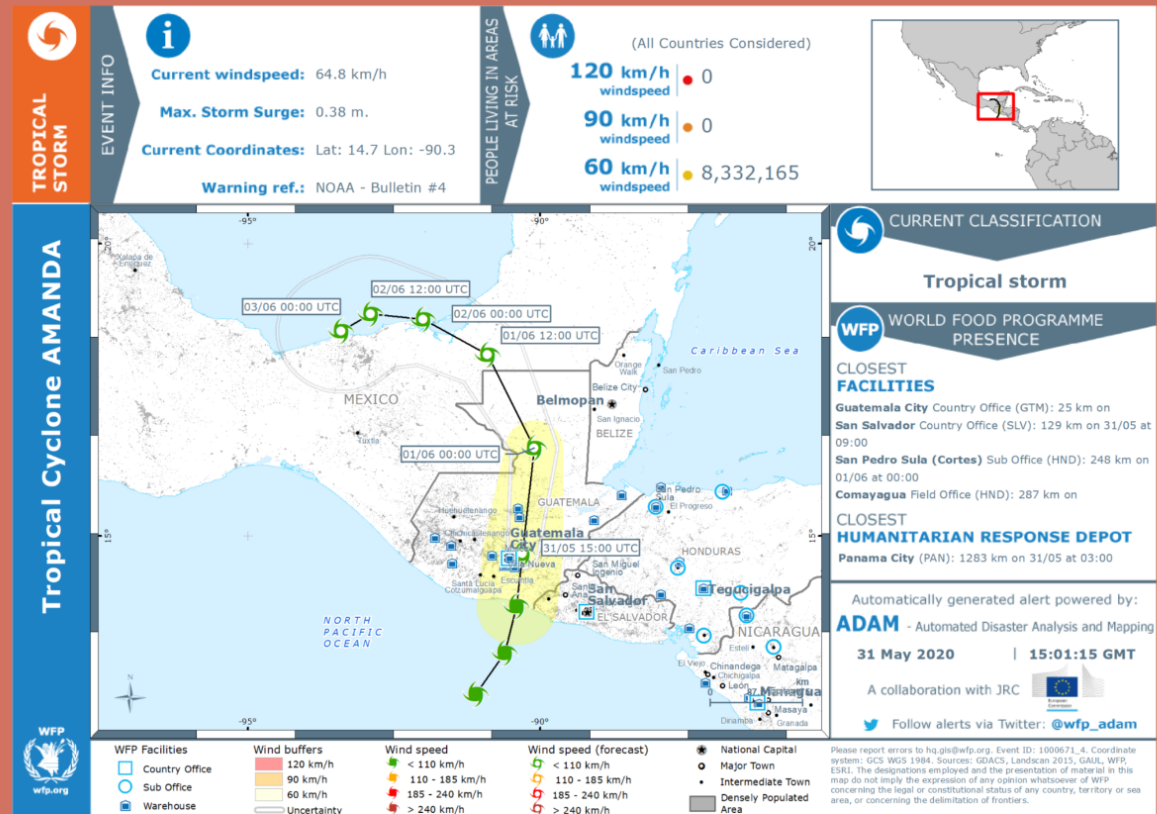


- TB of satellite data/day
- Model data/forecasts
- 6 Bn Google searches/day
- >500 Mio Tweets/day
- Hundreds of news reports
- Dozens of emergency reports

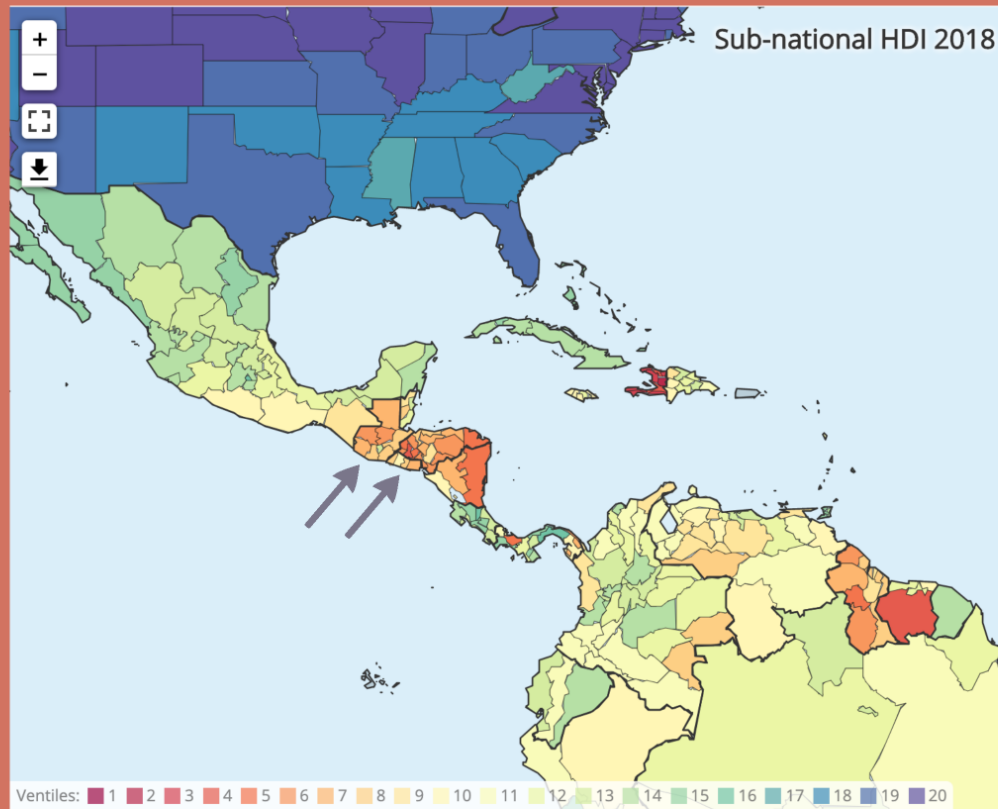
- Where do I find evidence for disaster impacts?
- Can I trust the data source?
- Is there public interest? Can I generate it?
- How does interest relate to behavior?
- Where and who are the new donors?

# Use Case Hurricane Amanda



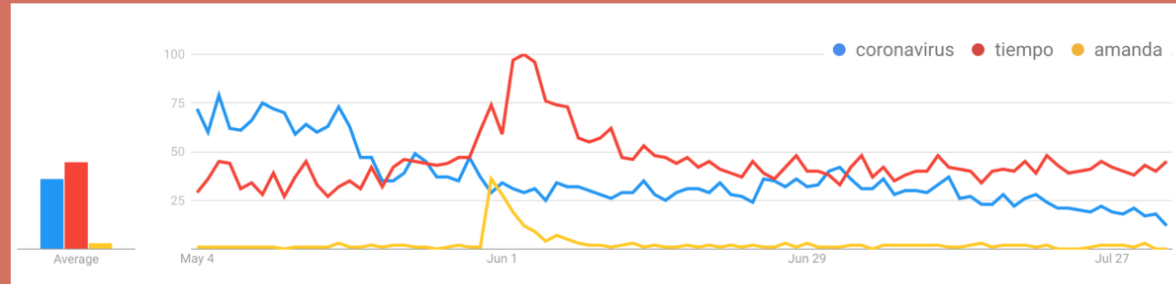


# Early Warning

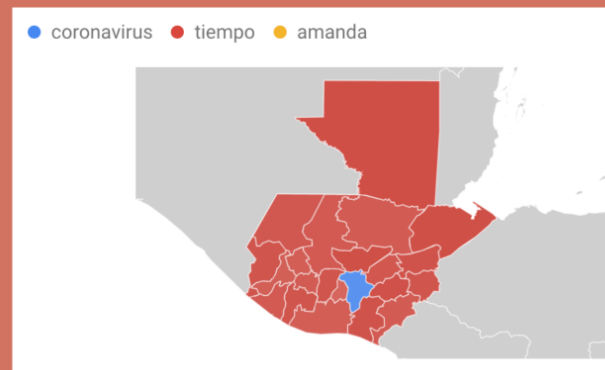


# Human Development Index



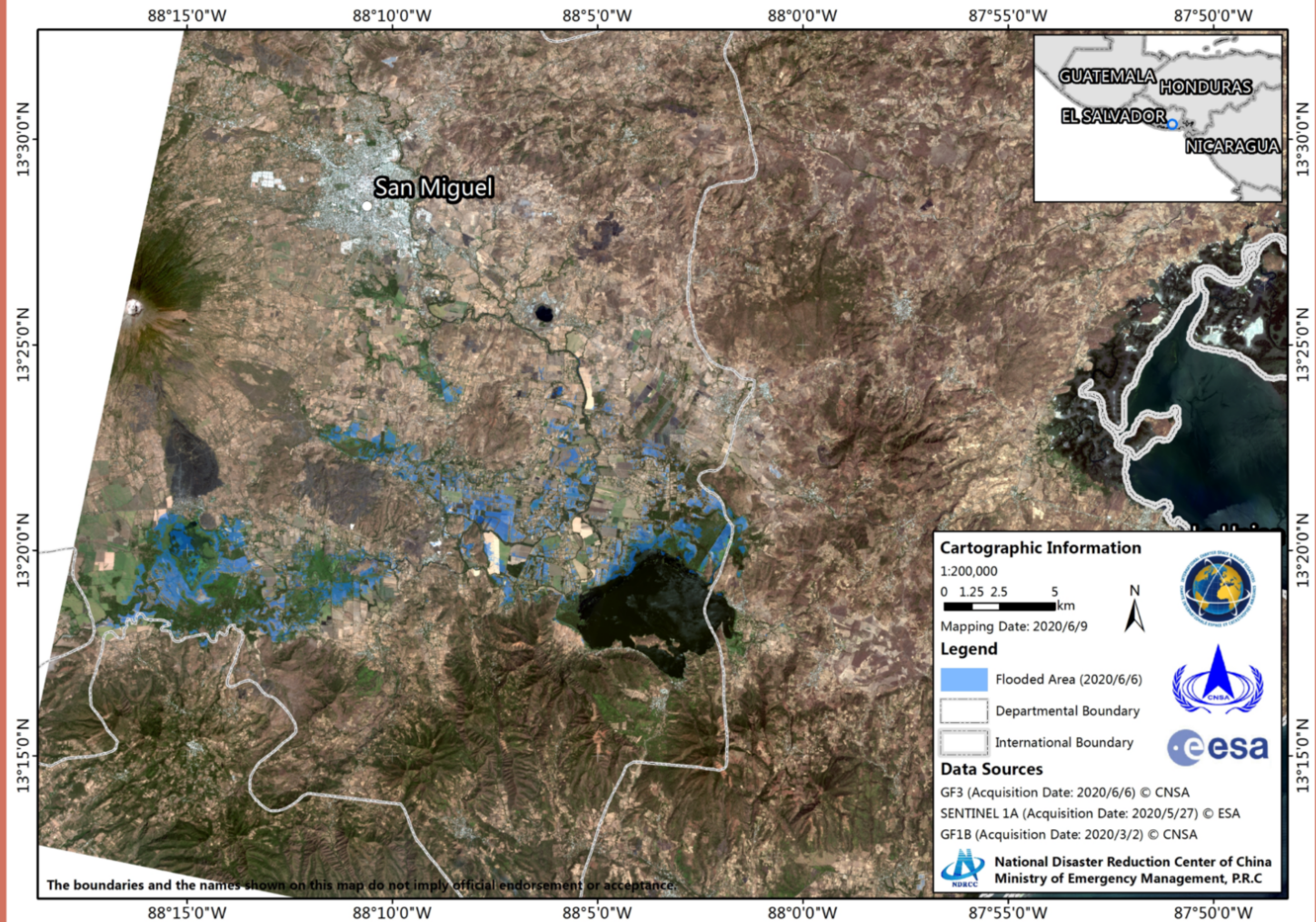


El Salvador

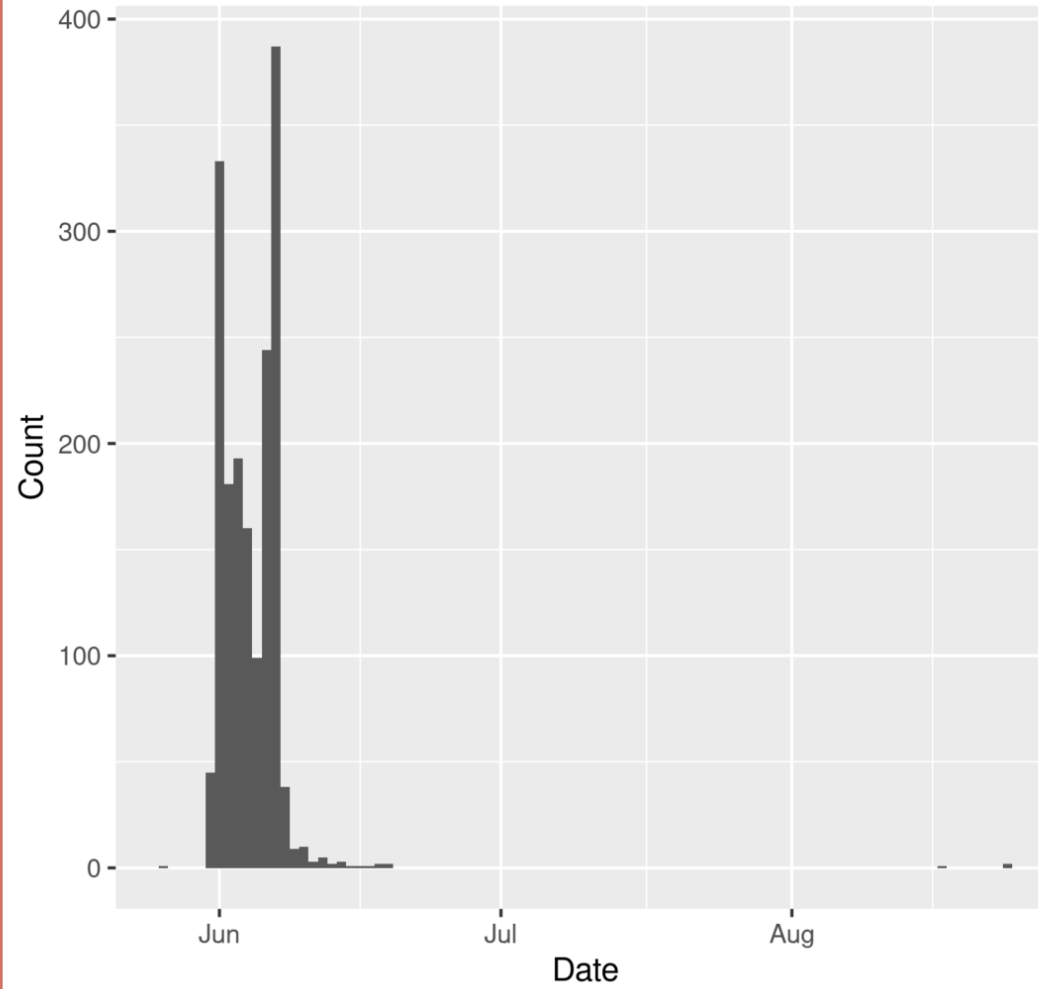


Guatemala

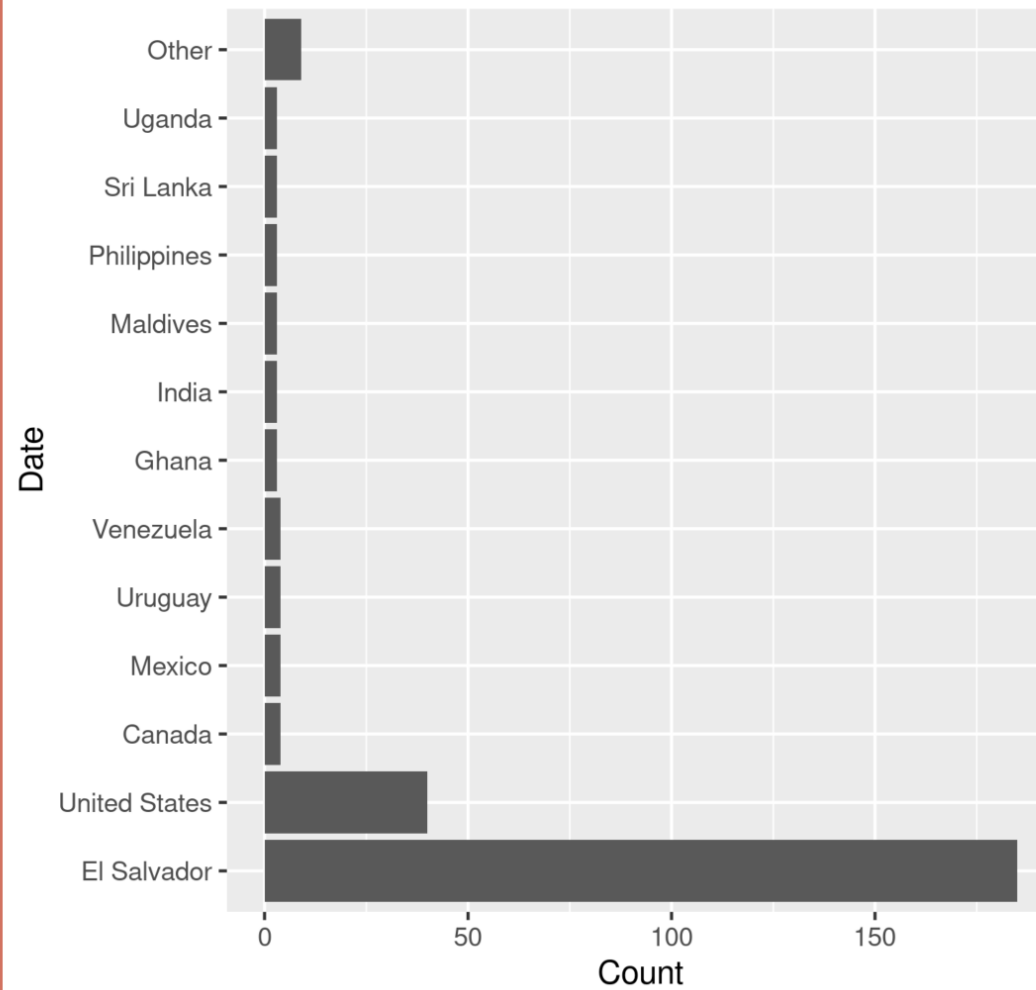
# Call-755 Flood in EL SALVADOR - Flooded Area of AOI ID:3\_06



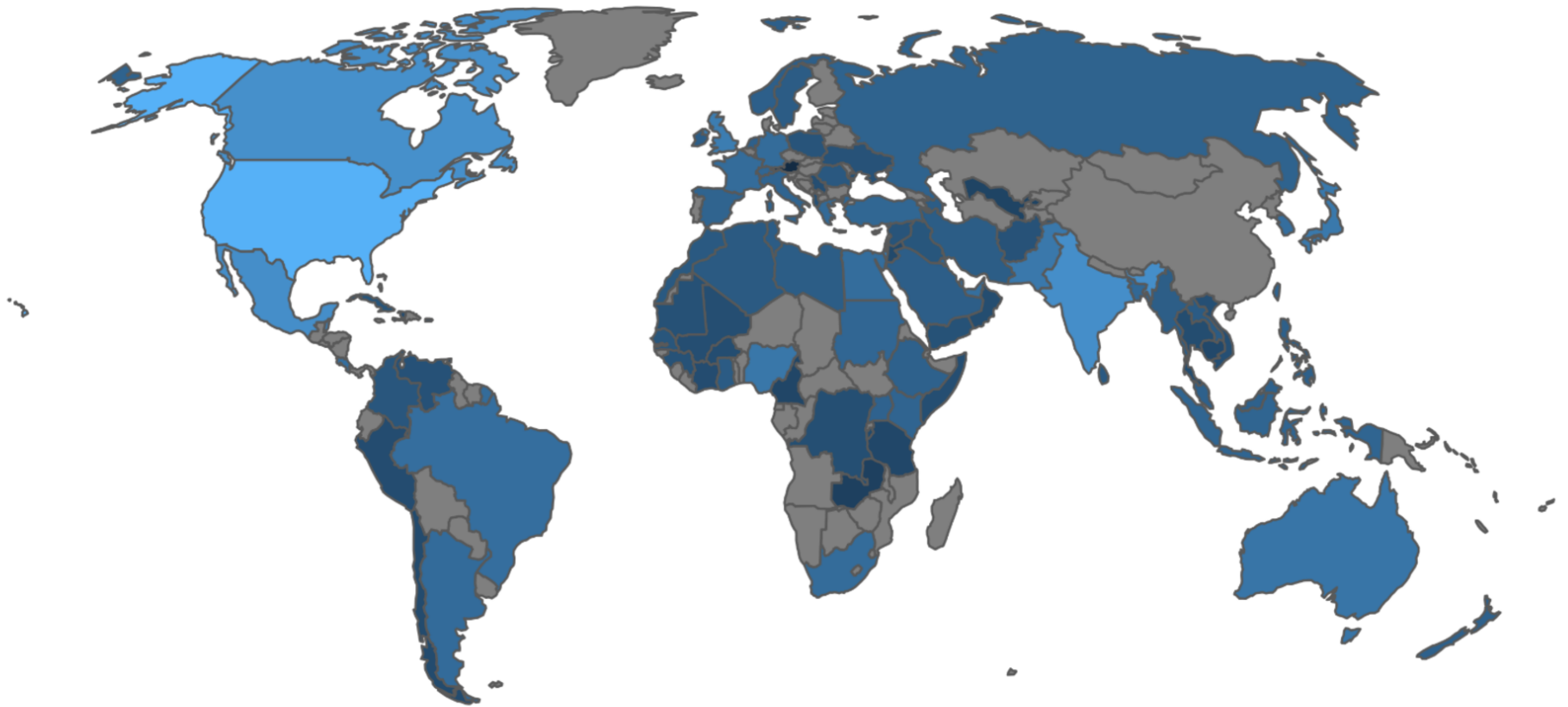
Number of Articles Mentioning Tropical Storm Amanda



Twitter Volume by Country



Estimated Number of People in Each Country Who Engaged With Content Related to Tropical Storm Amanda





# Added-Value



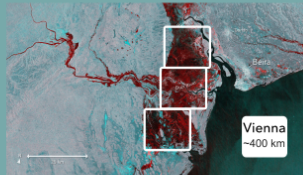
Centralize, harmonize, contextualize  
emergency information



Understand social interest

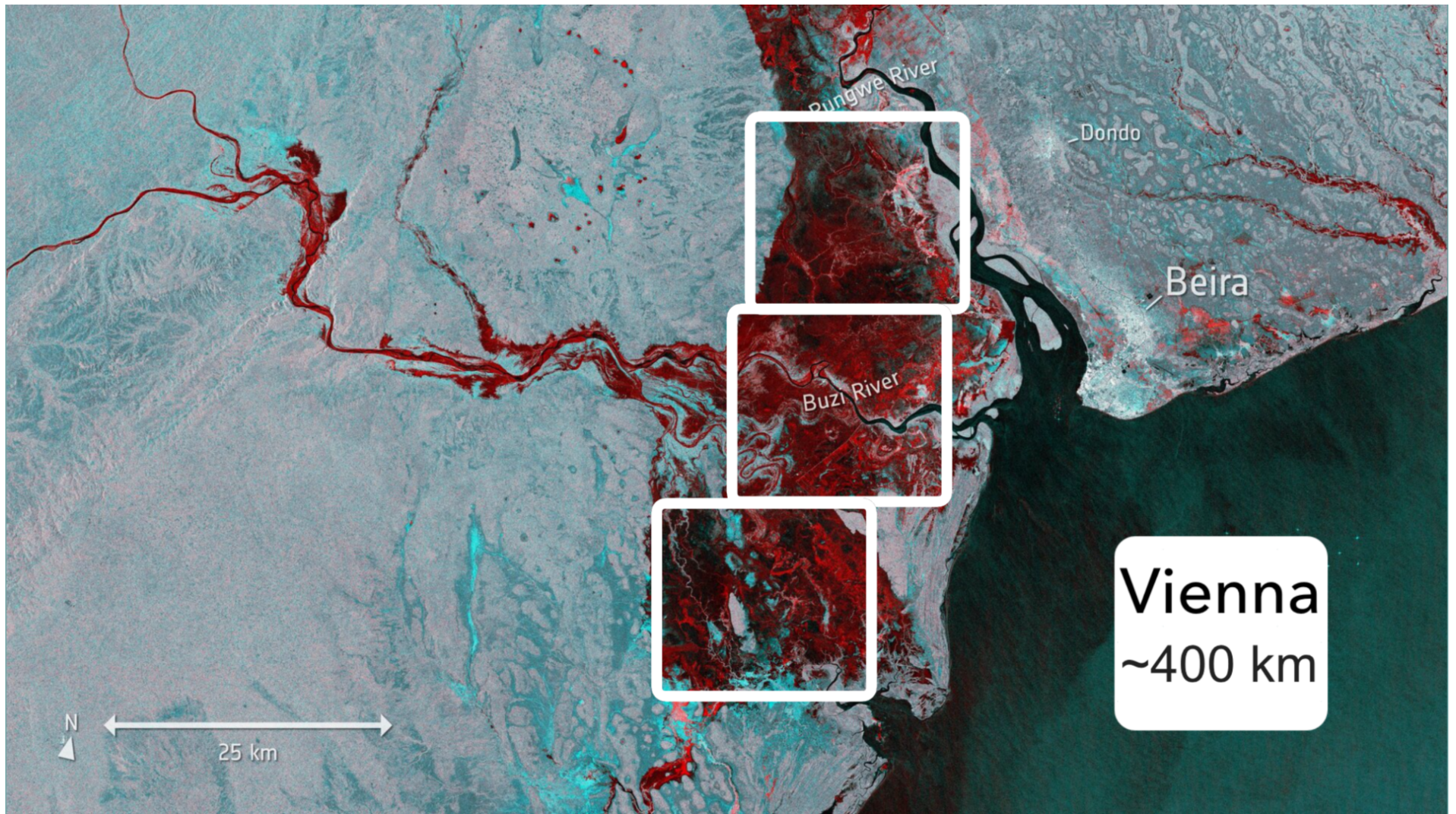


Emergency data vs  
human behavior



Satellite-based  
storytelling







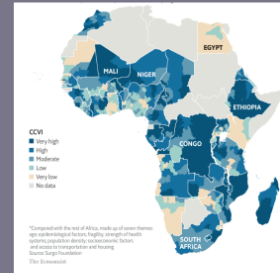
# Conclusion and next Steps

Satellite data benefit from links to  
socioeconomic info AND social interest

- > disaster preparedness
- > disaster risk financing/fundraising
- > communications
- ...a 'new normal'?

We are moving towards  
predictive analytics

Actionable info: Data providers,  
analysts/researchers and end users  
need to collaborate



markus.enenkel@perigee.at



www.perigee.at



# next Steps

Satellite data benefit from links to socioeconomic info AND social interest

--> disaster preparedness

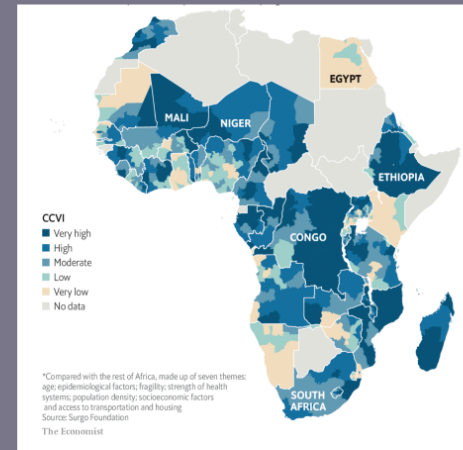
--> disaster risk financing/fundraising

--> communications

...a 'new normal'?

We are moving towards predictive analytics

Actionable info: Data providers, analysts/researchers and end users need to collaborate





markus.enenkel@perigee.at



www.perigee.at

