



# Test Data Suite for Software Development and Verification

Patrick Seitzer  
University of Michigan

## Recommendation from SATCON2 Algorithms WG

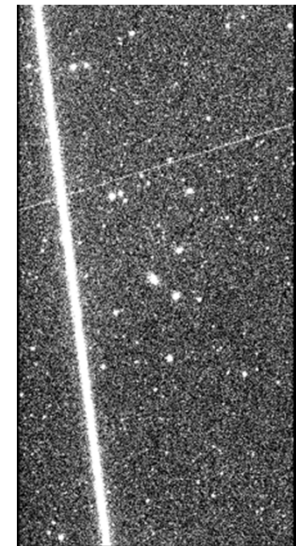
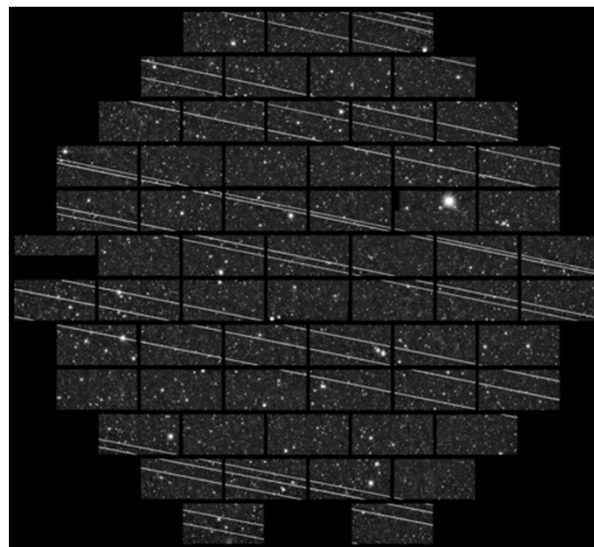
- "early development of a test dataset repository is a priority"
- "Validate algorithms and and compare performance of different algorithms"
- Can be real data or simulated data with streaks added.
- Best if pair of images – one with streak and one without to test **TrailMask**.

## Will cover range of telescopes and instruments types



*All sky camera*

*DECam DELVE Survey/CTIO/AURA?NSF*



*DECam single CCD*



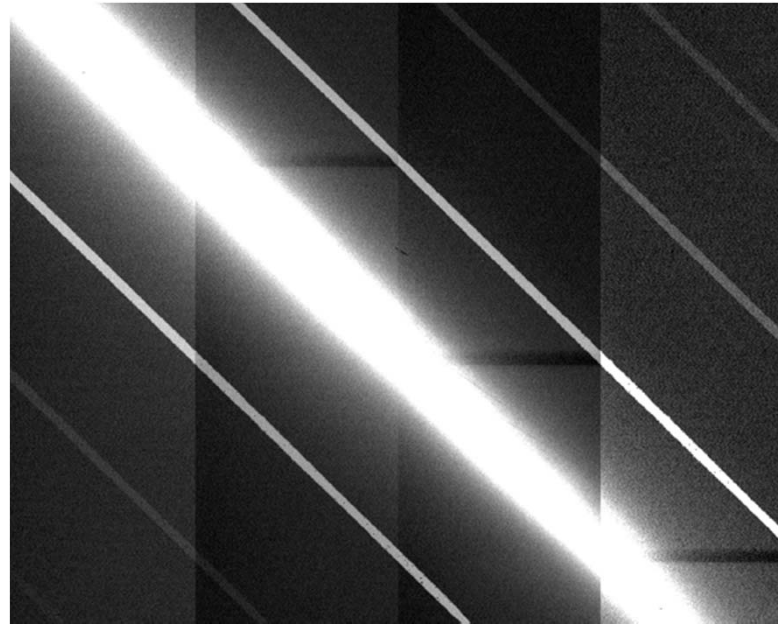
## Requirements for inclusion

- Has a streak!
- Instrumental signature removed – bias subtracted and flat fielded.
- Full metadata
  - Site location in geodetic cords – lat, long, and altitude (WGS84).
  - Full image World Coordinate System (WCS)
  - Exposure start time and duration – ref for time (GPS)?
  - Optical system – telescope aperture and focal length, filter, etc.
  - Photometric zeropoint.
  - Gain, readnoise.
- Challenging cases – non uniform streaks.





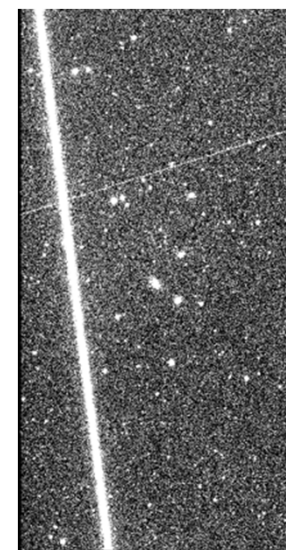
Simulations – you know what the right answer is!



*Rubin Observatory/LSST*

## Satellite pass test suite to test PassPredict

- Can you predict when/where a satellite will pass a telescope/instrument?
- Supply:
  - Image(s) with trails.
  - Observing configuration (location, telescope, camera, pointing, time,....
  - Ephemerides from database or specific to this observation.
- Predict time, where (RA, Dec), brightness (if possible).







## Dark and Quiet Skies for Science and Society II

Implementing the recommendations

La Palma, Canary Islands, Spain

3 - 7, October, 2021

### Summary

- Repository of test data at one of the existing astronomical data centers.
- Useful for testing and refining algorithms.
- For TrailMask – pairs of images (one with trail, one without) with full metadata.
- For PassPredict – image with full metadata and ephemerides.



Thank you for  
your  
attention!