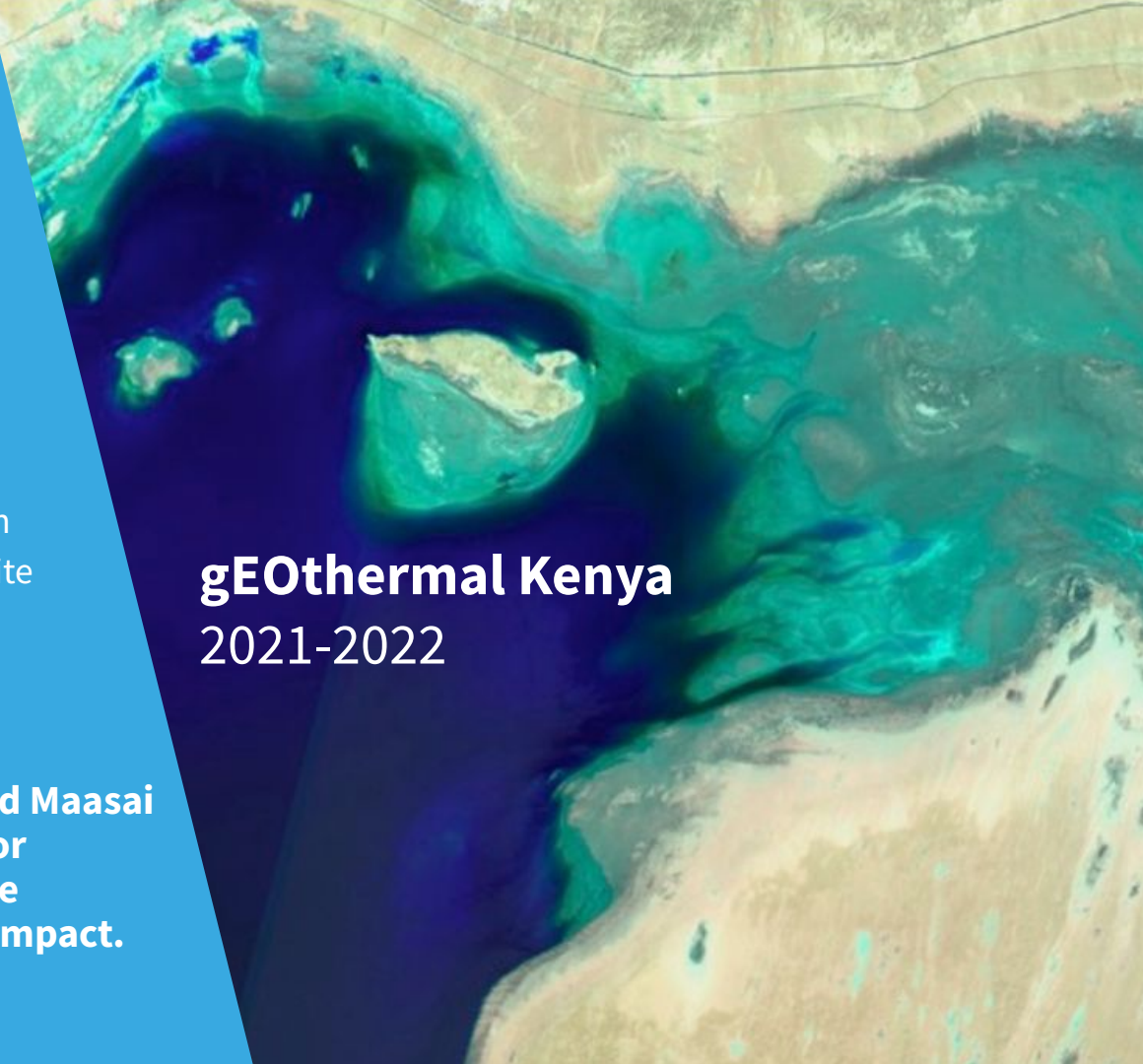




To support the socially, environmentally, and economically sustainable growth of the Kenyan geothermal sector through improved remote site monitoring and management.

We worked with the Kenyan National Environment Management Authority and Maasai communities to characterise and monitor land-use around current and prospective geothermal plants to map and forecast impact.

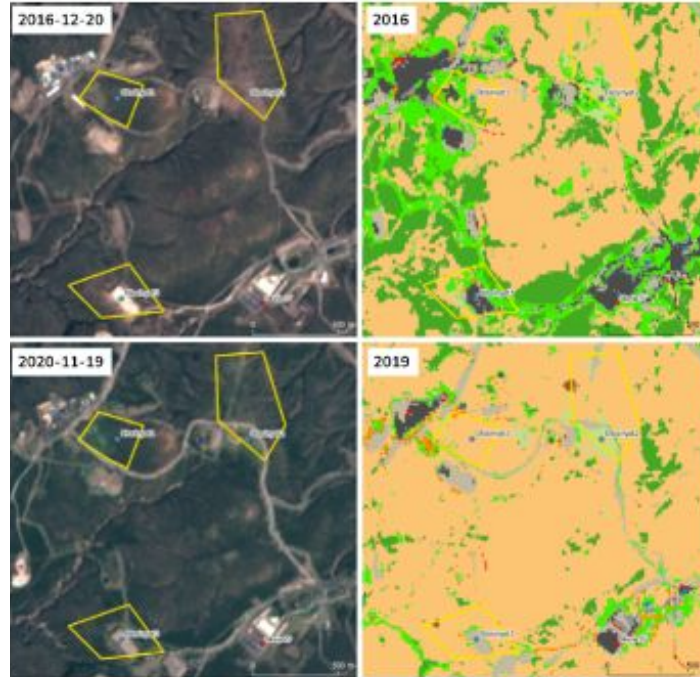
gEOthermal Kenya 2021-2022



gEOthermal Kenya

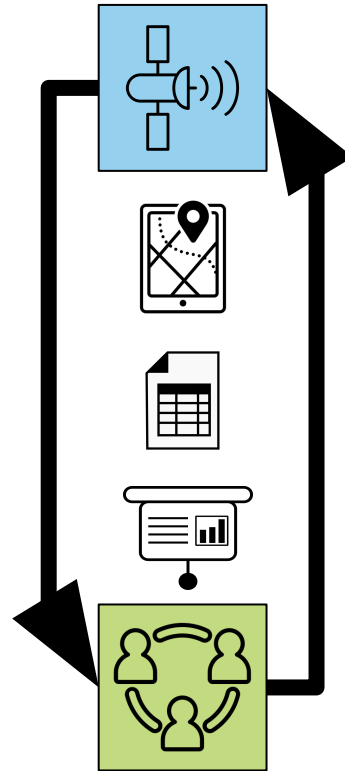
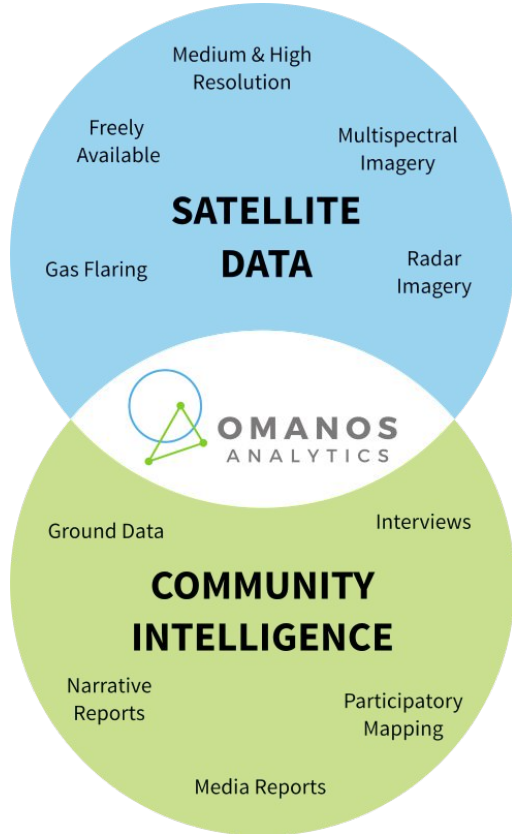


participatory mapping & land classification



- Vegetated lava flow
- Tin buildings
- Tiled buildings
- Stagnant water
- Scrubland
- Pasture
- Livestock corrals
- Industrial infrastructure
- Greenhouses
- Forest
- Crops
- Bare ground

CSI-EO: Community-Sourced Intelligence for Earth Observation



Open-source smartphone app & cloud-based data storage/transfer

EO-enabled Environmental and Social Impact Assessment & Monitoring Framework

Ethical principles for ground data collection



Get in touch

info@omanosanalytics.org

www.omanosanalytics.org

Twitter: @OmanosUK

LinkedIn: Omanos Analytics