

## UN / IAF Workshop

Panel 1 “Solutions for reducing the environmental  
impact of space activities”

11th of October 2024





# With natural disasters, conflicts and violence on the rise, the need for proactive adaptation and resilience solutions has never been greater

## Environment Protection



## Human Protection

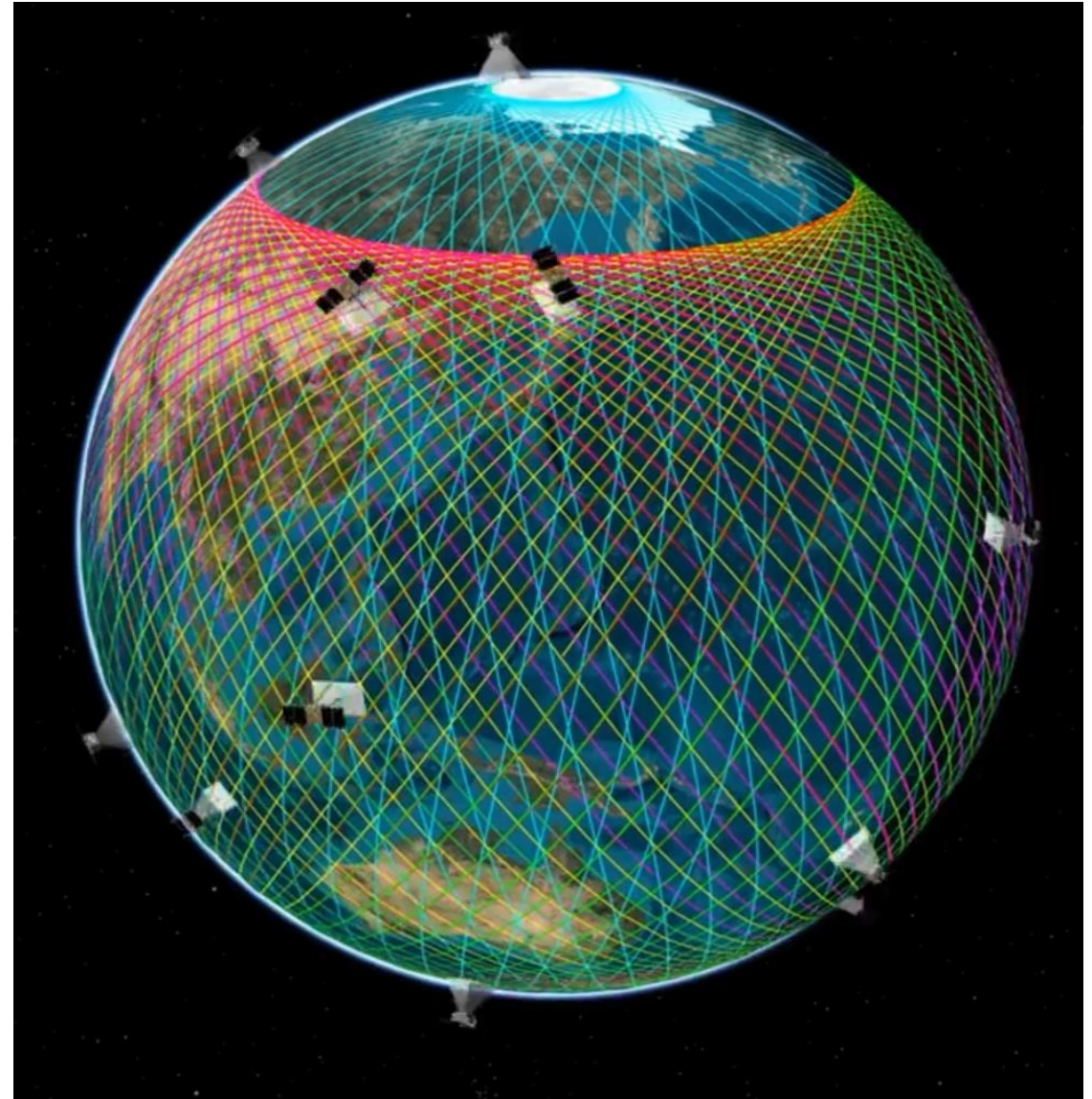
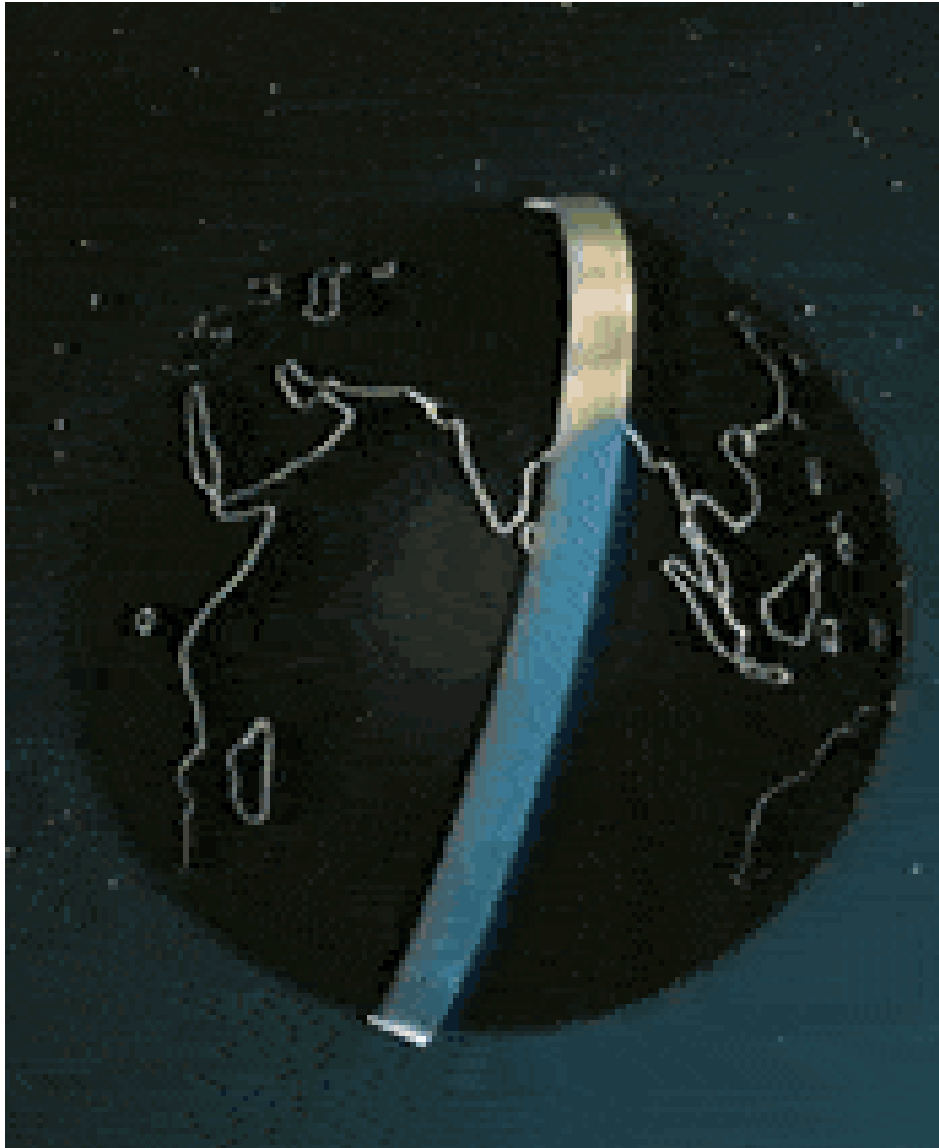


## Territorial Security





# Only constellation deployment enable access to near real time information



# Prométhée Earth Intelligence provides solutions to address needs for space sovereignty and access to near real time information

**Designer and Architect of  
Earth observation systems**



**A holistic end2end approach  
from service to satellite**

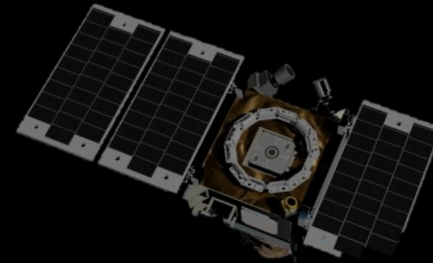


**A system that meets the needs of end  
users**



**Digital platform for enhancing data and  
producing GeoIntelligence services**

**Operator of a constellation of latest-  
generation nanosatellites**



**Performances**



**Simultaneous  
multiple access**



**Very high  
revisit**



**Near real  
time  
acquisition**

**Decision Support Systems**



**Climate  
Risk**



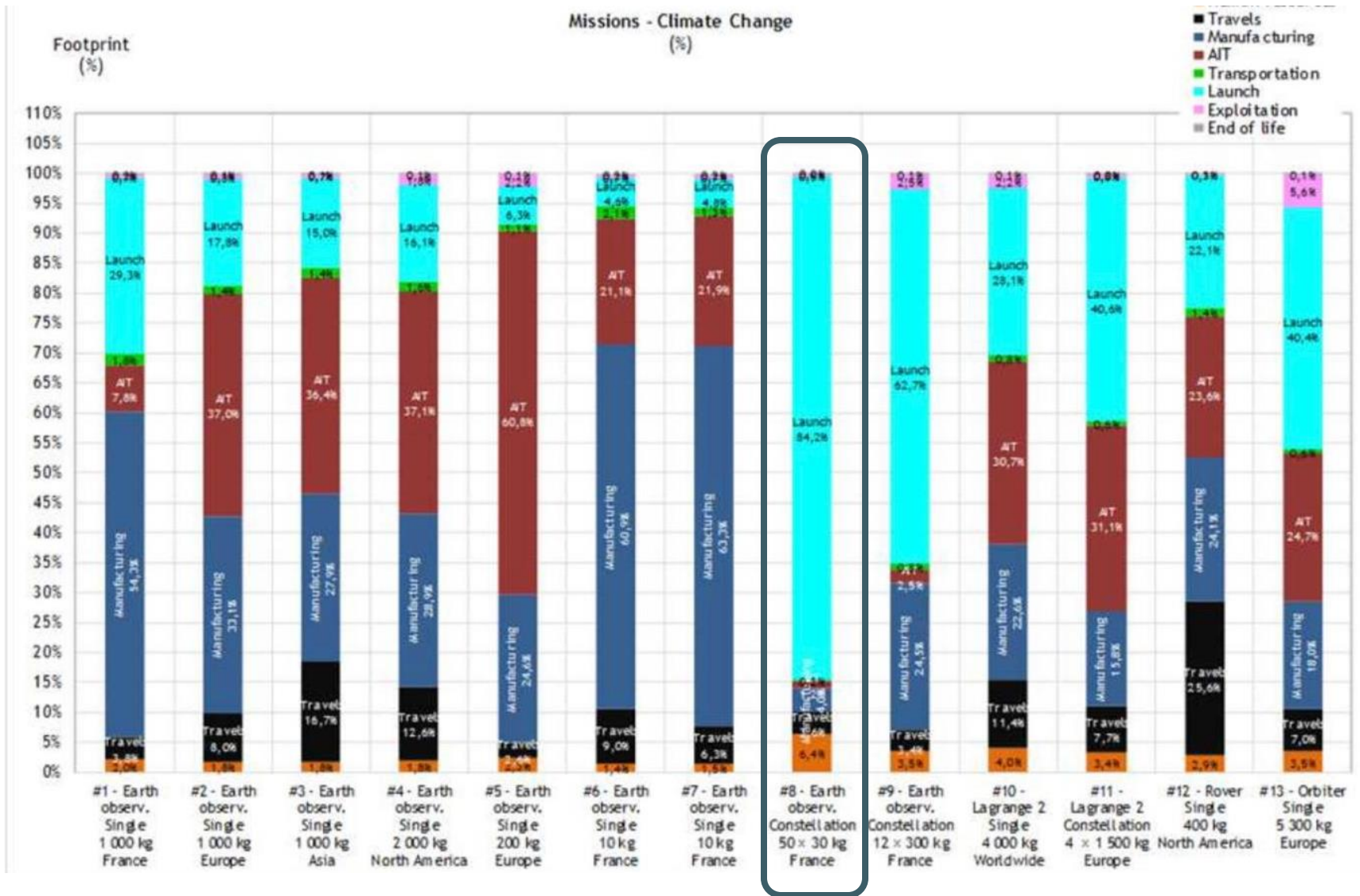
**Maritime  
Surveillance**



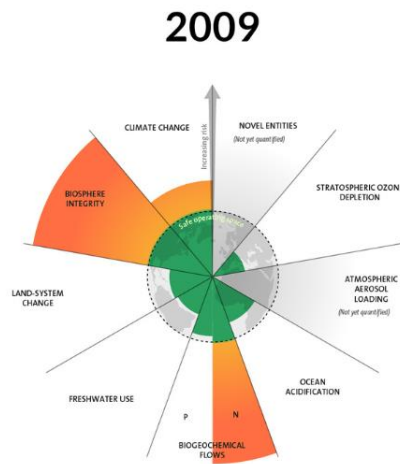
**Border  
control**



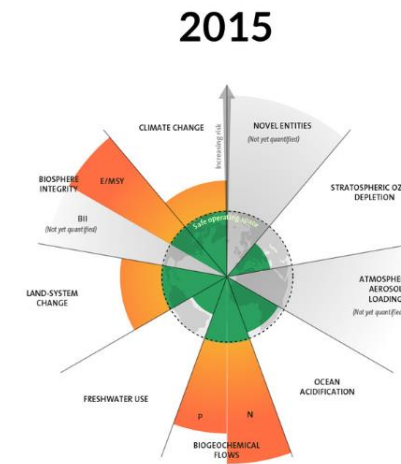
climate  
change  
impact is  
depending  
from the  
space mission



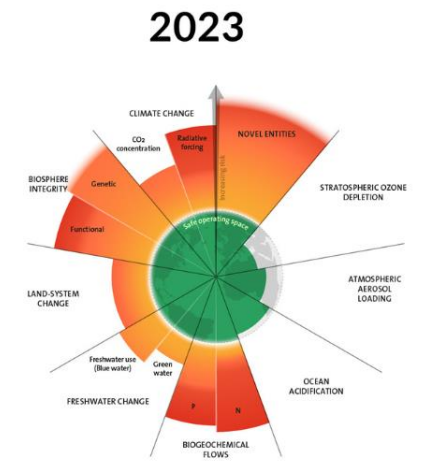
Impact is  
measured  
from 3  
areas



7 boundaries assessed,  
3 crossed



7 boundaries assessed,  
4 crossed



9 boundaries assessed,  
6 crossed

## Planet boundaries



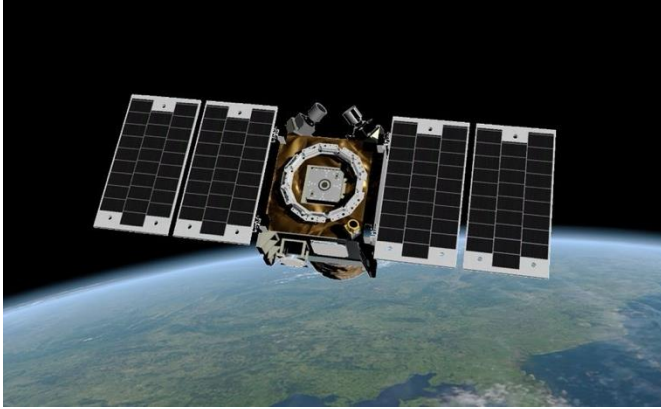
Mineral Resources depletion



Into Orbit

# 6 key aspects have been integrated to design our space mission

**Resource-Efficient  
Manufacturing**



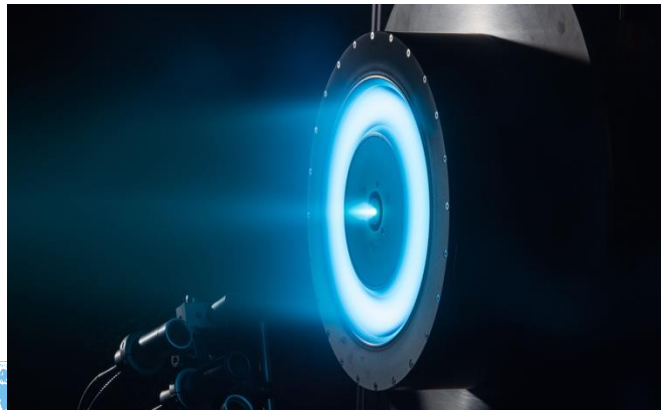
**On Board Processing**



**Rideshare launches**



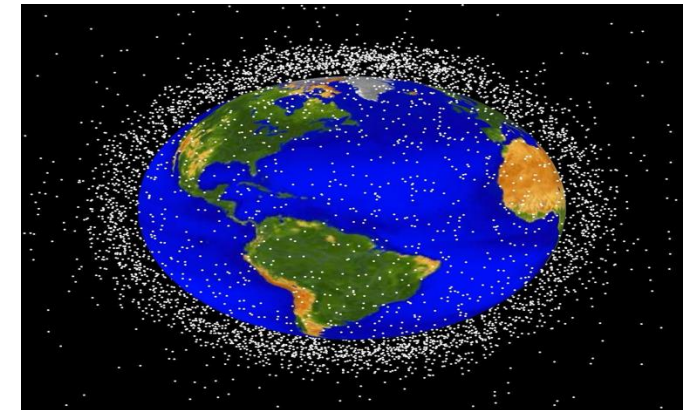
**Electric Propulsion**



**Shared infrastructures**



**End of life management**





Contact :

Giao-Minh NGUYEN

[g.nguyen@promethee.earth](mailto:g.nguyen@promethee.earth)

