

# Leveraging Space Data for Impact Assessments and Policy Making during Emergencies

Space4Health Webinar

Aravind Ravichandran  
Senior Consultant, PwC Space Practice, France  
14 May 2020



Credit: NASA



UNOOSA



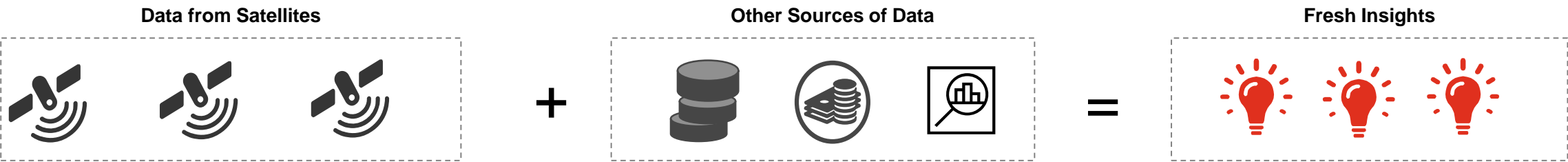
**pwc**

# Agenda & Concept Definition

## Agenda

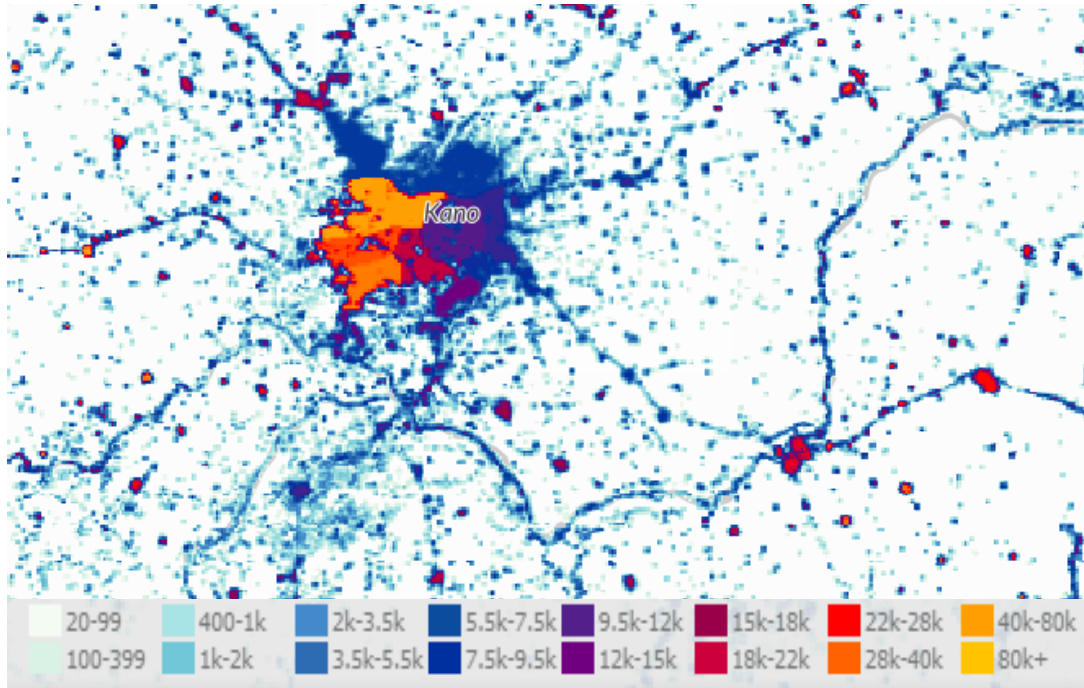
- |    |   |    |
|----|---|----|
| 1. | Space for Crisis Management               | 03 |
| 2. | Space for Economic Impact Assessment      | 04 |
| 3. | Space for Crisis Recovery & Policy Making | 05 |

## Insights from Space: The Concept



# Space for Crisis Management

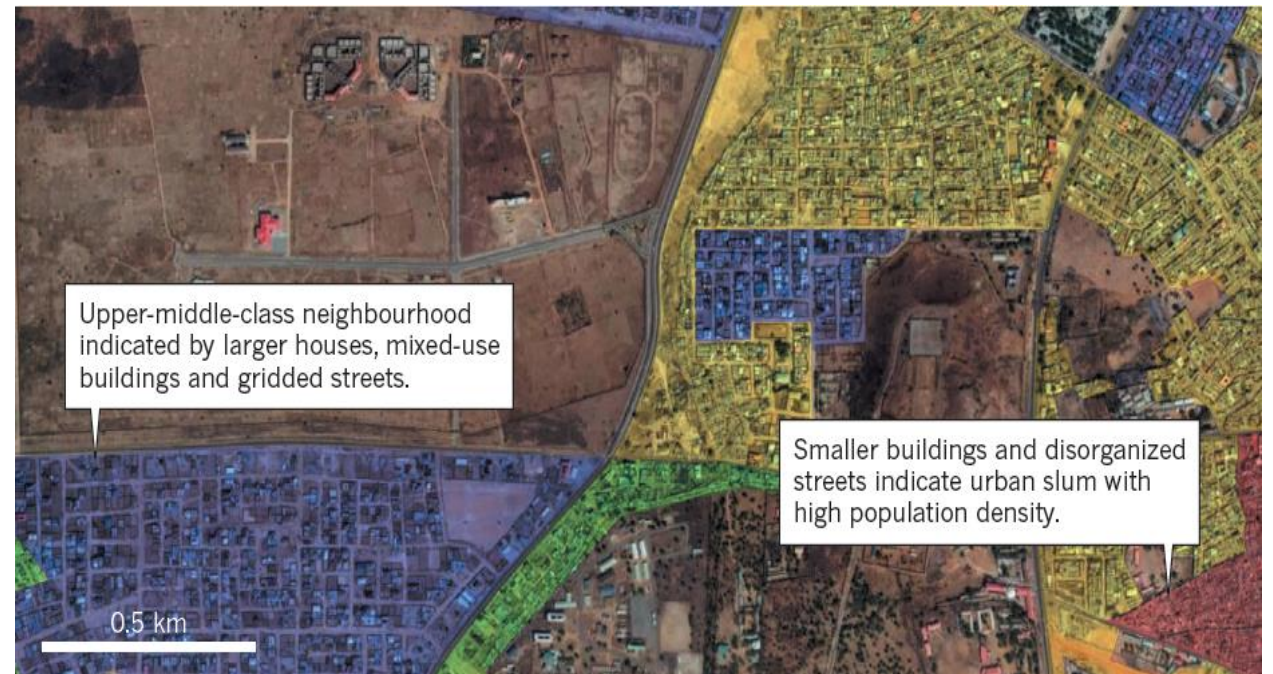
Leveraging on data from satellites combined with other sources of data is particularly relevant for managing the COVID-19 crisis in developing countries



Credit: GHSL

Population Density of Kano, Nigeria based on data from [Global Human Settle Layer](#)

- Data from High Resolution satellites can support in understanding where people live, especially in countries where this information is not documented in detail.
- Population Density plays a key role in the spread of epidemics such as COVID-19



Credit: Jeff Tollefson



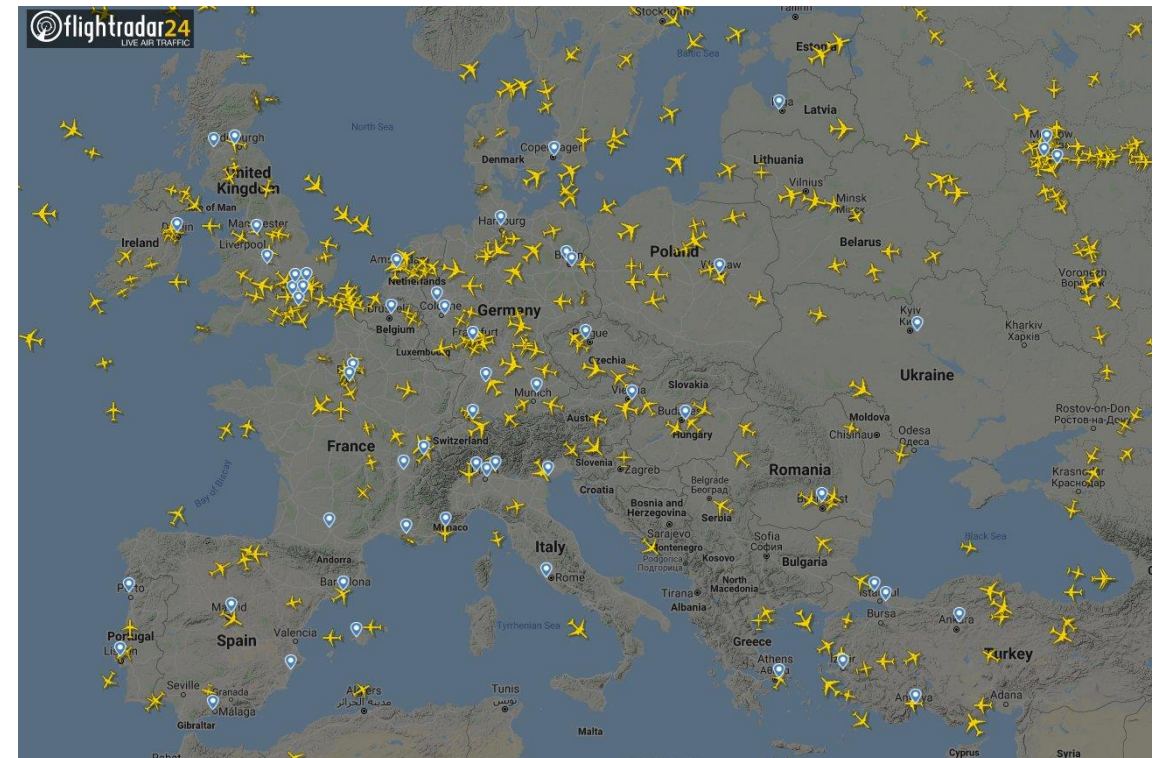
# Space for Economic Impact Assessment

Satellite data is currently playing and is expected to continue to play a key role in understanding and quantifying the economic impacts of the COVID-19 crisis



Change in Flight Movements of Europe between February and March, 2020 based on data from navigation satellites in the form of Automatic Dependent Surveillance-Broadcast (ADS-B) collected by FlightRadar24

Using this data in tandem with the global aviation market data such as pricing trends as well as official data from airports (such as the figure below) can support in identifying the level of impact to the global aviation industry



Credit: FlightRadar24



# Space for Crisis Recovery & Policy Making

Leveraging data from navigation and earth observation satellites, lockdown easing measures can be planned and continuously monitored

## People Mobility Data: Navigation Data

Retail & recreation

**-69%**

compared to baseline

Parks

**-48%**

compared to baseline

Transit stations

**-70%**

compared to baseline



Credit: Google

## Changing Activity Patterns: Earth Observation Data



Credit: Blacksky

# Thank you!

[pwc.com](https://www.pwc.com)

© 2020 PwC France. Tous droits réservés. PwC France est membre de PricewaterhouseCoopers International Ltd, société de droit anglais. PwC désigne la marque sous laquelle les entités membres de PricewaterhouseCoopers International Ltd rendent leurs services professionnels et peut également faire référence à l'une ou plusieurs des entités membres de PricewaterhouseCoopers International Ltd dont chacune est une entité juridique distincte et indépendante.