



OPEN DAY: "Earth observation and integrated applications for disaster risk management and sustainable development"

UN Maps Response to Emergency Relief

Client Solutions Delivery Services – CSDS  
19 - October 2023



DEPARTMENT OF  
**OPERATIONAL  
SUPPORT**

United Nations  
Global  
Service Centre



UNITED NATIONS  
Office for Outer Space Affairs



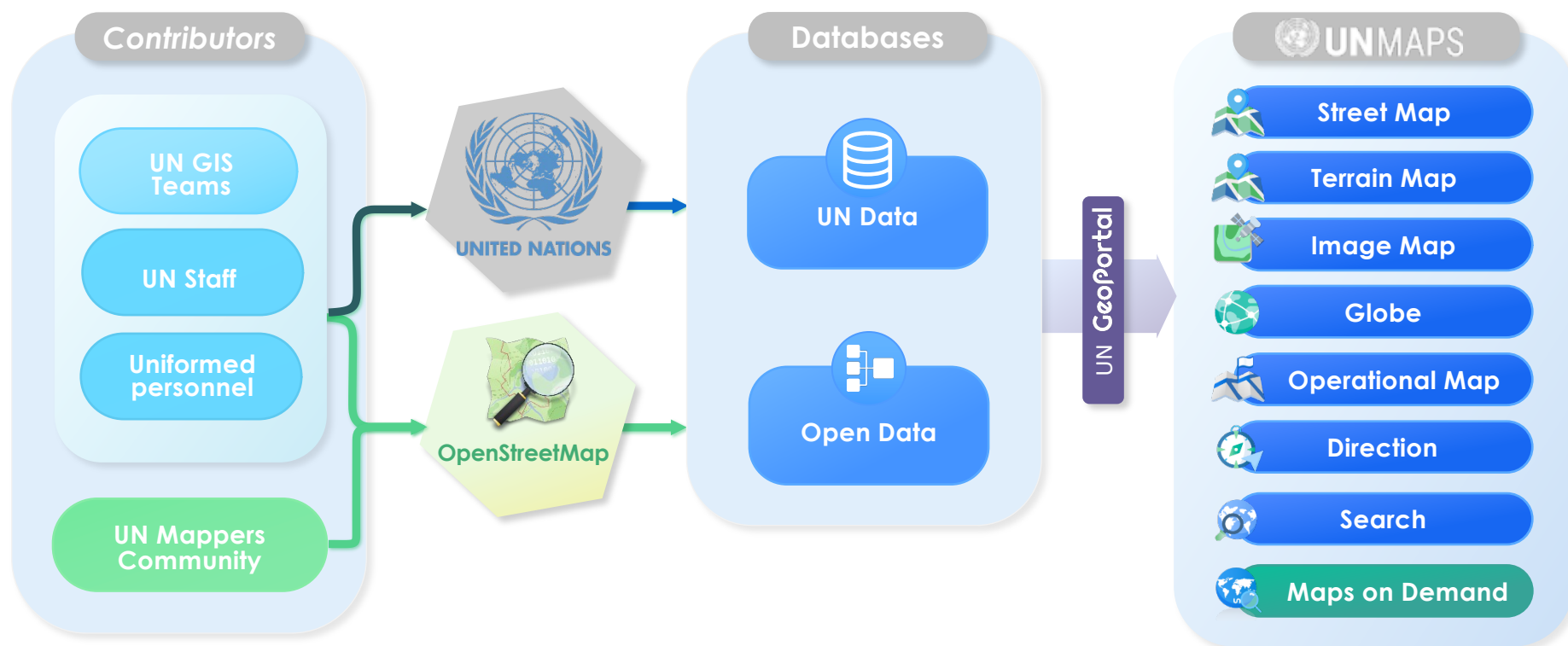
# UNMAPS

MAPPING THE WORLD, SUPPORTING PEACE, SERVING HUMANITY

Geospatial services and maps tailored  
to support United Nations mandate and operations



# Data workflow in UN Maps



## Earthquake in Morocco



- 6.8 magnitude on Richter scale, damaging the area around Marrakech



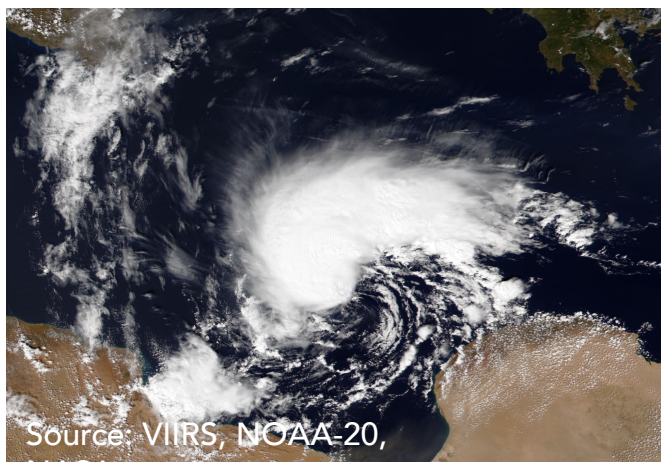
- 2,900 deaths
- ~300,000 displaced people



- 840,000 collapsed buildings



## Floods in Libya



- Caused by Storm Daniel, the biggest storm in North Africa ever recorded



- More than 4000 deaths
- ~10,000 displaced people



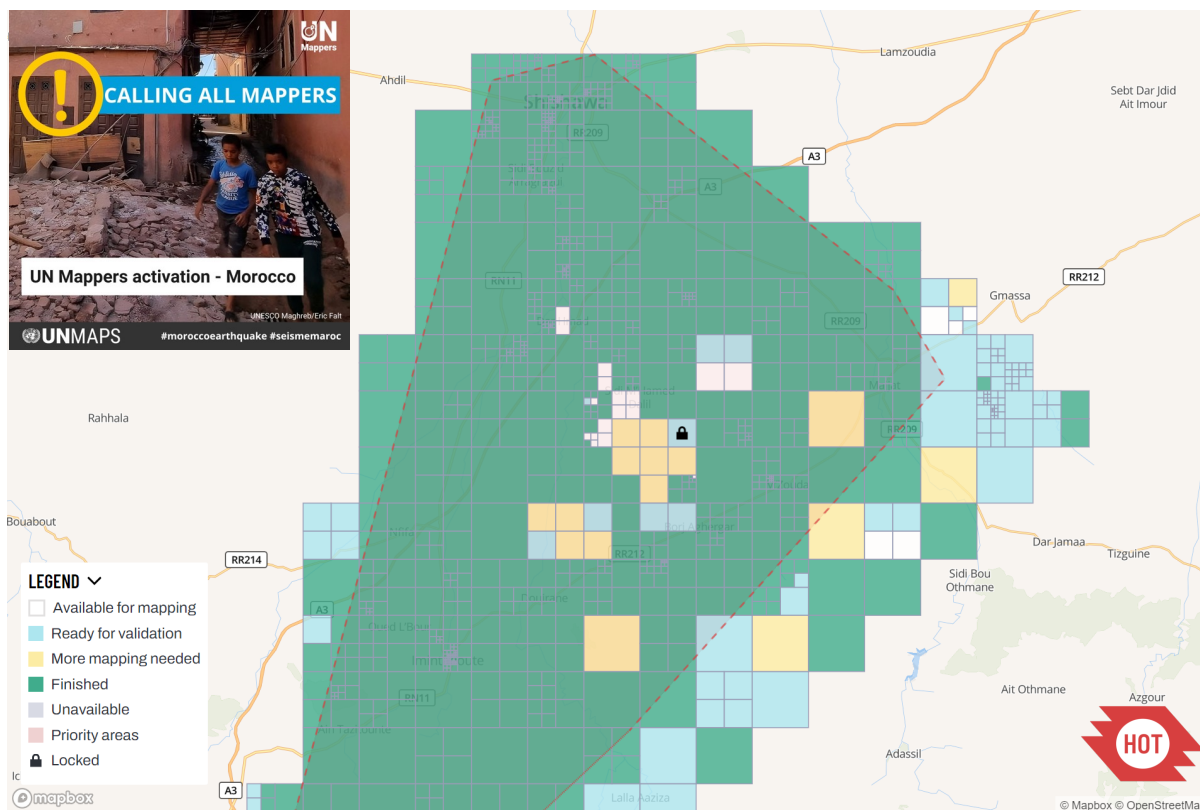
- 2 dams destroyed in the city of Derna, Libya

# Quick data production for disaster response





# Mapping contribution in Morocco



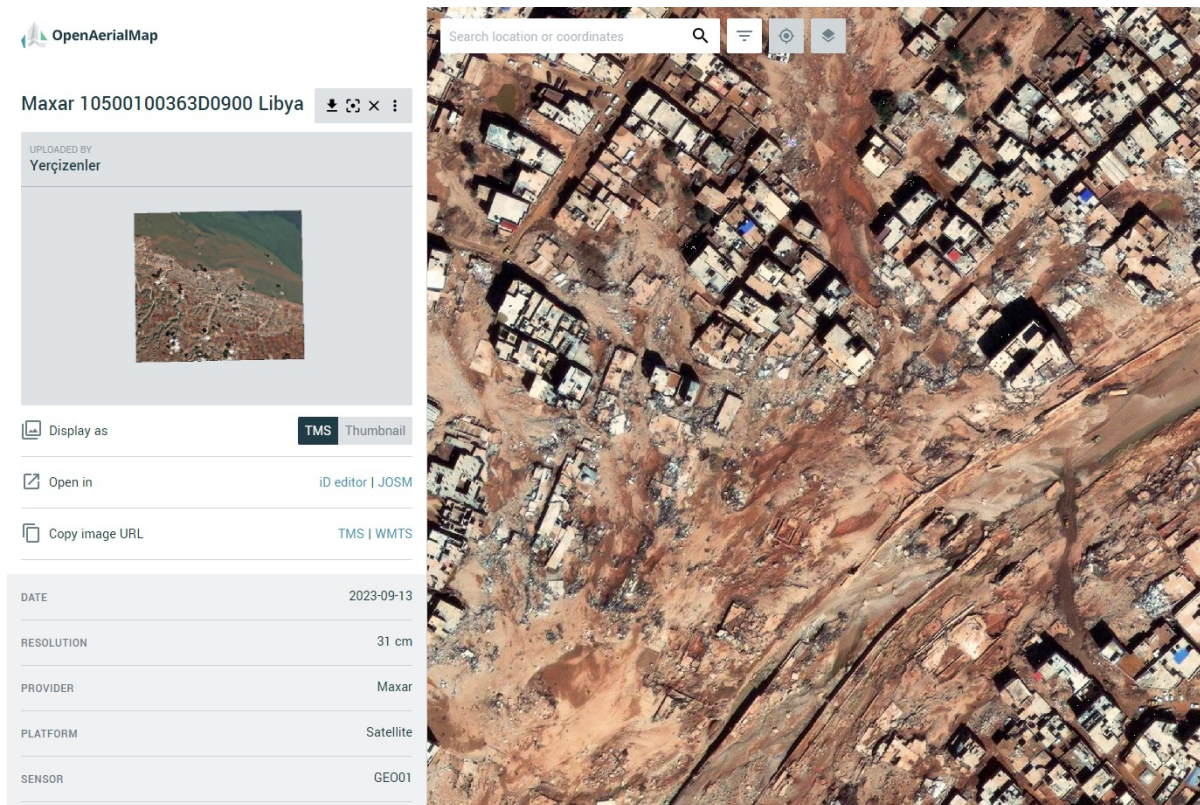
- Volunteers are activated via social media and edit collaboratively on OpenStreetMap (OSM)





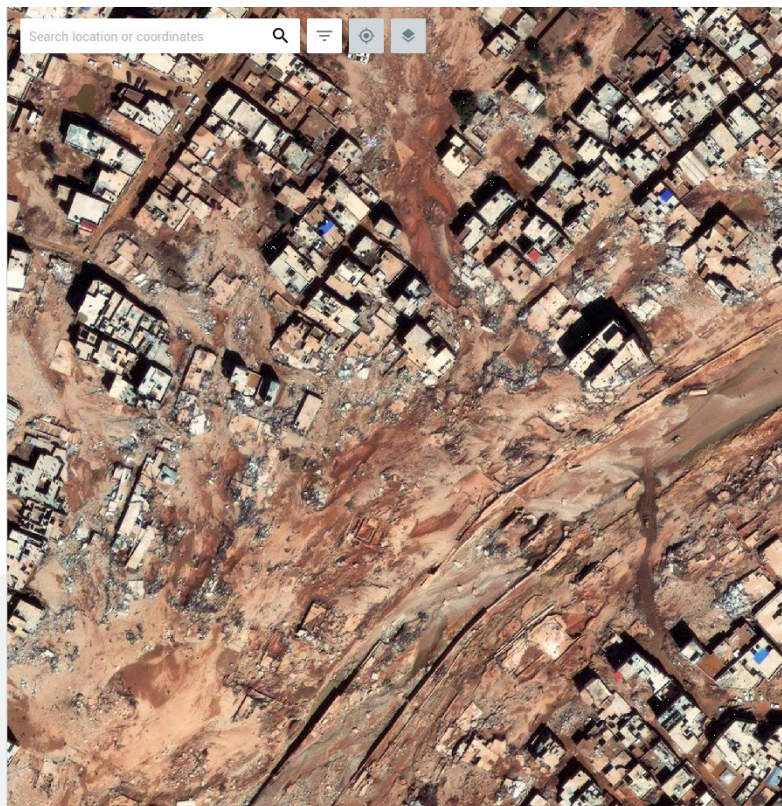


# Mapping contribution in Libya



The screenshot shows the OpenAerialMap interface. At the top, it displays the Maxar logo and the ID 'Maxar 10500100363D0900 Libya'. Below this, it indicates the image was uploaded by 'Yerçizenler'. A small thumbnail of the image is shown. The interface includes options to 'Display as' (Thumbnail), 'Open in' (iD editor | JOSM), and 'Copy image URL' (TMS | WMTS). A metadata table is visible at the bottom left of the interface.

DATE	2023-09-13
RESOLUTION	31 cm
PROVIDER	Maxar
PLATFORM	Satellite
SENSOR	GE001

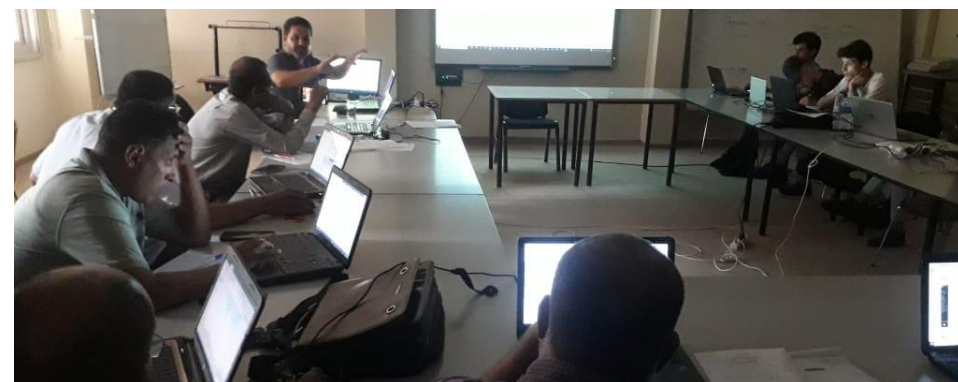
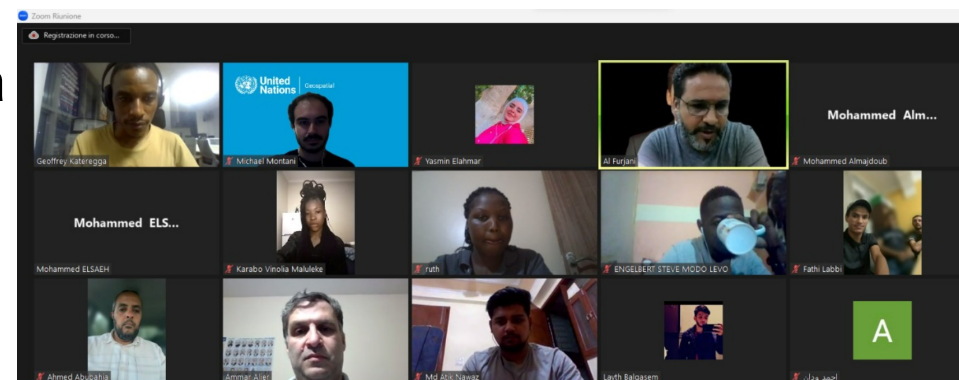


- National OSM community coordinated the response
- Provided support on collaborative mapping projects
- Release of imagery by Maxar Open Data program and upload to OpenAerialMap
- Quick feedback loop with local rescuers to prioritize areas



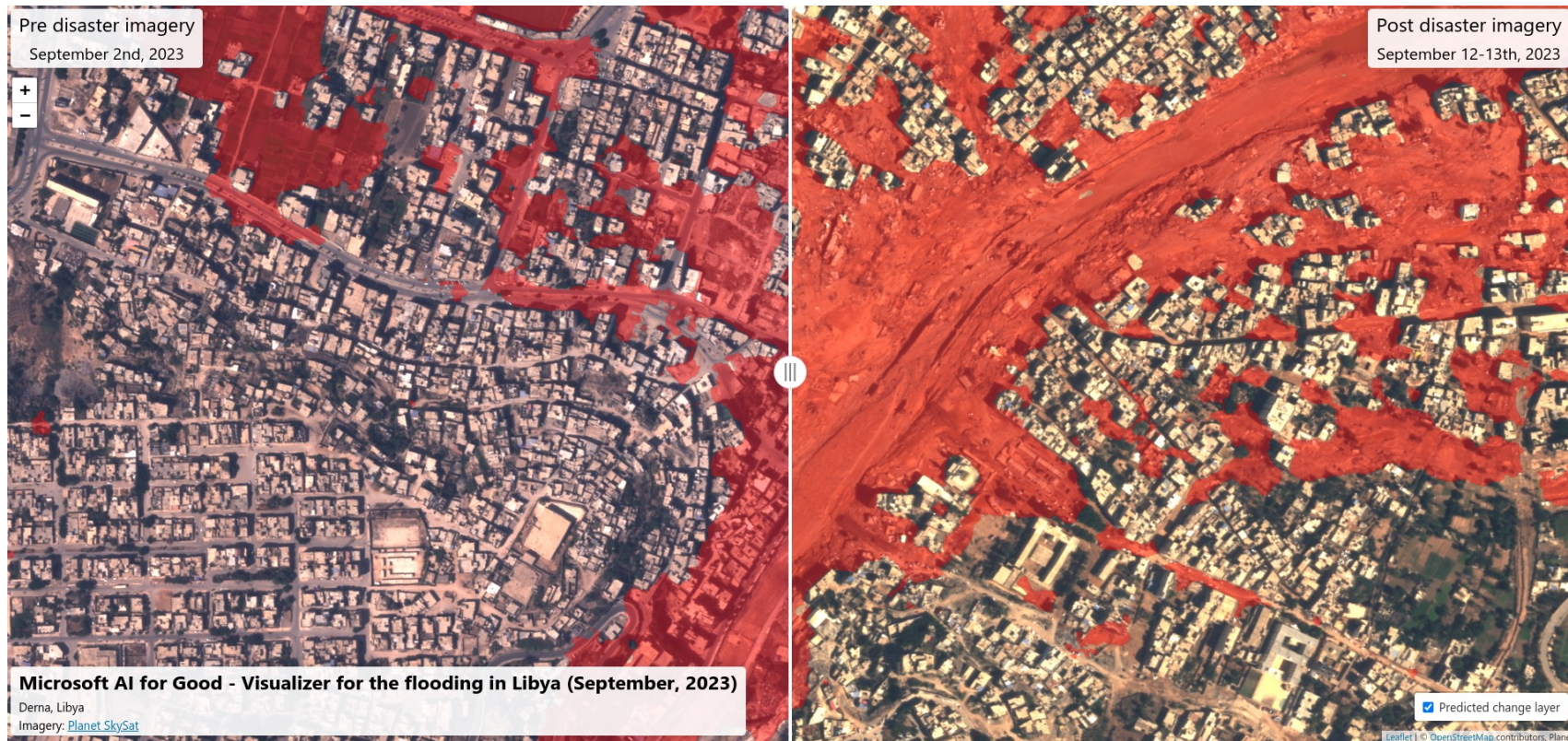
# Mapping contribution in Libya (mapathon)

- 50 people online, 30 in Derna





# Artificial Intelligence to detect flooded area

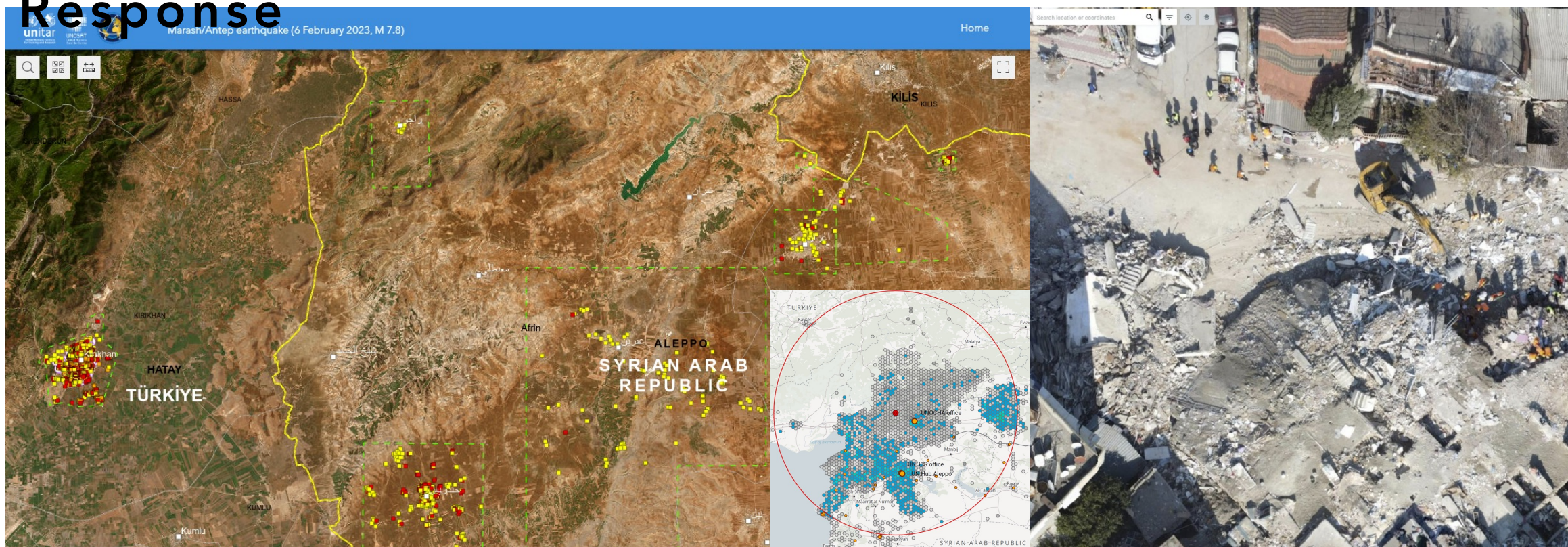


## How UN Maps contributed

- Immediately activated over 2600 volunteers to edit data in the affected areas
- Coordinated response with local mappers
- Built capacities of local rescuers in using open data in emergency
- Mapped, alongside with other organizations:
  - Buildings: 390,000 (Morocco) – 55,000 (Libya)
  - Roads: 8,300 km (Morocco) – 1,550 km (Libya)
  - Waterways: N.A. (Morocco) – 3,800 km (Libya)
- Data available to any humanitarian actor for quick, actionable decisions



# Previous activities: Türkiye-Syria Earthquake Response





---

# THANK YOU



[un.mappers@un.org](mailto:un.mappers@un.org)  
[mappers.un.org](https://mappers.un.org)  
[mappers.un.org/learning](https://mappers.un.org/learning)  
<https://mappers.un.org/news/social-media>

**Michael Montani**  
United Nations Global Service  
Centre  
[michael.montani@un.org](mailto:michael.montani@un.org)



UNITED NATIONS



DEPARTMENT OF  
**OPERATIONAL  
SUPPORT**

United Nations  
Global  
Service Centre



UNITED NATIONS  
Office for Outer Space Affairs